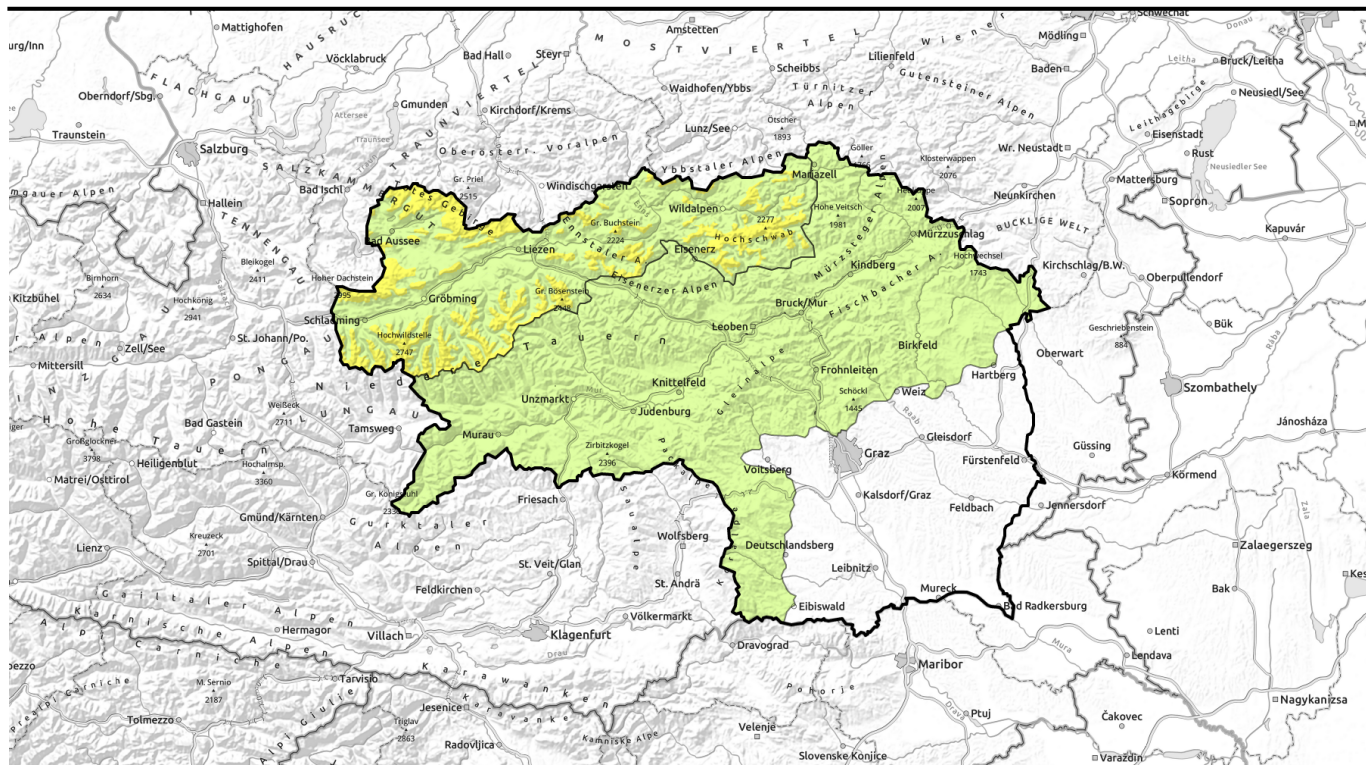


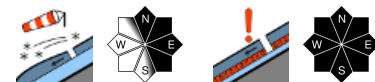
Avalanche report for Friday, 07.04.2023



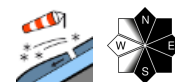
Moderate snowdrift problem / persistent weak layer problem at high altitudes



Totes Gebirge, Dachsteingebiet, Ennstaler Alpen, Rottenmanner Tauern, Nördliche Wölzer Tauern, Schladminger Tauern Nord, Hochschwabgebiet



Östliche Fischbacher Alpen und Wechselgebiet, Stub- und Glinalpe, Koralpe, Mürtzaler Alpen, Westliche Fischbacher Alpen und Grazer Bergland, Seetaler Alpen, Eisenerzer Alpen, Seckauer Tauern, Gurktaler Alpen, Mürtzsteger Alpen, Südliche Wölzer Tauern, Schladminger Tauern Süd



Avalanche problems



Danger ratings

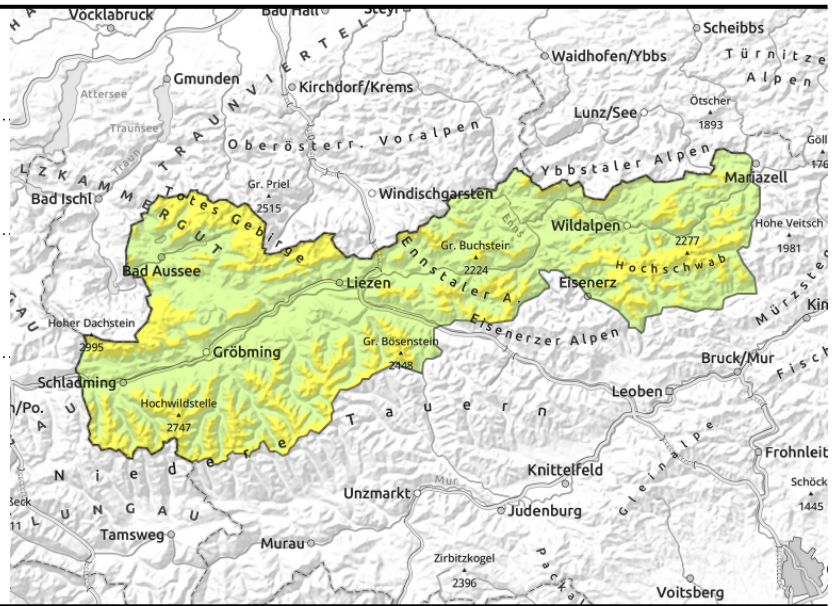
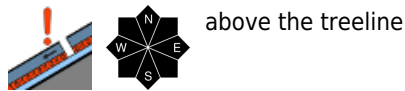
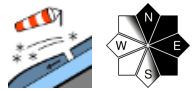


Expositions



Avalanche report for Friday, 07.04.2023

Totes Gebirge, Dachsteingebiet, Ennstaler Alpen, Rottenmanner Tauern, Nördliche Wölzer Tauern, Schladminger Tauern Nord, Hochschwabgebiet



Moderate avalanche danger - circumvent fresh snowdrifts on extremely steep high altitude slopes

Avalanche danger above 2000m is moderate, at lower altitudes danger is low. Main danger stems from older snowdrifts which are insufficiently bonded with the fundamnet and where low additional loading by one sole person can trigger a slab avalanche in steep entry zones into gullies and bowls in all aspects., triggerable mostly by large additional loading, sometimes be minimum loading. Most releases remain small.

Snowpack structure

At high altitudes, depending on aspect and landscape, older snowdrift mases or loose snow atop a melt-freeze encrusted snowpack fundamnet, lie deposited. In between them in many places are weak layers of faceted crystals ("cold on warm"). The snowpack fundamnet has already been fully moistened up to 2200 m, is currently stable. Only at high altitudes on shady slopes are there still more deeply embedded weak layers.

Weather

Good Friday will start with sunshine but clouds will rapidly move in, temperatures rise slightly. At midday at 2000 m: -4 degrees. Winds will be brisk from the northwest. In the evening esp. in N/E regions, light snowfall will set in, snowfall level at 1100m. The southern regions will have better conditions.

On Easter Weekend, a weak cold front will bring lower temperatures and some fresh snow.

Outlook

Avalanche danger will slowly recede.

Avalanche problems



Danger ratings



Expositions



Avalanche report for Friday, 07.04.2023

Östliche Fischbacher Alpen und Wechselgebiet, Stub- und Gleinalpe, Koralpe, Mürztaler Alpen, Westliche Fischbacher Alpen und Grazer Bergland, Seetaler Alpen, Eisenerzer Alpen, Seckauer Tauern, Gurktaler Alpen, Mürzsteiger Alpen, Südliche Wölzer Tauern, Schladminger Tauern Süd



thin, small snowdrift accumulations

Low avalanche danger, but caution urged towards high-altitude snowdrift patches

Avalanche danger is low. Nevertheless isolated danger zones in the form of freshly generated small snowdrift accumulations occur at high altitudes. Particularly on east and south-facing slopes in extremely steep terrain and entry zones, a slab avalanche cannot be ruled out.

Snowpack structure

Strong northerly winds have transported the cold snow, deposit drifts behind abrupt drops in the terrain. Bonding is mostly good, also there are weak layers inside the fresh fallen snow. The fundament is thoroughly wet up to at least 2200m.

Weather

Good Friday will start with sunshine but clouds will rapidly move in, temperatures rise slightly. At midday at 2000 m: -4 degrees. Winds will be brisk from the northwest. In the evening esp. in N/E regions, light snowfall will set in, snowfall level at 1100m. The southern regions will have better conditions.

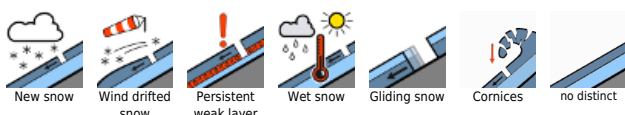
On Easter Weekend, a weak cold front will bring lower temperatures and some fresh snow.

Outlook

No significant change is expected.

Translated by Jeffrey McCabe, www.creativtrans.com

Avalanche problems



Danger ratings



Expositions

