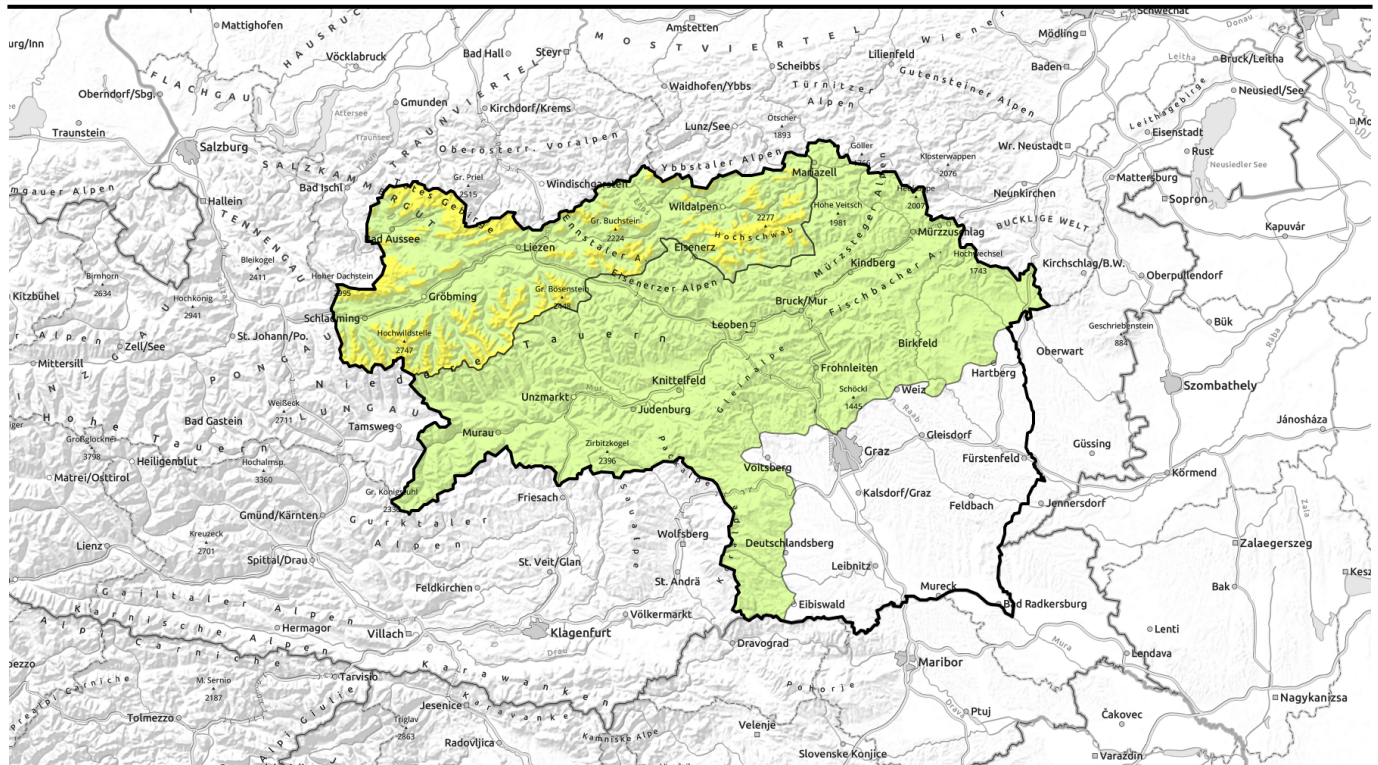


# Avalanche report for Tuesday, 04.04.2023



## Wintery cold. Fresh snowdrifts at high altitudes



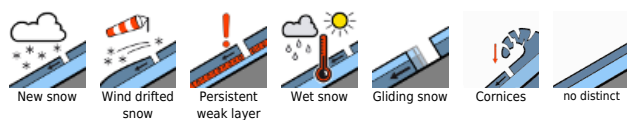
timberline Totes Gebirge, Dachsteingebiet, Ennstaler Alpen, Rottenmanner Tauern, Nördliche Wölzer Tauern, Schladminger Tauern Nord, Hochschwabgebiet



Östliche Fischbacher Alpen und Wechselgebiet, Stub- und Glinalpe, Koralpe, Mürztaler Alpen, Westliche Fischbacher Alpen und Grazer Bergland, Seetaler Alpen, Eisenerzer Alpen, Seckauer Tauern, Gurktaler Alpen, Mürzsteger Alpen, Südliche Wölzer Tauern, Schladminger Tauern Süd



### Avalanche problems



### Danger ratings

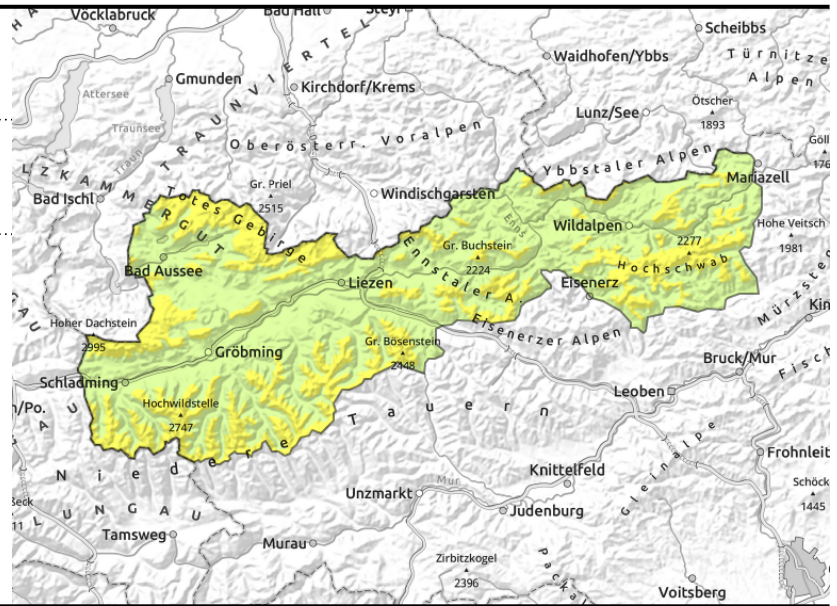
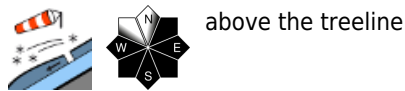


### Expositions



# Avalanche report for Tuesday, 04.04.2023

**Totes Gebirge, Dachsteingebiet, Ennstaler Alpen, Rottenmanner Tauern, Nördliche Wölzer Tauern, Schladminger Tauern Nord, Hochschwabgebiet**



## Moderate avalanche danger - fresh snowdrifts at high altitudes

Avalanche danger above the timberline is moderate, at lower altitudes danger is low. Main danger stems from freshly generated snowdrifts at high altitudes. Particularly in steep east to south-facing entries, one sole person can trigger a slab avalanche. Most releases remain small.

### Snowpack structure

Stormy northerly winds continue to transport the cold snow, deposit drifts behind abrupt drops in the terrain. Bonding is often poor, also there are weak layers inside the fresh fallen snow. The fundament is thoroughly wet up to at least 2000m, the snowpack in all aspected can begin to slide over smooth ground.

### Weather

On Tuesday the peaks along the Northern Alps will be veiled in clouds, visibility is reduced, minor snowfall. Further south it will be largely sunny. Winds will be strong from the north. At 2000 m: -12 degrees.

Wednesday will be heavily overcast but clouds will rapidly disperse and sunshine is expected. The NW winds will slacken off somewhat and temperatures will rise slightly.

### Outlook

Avalanche danger will gradually recede.

#### Avalanche problems



#### Danger ratings



#### Expositions



# Avalanche report for Tuesday, 04.04.2023

Östliche Fischbacher Alpen und Wechselgebiet, Stub- und Gleinalpe, Koralpe, Mürztaler Alpen, Westliche Fischbacher Alpen und Grazer Bergland, Seetaler Alpen, Eisenerzer Alpen, Seckauer Tauern, Gurktaler Alpen, Mürzsteiger Alpen, Südliche Wölzer Tauern, Schladminger Tauern Süd



thin snowdrift patches near ridgelines

## Low avalanche danger - caution: thin snowdrift patches near ridgelines

Avalanche danger is low. Main danger: fresh, small snowdrift accumulations at high altitudes. On extremely steep east-facing entries, one sole skier can trigger a slab avalanche in east-facing and south-facing terrain in particular.

### Snowpack structure

As a result of northerly winds a small amount of fresh snowdrift was deposited behind abrupt drops in the terrain. Bonding to the old snowpack is generally adequate. The fundament is thoroughly wet up to high altitudes, only on shady slopes at high altitudes is the snowpack still weak.

### Weather

On Tuesday the peaks along the Northern Alps will be veiled in clouds, visibility is reduced, minor snowfall. Further south it will be largely sunny. Winds will be strong from the north. At 2000 m: -12 degrees.

Wednesday will be heavily overcast but clouds will rapidly disperse and sunshine is expected. The NW winds will slacken off somewhat and temperatures will rise slightly.

### Outlook

Avalanche danger levels are not expected to change

Translated by Jeffrey McCabe, [www.creativtrans.com](http://www.creativtrans.com)

#### Avalanche problems



#### Danger ratings



#### Expositions

