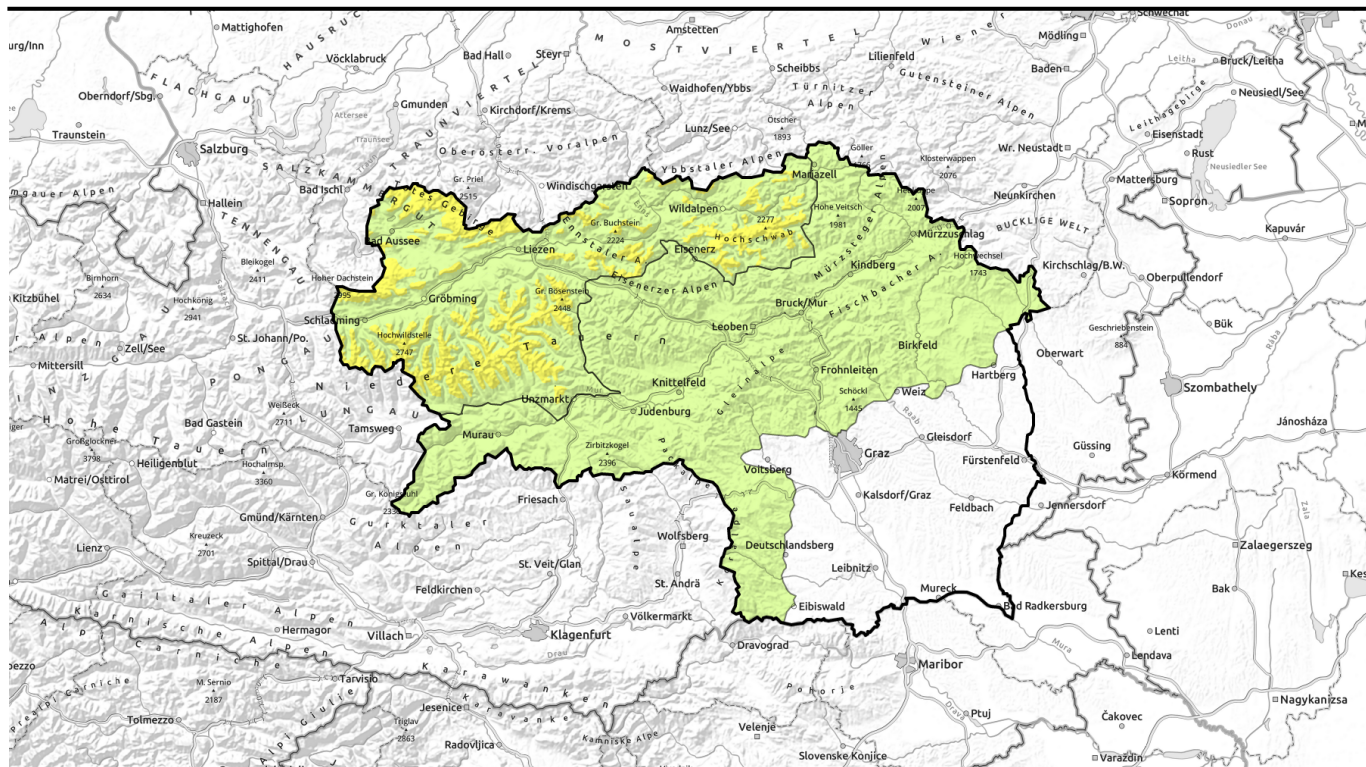


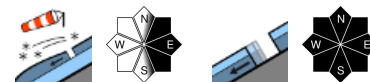
Avalanche report for Saturday, 01.04.2023



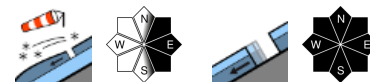
Snow showers and clouds on the weekend - Fresh snowdrift accumulations



1600 m
Totes Gebirge, Dachsteingebiet, Ennstaler Alpen, Rottenmanner Tauern, Nördliche Wölzer Tauern, Schladminger Tauern Nord, Schladminger Tauern Süd, Südliche Wölzer Tauern, Hochschwabgebiet



Östliche Fischbacher Alpen und Wechselgebiet, Stub- und Glinalpe, Koralpe, Mürtzaler Alpen, Westliche Fischbacher Alpen und Grazer Bergland, Mürtzsteiger Alpen, Seetaler Alpen, Gurktaler Alpen, Eisenerzer Alpen, Seckauer Tauern



Avalanche problems



Danger ratings

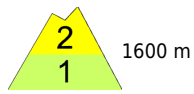


Expositions



Avalanche report for **Saturday, 01.04.2023**

Totes Gebirge, Dachsteingebiet, Ennstaler Alpen, Rottenmanner Tauern, Nördliche Wölzer Tauern, Schladminger Tauern Nord, Schladminger Tauern Süd, Südliche Wölzer Tauern, Hochschwabgebiet



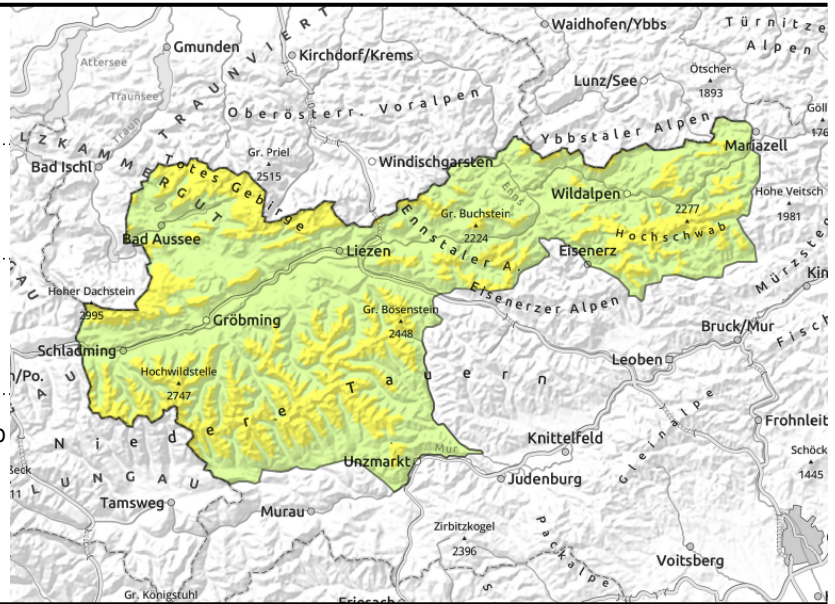
1600 m



near ridgelines, behind abrupt drops in the terrain, in gullies, bowls



seldom, and in extremely steep terrain



Moderate avalanche danger - fresh snowdrift accumulations at high altitudes

Avalanche danger above 1600m is considerable below that altitude there is little snow on the ground. Main danger: freshly generated snowdrift accumulations at high altitudes. Particularly on steep east-facing entries, one sole skier can trigger a slab avalanche. The snowpack is much moistened up to high altitudes, naturally triggered glide-snow avalanches are possible at any time of day or night.

Snowpack structure

The fresh snow from the beginning of the week has settled well at all altitudes. The snowpack is moist-to-wet, bonding to the ground can be lost in all aspects at any time. Fresh snow and NW winds have transported the snow to behind abrupt drops in the terrain where it is bonding well with the old snow. But inside the drifts themselves are layers of graupel or soft layers which are weak.

Weather

Starting on Friday afternoon, precipitation from the northwest will move south over the mountains of Styria, the snowfall level will lie at 1600m.

Saturday will be cool and instable. Cloud cover will be dense in the morning, snow showers are expected in the northern regions, the snowfall level will lie at 1500m. In the afternoon, variably cloudy, snow showers possible everywhere, but frequent sunshine, too. Winds will be brisk to strong from northwest. At 2000 m: 0 degrees at midday.

On Sunday, further snowfall. Temperatures will descend a notch further.

Outlook

The snowdrift problem will become more pronounced

Avalanche problems



Danger ratings



Expositions



Avalanche report for Saturday, 01.04.2023

Östliche Fischbacher Alpen und Wechselgebiet, Stub- und Gleinalpe, Korralpe, Mürztaler Alpen, Westliche Fischbacher Alpen und Grazer Bergland, Mürzsteiger Alpen, Seetaler Alpen, Gurktaler Alpen, Eisenerzer Alpen, Seckauer Tauern



thin snowdrift patches near ridgelines



seldom, and in extremely steep terrain

Low avalanche danger - Thin snowdrift patches near ridgelines

Avalanche danger is low. Main danger: fresh, small snowdrift accumulations at high altitudes. On extremely steep east-facing entries, one sole skier can trigger a slab avalanche. The snowpack is much moistened up to high altitudes, naturally triggered glide-snow avalanches are possible at any time of day or night.

Snowpack structure

The snowpack is moist-to-wet, bonding to the ground can be lost in all aspects at any time. Fresh snow and NW winds have transported the snow to behind abrupt drops in the terrain where it is bonding well with the old snow. But inside the drifts themselves are layers of graupel or soft layers which are weak.

Weather

Starting on Friday afternoon, precipitation from the northwest will move south over the mountains of Styria, the snowfall level will lie at 1600m.

Saturday will be cool and instable. Cloud cover will be dense in the morning, snow showers are expected in the northern regions, the snowfall level will lie at 1500m. In the afternoon, variably cloudy, snow showers possible everywhere, but frequent sunshine, too. Winds will be brisk to strong from northwest. At 2000 m: 0 degrees at midday.

On Sunday, further snowfall. Temperatures will descend a notch further.

Outlook

No significant change in avalanche danger levels is expected

Translated by Jeffrey McCabe, www.creativtrans.com

Avalanche problems



New snow



Wind drifted snow



Persistent weak layer



Wet snow



Gliding snow



Cornices



no distinct

Danger ratings



1

low



2

moderate



3

considerable



4

high



5

very high

Expositions

