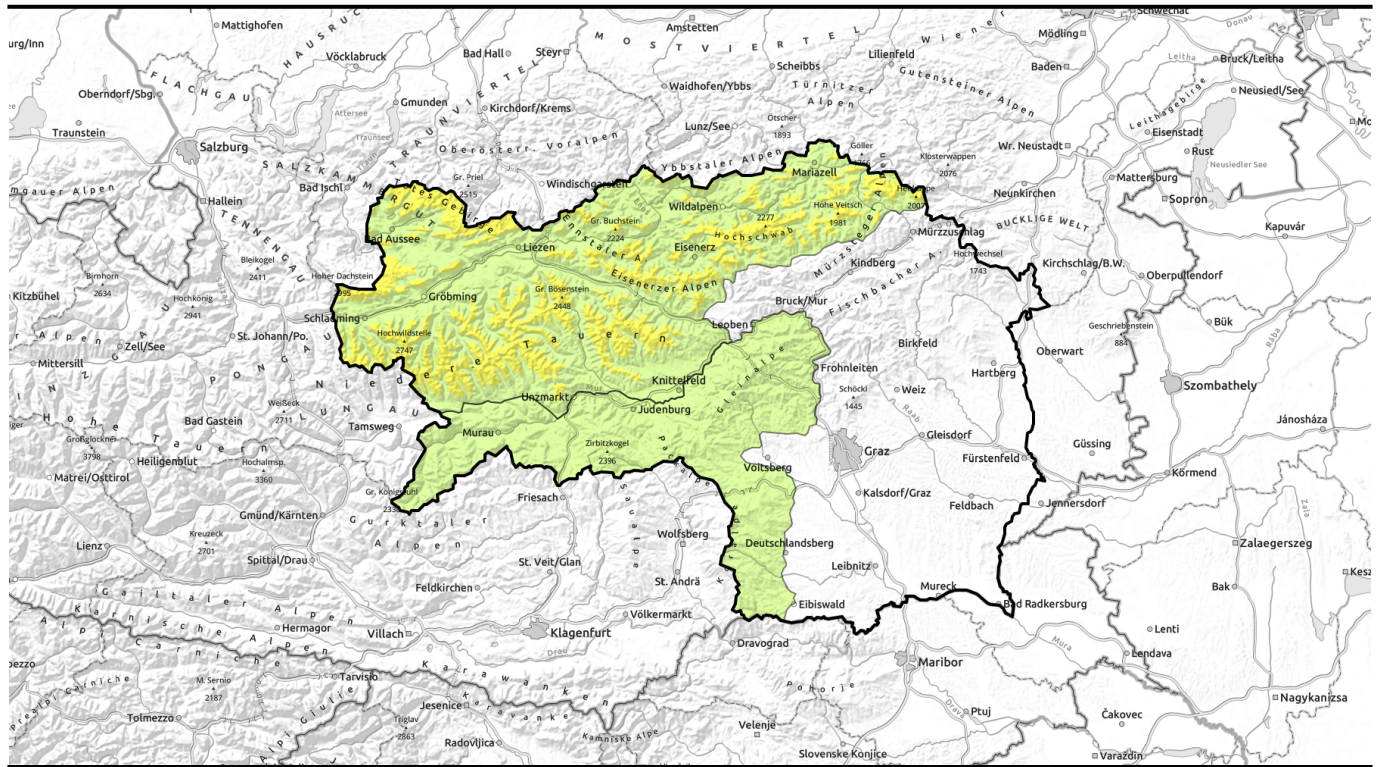



# Avalanche report for Monday, 27.03.2023

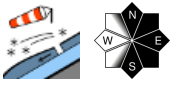



## Trigger-sensitive snowdrift accumulations - Snow showers and icy temperatures down to the valleys

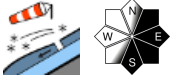
- 

forestline


Totes Gebirge, Dachsteingebiet, Nördliche Wölzer Tauern, Schladminger Tauern Nord, Schladminger Tauern Süd, Südliche Wölzer Tauern, Seckauer Tauern, Eisenerzer Alpen, Hochschwabgebiet, Ennstaler Alpen, Rottenmanner Tauern, Mürzsteger Alpen


- 


Stub- und Gleinalpe, Korralpe, Seetaler Alpen, Gurktaler Alpen




**Avalanche problems**



**Danger ratings**

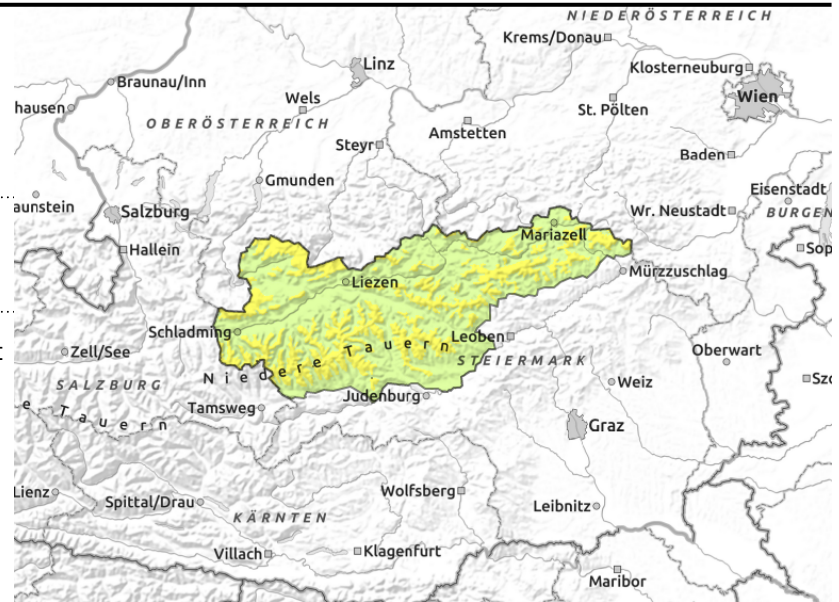


**Expositions**



# Avalanche report for Monday, 27.03.2023

Totes Gebirge, Dachsteingebiet, Nördliche Wölzer Tauern, Schladminger Tauern Nord, Schladminger Tauern Süd, Südliche Wölzer Tauern, Seckauer Tauern, Eisenerzer Alpen, Hochschwabgebiet, Ennstaler Alpen, Rottenmanner Tauern, Mürzsteiger Alpen



easily triggered, behind abrupt drops in the terrain, exposed terrain is windblown

## Moderate avalanche danger above treeline - Easily triggered snowdrift patches

Avalanche danger above the treeline is moderate, below that altitude danger is low. Danger zones of freshly generated brittle snowdrift accumulations can be triggered even by minimum additional loading. They occur mostly in gullies and bowls, also behind abrupt drops in the terrain in extended easterly aspects. The risks of falling on hardened icy ridgeline surfaces require attentiveness.

### Snowpack structure

Fresh snow is being transported by stormy NW winds distant from ridgelines and deposited in gullies and bowls in extended eastern aspects where they lie atop melt-freeze crusts or an icy old snowpack surface or snowdrifts from previous days - bonding is poor. Elsewhere the snowpack surface is encrusted, particularly in exposed zones it is hard and icy. Where there was no snow prior to the precipitation, the fresh fallen snow is insufficient for backcountry tours.

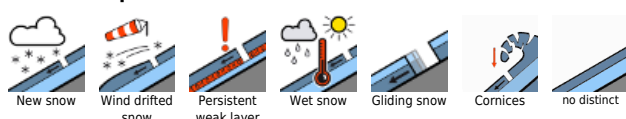
### Weather

On Monday it will be icy cold, very stormy in the mountains of Styria. At 2000 m: -10 degrees; at 1500 m: -6 degrees, in the south only slightly warmer. Winds will be storm-strength to gale-strength from the northwest. On the northern flank of the Alps, cloudy skies all day long, with often intensive snow showers. On the southern flank of the Alps, pleasant conditions with occasional snow showers. On Tuesday, still stormy, icy cold with frequent snow showers in the northern regions, only isolated minor showers in the southern regions. In the afternoon, weather improvement in all regions, precipitation will terminate, sunshine is expected on the southern flank of the Alps.

### Outlook

The snowdrift problem will persist, avalanche danger levels are not expected to change.

#### Avalanche problems



#### Danger ratings



#### Expositions

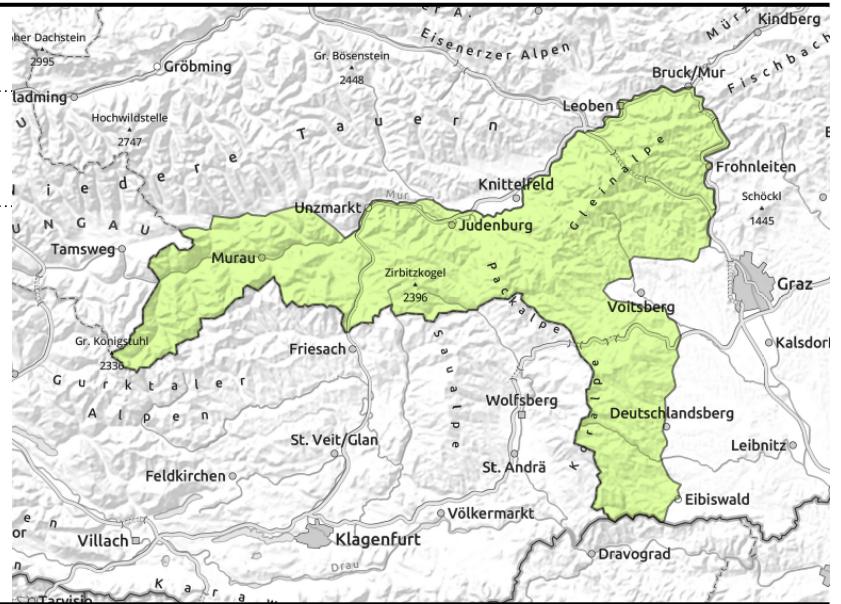


# Avalanche report for Monday, 27.03.2023

Stub- und Gleinalpe, Koralpe, Seetaler Alpen, Gurktaler Alpen



thin ridgeline snowdrift patches, exposed terrain is windblown



## Icy conditions. Snowdrift patches at high altitudes.

Avalanche danger is low, but freshly generated snowdrift patches require attentiveness. Danger zones occur mostly in gullies and bowls, also behind abrupt drops in the terrain in extended easterly aspects. The risks of falling on hardened icy ridgeline surfaces require attentiveness.

### Snowpack structure

Fresh snow is being transported by stormy NW winds distant from ridgelines and deposited in gullies and bowls in extended eastern aspects where they lie atop melt-freeze crusts or an icy old snowpack surface or snowdrifts from previous days - bonding is poor. Elsewhere the snowpack surface is encrusted, particularly in exposed zones it is hard and icy. Where there was no snow prior to the precipitation, the fresh fallen snow is insufficient for backcountry tours.

### Weather

On Monday it will be icy cold, very stormy in the mountains of Styria. At 2000 m: -10 degrees; at 1500 m: -6 degrees, in the south only slightly warmer. Winds will be storm-strength to gale-strength from the northwest. On the northern flank of the Alps, cloudy skies all day long, with often intensive snow showers. On the southern flank of the Alps, pleasant conditions with occasional snow showers. On Tuesday, still stormy, icy cold with frequent snow showers in the northern regions, only isolated minor showers in the southern regions. In the afternoon, weather improvement in all regions, precipitation will terminate, sunshine is expected on the southern flank of the Alps.

### Outlook

The avalanche danger levels are not expected to change significantly.

Translated by Jeffrey McCabe, [www.creativtrans.com](http://www.creativtrans.com)

#### Avalanche problems



#### Danger ratings



#### Expositions

