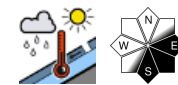


Daytime danger cycle - Increasing wet-snow problem



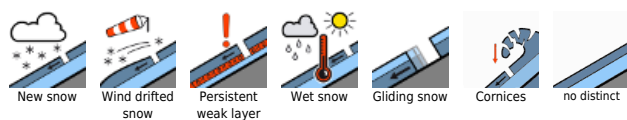
Totes Gebirge, Dachsteingebiet, Schladminger Tauern Nord, Nördliche Wölzer Tauern, Rottenmanner Tauern, Ennstaler Alpen, Hochschwabgebiet



Mürzsteiger Alpen, Stub- und Gleinalpe, Koralpe, Seetaler Alpen, Eisenerzer Alpen, Seckauer Tauern, Südliche Wölzer Tauern, Schladminger Tauern Süd, Gurktaler Alpen



Avalanche problems

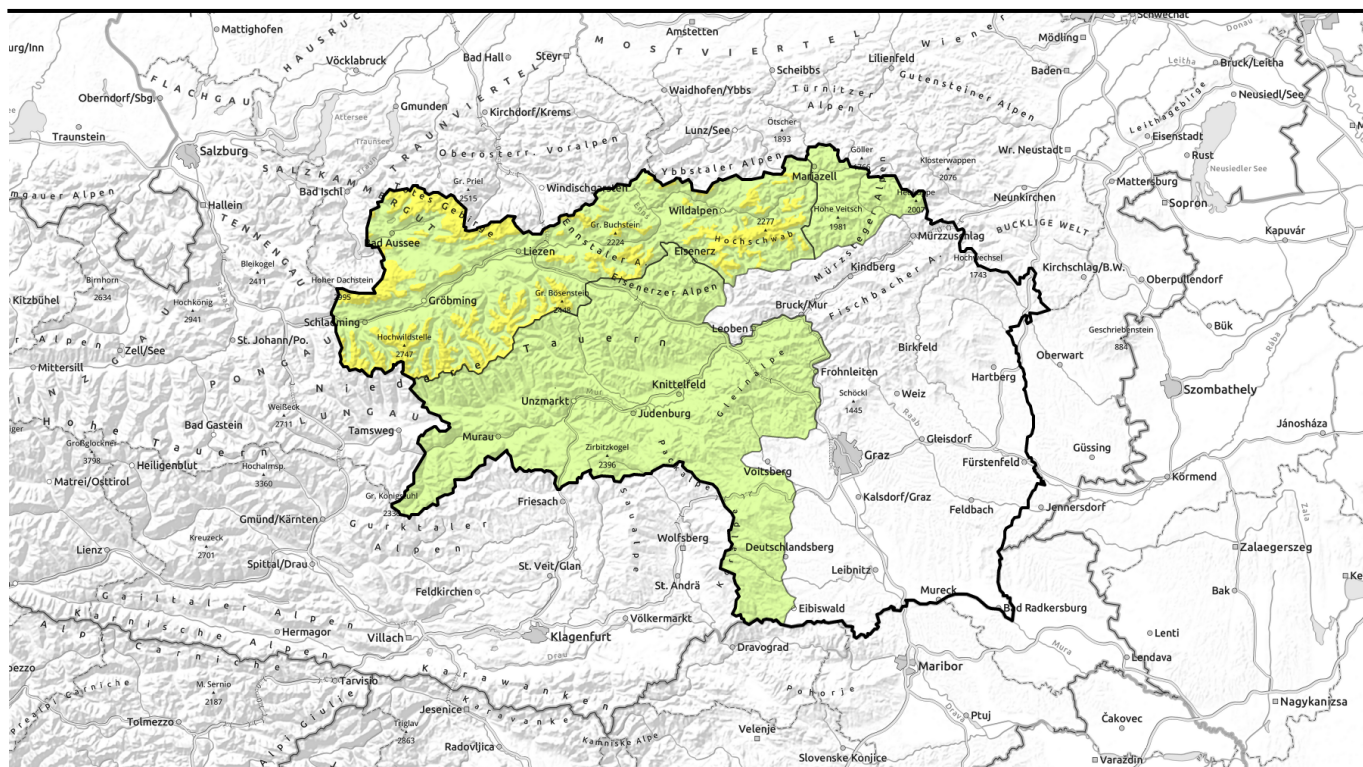


Danger ratings



Expositions

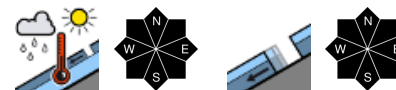




Tagesgang - Ansteigendes Nassschneeproblem.



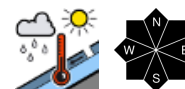
Totes Gebirge, Dachsteingebiet, Schladminger Tauern Nord, Nördliche Wölzer Tauern, Rottenmanner Tauern, Ennstaler Alpen, Hochschwabgebiet



1500 m



Mürzsteiger Alpen, Stub- und Gleinalpe, Koralpe, Seetaler Alpen, Eisenerzer Alpen, Seckauer Tauern, Südliche Wölzer Tauern, Schladminger Tauern Süd, Gurktaler Alpen



Avalanche problems



Danger ratings



Expositions

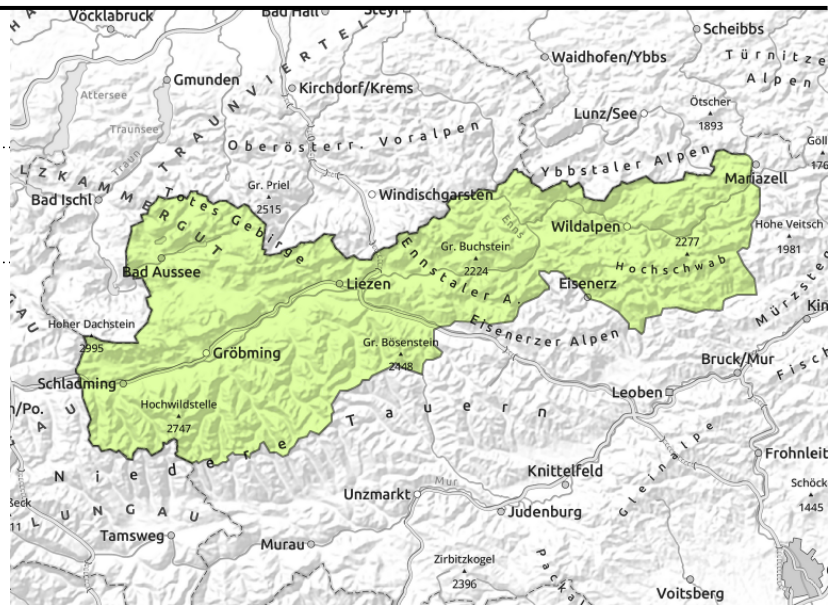


Avalanche report for Thursday, 23.03.2023, morning

Totes Gebirge, Dachsteingebiet, Schladminger Tauern Nord, Nördliche Wölzer Tauern, Rottenmanner Tauern, Ennstaler Alpen, Hochschwabgebiet



daytime danger cycle of naturally triggered avalanche activity



Increasing avalanche danger during course of the day

Avalanche danger increases during the course of the day above 1500m from low to moderate. On steep rocky slopes, particularly in sunny aspects, small-to-medium naturally triggered wet-snow avalanches can be expected. Where the snowpack is thoroughly wet, also wet slab avalanches and glide-snow avalanches cannot be ruled out. Open glide-cracks are indicators of imminent danger, should be circumvented. Backcountry tours should be terminated early in the day.

Snowpack structure

Persistent warmth over the last few days has moistened the snowpack on sunny slopes up to high altitudes, intermediate-altitude slopes are becoming bare of snow. On shady slopes where there are more reserves of cold there are still layers of faceted crystals inside the snowpack which will be activated as weak layers when the snowpack soon becomes moist and destabilized thereby. On smooth slopes gliding activity has increased.

Weather

On Thursday morning it will be sunny in the Styrian mountains, but clouds will move in during the course of the day from the northwest. Precipitation is not anticipated. Winds will be moderate to brisk on the summits from westerly directions. At 2000 m: +5 degrees; at 1500 m: +10 degrees.

On Friday, dense cloud cover will move in, though brisk SW winds will disperse it somewhat. During the afternoon a cold front will arrive from the northwest, bringing lower temperatures and precipitation widespread on Friday night and during the daytime on Saturday.

Outlook

On Friday, wet snow will be the major problem

Avalanche problems



Danger ratings



Expositions



Avalanche report for Thursday, 23.03.2023, afternoon

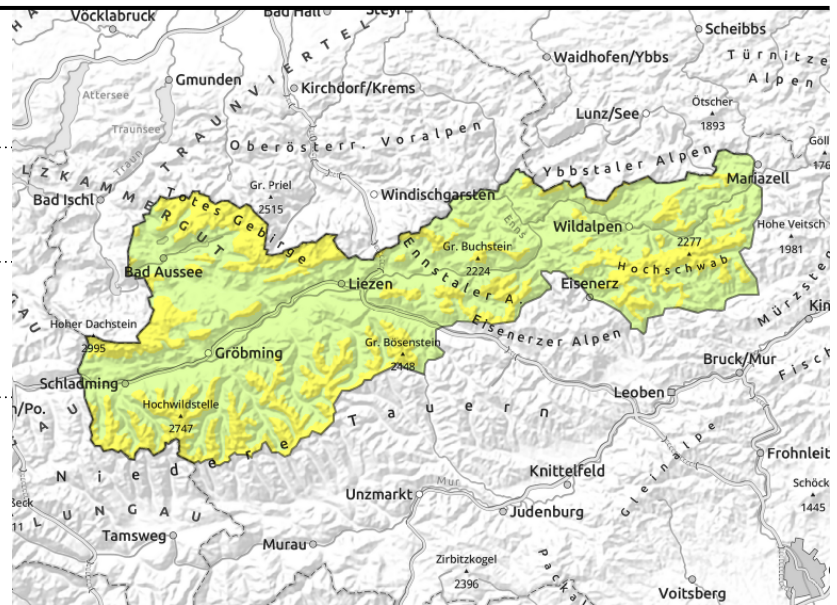
Totes Gebirge, Dachsteingebiet, Schladminger Tauern Nord, Nördliche Wölzer Tauern, Rottenmanner Tauern, Ennstaler Alpen, Hochschwabgebiet



daytime danger cycle of naturally triggered avalanche activity



in extremely steep grass-covered terrain



Increasing avalanche danger during course of the day

Avalanche danger increases during the course of the day above 1500m from low to moderate. On steep rocky slopes, particularly in sunny aspects, small-to-medium naturally triggered wet-snow avalanches can be expected. Where the snowpack is thoroughly wet, also wet slab avalanches and glide-snow avalanches cannot be ruled out. Open glide-cracks are indicators of imminent danger, should be circumvented. Backcountry tours should be terminated early in the day.

Snowpack structure

Persistent warmth over the last few days has moistened the snowpack on sunny slopes up to high altitudes, intermediate-altitude slopes are becoming bare of snow. On shady slopes where there are more reserves of cold there are still layers of faceted crystals inside the snowpack which will be activated as weak layers when the snowpack soon becomes moist and destabilized thereby. On smooth slopes gliding activity has increased.

Weather

On Thursday morning it will be sunny in the Styrian mountains, but clouds will move in during the course of the day from the northwest. Precipitation is not anticipated. Winds will be moderate to brisk on the summits from westerly directions. At 2000 m: +5 degrees; at 1500 m: +10 degrees.

On Friday, dense cloud cover will move in, though brisk SW winds will disperse it somewhat. During the afternoon a cold front will arrive from the northwest, bringing lower temperatures and precipitation widespread on Friday night and during the daytime on Saturday.

Outlook

On Friday, wet snow will be the major problem

Avalanche problems



Danger ratings



Expositions



Avalanche report for Thursday, 23.03.2023

Mürzsteiger Alpen, Stub- und Gleinalpe, Koralpe, Seetaler Alpen, Eisenerzer Alpen, Seckauer Tauern, Südliche Wölzer Tauern, Schladminger Tauern Süd, Gurktaler Alpen



daytime danger cycle of naturally triggered avalanche activity



Low avalanche danger - Increasing wet snow problem

Avalanche danger is assessed as low, but rises slightly during the course of the day. On sunny slopes, naturally triggered wet-snow avalanches can be expected in steep rocky terrain despite the small amounts of snow on the ground.

Snowpack structure

Persistent warmth over the last few days has moistened the snowpack on sunny slopes up to high altitudes, intermediate-altitude slopes are becoming bare of snow. On shady slopes where there are more reserves of cold there are still layers of faceted crystals inside the snowpack which will be activated as weak layers when the snowpack soon becomes moist and destabilized thereby. On smooth slopes gliding activity will again increase.

Weather

On Thursday morning it will be sunny in the Styrian mountains, but clouds will move in during the course of the day from the northwest. Precipitation is not anticipated. Winds will be moderate to brisk on the summits from westerly directions. At 2000 m: +5 degrees; at 1500 m: +10 degrees. On Friday, dense cloud cover will move in, though brisk SW winds will disperse it somewhat. During the afternoon a cold front will arrive from the northwest, bringing lower temperatures and precipitation widespread on Friday night and during the daytime on Saturday.

Outlook

On Friday, wet snow will be the major problem

Translated by Jeffrey McCabe, www.creativtrans.com

Avalanche problems



Danger ratings



Expositions

