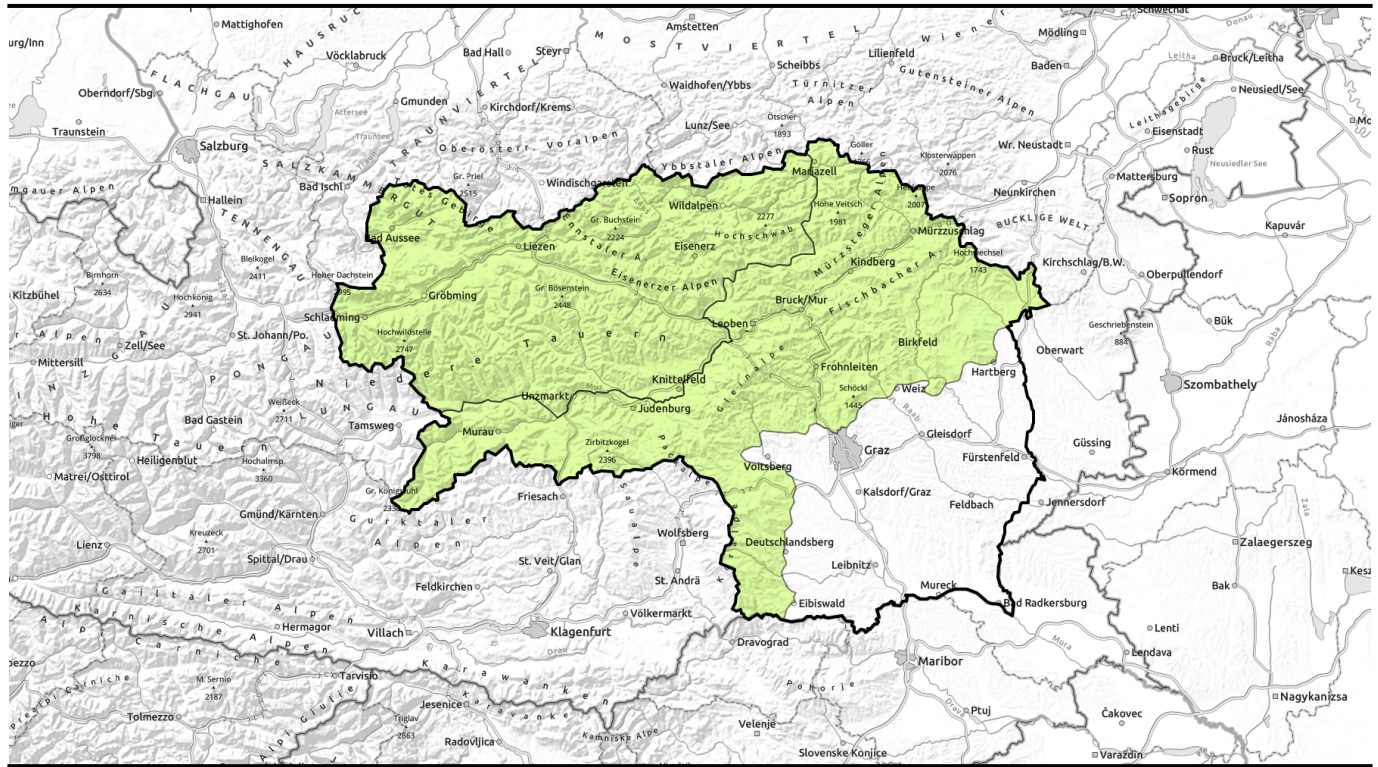



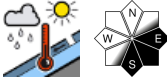

# Avalanche report for Tuesday, 21.03.2023, morning



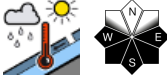
## Increasing avalanche danger during the course of the day

- 

Totes Gebirge, Dachsteingebiet, Schladminger Tauern Nord, Nördliche Wölzer Tauern, Schladminger Tauern Süd, Südliche Wölzer Tauern, Rottenmanner Tauern, Ennstaler Alpen, Seckauer Tauern, Hochschwabgebiet, Eisenerzer Alpen


- 

Mürzteger Alpen, Mürztaler Alpen, Westliche Fischbacher Alpen und Grazer Bergland, Östliche Fischbacher Alpen und Wechselgebiet, Stub- und Gleinalpe, Koralpe, Gurktaler Alpen, Seetaler Alpen



### Avalanche problems

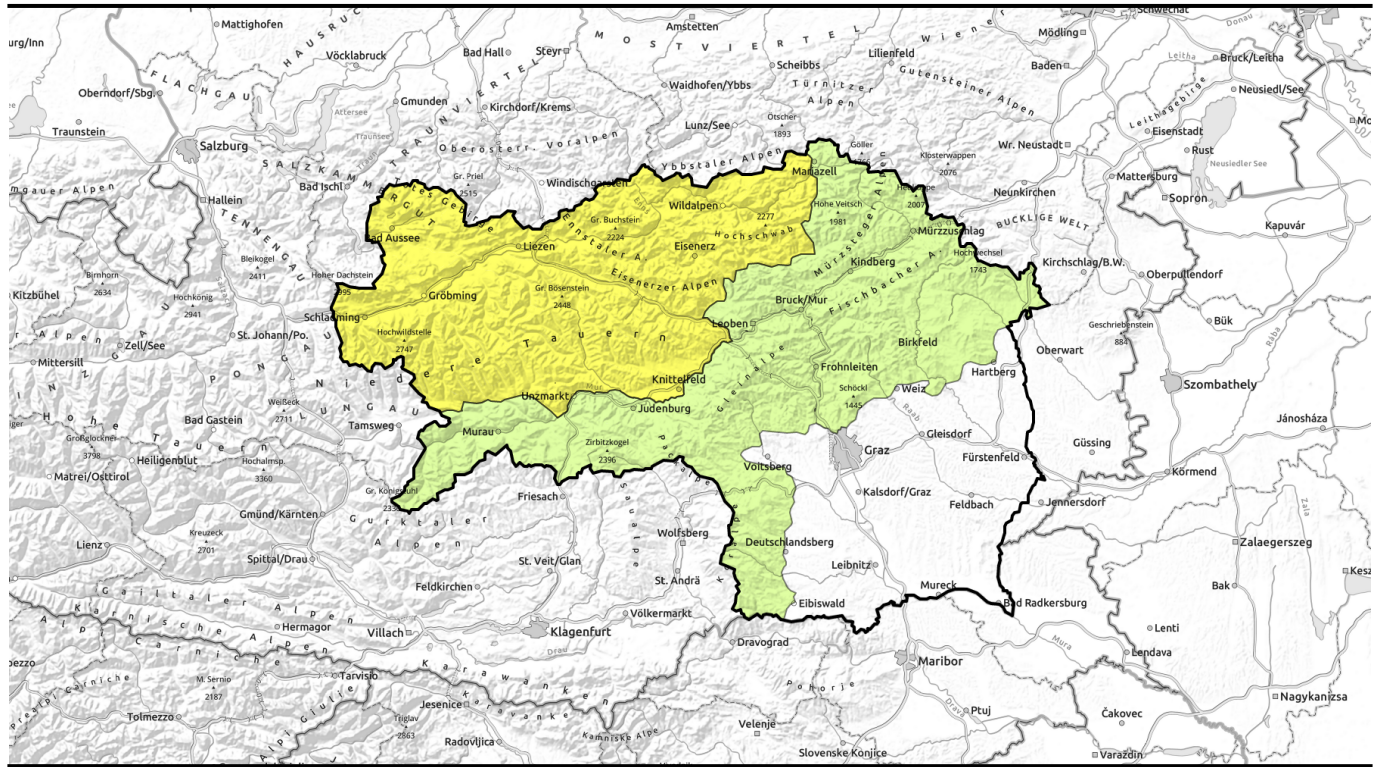


### Danger ratings



### Expositions





## Im Tagesverlauf zunehmende Lawinengefahr!



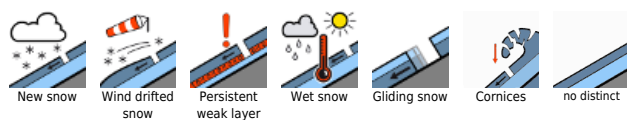
Totes Gebirge, Dachsteingebiet, Schladminger Tauern Nord, Nördliche Wölzer Tauern, Schladminger Tauern Süd, Südliche Wölzer Tauern, Rottenmanner Tauern, Ennstaler Alpen, Seckauer Tauern, Hochschwabgebiet, Eisenerzer Alpen



Mürztoger Alpen, Mürztaler Alpen, Westliche Fischbacher Alpen und Grazer Bergland, Östliche Fischbacher Alpen und Wechselgebiet, Stub- und Gleinalpe, Koralpe, Gurktaler Alpen, Seetaler Alpen



### Avalanche problems



### Danger ratings



### Expositions

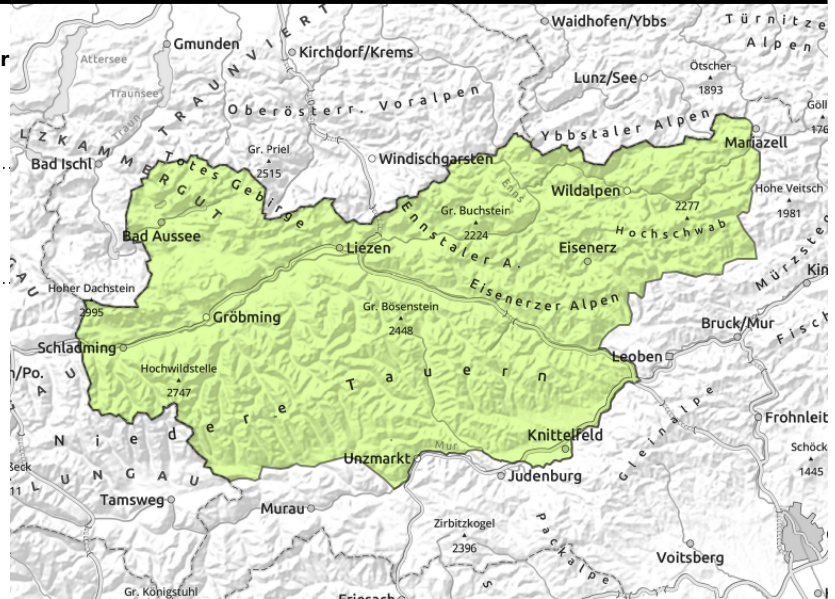


## Avalanche report for Tuesday, 21.03.2023, morning

**Totes Gebirge, Dachsteingebiet, Schladminger Tauern Nord, Nördliche Wölzer Tauern, Schladminger Tauern Süd, Südliche Wölzer Tauern, Rottenmanner Tauern, Ennstaler Alpen, Seckauer Tauern, Hochschwabgebiet, Eisenerzer Alpen**



daytime danger cycle of naturally triggered avalanche activity



### Warmth and solar radiation increasing danger due to wet snow

Avalanche danger is subject to a daytime cycle rising from low to medium. On sunny slopes, small naturally triggered wet-snow avalanches can be expected on steep rocky slopes. When the snowpack is thoroughly wet later in the day, large wet slab avalanches cannot be ruled out. In addition, in extremely steep shady entries into gullies and bowls at high altitudes, isolated slab avalanches can be triggered by minimum additional loading.

### Snowpack structure

Persistent warmth over the last few days has moistened the snowpack on sunny slopes up to high altitudes. On shady slopes where there are more reserves of cold there are still layers of faceted crystals inside the snowpack which will be activated as weak layers when the snowpack soon becomes moist. At high altitudes in Hohes Gebirge, Dachstein, northern Schladminger and Wölzer Tauern there has been 10 cm of fresh snow registered which on sunny slopes is becoming destabilized due to warmth. In general, rapid moistening and destabilization of the snowpack can be expected on sunny slopes during the course of the day.

### Weather

On Tuesday, air pressure will rise, it will be sunny. North of the Main Alpine Ridge there will be clouds, south of it will be pure sunshine. At 2000 m: from +1 to + 3 degrees. Winds will be moderate from W/NW.

Wednesday will be mostly sunny, temperatures will rise. Little wind.

### Outlook

The wet-snow problem will persist. Avalanche danger levels will not change significantly.

#### Avalanche problems



#### Danger ratings

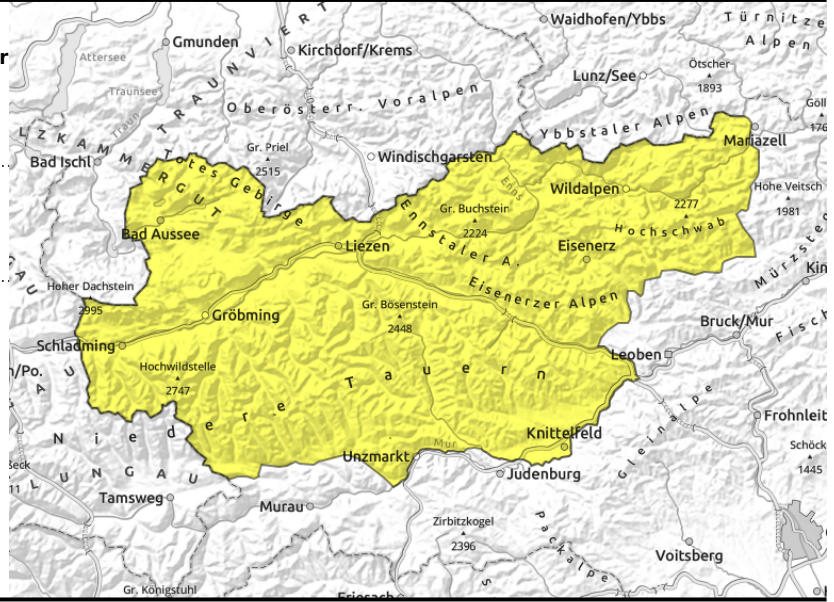


#### Expositions



# Avalanche report for Tuesday, 21.03.2023, afternoon

Totes Gebirge, Dachsteingebiet, Schladminger Tauern Nord, Nördliche Wölzer Tauern, Schladminger Tauern Süd, Südliche Wölzer Tauern, Rottenmanner Tauern, Ennstaler Alpen, Seckauer Tauern, Hochschwabgebiet, Eisenerzer Alpen



daytime danger cycle of naturally triggered avalanche activity

## Warmth and solar radiation increasing danger due to wet snow

Avalanche danger is subject to a daytime cycle rising from low to medium. On sunny slopes, small naturally triggered wet-snow avalanches can be expected on steep rocky slopes. When the snowpack is thoroughly wet later in the day, large wet slab avalanches cannot be ruled out. In addition, in extremely steep shady entries into gullies and bowls at high altitudes, isolated slab avalanches can be triggered by minimum additional loading.

### Snowpack structure

Persistent warmth over the last few days has moistened the snowpack on sunny slopes up to high altitudes. On shady slopes where there are more reserves of cold there are still layers of faceted crystals inside the snowpack which will be activated as weak layers when the snowpack soon becomes moist. At high altitudes in Hohes Gebirge, Dachstein, northern Schladminger and Wölzer Tauern there has been 10 cm of fresh snow registered which on sunny slopes is becoming destabilized due to warmth. In general, rapid moistening and destabilization of the snowpack can be expected on sunny slopes during the course of the day.

### Weather

On Tuesday, air pressure will rise, it will be sunny. North of the Main Alpine Ridge there will be clouds, south of it will be pure sunshine. At 2000 m: from +1 to + 3 degrees. Winds will be moderate from W/NW.

Wednesday will be mostly sunny, temperatures will rise. Little wind.

### Outlook

The wet-snow problem will persist. Avalanche danger levels will not change significantly.

#### Avalanche problems



#### Danger ratings



#### Expositions



# Avalanche report for Tuesday, 21.03.2023

Mürzsteiger Alpen, Mürztaler Alpen, Westliche Fischbacher Alpen und Grazer Bergland, Östliche Fischbacher Alpen und Wechselgebiet, Stub- und Gleinalpe, Koralpe, Gurktaler Alpen, Seetaler Alpen



daytime danger cycle of naturally triggered avalanche activity

## Warmth and solar radiation increasing danger due to wet snow

Avalanche danger is subject to a daytime cycle rising from low to medium. On sunny slopes, small naturally triggered wet-snow avalanches can be expected on steep rocky slopes. When the snowpack is thoroughly wet later in the day, large wet slab avalanches cannot be ruled out.

### Snowpack structure

Persistent warmth over the last few days has moistened the snowpack on sunny slopes up to high altitudes. On shady slopes where there are more reserves of cold there are still layers of faceted crystals inside the snowpack which will be activated as weak layers when the snowpack soon becomes moist. In general, rapid moistening and destabilization of the snowpack can be expected on sunny slopes during the course of the day.

### Weather

On Tuesday, air pressure will rise, it will be sunny. North of the Main Alpine Ridge there will be clouds, south of it will be pure sunshine. At 2000 m: from +1 to + 3 degrees. Winds will be moderate from W/NW.

Wednesday will be mostly sunny, temperatures will rise. Little wind.

### Outlook

The wet-snow problem will persist. Avalanche danger levels will not change significantly.

Translated by Jeffrey McCabe, [www.creativtrans.com](http://www.creativtrans.com)

#### Avalanche problems



#### Danger ratings



#### Expositions

