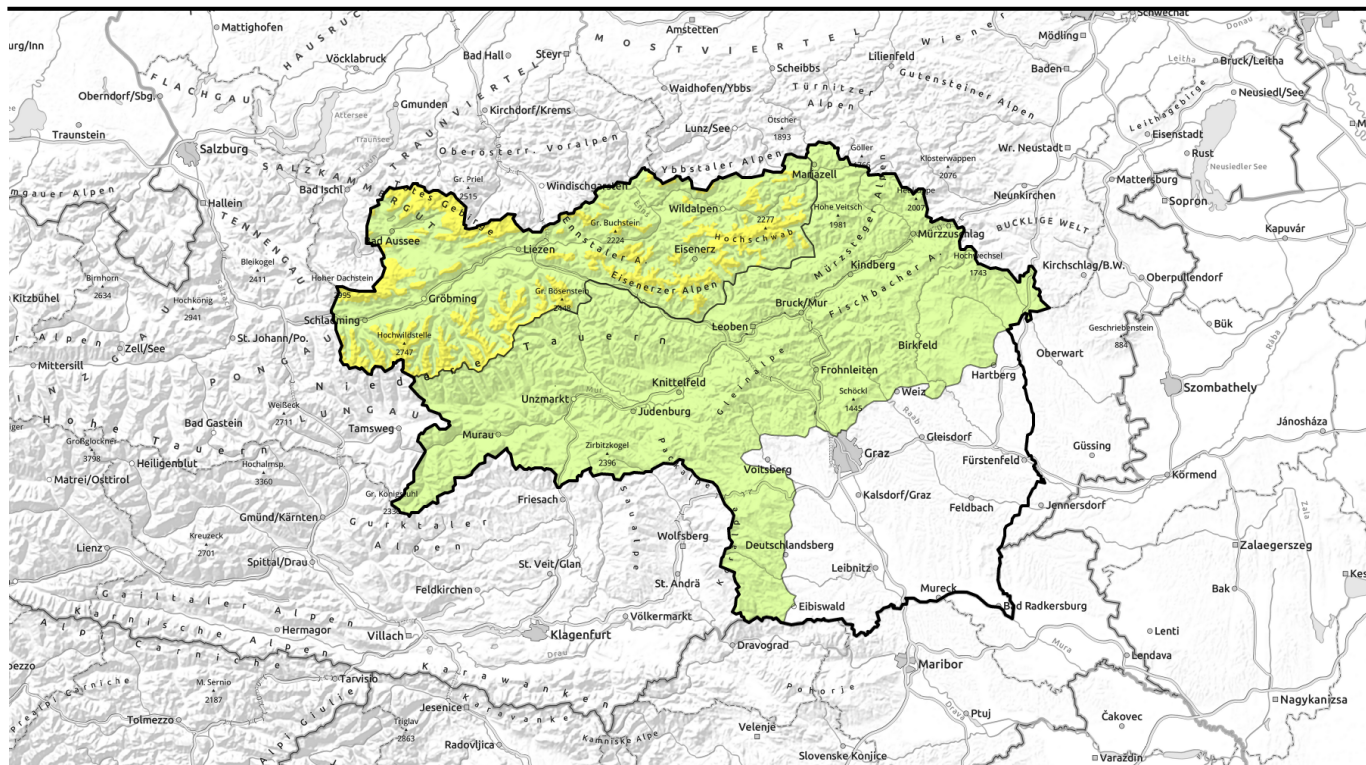


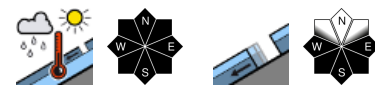
# Avalanche report for Saturday, 18.03.2023



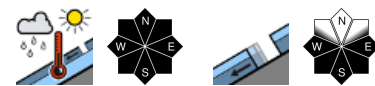
## Persistently warm temperatures. Main danger: naturally triggered wet loose-snow and slab avalanches



Totes Gebirge, Dachsteingebiet, Schladminger Tauern Nord, Ennstaler Alpen, Rottenmann Tauern, Nördliche Wölzer Tauern, Eisenerzer Alpen, Hochschwabgebiet



Mürztoger Alpen, Östliche Fischbacher Alpen und Wechselgebiet, Mürtztaler Alpen, Stub- und Gleinalpe, Koralpe, Seetaler Alpen, Westliche Fischbacher Alpen und Grazer Bergland, Gurktaler Alpen, Seckauer Tauern, Südliche Wölzer Tauern, Schladminger Tauern Süd



### Avalanche problems



### Danger ratings

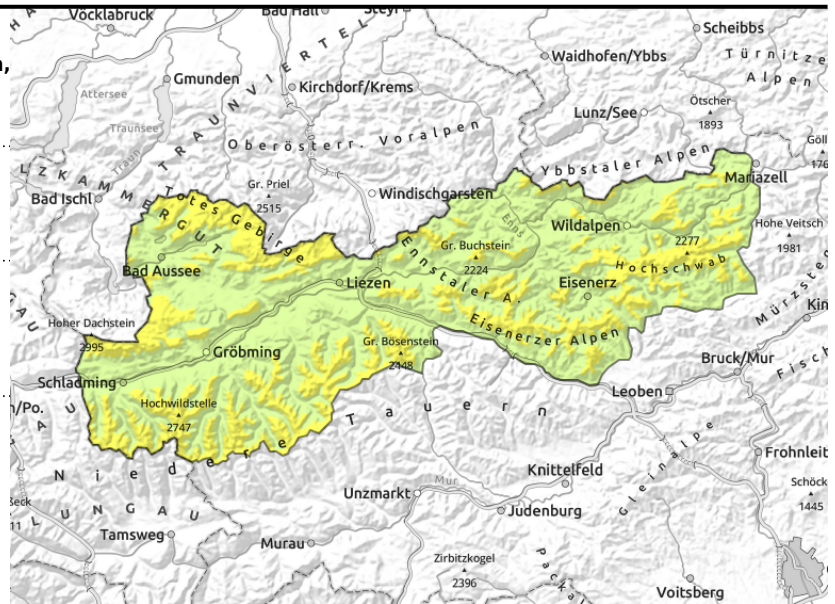
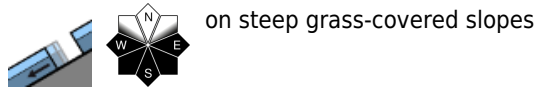
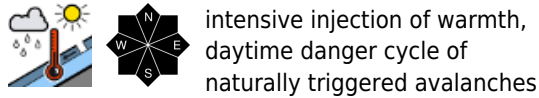


### Expositions



# Avalanche report for **Saturday, 18.03.2023**

**Totes Gebirge, Dachsteingebiet, Schladminger Tauern Nord, Ennstaler Alpen, Rottenmanner Tauern, Nördliche Wölzer Tauern, Eisenerzer Alpen, Hochschwabgebiet**



## Snowpack getting wetter and wetter - Heed wet-snow avalanches

Avalanche danger above the treeline is moderate, below that altitude danger is low. Wet loose-snow and slab avalanches of medium size can be expected on steep slopes where there was snowfall at the beginning of the week which has not yet discharged. During the course of the day, avalanche activity will increase slightly. Below the treeline small-to-medium wet-snow avalanches can release in gullies which have not yet discharged. On steep grassy slopes the gliding movement of the snowpack is increasing. Avoid glide cracks, circumvent them.

### Snowpack structure

Due to the persistent warmth the snowpack moistened on Friday up to high altitudes, and will continue to do so on Saturday, then form a melt-freeze crust overnight which softens rapidly the next day. On sunny slopes the snowpack is often thoroughly wet, west and east-facing slopes are doing so ever more, making the snowpack lose firmness. On shady slopes the snowpack below the treeline has few cold reserves remaining, is becoming increasingly moist on the surface. Above the treeline there are more reserves of cold, but the warmth is making it moist and instable. On isolated shady slopes at high altitudes the snowpack is fragmented, making moistness greater and stability further endangered.

### Weather

On Saturday, sunny weather, often cloudless skies, clouds no disturbance. Outstanding visibility. Winds light to moderate from SW to SE. Slightly less mild than on Friday. At 2000 m: 5 degrees. Sunday will start pleasant, with sunshine, the clouds will soon get heavier however. In the afternoon, fog will wreath many peaks, but not much precipitation is expected. Winds will shift to NW and temperatures drop. At 2000 m: 1 degree in the Northern Alps and 5 degrees on the southern flank of the Alps.

### Outlook

It will remain mild, the wet-snow avalanche activity will continue.

#### Avalanche problems



#### Danger ratings



#### Expositions



# Avalanche report for Saturday, 18.03.2023

Mürzsteiger Alpen, Östliche Fischbacher Alpen und Wechselgebiet, Mürztaler Alpen, Stub- und Gleinalpe, Korralpe, Seetaler Alpen, Westliche Fischbacher Alpen und Grazer Bergland, Gurktaler Alpen, Seckauer Tauern, Südliche Wölzer Tauern, Schladminger Tauern Süd



intensive injection of warmth, daytime danger cycle of naturally triggered avalanches



on steep grass-covered slopes

## Low danger - small wet-snow avalanches on steep slopes

Avalanche danger is LOW. Due to persistent warmth, wet-snow avalanche activity is increasing. Small wet loose-snow and slab avalanches are possible on steep slopes and gullies which have not yet discharged above the treeline. Gliding snow masses on steep grassy slopes is increasing again. At low and intermediate altitudes there is no cohesive snowpack.

### Snowpack structure

Due to the persistent warmth the snowpack moistened on Friday up to high altitudes, and will continue to do so on Saturday, then form a melt-freeze crust overnight which softens rapidly the next day. On sunny slopes the snowpack is often thoroughly wet, west and east-facing slopes are doing so ever more, making the snowpack lose firmness. On shady slopes the snowpack below the treeline has few cold reserves remaining, is becoming increasingly moist on the surface. Above the treeline there are more reserves of cold, but the warmth is making it moist and instable. On isolated shady slopes at high altitudes the snowpack is fragmented, making moistness greater and stability further endangered.

### Weather

On Saturday, sunny weather, often cloudless skies, clouds no disturbance. Outstanding visibility. Winds light to moderate from SW to SE. Slightly less mild than on Friday. At 2000 m: 5 degrees. Sunday will start pleasant, with sunshine, the clouds will soon get heavier however. In the afternoon, fog will wreath many peaks, but not much precipitation is expected. Winds will shift to NW and temperatures drop. At 2000 m: 1 degree in the Northern Alps and 5 degrees on the southern flank of the Alps.

### Outlook

It will remain mild, the wet-snow avalanche activity will continue.

Translated by Jeffrey McCabe, [www.creativtrans.com](http://www.creativtrans.com)

#### Avalanche problems



#### Danger ratings



#### Expositions

