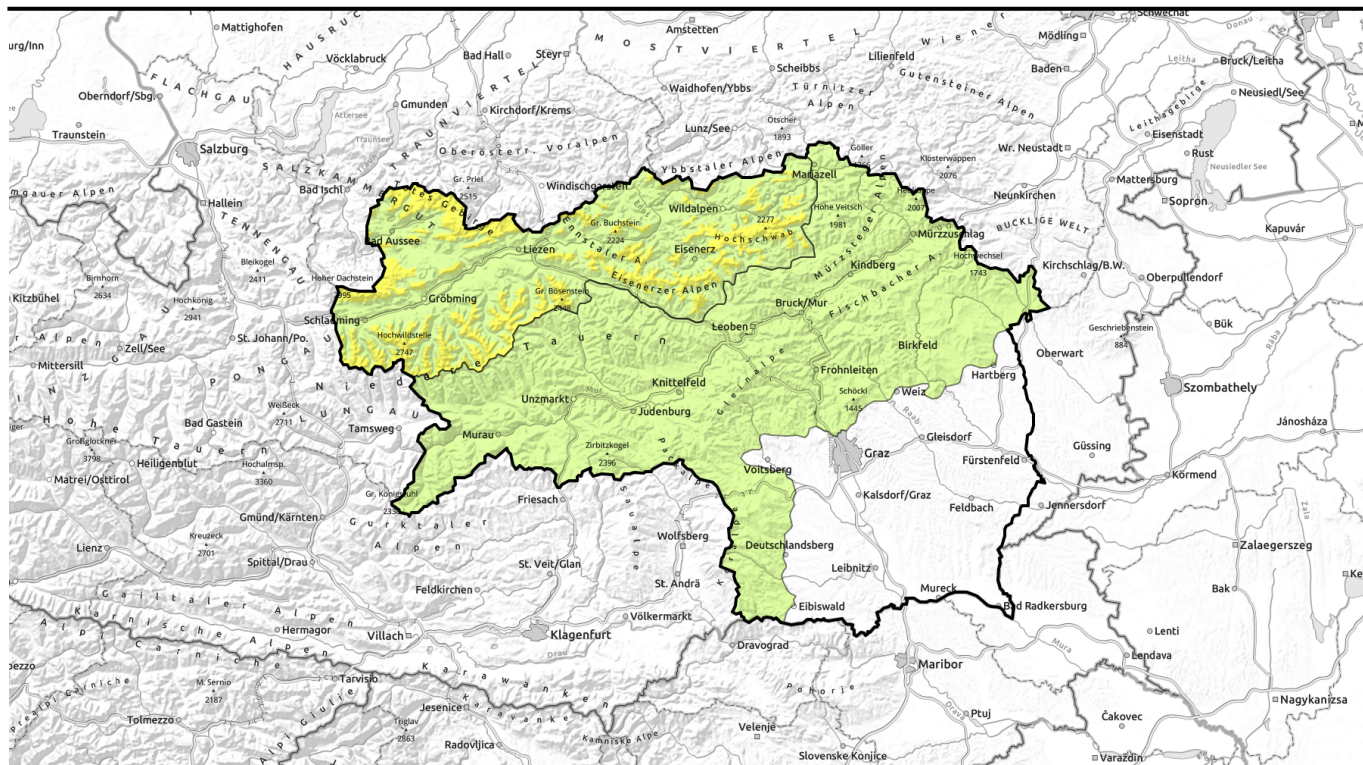


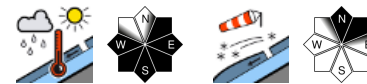
Avalanche report for Friday, 17.03.2023



Noticeably higher temperatures. Wet loose-snow and slab avalanches increasing during the daytime



Totes Gebirge, Dachsteingebiet, Schladminger Tauern Nord, Ennstaler Alpen, Rottenmanner Tauern, Nördliche Wölzer Tauern, Eisenerzer Alpen, Hochschwabgebiet



Mürztoger Alpen, Östliche Fischbacher Alpen und Wechselgebiet, Mürtztaler Alpen, Stub- und Gleinalpe, Koralpe, Seetaler Alpen, Westliche Fischbacher Alpen und Grazer Bergland, Gurktaler Alpen, Seckauer Tauern, Südliche Wölzer Tauern, Schladminger Tauern Süd



Avalanche problems



Danger ratings



Expositions



Avalanche report for Friday, 17.03.2023

Totes Gebirge, Dachsteingebiet, Schladminger Tauern Nord, Ennstaler Alpen, Rottenmanner Tauern, Nördliche Wölzer Tauern, Eisenerzer Alpen, Hochschwabgebiet



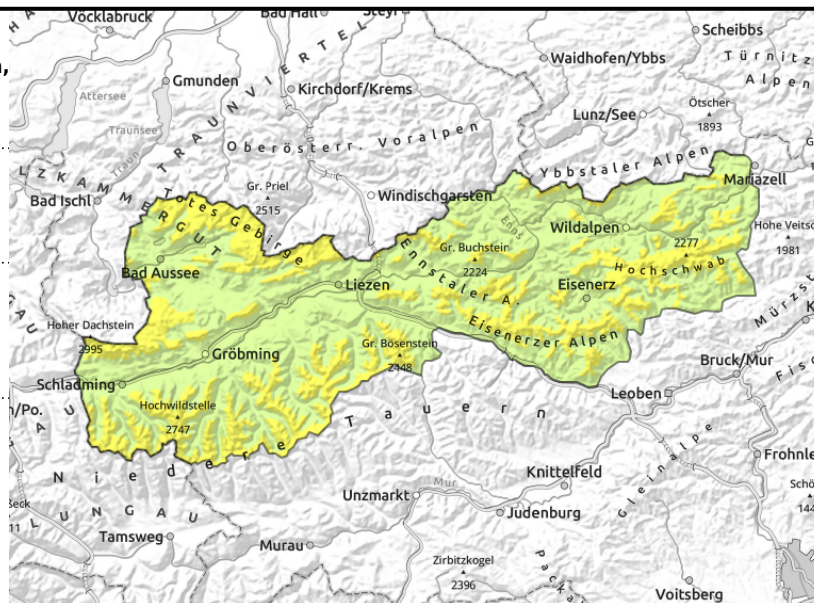
forestline



intensive daytime warming, daytime cycle of avalanche activity



in gullies, steep bowls, behind abrupt discontinuities in the terrain



Moderate avalanche danger above the timberline - Heed daytime danger cycle of wet-snow avalanche activity

Avalanche danger above the treeline is MODERATE, below that altitude danger is LOW. The snowdrifts have been able to settle and stabilize. On shady high-altitude slopes, particularly the entries into gullies and bowls and behind abrupt discontinuities in the terrain have snowdrift masses which in isolated cases can trigger by minimum additional loading. Avalanches can grow to medium size. Due to the soaring temperatures, noticeably increase in wet-snow avalanches can be expected. Wet loose-snow avalanches and slab avalanches can be expected particularly on freshly snowed slopes. Below the treeline, hardly any fresh snow was deposited. but in gullies which have not yet discharged small-to-medium set-snow avalanches can still release. On steep grass-covered slopes the glide-snow activity is increasing, glide-cracks should be seen as indicators of imminent danger and be circumvented.

Snowpack structure

In general, the old snowpack is quite stable and melt-freeze encrusted up to high altitudes, at ground level it is moist. Due to noticeably rising temperatures the snowpack swiftly becomes moist. Weak layers inside the older snowdrift accumulations forfeit stability through their initial moistening. At low altitudes there is, at best, a fragmented snowpack.

Weather

On Friday it will be noticeably warmer in the mountains, mildest in the northwest. At 2000 m: 10 degrees at midday, elsewhere the temperatures will rise to 3-7 degrees at this altitude. Sunshine and high-altitude cirrus clouds. Winds will be light to moderate, brisk in the Hochschwab region, from southerly directions.

Also on Saturday, sunny and unperturbed conditions will continue. Often cloudless skies, high-altitude clouds will not appear before afternoon. Visibility will be outstanding. Winds will be light to moderate from SW to SE. At 2000 m: 5 degrees.

Avalanche problems



Danger ratings



Expositions



Avalanche report for **Friday, 17.03.2023**

Outlook

It will remain mild, wet-snow avalanche activity will abide.

Avalanche problems



Danger ratings



Expositions



Avalanche report for Friday, 17.03.2023

Mürzsteiger Alpen, Östliche Fischbacher Alpen und Wechselgebiet, Mürztaler Alpen, Stub- und Gleinalpe, Koralpe, Seetaler Alpen, Westliche Fischbacher Alpen und Grazer Bergland, Gurktaler Alpen, Seckauer Tauern, Südliche Wölzer Tauern, Schladminger Tauern Süd



soaring temperatures, daytime cycle of naturally triggered avalanches

Low danger- wet-snow avalanches on steep slopes

Avalanche danger is LOW. Thin snowdrift patches have settled and stabilized. Due to higher temperatures the wet-snow avalanche activity will increase during the daytime. Small, wet loose-snow and slab avalanches can trigger on steep freshly snowed slopes.

Snowpack structure

The old snowpack is stable and melt-freeze encrusted up to high altitudes, at ground level it is moist. Due to strong rises in temperature the snowpack swiftly becomes moist and loses its firmness. At low altitudes the snowpack is, at best, much fragmented.

Weather

On Friday it will be noticeably warmer in the mountains, mildest in the northwest. At 2000 m: 10 degrees at midday, elsewhere the temperatures will rise to 3-7 degrees at this altitude. Sunshine and high-altitude cirrus clouds. Winds will be light to moderate, brisk in the Hochschwab region, from southerly directions.

Also on Saturday, sunny and unperturbed conditions will continue. Often cloudless skies, high-altitude clouds will not appear before afternoon. Visibility will be outstanding. Winds will be light to moderate from SW to SE. At 2000 m: 5 degrees.

Outlook

It will remain mild, wet-snow avalanche activity will abide.

Translated by Jeffrey McCabe, www.creativtrans.com

Avalanche problems



Danger ratings



Expositions

