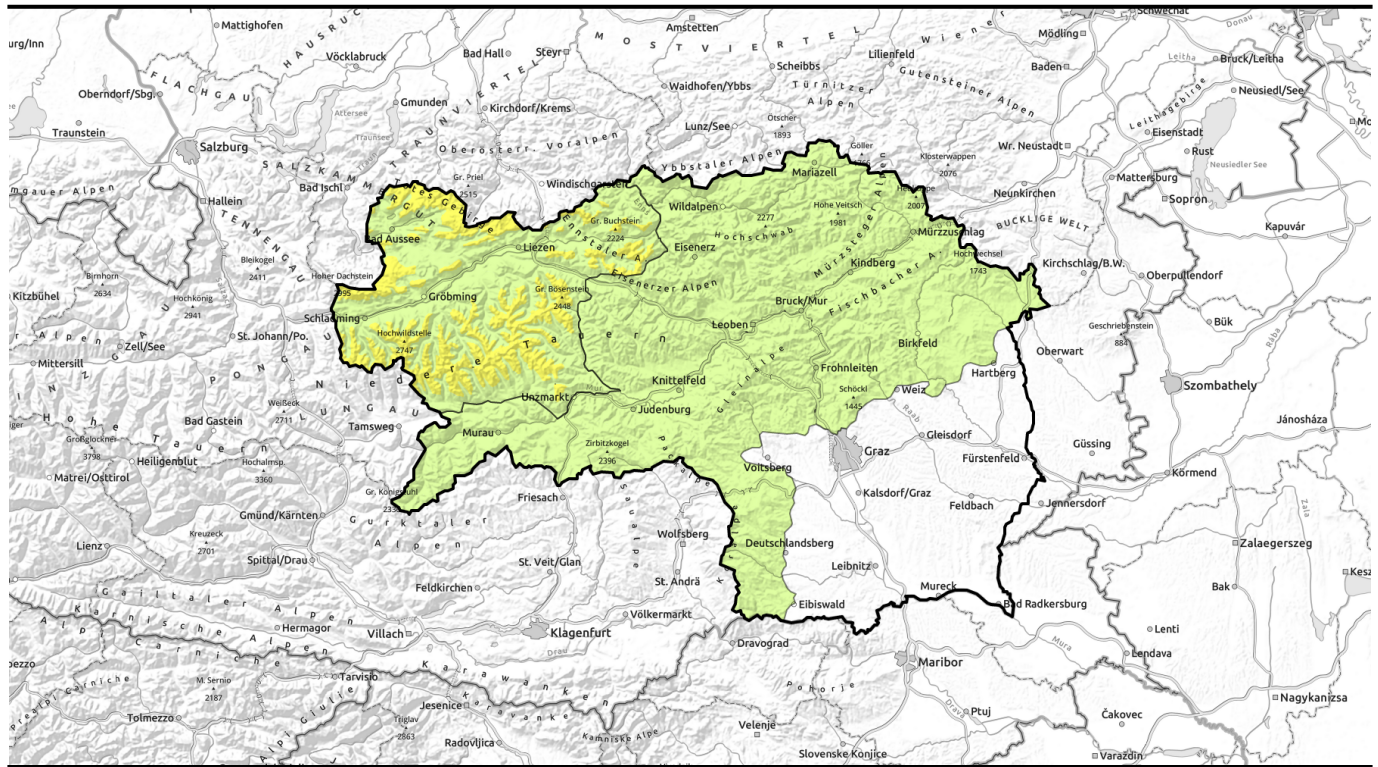


Avalanche report for Saturday, 11.03.2023



Unfavorable weather at high altitudes. Storm-to-gale strength winds.



1900 m

Totes Gebirge, Dachsteingebiet, Schladminger Tauern Nord, Ennstaler Alpen, Rottenmanner Tauern, Schladminger Tauern Süd, Nördliche Wölzer Tauern, Südliche Wölzer Tauern



Gurktaler Alpen, Seetaler Alpen, Koralpe, Stub- und Gleinalpe, Östliche Fischbacher Alpen und Wechselgebiet, Mürzsteger Alpen, Mürztaler Alpen, Westliche Fischbacher Alpen und Grazer Bergland, Hochschwabgebiet, Eisenerzer Alpen, Seckauer Tauern



Avalanche problems



Danger ratings

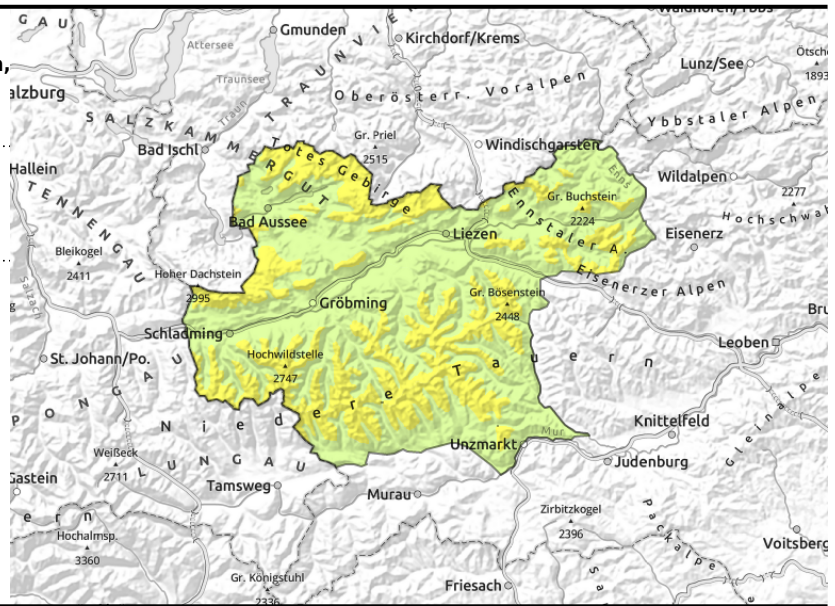
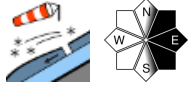
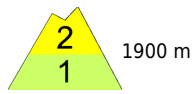


Expositions



Avalanche report for Saturday, 11.03.2023

Totes Gebirge, Dachsteingebiet, Schladminger Tauern Nord, Ennstaler Alpen, Rottenmanner Tauern, Schladminger Tauern Süd, Nördliche Wölzer Tauern, Südliche Wölzer Tauern



Storm winds, fresh snowdrift accumulations

Avalanche danger above 1900 m is moderate, danger is low below that altitude. New danger zones are expected in NE-SE aspects. Storm winds are transporting the at high altitudes, depositing it distant from ridgelines, behind abrupt discontinuities in the terrain. Fresh drifts are brittle and easily triggered even be minimum additional loading.

Snowpack structure

With the mass of cold air the snowpack surface is stabilizing, a melt-freeze crust is forming. Storm winds are transporting snow, depositing it atop this crust. Weak layers exist inside the snowpack; also the bonding to the fresh snowdrifts with the old snowpack is insufficient. The old snowpack is generally stable. Ground level layers are moist-to-wet.

Weather

In early morning, gale-strength winds will be blowing (gusts up to 140 km/hr), slackening off somewhat during the day, but persisting at storm strength. Winds are W/NW. Intermittent snowfall in the morning on the northern flank of the Alps. Icy cold. On the southern flank of the Alps, mostly sunny and dry. At 2000 m: -10 degrees, subjectively it feels much colder.

Outlook

On Sunday, sunny at the start, but clouds will swiftly move in from the west. From Schladminger Tauern into Ennstaler Alpen, light precipitation will set in during the afternoon. Temperatures will rise, the snowfall level ascend to nearly 1200 m. Winds will be brisk from the northwest. No significant change is expected.

Avalanche problems



Danger ratings

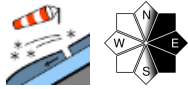


Expositions



Avalanche report for Saturday, 11.03.2023

Gurktaler Alpen, Seetaler Alpen, Koralpe, Stub- und Gleinalpe, Östliche Fischbacher Alpen und Wechselgebiet, Mürzsteger Alpen, Mürztaler Alpen, Westliche Fischbacher Alpen und Grazer Bergland, Hochschwabgebiet, Eisenerzer Alpen, Seckauer Tauern



Storm - fresh snowdrift accumulations

Avalanche danger is low. Isolated danger zones lie in extended eastern aspects. Snowdrift patches can be easily triggered, but releases will remain small-sized.

Snowpack structure

The snowpack has been able to settle well, the stormy NW winds are transporting snow onto a hardened old snowpack surface. The snowdrift patches have poor bonding to the old snowpack. As temperatures drop, it freezes at intermediate altitudes. In Graz mountains there is little snow on the ground.

Weather

In early morning, gale-strength winds will be blowing (gusts up to 140 km/hr), slackening off somewhat during the day, but persisting at storm strength. Winds are W/NW. Intermittent snowfall in the morning on the northern flank of the Alps. Icy cold. On the southern flank of the Alps, mostly sunny and dry. At 2000 m: -10 degrees, subjectively it feels much colder.

Outlook

On Sunday, sunny at the start, but clouds will swiftly move in from the west. Winds will be brisk from the northwest. No significant change is expected.

Translated by Jeffrey McCabe, www.creativtrans.com

Avalanche problems



Danger ratings



Expositions

