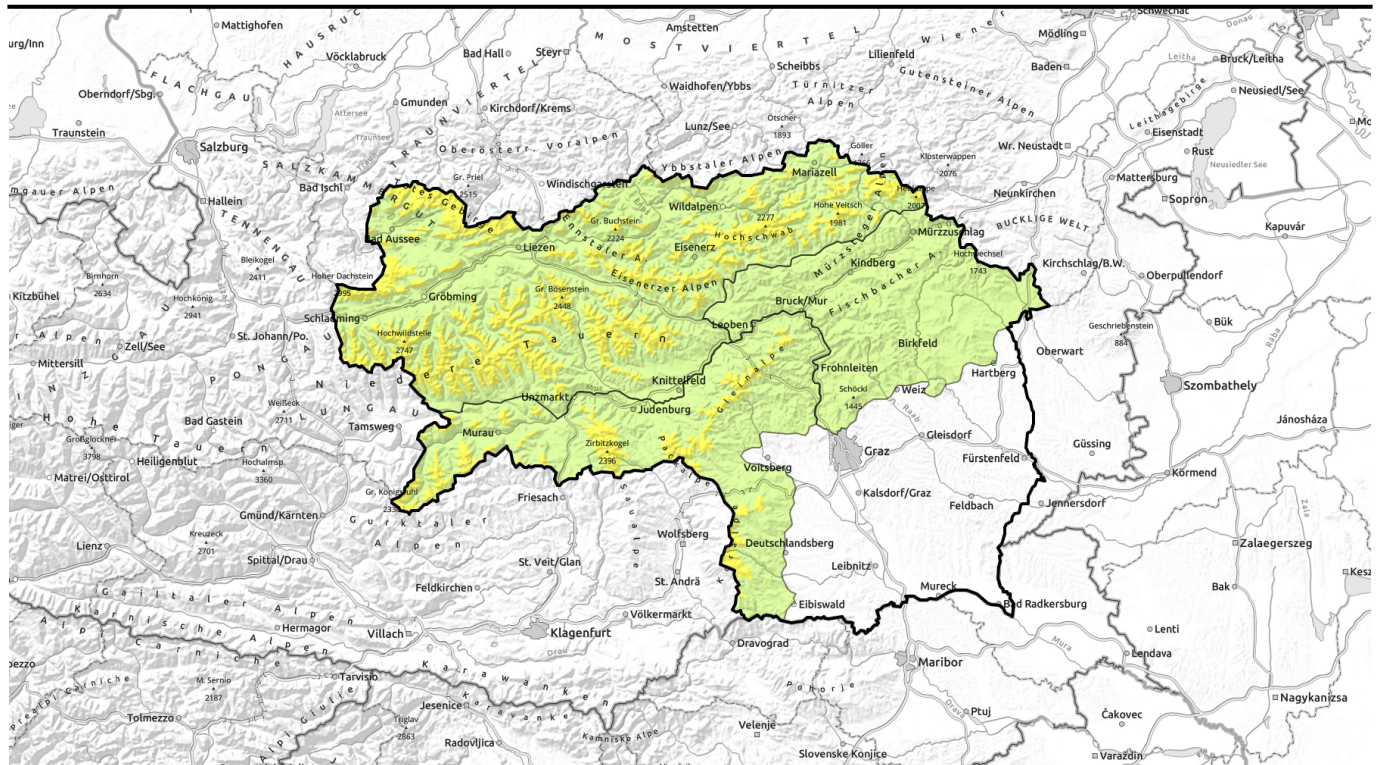


Avalanche report for Tuesday, 28.02.2023



Moderate avalanche danger. Naturally triggered loose-snow avalanches due to warmth.

	<p>timberline Totes Gebirge, Dachsteingebiet, Schladminger Tauern Nord, Nördliche Wölzer Tauern, Ennstaler Alpen, Rottenmanner Tauern, Schladminger Tauern Süd, Hochschwabgebiet, Mürtzsteger Alpen, Seckauer Tauern, Südliche Wölzer Tauern, Eisenerzer Alpen</p>	
	<p>Östliche Fischbacher Alpen und Wechselgebiet, Mürtztaler Alpen, Westliche Fischbacher Alpen und Grazer Bergland</p>	
	<p>timberline Gurktaler Alpen, Seetaler Alpen, Stub- und Gleinalpe, Koralpe</p>	

Avalanche problems



Danger ratings

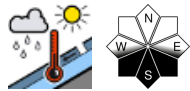
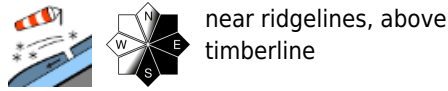
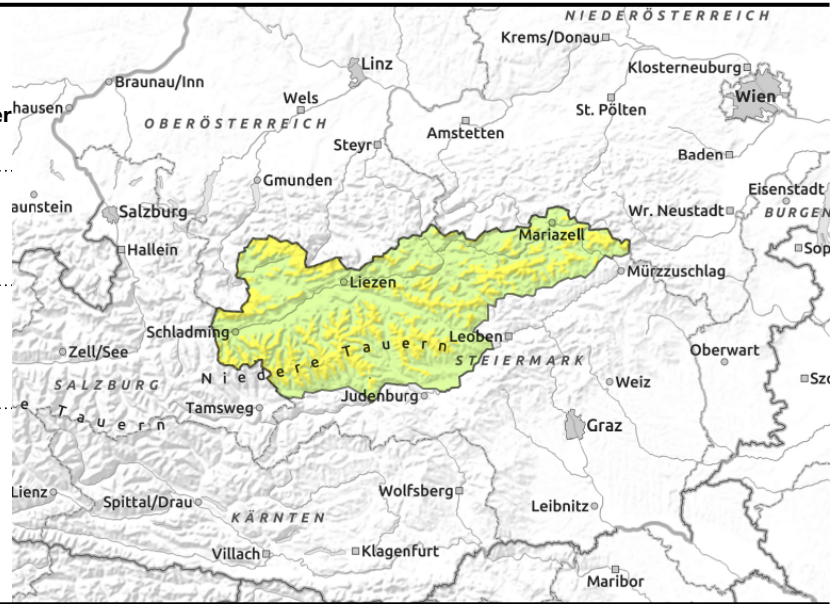


Expositions



Avalanche report for Tuesday, 28.02.2023

Totes Gebirge, Dachsteingebiet, Schladminger Tauern Nord, Nördliche Wölzer Tauern, Ennstaler Alpen, Rottenmanner Tauern, Schladminger Tauern Süd, Hochschwabgebiet, Mürzsteiger Alpen, Seckauer Tauern, Südliche Wölzer Tauern, Eisenerzer Alpen



Naturally triggered avalanches on sunny slopes

Avalanche danger below the treeline is low, above that altitude danger is moderate. Fresh snowfall from the weekend plus strong-to-storm strength winds generated fresh snowdrift accumulations. Danger zones are found primarily on E/S facing slopes where medium sized slab avalanches can be triggered even by minimum additional loading. Due to higher temperatures and solar radiation, naturally triggered medium sized avalanches are expected during the afternoon at latest, particularly on south-facing slopes. At intermediate altitudes also wet loose-snow avalanches are possible.

Snowpack structure

Due to the cold, the fresh snow has not yet been able to settle. In the Northern Alps and Niedere Tauern there is 10-30 cm of fresh snow lying atop a hardened melt-freeze crust. Bonding of the cold snow to the warm crust is poor. The ground-level layer is moist up to high altitudes.

Weather

In the Northern Alps, quite sunny right from the start, often cloudless skies. South of the Niedere Tauern and along the Styrian rimline ranges, tenacious clouds and fog, dispersing only slowly. Winds will be moderate from the northeast. Temperatures only slightly higher. At 2000 m: -6 degrees.

Outlook

Weather on Wednesday: in the Northern Alps, light southerly winds, sunshine, good mountain weather. On the southern flank of the Tauern and along the rimline ranges, fog and clouds will persist, plus moderate southerly winds, slightly higher temperatures. At 2000 m: -5 degrees on Zirbitzkogel, -2 degrees on Grimming. Avalanche danger will recede.

Avalanche problems



Danger ratings

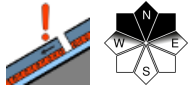


Expositions



Avalanche report for Tuesday, 28.02.2023

Östliche Fischbacher Alpen und Wechselgebiet, Mürztaler Alpen, Westliche Fischbacher Alpen und Grazer Bergland



Persistent weak layer - isolated danger zones

Avalanche danger is low. A few danger zones for slab releases are limited to high altitudes zones on extremely steep shady slopes above 1500 m. Slab avalanches generally triggerable only by large additional loading. On east-facing slopes, fresh drifts have accumulated, easily triggered, but only slides are anticipated.

Snowpack structure

The snowpack was able to settle well, the fresh snow (about 10 cm) was cold and blanketed a hardened old snowpack surface (or meadow). The lower temperatures have had a beneficial effect. On high-altitude shady slopes the hardened surfaces are everywhere, some slopes are windblown. Due to warmth last week the slopes have become increasingly bare of snow.

Weather

South of the Niedere Tauern and along the Styrian rimline ranges, tenacious clouds and fog, dispersing only slowly. Winds will be moderate from the northeast. Temperatures only slightly higher. At 2000 m: -6 degrees.

Outlook

Weather on Wednesday: in the Northern Alps, light southerly winds, sunshine, good mountain weather. On the southern flank of the Tauern and along the rimline ranges, fog and clouds will persist, plus moderate southerly winds, slightly higher temperatures. At 2000 m: -5 degrees on Zirbitzkogel, -2 degrees on Grimming. Avalanche danger will recede.

Avalanche problems



Danger ratings

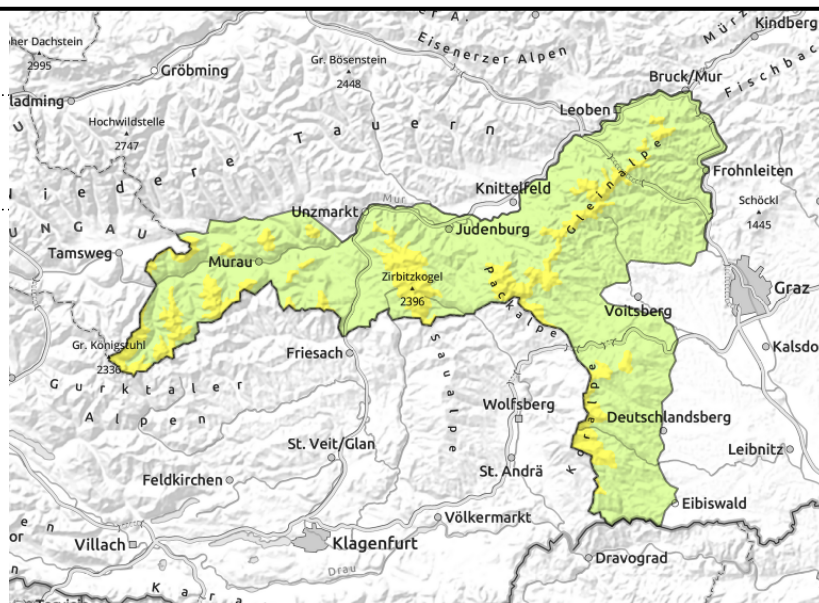
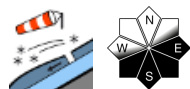


Expositions



Avalanche report for Tuesday, 28.02.2023

Gurktaler Alpen, Seetaler Alpen, Stub- und Gleinalpe, Koralpe



Cold fresh snow

Avalanche danger below the treeline is low, danger is moderate above that altitude. Fresh snowfall from the weekend plus strong winds have generated new snowdrift accumulations. Danger zones occur mostly on E/SW facing steep slopes, where medium-sized slab avalanches can be triggered even by minimum additional loading, e.g. one sole skier. As SE winds arise, fresh snowdrift accumulations will be deposited on north facing slopes - they are triggerable.

Snowpack structure

From Turracher Höhe to Koralpe, 20-35 cm of fresh snow has been registered. Due to dropping temperatures on Saturday, a melt-freeze crust formed at intermediate and high altitudes, atop of which the fresh snow was deposited. Bonding of the cold new snow to the warmer melt-freeze crust beneath it is insufficient.

Weather

South of the Niedere Tauern and along the Styrian rimline ranges, tenacious clouds and fog, dispersing only slowly. Winds will be moderate from the northeast. Temperatures only slightly higher. At 2000 m: -6 degrees.

Outlook

Weather on Wednesday: in the Northern Alps, light southerly winds, sunshine, good mountain weather. On the southern flank of the Tauern and along the rimline ranges, fog and clouds will persist, plus moderate southerly winds, slightly higher temperatures. At 2000 m: -5 degrees on Zirbitzkogel, -2 degrees on Grimming. Avalanche danger will recede.

Translated by Jeffrey McCabe, www.creativtrans.com

Avalanche problems



Danger ratings



Expositions

