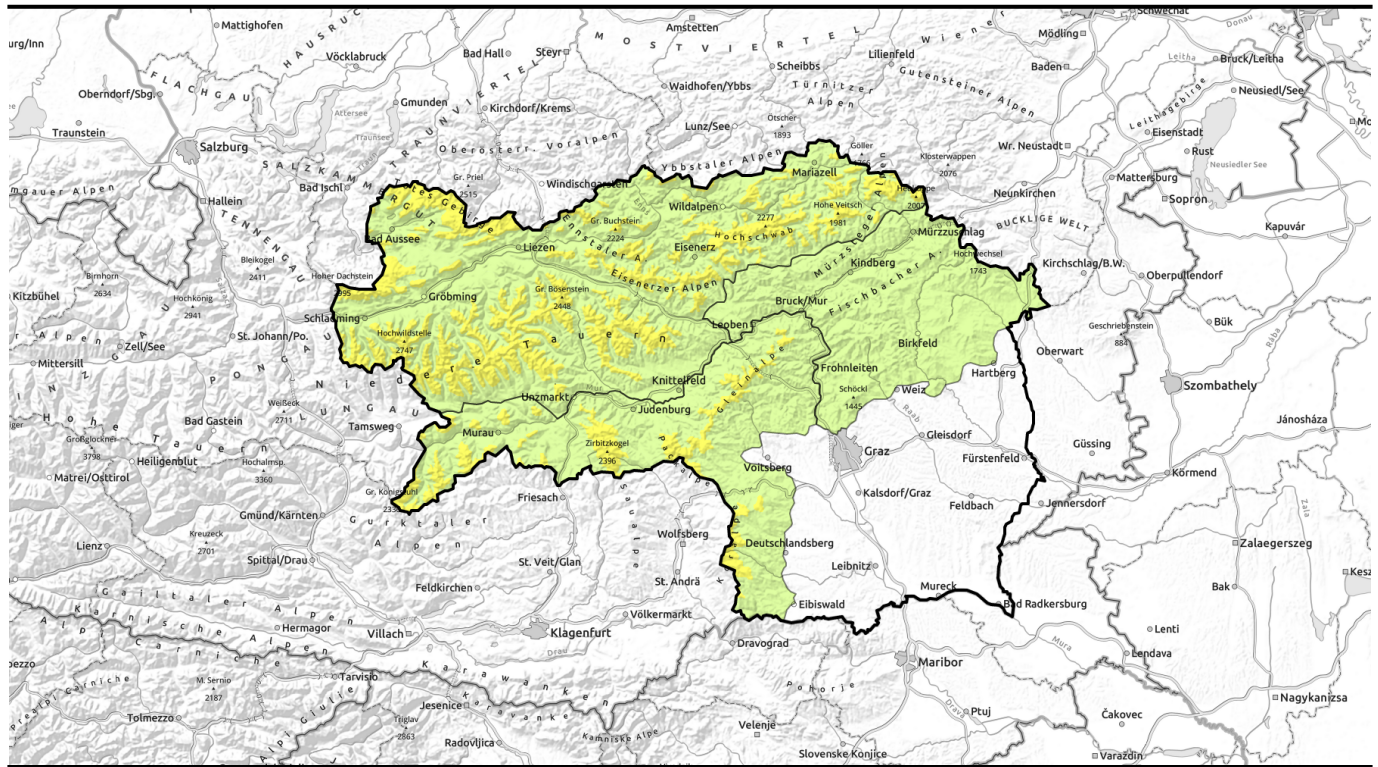


# Avalanche report for Monday, 27.02.2023



## Moderate avalanche danger in northern regions of Styria due to fresh snowdrifts

	<p>timberline Totes Gebirge, Dachsteingebiet, Schladminger Tauern Nord, Nördliche Wölzer Tauern, Ennstaler Alpen, Rottenmanner Tauern, Schladminger Tauern Süd, Hochschwabgebiet, Mürtzsteger Alpen, Seckauer Tauern, Südliche Wölzer Tauern, Eisenerzer Alpen</p>	
	<p>Östliche Fischbacher Alpen und Wechselgebiet, Mürtztaler Alpen, Westliche Fischbacher Alpen und Grazer Bergland</p>	
	<p>timberline Gurktaler Alpen, Seetaler Alpen, Stub- und Gleinalpe, Koralpe</p>	

### Avalanche problems



### Danger ratings

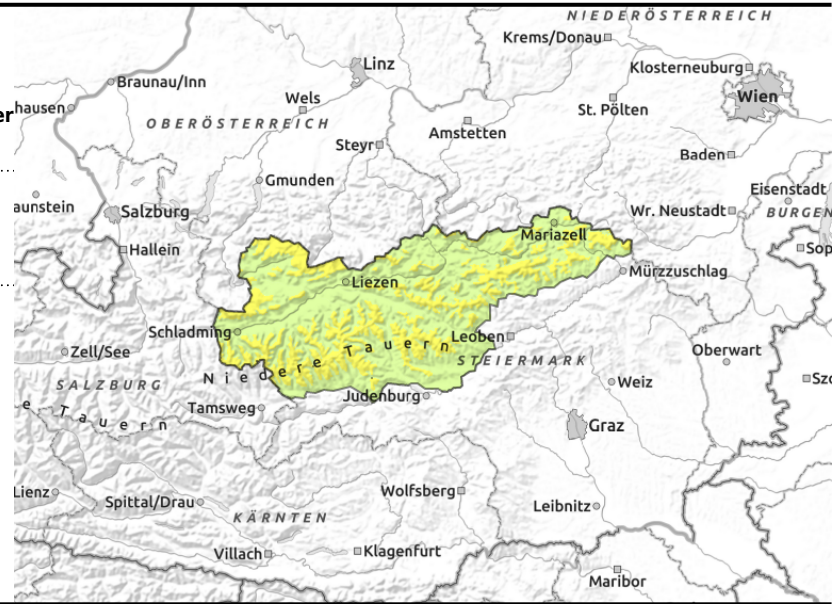
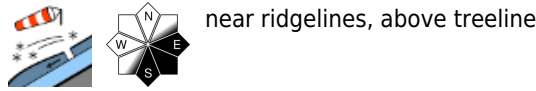


### Expositions



# Avalanche report for Monday, 27.02.2023

Totes Gebirge, Dachsteingebiet, Schladminger Tauern Nord, Nördliche Wölzer Tauern, Ennstaler Alpen, Rottenmanner Tauern, Schladminger Tauern Süd, Hochschwabgebiet, Mürzsteger Alpen, Seckauer Tauern, Südliche Wölzer Tauern, Eisenerzer Alpen



## Very cold at high altitudes. Snowpack is slowly settling.

Avalanche danger below the treeline is low, danger above the treeline is moderate. Fresh fallen snow and strong-to-stormy winds generated new snowdrift accumulations, danger zones are located especially on E/S facing steep slopes where even minimum additional loading can trigger medium-sized slab avalanches.

### Snowpack structure

Due to dropping temperatures on Saturday a melt-freeze crust has formed at lower and intermediate altitudes. Atop of it in the Northern Alps and Niedere Tauern, 10-20 cm of fresh snow has been deposited. Ground level layers are moist up to high altitudes.

### Weather

Dense clouds veil the peaks, visibility is severely reduced. Initially minor snowfall in Upper Styria, then easing. Sunshine will be rare at the beginning of the week, clouds will persist. It is icy cold. At 2000 m: -13 degrees. Moderate NE winds.

### Outlook

Tuesday's weather: on the northern flank of the Alps, quite sunny from the start. South of the Niedere Tauern and along the Styrian rimline ranges, clouds will persist, slowly disperse during the daytime. Winds will be moderate from the northeast. Still very cold. At 2000 m: -9 degrees.

Avalanche danger levels will slowly recede.

#### Avalanche problems



#### Danger ratings

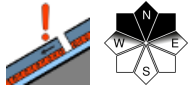


#### Expositions



# Avalanche report for Monday, 27.02.2023

Östliche Fischbacher Alpen und Wechselgebiet, Mürztaler Alpen, Westliche Fischbacher Alpen und Grazer Bergland



## Persistent weak layer - isolated danger zones

Avalanche danger is low. A few danger zones for slab releases are limited to high altitudes zones on extremely steep shady slopes above 2000 m. Slab avalanches generally triggerable only by large additional loading. On east-facing slopes, fresh drifts have accumulated, easily triggered, but only slides are anticipated.

### Snowpack structure

The snowpack was able to settle well, the fresh snow (about 10 cm) was cold and blanketed a hardened old snowpack surface (or meadow). The lower temperatures have had a beneficial effect. On high-altitude shady slopes the hardened surfaces are everywhere, some slopes are windblown. Due to warmth last week the slopes have become increasingly bare of snow.

### Weather

On the southern flank of the Alps, dry right from the start, but little sunshine, clouds will persist. It is icy cold. At 2000 m: -13 degrees. Moderate NE winds.

### Outlook

Tuesday's weather: on the northern flank of the Alps, quite sunny from the start. South of the Niedere Tauern and along the Styrian rimline ranges, clouds will persist, slowly disperse during the daytime. Winds will be moderate from the northeast. Still very cold. At 2000 m: -9 degrees.

No significant change is expected in avalanche danger levels.

#### Avalanche problems



#### Danger ratings

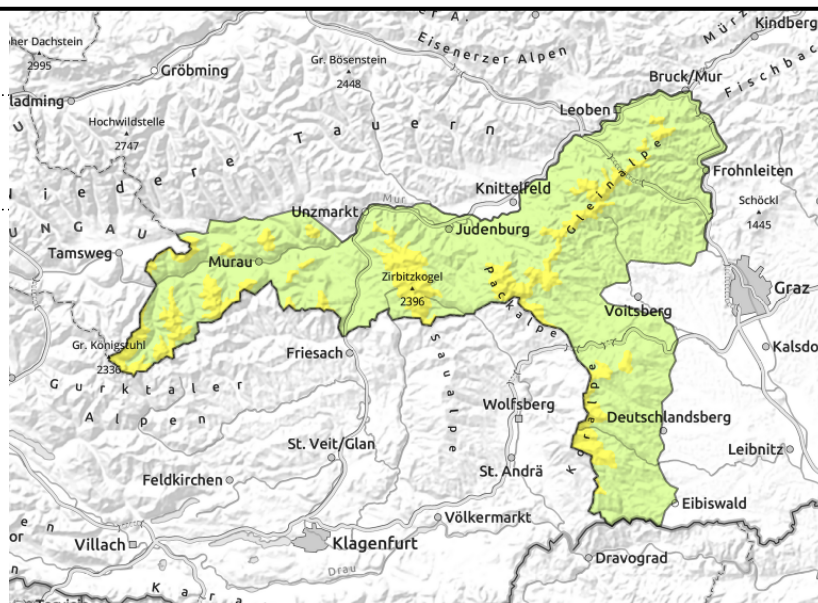
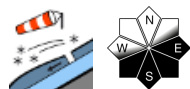


#### Expositions



# Avalanche report for Monday, 27.02.2023

## Gurktaler Alpen, Seetaler Alpen, Stub- und Gleinalpe, Koralpe



## Cold fresh snow

Avalanche danger below the treeline is low, danger is moderate above that altitude. Fresh snowfall from the weekend plus strong winds have generated new snowdrift accumulations. Danger zones occur mostly on E/SW facing steep slopes, where medium-sized slab avalanches can be triggered even by minimum additional loading, e.g. one sole skier.

## Snowpack structure

From Turracher Höhe to Koralpe, 20-35 cm of fresh snow has been registered. Due to dropping temperatures on Saturday, a melt-freeze crust formed at intermediate and high altitudes, atop of which the fresh snow was deposited. Bonding of the cold new snow to the warmer melt-freeze crust beneath it is insufficient.

## Weather

Dense cloud veil the peaks, visibility is severely limited, sunshine is rare, the clouds will persist. It is icy cold. At 2000 m: -13 degrees. Moderate NE winds.

## Outlook

Tuesday's weather: on the northern flank of the Alps, quite sunny from the start. South of the Niedere Tauern and along the Styrian rimline ranges, clouds will persist, slowly disperse during the daytime. Winds will be moderate from the northeast. Still very cold. At 2000 m: -9 degrees.

Avalanche danger levels will slowly recede.

Translated by Jeffrey McCabe, [www.creativtrans.com](http://www.creativtrans.com)

### Avalanche problems



### Danger ratings



### Expositions

