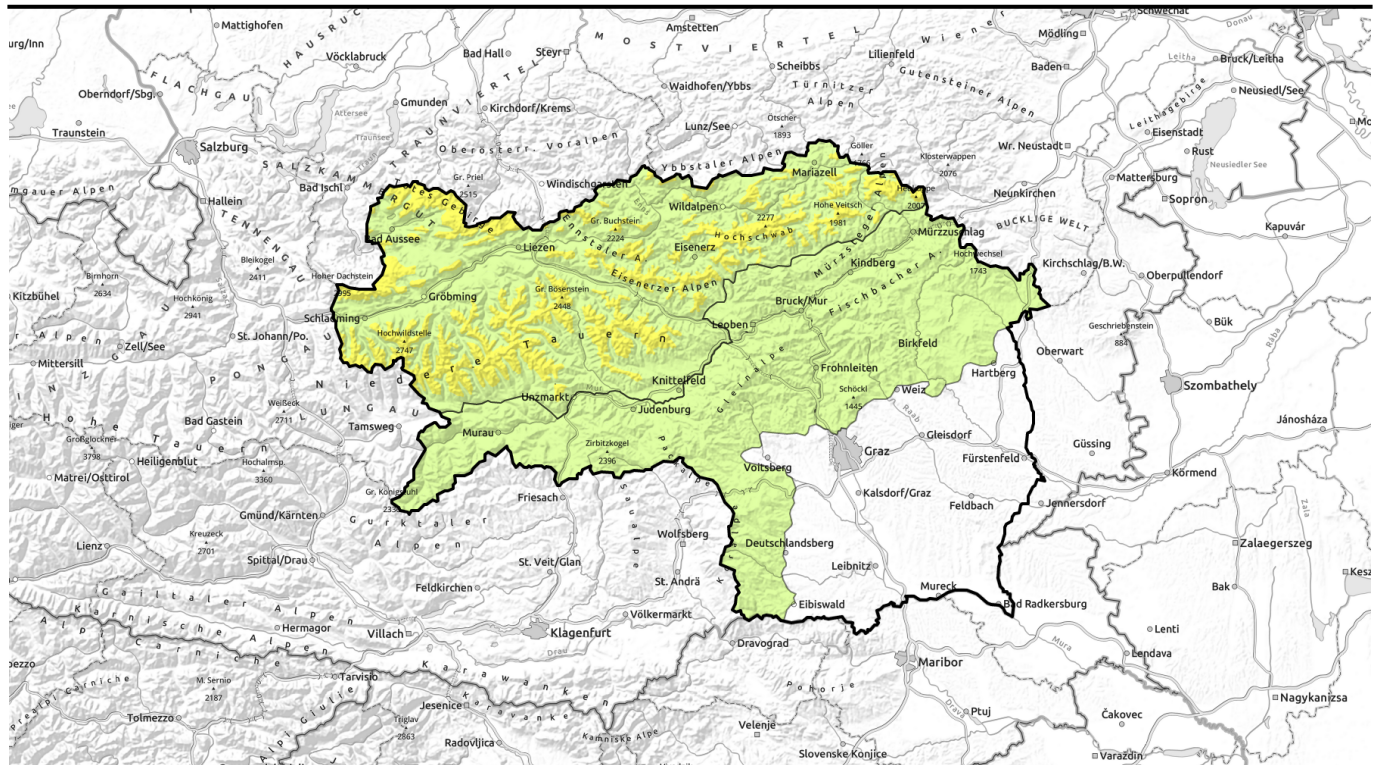



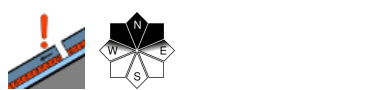


# Avalanche report for Sunday, 26.02.2023



## Moderate avalanche danger in northern regions of Styria due to fresh snowdrifts

	<p><b>2</b> timberline</p> <p>Totes Gebirge, Dachsteingebiet, Schladminger Tauern Nord, Nördliche Wölzer Tauern, Ennstaler Alpen, Rottenmanner Tauern, Schladminger Tauern Süd, Hochschwabgebiet, Mürtzsteger Alpen, Seckauer Tauern, Südliche Wölzer Tauern, Eisenerzer Alpen</p>	
	<p><b>1</b></p> <p>Östliche Fischbacher Alpen und Wechselgebiet, Mürtztaler Alpen, Westliche Fischbacher Alpen und Grazer Bergland, Stub- und Gleinalpe, Seetaler Alpen, Koralpe, Gurktaler Alpen</p>	

### Avalanche problems



### Danger ratings

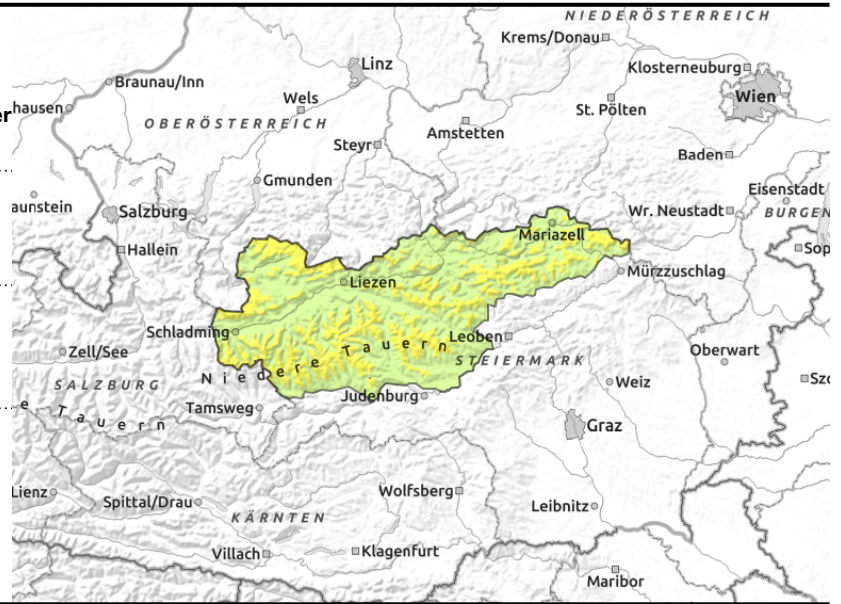
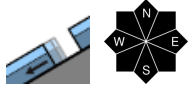
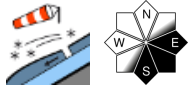


### Expositions



# Avalanche report for Sunday, 26.02.2023

**Totes Gebirge, Dachsteingebiet, Schladminger Tauern Nord, Nördliche Wölzer Tauern, Ennstaler Alpen, Rottenmanner Tauern, Schladminger Tauern Süd, Hochschwabgebiet, Mürzsteiger Alpen, Seckauer Tauern, Südliche Wölzer Tauern, Eisenerzer Alpen**



## Freshly generated snowdrift accumulations

Avalanche danger below the treeline is low, danger above the treeline is moderate. Fresh fallen snow and strong-to-stormy winds generated new snowdrift accumulations, danger zones are located especially on E/S facing steep slopes where even minimum additional loading can trigger medium-sized slab avalanches. Despite lower temperatures the glide-snow avalanche activity has not slowed, thus, still avoid zones below glide cracks.

## Snowpack structure

Due to dropping temperatures a melt-freeze crust has formed at lower and intermediate altitudes. Atop of it in the Northern Alps and Niedere Tauern, 10-20 cm of fresh snow has been deposited. Bonding of fresh snow to the warm melt-freeze crust below it is poor. Ground level layers are moist up to high altitudes.

At low altitudes the moist snowfall has bonded well with the moist old snowpack surface.

## Weather

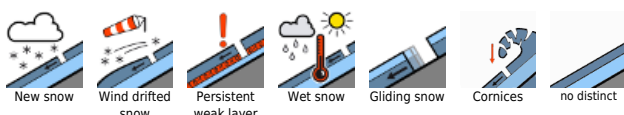
Sunday on the northern flank of the Alps will have overcast skies, high peaks will be veiled in clouds. In the morning minor snowfall is possible. Brisk NW winds will continue. South of the Niedere Tauern these will disperse the clouds and permit a bit of sunshine. It will be icy cold. At 2000 m: -14 degrees.

## Outlook

Monday: heavy clouds will shroud the summits, visibility will be severely reduced. In Upper Styria initially some snowfall, then easing. On the southern flank of the Alps it will be dry. Sunshine will be rare, clouds will remain dense. Icy cold. At 2000 m: -13 degrees. Winds will be moderate from the northeast.

No significant change is expected.

### Avalanche problems



### Danger ratings

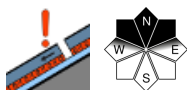


### Expositions



# Avalanche report for Sunday, 26.02.2023

Östliche Fischbacher Alpen und Wechselgebiet, Mürztaler Alpen, Westliche Fischbacher Alpen und Grazer Bergland, Stub- und Gleinalpe, Seetaler Alpen, Korralpe, Gurktaler Alpen



## Persistent weak layer - isolated danger zones

Avalanche danger is low. A few danger zones for slab releases are limited to high altitudes zones on extremely seteep shady slopes above 2000 m. Slab avalanches generally triggerable only by large additional loading.

### Snowpack structure

The snowpack was able to settle well, the layers are well bonded to one another. The lower temperatures have a good effect. On shady slopes there are hardened surfaces, many slopes are windblown. From last week's warmth the slopes are bare up to intermediate altitudes.

### Weather

Sunday will have overcast skies, winds will continue. South of the Niedere Tauern these will disperse the clouds and permit a bit of sunshine. It will be icy cold. At 2000 m: -14 degrees.

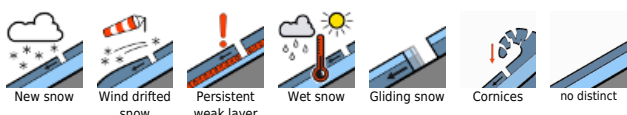
### Outlook

Monday: heavy clouds will shroud the summits, visibility will be severely reduced. In Upper Styria initially some snowfall, then easing. On the southern flank of the Alps it will be dry. Sunshine will be rare, clouds will remain dense. Icy cold. At 2000 m: -13 degrees. Winds will be moderate from the northeast.

No significant change is expected.

Translated by Jeffrey McCabe, [www.creativtrans.com](http://www.creativtrans.com)

#### Avalanche problems



#### Danger ratings



#### Expositions

