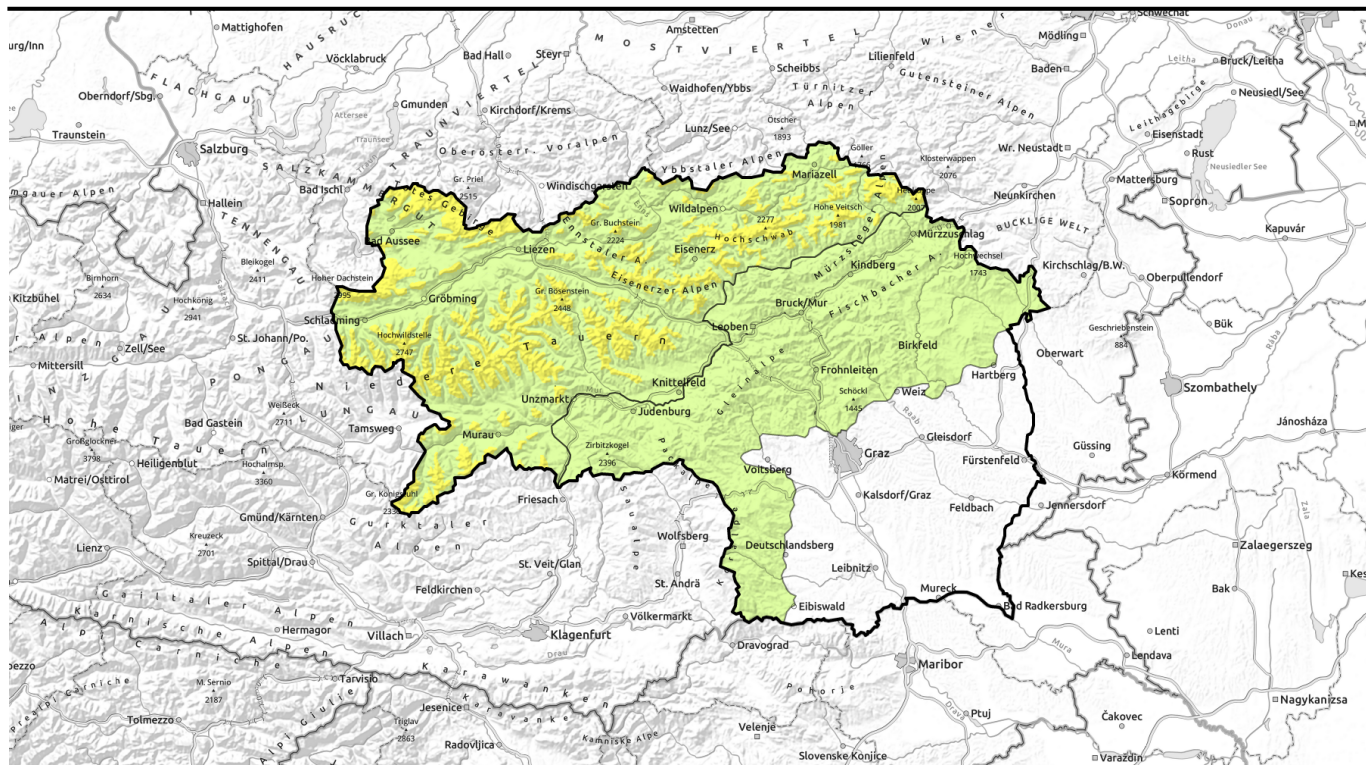


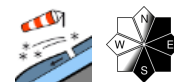
# Avalanche report for Saturday, 25.02.2023



## Increase in avalanche danger in the northern regions due to fresh snowdrift accumulations



2 timberline  
Totes Gebirge, Dachsteingebiet, Schladminger Tauern Nord, Nördliche Wölzer Tauern, Ennstaler Alpen, Rottenmanner Tauern, Schladminger Tauern Süd, Hochschwabgebiet, Mürtzsteger Alpen, Seckauer Tauern, Südliche Wölzer Tauern, Gurktaler Alpen, Eisenerzer Alpen



1  
Östliche Fischbacher Alpen und Wechselgebiet, Mürtztaler Alpen, Westliche Fischbacher Alpen und Grazer Bergland, Stub- und Glainalpe, Seetaler Alpen, Koralmpe



### Avalanche problems



### Danger ratings

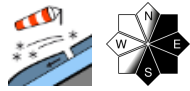


### Expositions



# Avalanche report for Saturday, 25.02.2023

Totes Gebirge, Dachsteingebiet, Schladminger Tauern Nord, Nördliche Wölzer Tauern, Ennstaler Alpen, Rottenmanner Tauern, Schladminger Tauern Süd, Hochschwabgebiet, Mürzsteger Alpen, Seckauer Tauern, Südliche Wölzer Tauern, Gurktaler Alpen, Eisenerzer Alpen



## Storm wind plus fresh fallen snow - new snowdrift accumulations

Following an extended phase of favourable conditions, avalanche danger below the treeline is low, moderate above that altitude. The reason: the latest snowfall combined with stormy winds. At high altitudes, fresh snowdrift accumulations are being generated, danger zones are found esp. on NE/S facing slopes. Despite the glide-snow avalanche activity, zones below glide cracks should be avoided - or quickly traversed.

### Snowpack structure

At low altitudes the moist fresh fallen snow will bond well with the old snowpack. At higher altitudes the fresh snow falling amid wind impact will be deposited atop melt-freeze encrusted surfaces. Bonding to the old snowpack is poor. A lubricating layer has formed at ground level which helps the whole snowpack to glide away and can fracture.

### Weather

On Friday night, a powerful cold front with rainfall/snowfall will reach the Eastern Alps. It will bring windy and cold winter weather. On Saturday snowfall along the northern flank of the Alps will be moderate, then ease over the course of the day. On the peaks of the northern flank of the Alps, winds will be stormy, even stronger in the rimline ranges. Temperatures will drop. At midday at 2000 m: -9 degrees; at 1500 m: -5 degrees.

On the southern flank of the Alps, conditions will be more pleasant, less cold and stormy, the winds will disperse the clouds increasingly.

Sunday will be cold and have some snow showers on the northern flank of the Alps. Low lying cloud will dominate there. In the south, frequent sunshine is expected.

### Outlook

No change.

#### Avalanche problems



#### Danger ratings

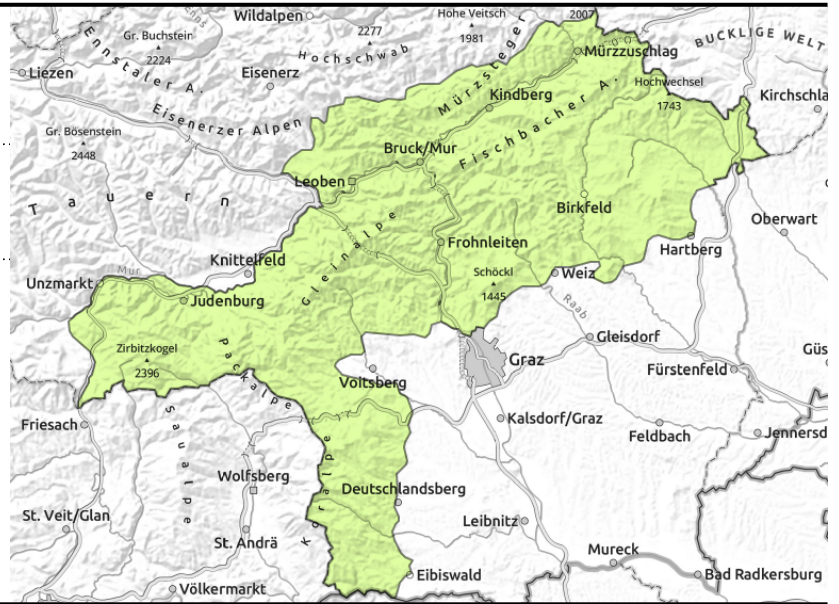
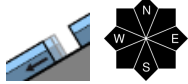


#### Expositions



# Avalanche report for **Saturday, 25.02.2023**

**Östliche Fischbacher Alpen und Wechselgebiet, Mürztaler Alpen, Westliche Fischbacher Alpen und Grazer Bergland, Stub- und Gleinalpe, Seetaler Alpen, Koralpe**



## Weather change: noticeably dropping temperatures. Fresh snow on northern flank of the Alps.

Avalanche danger is LOW, danger stems mostly from slopes which have not yet discharged. Thus, avoid zones below glide cracks or traverse them quickly. A few danger zones for slab avalanches exist at high altitudes on shady slopes (>2200m, esp. on NE/SE slopes) mostly triggerable by large additional loading. The fresh snowfall which is forecast will focus on the northern flank of the Alps, only isolated showers will extend over into the south.

### Snowpack structure

The snowpack was able to settle well, individual layers are well bonded to each other. The dropping temperatures will have a favourable effect on the snowpack. On shady slopes at high altitudes the surface is often hardened, many slopes are windblown. A lubricating layer has formed at ground level which helps the whole snowpack to glide away and can fracture.

### Weather

On Friday night, a powerful cold front with rainfall/snowfall will reach the Eastern Alps. It will bring windy and cold winter weather. On Saturday snowfall along the northern flank of the Alps will be moderate, then ease over the course of the day. On the peaks of the northern flank of the Alps, winds will be stormy, even stronger in the rimline ranges. Temperatures will drop. At midday at 2000 m: -9 degrees; at 1500 m: -5 degrees.

On the southern flank of the Alps, conditions will be more pleasant, less cold and stormy, the winds will disperse the clouds increasingly.

Sunday will be cold and have some snow showers on the northern flank of the Alps. Low lying cloud will dominate there. In the south, frequent sunshine is expected.

### Outlook

No change.

Translated by Jeffrey McCabe, [www.creativtrans.com](http://www.creativtrans.com)

#### Avalanche problems



#### Danger ratings



#### Expositions

