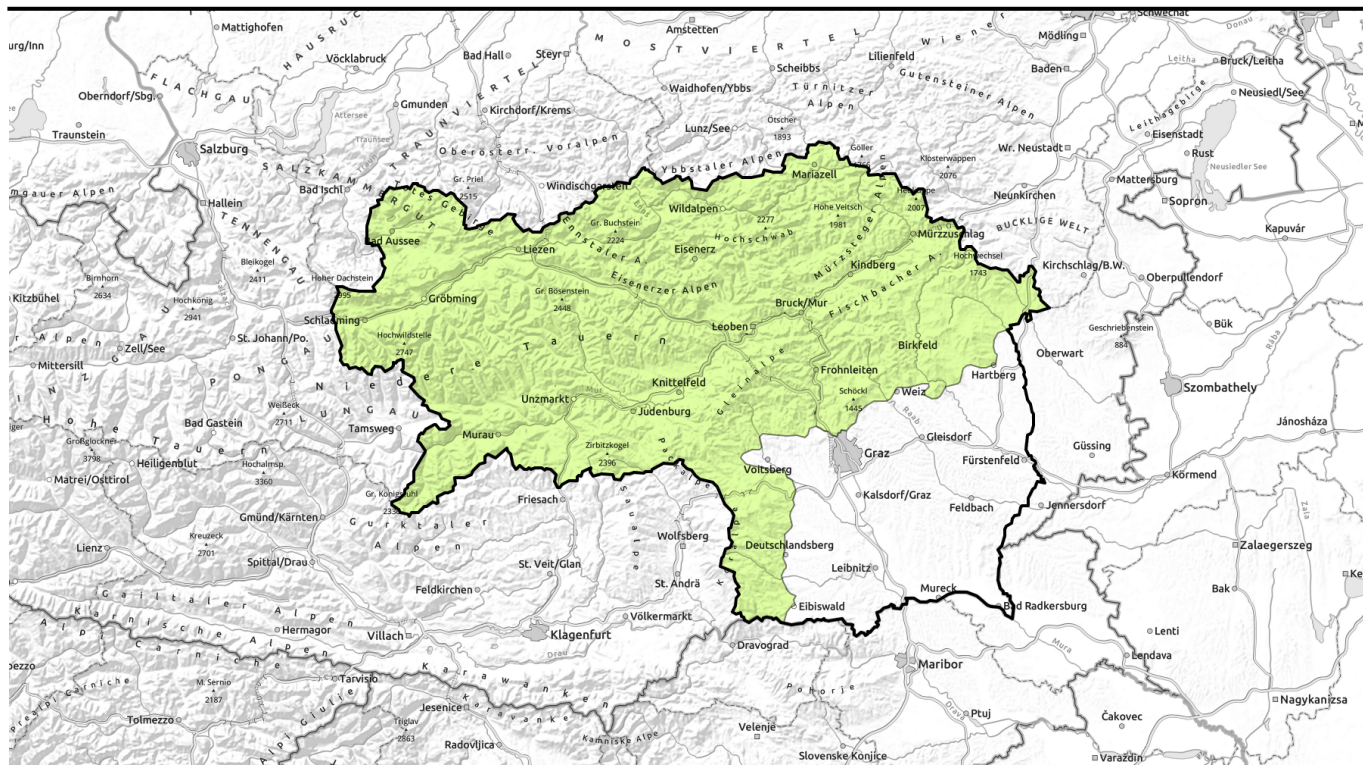


Avalanche report for Friday, 24.02.2023



Low avalanche danger. Favourable settling of snowpack. Avoid zones below glide cracks.



Schladminger Tauern Nord, Nördliche Wölzer Tauern, Rottenmanner Tauern, Ennstaler Alpen, Hochschwabgebiet, Mürzteger Alpen, Mürztaler Alpen, Eisenerzer Alpen, Seckauer Tauern, Südliche Wölzer Tauern, Schladminger Tauern Süd, Gurktaler Alpen, Seetaler Alpen, Stub- und Gleinalpe, Westliche Fischbacher Alpen und Grazer Bergland, Östliche Fischbacher Alpen und Wechselgebiet, Koralpe, Totes Gebirge, Dachsteingebiet



Avalanche problems



Danger ratings

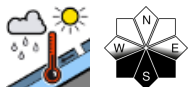
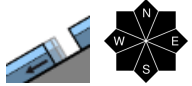


Expositions



Avalanche report for Friday, 24.02.2023

Schladminger Tauern Nord, Nördliche Wölzer Tauern, Rottenmanner Tauern, Ennstaler Alpen, Hochschwabgebiet, Mürtzsteger Alpen, Mürtztaler Alpen, Eisenerzer Alpen, Seckauer Tauern, Südliche Wölzer Tauern, Schladminger Tauern Süd, Gurktaler Alpen, Seetaler Alpen, Stub- und Gleinalpe, Westliche Fischbacher Alpen und Grazer Bergland, Östliche Fischbacher Alpen und Wechselgebiet, Koralpe, Totes Gebirge, Dachsteingebiet



Low avalanche danger. Favourably settled snowpack. Few danger zones.

Avalanche danger has receded, is LOW over widespread areas. Dangers at most to be found where no glide-snow avalanches have yet discharged. Zones below glide cracks should be circumvented or traversed quickly. On sunny slopes in very isolated cases, small loose-snow avalanches could release in rocky terrain. A few danger zones for slab releases, but only on shady steep (>2200m) slopes at high altitudes, esp. NE/SE facing, by large additional loading.

Snowpack structure

Through the daily shift from colder to milder phases the snowpack has been able to settle well, the layers are well bonded with each other. On sunny slopes the surface is often soft, at low altitudes without a fundament or simply melted. On shady high altitude slopes, hardened surfaces, many slopes are windblown. A lubricating layer with water is found at ground level, on steep smooth slopes the snowpack can glide away.

Weather

Before a cold front approaches, weather in Styria will still be sunny on Friday. Only as of afternoon will heavy clouds move in from the northwest, above 1400 m light snowfall will set in. Strong SW to W winds will be blowing. At 2000 m: 0 degrees; at 1500 m +5 degrees.

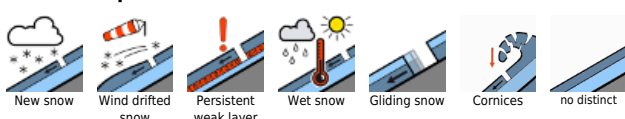
On Friday night, stormy winds will shift to northwesterly and precipitation will intensify on the northern flank of the Alps. Temperatures will descend rapidly, so that snowfall will reach the valley floor. Between Dachstein and Totes Gebirge, up to 30 cm of fresh snow is expected, further east much less. Isolated showers will reach the southern flank of the Alps, but only in weakened form. The following days will remain at temperatures of -14 degrees at 2000 m - unusually cold.

Outlook

Due to fresh snowdrift accumulations, avalanche danger will increase at high altitudes in the Northern Alps and northern flank of the Tauern.

Translated by Jeffrey McCabe, www.creativtrans.com

Avalanche problems



Danger ratings



Expositions

