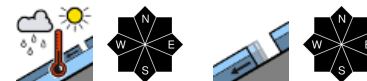


Increasingly frequent loose and glide-snow avalanche activity. Fresh drifts at high altitudes on the northern flank of the Alps.



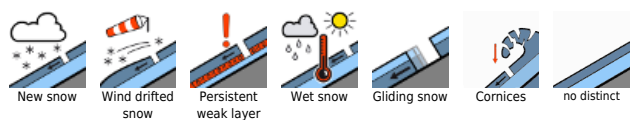
Totes Gebirge, Dachsteingebiet, Schladminger Tauern Nord, Nördliche Wölzer Tauern, Rottenmanner Tauern, Ennstaler Alpen, Hochschwabgebiet, Mürtzsteiger Alpen, Eisenerzer Alpen, Südliche Wölzer Tauern, Schladminger Tauern Süd, Gurktaler Alpen



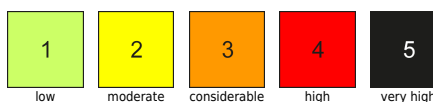
Mürtztaler Alpen, Seckauer Tauern, Seetaler Alpen, Stub- und Glainalpe, Westliche Fischbacher Alpen und Grazer Bergland, Östliche Fischbacher Alpen und Wechselgebiet, Koralpe



Avalanche problems

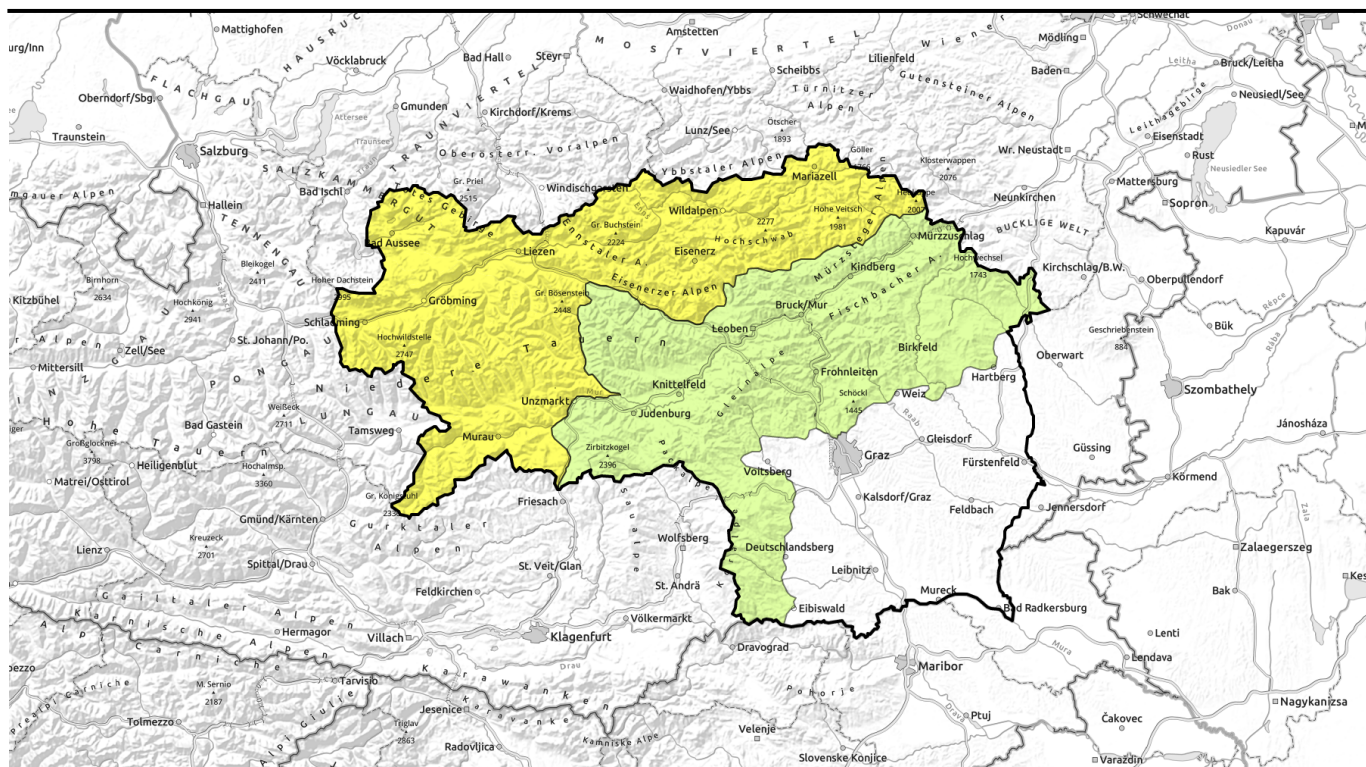


Danger ratings



Expositions





Vermehrte Locker- und Gleitschneelawinen-Aktivität! In alpennordseitigen Hochlagen frischer Triebsschnee!



Totes Gebirge, Dachsteingebiet, Schladminger Tauern Nord, Nördliche Wölzer Tauern, Rottenmanner Tauern, Ennstaler Alpen, Hochschwabgebiet, Mürzteger Alpen, Eisenerzer Alpen, Südliche Wölzer Tauern, Schladminger Tauern Süd, Gurktaler Alpen



Mürztaler Alpen, Seckauer Tauern, Seetaler Alpen, Stub- und Gleinalpe, Westliche Fischbacher Alpen und Grazer Bergland, Östliche Fischbacher Alpen und Wechselgebiet, Korralpe



Avalanche problems



Danger ratings

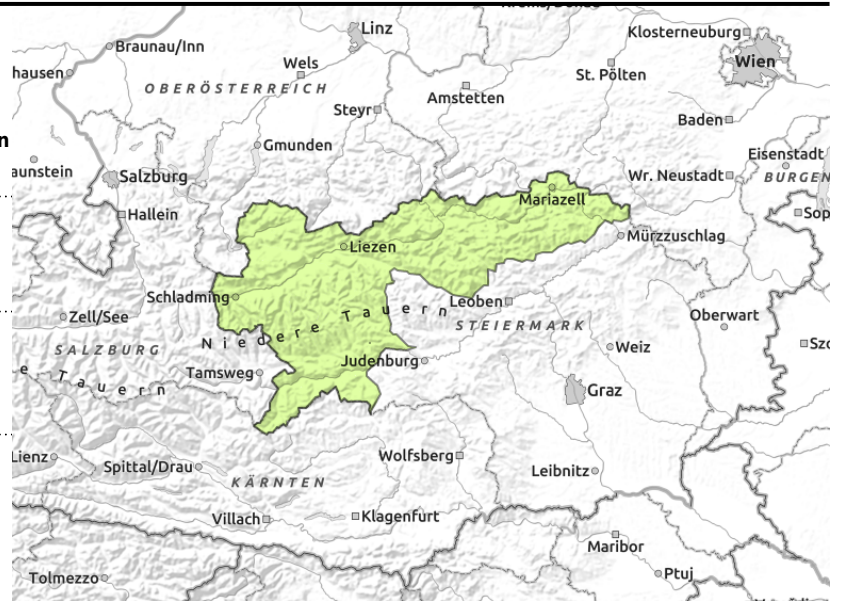
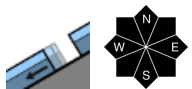


Expositions



Avalanche report for Monday, 20.02.2023, morning

Totes Gebirge, Dachsteingebiet, Schladminger Tauern Nord, Nördliche Wölzer Tauern, Rottenmanner Tauern, Ennstaler Alpen, Hochschwabgebiet, Mürzsteger Alpen, Eisenerzer Alpen, Südliche Wölzer Tauern, Schladminger Tauern Süd, Gurktaler Alpen



Daytime cycle of glide-snow and wet-snow avalanches, some fresh snowdrift accumulations at high altitudes.

Avalanche danger is low in the morning, moderate starting at midday. Due to rainfall, the risk of naturally triggered glide-snow avalanches has increased on steep smooth grass-covered slopes, these can trigger at any time of day or night. Avoid zones below glide cracks. Combined with solar radiation, the steep slopes which have not yet discharged can trigger wet loose-snow slides. On very steep E/S facing slopes at high altitudes, isolated slabs cannot be ruled out (large additional loading).

Snowpack structure

Precipitation was initially rainfall on the weekend, destabilizing the snowpack somewhat. Atop the moist surface, fresh snow was later deposited, accompanied by stormy winds which generated fresh shallow drifts, initially well bonded with the old snowpack. Weak layers still exist deeper down in the snowpack: faceted crystals bordering on older melt-freeze crusts. Also inside the thoroughly wet snowpack is a layer of depth hoar in the transition to the ground which is responsible for widespread glide-snow activity.

Weather

The brisk NW air current is weakening. On Monday, still moist air masses in Upper Styria. A high-pressure front will slowly gain the upper hand during the day. In the Northern Alps and on the northern flank of Niedere Tauern, the perturbation will persist with lots of cloud and fog, light snowfall above 1000 m. Further south the clouds will swiftly disperse, sunshine can then be expected. Starting at midday, more pleasant conditions also in the northern regions. Winds will remain stormy, particularly in the rimline ranges. At 2000 m: +1 degree; at 1500 m: +3 degrees. On Tuesday, sunny weather everywhere with very few clouds, a touch milder, and the winds will be lighter. Only from Hochschwab and eastwards will it remain stormy.

Outlook

No change is expected. Caution: daytime danger cycle.

Avalanche problems



Danger ratings

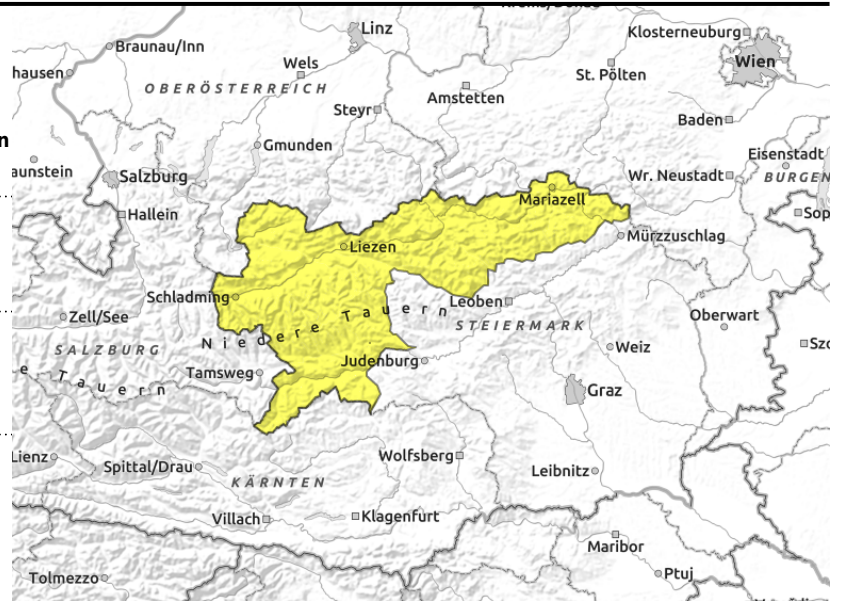
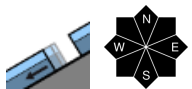
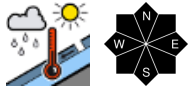


Expositions



Avalanche report for Monday, 20.02.2023, afternoon

Totes Gebirge, Dachsteingebiet, Schladminger Tauern Nord, Nördliche Wölzer Tauern, Rottenmanner Tauern, Ennstaler Alpen, Hochschwabgebiet, Mürzsteger Alpen, Eisenerzer Alpen, Südliche Wölzer Tauern, Schladminger Tauern Süd, Gurktaler Alpen



Daytime cycle of glide-snow and wet-snow avalanches, some fresh snowdrift accumulations at high altitudes.

Avalanche danger is low in the morning, moderate starting at midday. Due to rainfall, the risk of naturally triggered glide-snow avalanches has increased on steep smooth grass-covered slopes, these can trigger at any time of day or night. Avoid zones below glide cracks. Combined with solar radiation, the steep slopes which have not yet discharged can trigger wet loose-snow slides. On very steep E/S facing slopes at high altitudes, isolated slabs cannot be ruled out (large additional loading).

Snowpack structure

Precipitation was initially rainfall on the weekend, destabilizing the snowpack somewhat. Atop the moist surface, fresh snow was later deposited, accompanied by stormy winds which generated fresh shallow drifts, initially well bonded with the old snowpack. Weak layers still exist deeper down in the snowpack: faceted crystals bordering on older melt-freeze crusts. Also inside the thoroughly wet snowpack is a layer of depth hoar in the transition to the ground which is responsible for widespread glide-snow activity.

Weather

The brisk NW air current is weakening. On Monday, still moist air masses in Upper Styria. A high-pressure front will slowly gain the upper hand during the day. In the Northern Alps and on the northern flank of Niedere Tauern, the perturbation will persist with lots of cloud and fog, light snowfall above 1000 m. Further south the clouds will swiftly disperse, sunshine can then be expected. Starting at midday, more pleasant conditions also in the northern regions. Winds will remain stormy, particularly in the rimline ranges. At 2000 m: +1 degree; at 1500 m: +3 degrees.

On Tuesday, sunny weather everywhere with very few clouds, a touch milder, and the winds will be lighter. Only from Hochschwab and eastwards will it remain stormy.

Outlook

No change is expected. Caution: daytime danger cycle.

Avalanche problems



Danger ratings

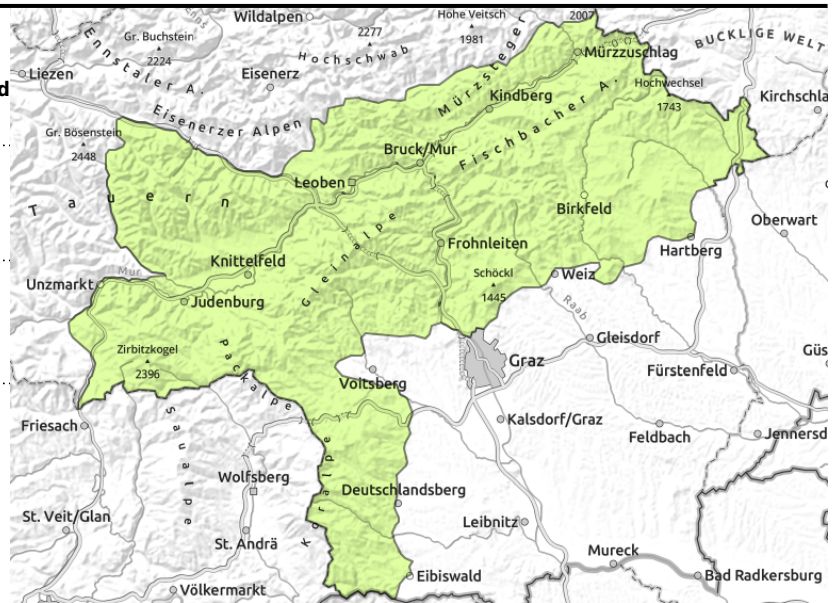
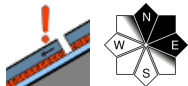
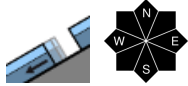


Expositions



Avalanche report for Monday, 20.02.2023

Mürztaler Alpen, Seckauer Tauern, Seetaler Alpen, Stub- und Gleinalpe, Westliche Fischbacher Alpen und Grazer Bergland, Östliche Fischbacher Alpen und Wechselgebiet, Koralpe



Low avalanche danger. Southern regions have better weather.

Avalanche danger in Styria is low. At intermediate and low altitudes the danger of naturally triggered glide-snow avalanches on steep smooth grassy slopes still threatens. These can trigger at any time of day or night, zones below glide cracks should be avoided. Due to diffuse solar radiation, increasingly frequent wet loose-snow avalanches can trigger from steep zones which have not yet discharged. On very setep N/E facing slopes at high altitude, in addition, isolated slab avalanches cannot be ruled out by large additional loading (persistent weak layer).

Snowpack structure

The snowpack has settled well, is mostly stable. On higher-altitude shady slopes the snowpack is mostly dry, moist lower down, in places it is already isotherm. Depending on wind impact and solar radiation, the surface is melt-freeze encrusted or hardened, a loose layer exists only on shady wind-protected slopes. Trigger-sensitive weak layers exist more deeply embedded inside the snowpack in the form of faceted crystals around older melt-freeze crusts. In addition, when the snowpack is thoroughly wet there is a wet sliding layer in the transitions to the ground which is responsible for glide-snow avalanches.

Weather

The brisk NW air current is weakening. On Monday, still moist air masses in Upper Styria. A high-pressure front will slowly gain the upper hand during the day. In the Northern Alps and on the northern flank of Niedere Tauern, the perturbation will persist with lots of cloud and fog, light snowfall above 1000 m. Further south the clouds will swiftly disperse, sunshine can then be expected. Starting at midday, more pleasant conditions also in the northern regions. Winds will remain stormy, particularly in the rimline ranges. At 2000 m: +1 degree; at 1500 m: +3 degrees.

On Tuesday, sunny weather everywhere with very few clouds, a touch milder, and the winds will be lighter. Only from Hochschwab and eastwards will it remain stormy.

Outlook

No change is expected. Caution: daytime danger cycle.

Translated by Jeffrey McCabe, www.creativtrans.com

Avalanche problems



Danger ratings



Expositions

