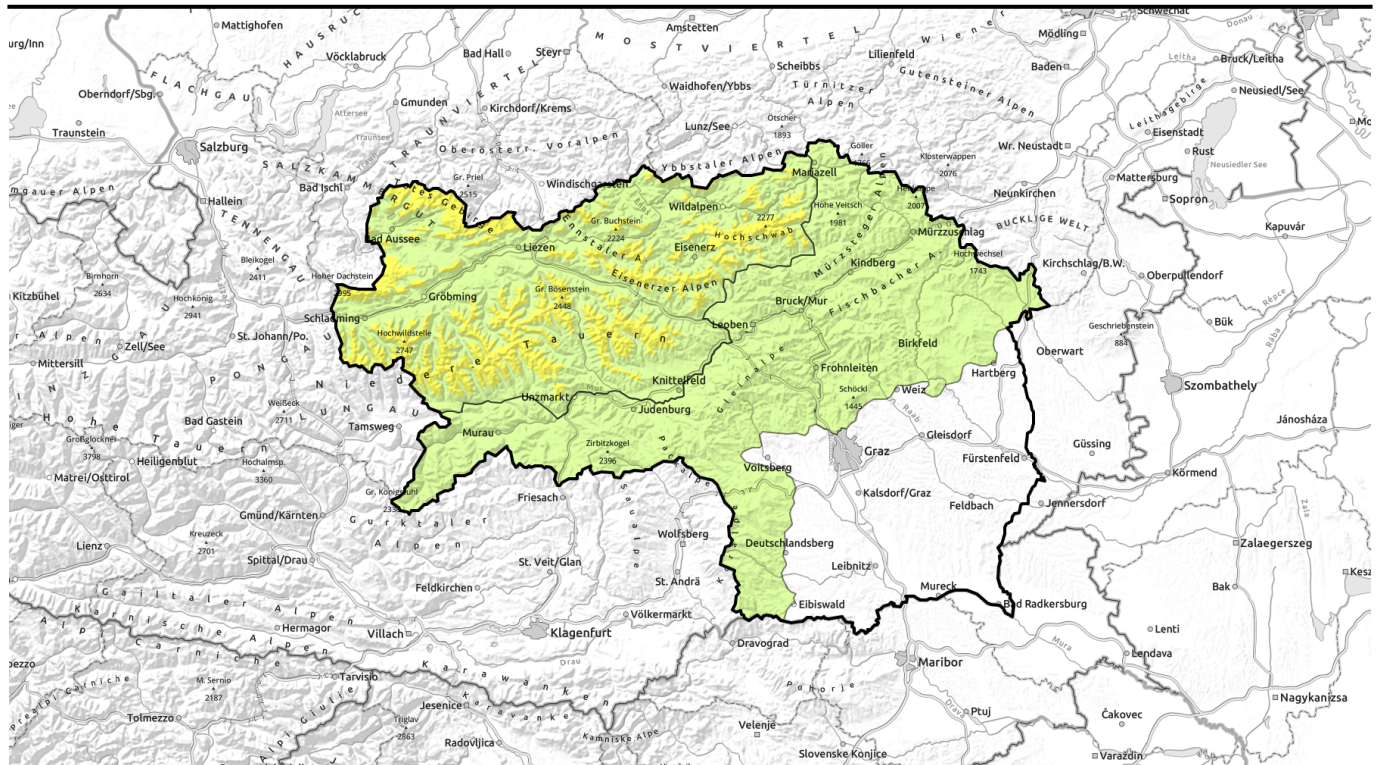



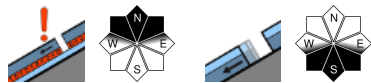


# Avalanche report for Monday, 13.02.2023



## Due to higher temperatures, danger of naturally triggered avalanches increases

	<p><b>2</b> timberline Schladminger Tauern Süd, Schladminger Tauern Nord, Dachsteingebiet, Totes Gebirge, Nördliche Wölzer Tauern, Südliche Wölzer Tauern, Seckauer Tauern, Eisenerzer Alpen, Rottenmanner Tauern, Ennstaler Alpen, Hochschwabgebiet</p>	
	<p><b>1</b> Gurktaler Alpen, Seetaler Alpen, Stub- und Gleinalpe, Koralpe, Westliche Fischbacher Alpen und Grazer Bergland, Östliche Fischbacher Alpen und Wechselgebiet, Mürtzsteger Alpen, Mürtztaler Alpen</p>	

### Avalanche problems



### Danger ratings

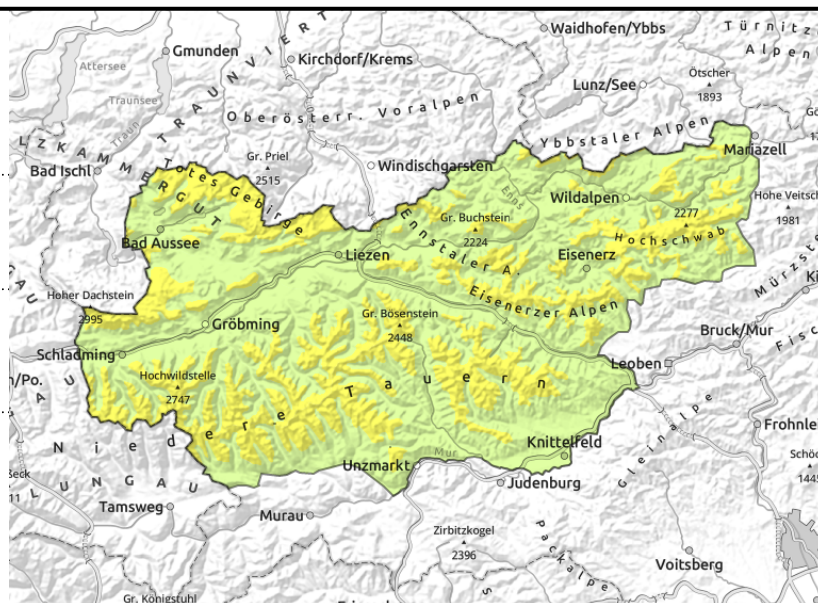
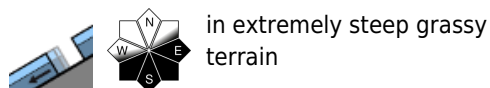


### Expositions



# Avalanche report for Monday, 13.02.2023

Schladminger Tauern Süd, Schladminger Tauern Nord, Dachsteingebiet, Totes Gebirge, Nördliche Wölzer Tauern, Südliche Wölzer Tauern, Seckauer Tauern, Eisenerzer Alpen, Rottenmanner Tauern, Ennstaler Alpen, Hochschwabgebiet



## Few trigger-sensitive spots in backcountry touring terrain

Avalanche danger above the treeline is moderate. Danger zones occur mostly on N-facing slopes, where older drifts can be triggered by minimum additional loading. Drifts should not be underestimated. Due to higher temperatures, glide-snow avalanches can trigger at intermediate altitudes.

### Snowpack structure

A bit of fresh snow has blanketed the old snowpack. Older snowdrifts lie deposited on shady slopes atop a layer of surface hoar. Near ridgelines a melt-freeze crust has formed. The fundament near ground level is riddled with expansively metamorphosed (faceted) crystals and is weakened.

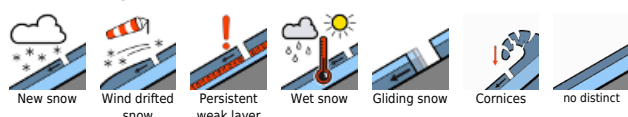
### Weather

With increasing influence of a high-pressure front, Monday will bring us outstanding weather. Mostly sunshine, often cloudless skies. Winds light-to-moderate. Temperature at 2000 m: +2 degrees. Tuesday: a very sunny day, mostly cloudless skies, only light winds. At 2000 m: +5 degrees.

### Outlook

No change in avalanche danger levels is expected. The danger of wet-snow avalanches will rise in rough and rocky terrain.

#### Avalanche problems



#### Danger ratings



#### Expositions



# Avalanche report for Monday, 13.02.2023

Gurktaler Alpen, Seetaler Alpen, Stub- und Gleinalpe, Korralpe, Westliche Fischbacher Alpen und Grazer Bergland, Östliche Fischbacher Alpen und Wechselgebiet, Mürzsteger Alpen, Mürztaler Alpen



in few spots in open terrain



in extremely steep grassy terrain

## Few danger spots - caution urged on north-facing slopes

Avalanche danger is low. Avalanche prone locations occur on N-facing slopes more than anywhere else. Older snowdrift accumulations can be triggered even by large additional loading. Isolated naturally triggered avalanches are possible on sunny slopes.

### Snowpack structure

The snowpack is quite stable. There are layers of faceted crystals more deeply embedded inside the snowpack which weaken the entire snow cover. On sunny slopes, a melt-freeze crust has formed on very steep slopes.

### Weather

With increasing influence of a high-pressure front, Monday will bring us outstanding weather. Mostly sunshine, often cloudless skies. Winds light-to-moderate. Temperature at 2000 m: +2 degrees. Tuesday: a very sunny day, mostly cloudless skies, only light winds. At 2000 m: +5 degrees.

### Outlook

No change in avalanche danger levels is expected. The danger of wet-snow avalanches will rise in rough and rocky terrain.

Translated by Jeffrey McCabe, [www.creativtrans.com](http://www.creativtrans.com)

#### Avalanche problems



#### Danger ratings



#### Expositions

