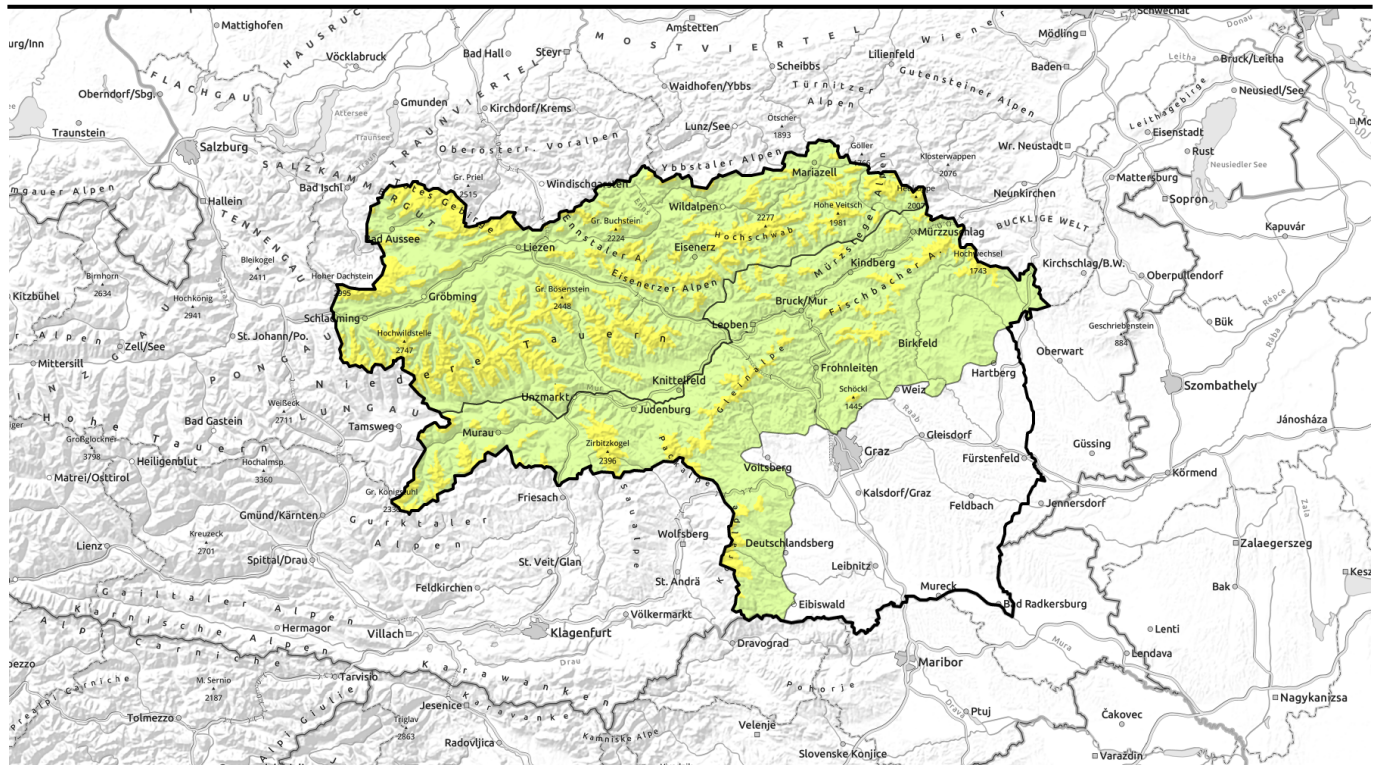



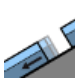




Avalanche report for Sunday, 12.02.2023





Fresh snow blankets older snowdrift accumulations

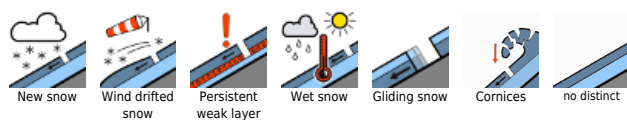
 timberline Schladming Tauern Süd, Schladming Tauern Nord, Dachsteingebiet, Totes Gebirge, Nördliche Wölzer Tauern, Südliche Wölzer Tauern, Seckauer Tauern, Eisenerzer Alpen, Rottenmanner Tauern, Ennstaler Alpen, Hochschwabgebiet, Mürtzsteiger Alpen

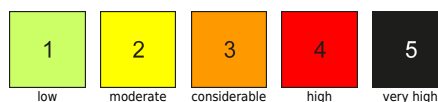
 timberline Gurktaler Alpen, Seetaler Alpen, Stub- und Gleinalpe, Koralpe, Westliche Fischbacher Alpen und Grazer Bergland, Östliche Fischbacher Alpen und Wechselgebiet, Mürtztaler Alpen

Avalanche problems



Danger ratings

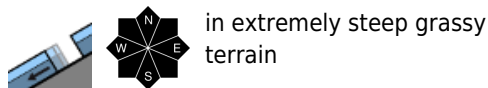
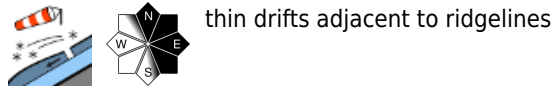
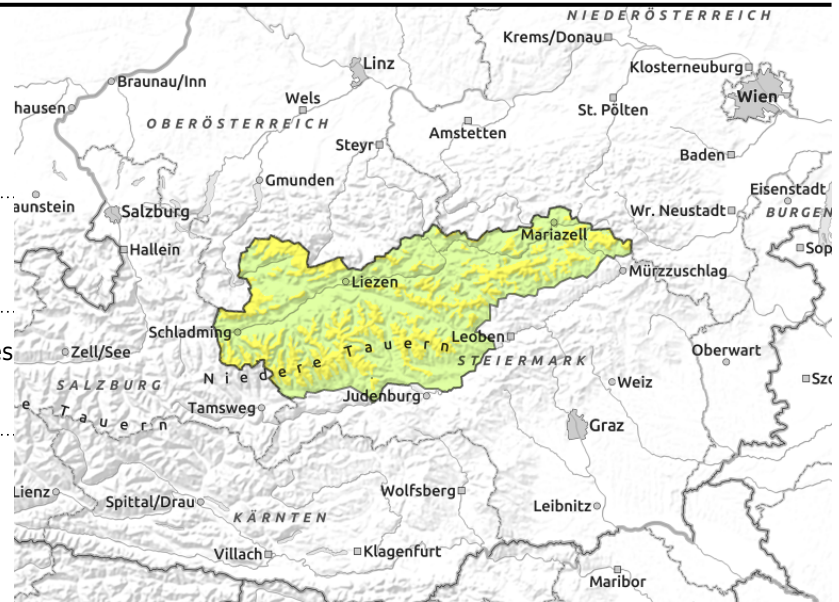


Expositions



Avalanche report for Sunday, 12.02.2023

Schladminger Tauern Süd, Schladminger Tauern Nord, Dachsteingebiet, Totes Gebirge, Nördliche Wölzer Tauern, Südliche Wölzer Tauern, Seckauer Tauern, Eisenerzer Alpen, Rottenmanner Tauern, Ennstaler Alpen, Hochschwabgebiet, Mürzsteger Alpen



Snowdrift accumulations on north-facing slopes. Some fresh snow.

Avalanche danger above the treeline is moderate. Danger zones occur mostly on N-facing slopes, where older drifts can be triggered by minimum additional loading. Drifts should not be underestimated. Due to higher temperatures, glide-snow avalanches can trigger at intermediate altitudes.

Snowpack structure

Older snowdrifts lie deposited on shady slopes atop a layer of surface hoar. Near ridgelines a melt-freeze crust has formed. The fundament near ground level is riddled with expansively metamorphosed (faceted) crystals and is weakened. The forecast fresh snow (5 cm) is not relevant to avalanche danger but it will blanket the currently easily recognized signs of wind.

Weather

Instable weather on Sunday, the summits often in fog, north of the Main Alpine Ridge minor snowfall. Further south it will remain largely dry, but brisk to strong NW winds will be blowing. At 2000 m: -5 degrees; NW winds at 30-70 km/hr.

Increasing high-pressure front conditions on Monday: excellent weather. Sunshine will predominate, skies will often be cloudless. Winds at light to moderate strength. At 2000 m: +2 degrees.

Outlook

Wet loose-snow avalanches and glide-snow avalanches can trigger naturally on Monday.

Avalanche problems



Danger ratings



Expositions



Avalanche report for Sunday, 12.02.2023

Gurktaler Alpen, Seetaler Alpen, Stub- und Gleinalpe, Korralpe, Westliche Fischbacher Alpen und Grazer Bergland, Östliche Fischbacher Alpen und Wechselgebiet, Mürztaler Alpen



Snowdrift accumulations on east-facing slopes

Avalanche danger above the treeline is moderate. Avalanche prone locations occur on N/NE facing slopes more than anywhere else. Fresh snowdrift accumulations have been generated, can be triggered even by the weight of one single person. Special caution is urged at entry points into gullies and bowls (shallow to deep snow).

Snowpack structure

The huge amounts of snowdrifted masses from the last few days have been able to settle. More deeply embedded inside the snowpack are layers of faceted crystals and melt-freeze crusts which weaken the entire snowpack. On steep south-facing slopes a melt-freeze crust has formed. Fresh snowdrifts from NW winds lie deposited on east-facing slopes atop surface hoar.

Weather

Instable weather on Sunday, the summits often in fog, north of the Main Alpine Ridge minor snowfall. Further south it will remain largely dry, but brisk to strong NW winds will be blowing. At 2000 m: -5 degrees; NW winds at 30-70 km/hr.

Increasing high-pressure front conditions on Monday: excellent weather. Sunshine will predominate, skies will often be cloudless. Winds at light to moderate strength. At 2000 m: +2 degrees.

Outlook

Avalanche danger levels will diminish.

Translated by Jeffrey McCabe, www.creativtrans.com

Avalanche problems



Danger ratings



Expositions

