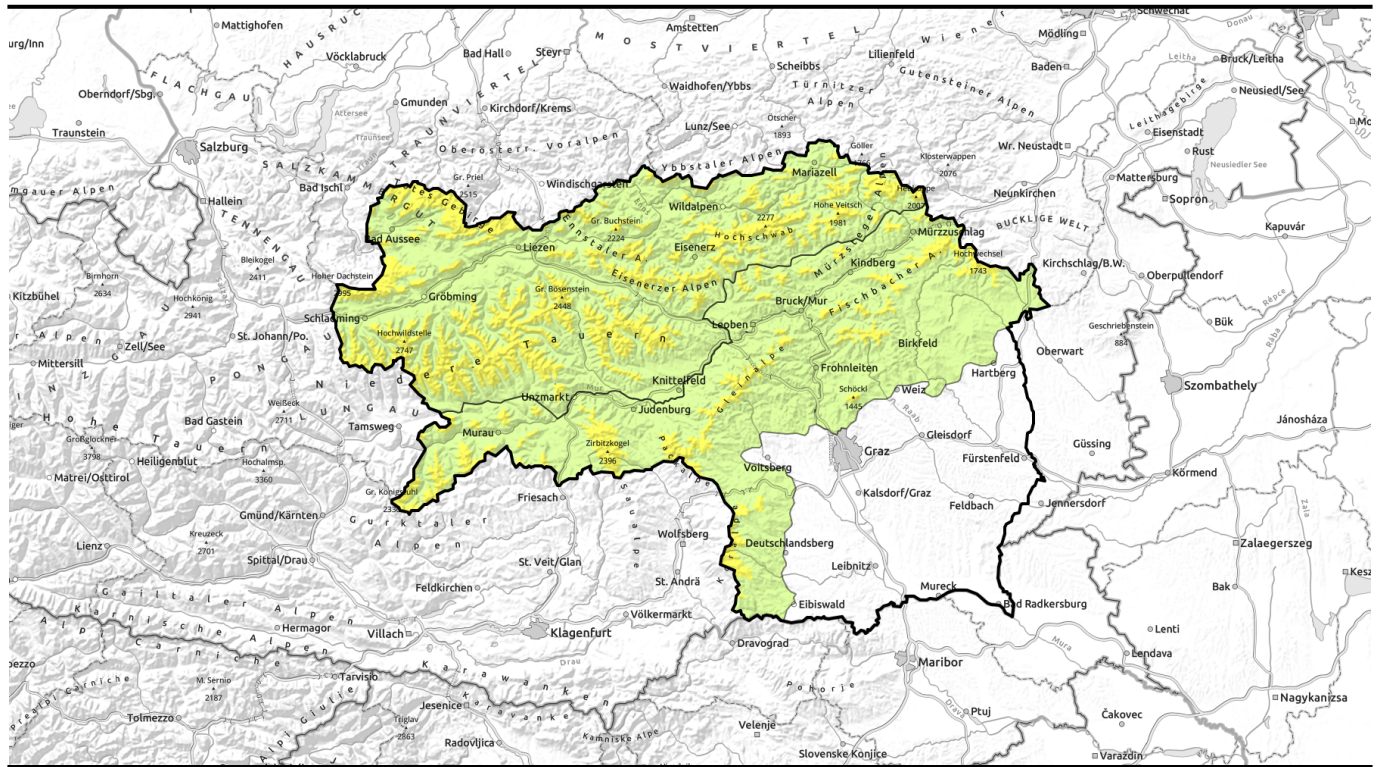






Avalanche report for Saturday, 11.02.2023



Caution: fresh snowdrift accumulations on east and north-facing slopes

- | | | |
|---|---|---|
|  <p>timberline</p> | <p>Schladminger Tauern Süd, Schladminger Tauern Nord, Dachsteingebiet, Totes Gebirge, Nördliche Wölzer Tauern, Südliche Wölzer Tauern, Seckauer Tauern, Eisenerzer Alpen, Rottenmanner Tauern, Ennstaler Alpen, Hochschwabgebiet, Mürztager Alpen</p> |  |
|  <p>timberline</p> | <p>Gurktaler Alpen, Seetaler Alpen, Stub- und Gleinalpe, Korralpe, Westliche Fischbacher Alpen und Grazer Bergland, Östliche Fischbacher Alpen und Wechselgebiet, Mürztaler Alpen</p> |  |

Avalanche problems



Danger ratings

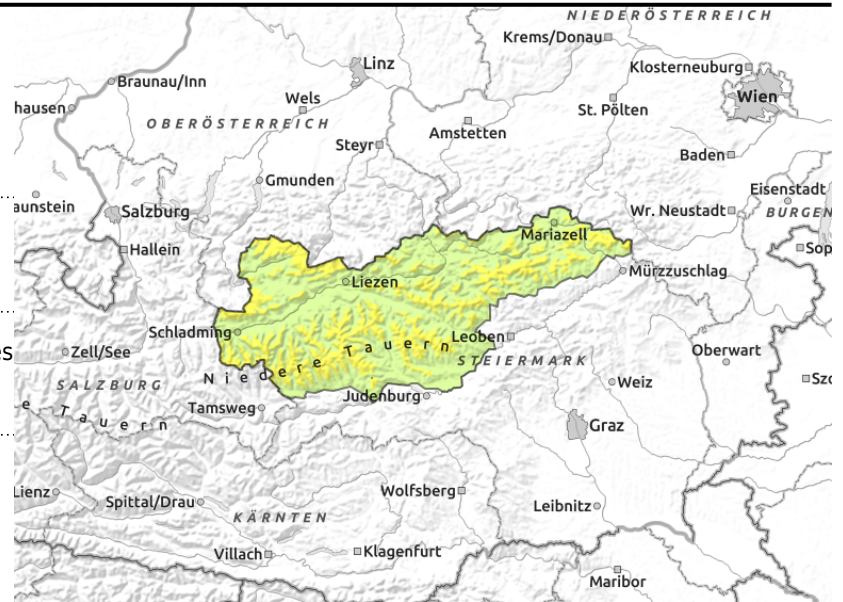
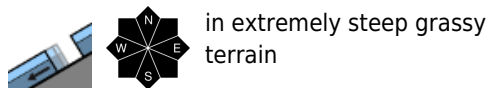
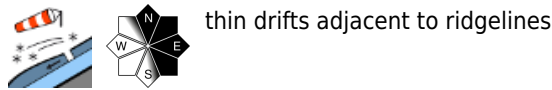


Expositions



Avalanche report for Saturday, 11.02.2023

Schladminger Tauern Süd, Schladminger Tauern Nord, Dachsteingebiet, Totes Gebirge, Nördliche Wölzer Tauern, Südliche Wölzer Tauern, Seckauer Tauern, Eisenerzer Alpen, Rottenmanner Tauern, Ennstaler Alpen, Hochschwabgebiet, Mürzsteiger Alpen



Snowdrift accumulations on east and north-facing slopes.

Avalanche danger above the treeline is moderate. Danger zones occur mostly on E/N facing slopes, where fresh drifts have accumulated on Thursday and Friday in those aspects and can be triggered by minimum additional loading. Special caution is urged near ridgelines at the entry points into gullies and bowls (transition from shallow to deep snow). Drifts should not be underestimated.

Due to higher temperatures, glide-snow avalanches can trigger at intermediate altitudes. Also medium-sized naturally triggered slab avalanches in steep rough and rocky terrain are possible on Saturday.

Snowpack structure

The S/W winds will transport the snow to N/E aspects. Winds shifted on Thursday and Friday, so new snowdrift accumulations are being deposited in gullies, bowls and behind abrupt discontinuities in the terrain. Caution: the drifts lie atop a layer of surface hoar. Near ridgelines a melt-freeze crust has formed. The fundament is weakened by expansively metamorphosed crystals.

Weather

On Saturday the warmth will be palpable. Summits will sometimes be shrouded in heavy cloud, occasional unhampered sunshine. Rainfall or snowfall is not expected before evening. Winds will be brisk to strong from the northwest, moderate in the rimline ranges. At 2000 m: -2 degrees at midday on the Dachstein, +1 degree on Koralpe.

Outlook

Instable weather on Sunday, the summits often veiled in fog, north of the Main Alpine Ridge some light snowfall. Further south it will remain largely dry, but with brisk to strong NW winds reaching speeds over 60 km/hr.

Avalanche problems



Danger ratings

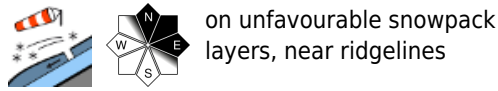


Expositions



Avalanche report for Saturday, 11.02.2023

Gurktaler Alpen, Seetaler Alpen, Stub- und Gleinalpe, Koralpe, Westliche Fischbacher Alpen und Grazer Bergland, Östliche Fischbacher Alpen und Wechselgebiet, Mürztaler Alpen



Snowdrift accumulations on east and north-facing slopes

Avalanche danger above the treeline is moderate. Avalanche prone locations occur on NW/N/NE facing slopes more than anywhere else. Fresh snowdrift accumulations have been generated, can be triggered even by the weight of one single person. Special caution is urged at entry points into gullies and bowls (shallow to deep snow).

Snowpack structure

The huge amounts of snowdrifted masses from the last few days have been able to settle. More deeply embedded inside the snowpack are layers of faceted crystals and melt-freeze crusts which weaken the entire snowpack. On steep south-facing slopes a melt-freeze crust has formed. On Wednesday afternoon, southerly winds transported the snow to northwest-facing slopes. On Friday, strong westerly winds loaded east-facing slopes with drifts. The drifts are deposited atop a layer with surface hoar. Bonding between fresh drifts and the old snowpack is insufficient.

Weather

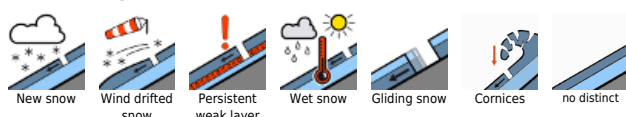
On Saturday the warmth will be palpable. Summits will sometimes be shrouded in heavy cloud, occasional unhampered sunshine. Rainfall or snowfall is not expected before evening. Winds will be brisk to strong from the northwest, moderate in the rimline ranges. At 2000 m: -2 degrees at midday on the Dachstein, +1 degree on Koralpe.

Outlook

Instable weather on Sunday, the summits often veiled in fog, north of the Main Alpine Ridge some light snowfall. Further south it will remain largely dry, but with brisk to strong NW winds reaching speeds over 60 km/hr.

Translated by Jeffrey McCabe, www.creativtrans.com

Avalanche problems



Danger ratings



Expositions

