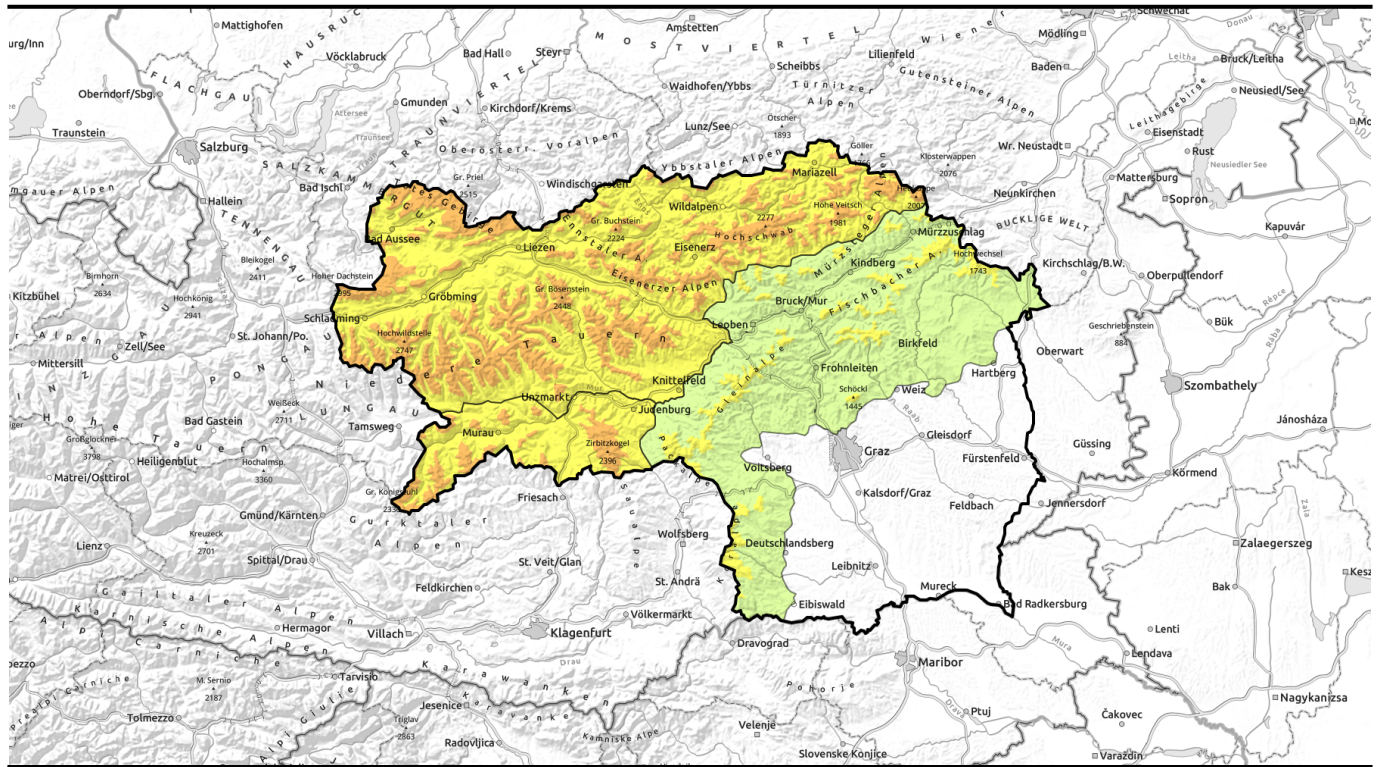


Avalanche report for Monday, 06.02.2023



High avalanche danger on leeward slopes

	<p>timberline</p>	<p>Gurktaler Alpen, Seetaler Alpen</p>		
	<p>timberline</p>	<p>Hochschwabgebiet, Eisenerzer Alpen, Ennstaler Alpen, Dachsteingebiet, Rottenmann Tauern, Nördliche Wölzer Tauern, Schladminger Tauern Nord, Totes Gebirge, Schladminger Tauern Süd, Südliche Wölzer Tauern, Seckauer Tauern, Mürztal</p>		
	<p>timberline</p>	<p>Westliche Fischbacher Alpen und Grazer Bergland, Koralpe, Stub- und Gleinalpe, Mürztal, Östliche Fischbacher Alpen und Wechselgebiet</p>		

Avalanche problems



Danger ratings



Expositions



Avalanche report for Monday, 06.02.2023

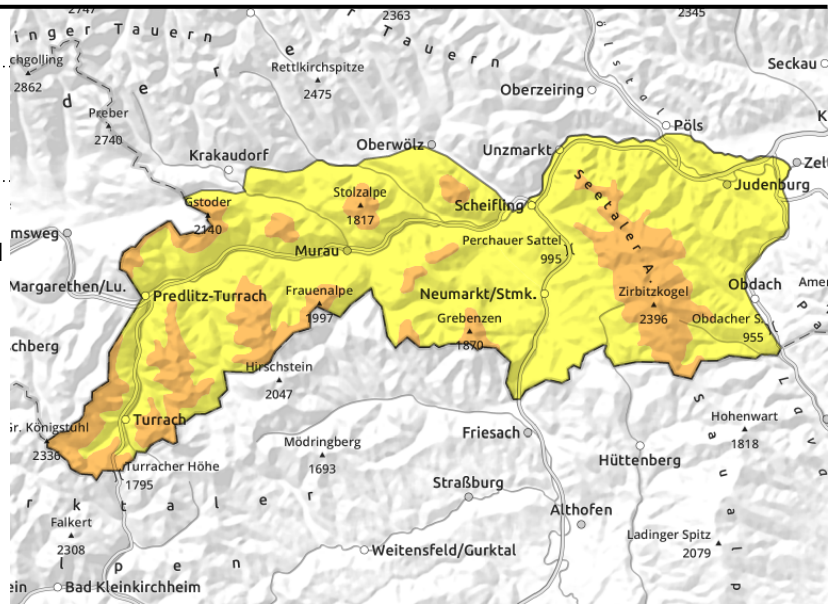
Gurktaler Alpen, Seetaler Alpen



timberline



wide-ranging snowdrift accumulations, easily triggered



CONSIDERABLE avalanche danger. Trigger-sensitive snowdrifts below the treeline

Avalanche danger above the timberline is CONSIDERABLE (Dankger Level 3). Avalanche prone locations lie in N/E/S facing terrain. Snowdrift accumulations are deposited near ridgelines in steep gullies and bowls as well as behind abrupt discontinuities in the terrain well down below the treeline and in sparsely wooded zones. Slabs can trigger even by the weight of one sole person. On sunny slopes, loose-snow avalanches are possible in steep rough and rocky terrain. On steep grass-covered slopes, naturally triggered glide-snow avalanches are possible.

Snowpack structure

During the last few days the stormy NW winds have transported the fresh snow massively. Weak layers in the fresh drifts and in transitions to the loose fresh snow are highly prone to triggering. More deeply embedded inside the snowpack are layers of faceted crystals bordering against melt-freeze crusts which weaken the entire snow cover.

Due to dropping temperatures the moistened snowpack stabilized down to lower altitudes.

Weather

On Monday, cold northerly winds will bring widespread cloudbanks, but the peaks will mostly remain free (clouds above summit level). Sunshine will often be hampered. Later in the day, particularly in the rimline ranges and the Northern Alps, low-lying foglike clouds will move in. Winds will be northerly at 20-35 km/hr. At 2000 m: -12 degrees.

Outlook

Tuesday will be quite sunny, but cold. Avalanche danger will decrease.

Avalanche problems



Danger ratings



Expositions



Avalanche report for Monday, 06.02.2023

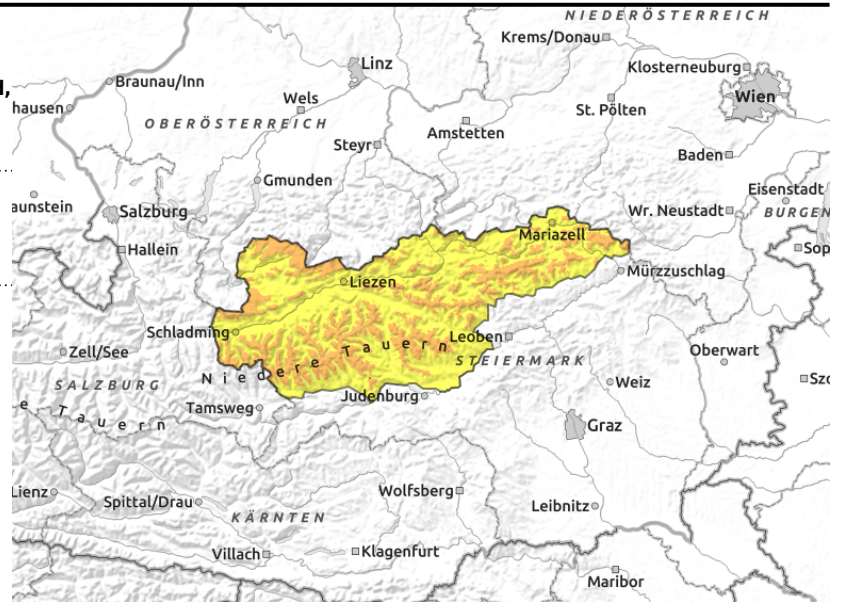
Hochschwabgebiet, Eisenerzer Alpen, Ennstaler Alpen, Dachsteingebiet, Rottenmanner Tauern, Nördliche Wölzer Tauern, Schladminger Tauern Nord, Totes Gebirge, Schladminger Tauern Süd, Südliche Wölzer Tauern, Seckauer Tauern, Mürzsteiger Alpen



timberline



wide-ranging snowdrift accumulations atop unfavourable base



Do not underestimate snowdrift accumulations!

Avalanche danger above the treeline is considerable, below that altitude danger is moderate. Stormy NW winds have formed wide-ranging snowdrift accumulations, particularly in E/S facing terrain. The drifts lie near ridgelines in steep gullies and bowls as well as distant from ridgelines. Slab avalanches (Magnitude 3) can trigger even by the weight of one sole person. On sunny slopes, naturally triggered and loose-snow avalanches are possible in steep rough and rocky terrain. On steep grassy slopes, naturally triggered glide-snow avalanches are possible in some places.

Snowpack structure

On the weekend, stormy NW winds prevailed, massively transporting the fresh snow. At high altitudes the drifts were deposited atop loose fresh snow, bonding to the snowpack is poor. Weak layers in the fresh drifts and in border points to the loose fresh snow are prone to triggering. More deeply embedded inside the snowpack are layers of faceted crystals bordering against melt-freeze crusts which weaken the entire snowpack.

Due to dropping temperatures the moistened snowpack stabilized and encrusted increasingly.

Weather

On Monday, cold northerly winds will bring widespread cloudbanks, but the peaks will mostly remain free (clouds above summit level). Sunshine will often be hampered. Later in the day, particularly in the rimline ranges and the Northern Alps, low-lying foglike clouds will move in. Winds will be northerly at 20-35 km/hr. At 2000 m: -12 degrees.

Outlook

Tuesday will be quite sunny, but cold. Avalanche danger will decrease.

Avalanche problems



Danger ratings

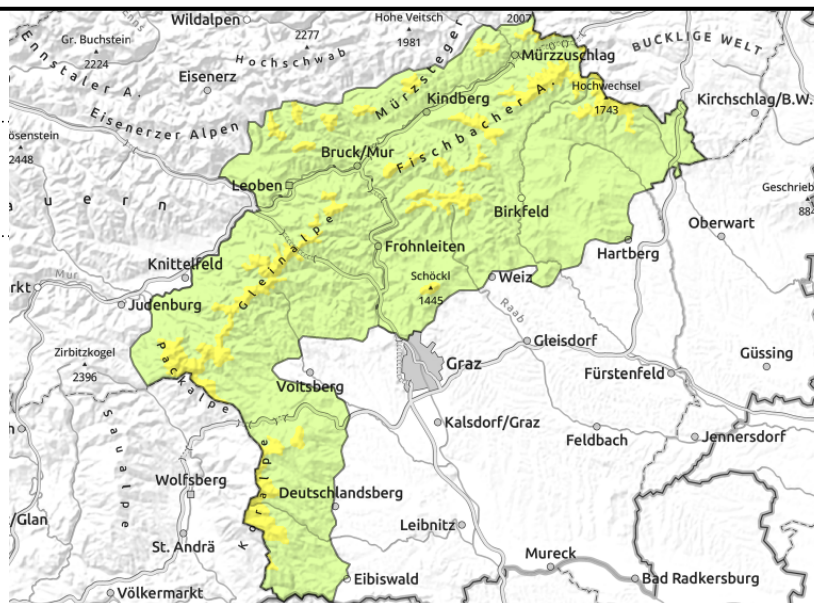


Expositions



Avalanche report for Monday, 06.02.2023

Westliche Fischbacher Alpen und Grazer Bergland, Koralpe, Stub- und Gleinalpe, Mürztaler Alpen, Östliche Fischbacher Alpen und Wechselgebiet



MODERATE avalanche danger above the treeline

Above the treeline, MODERATE avalanche danger prevails, below that altitude danger is LOW. Avalanche prone locations due to trigger-sensitive snowdrift accumulations lie on E/S facing slopes. Frequency of danger zones increases with ascending altitude, and with increasing deepness of the snowpack the avalanches (generally by large additional loading) can reach medium size above the treeline. On steep grassy slopes, naturally triggered glide-snow avalanches are possible in some places.

Snowpack structure

On the weekend, stormy NW winds prevailed, massively transporting the fresh snow. At high altitudes the drifts were deposited atop loose fresh snow, bonding to the snowpack is poor. Weak layers in the fresh drifts and in border points to the loose fresh snow are prone to triggering. More deeply embedded inside the snowpack are layers of faceted crystals bordering against melt-freeze crusts which weaken the entire snowpack. Due to dropping temperatures the moistened snowpack stabilized and encrusted increasingly.

Weather

On Monday, cold northerly winds will bring widespread cloudbanks, but the peaks will mostly remain free (clouds above summit level). Sunshine will often be hampered. Later in the day, particularly in the rimline ranges and the Northern Alps, low-lying foglike clouds will move in. Winds will be northerly at 20-35 km/hr. At 2000 m: -12 degrees.

Outlook

Tuesday will be quite sunny, but cold. Avalanche danger will decrease.

Translated by Jeffrey McCabe, www.creativtrans.com

Avalanche problems



Danger ratings



Expositions

