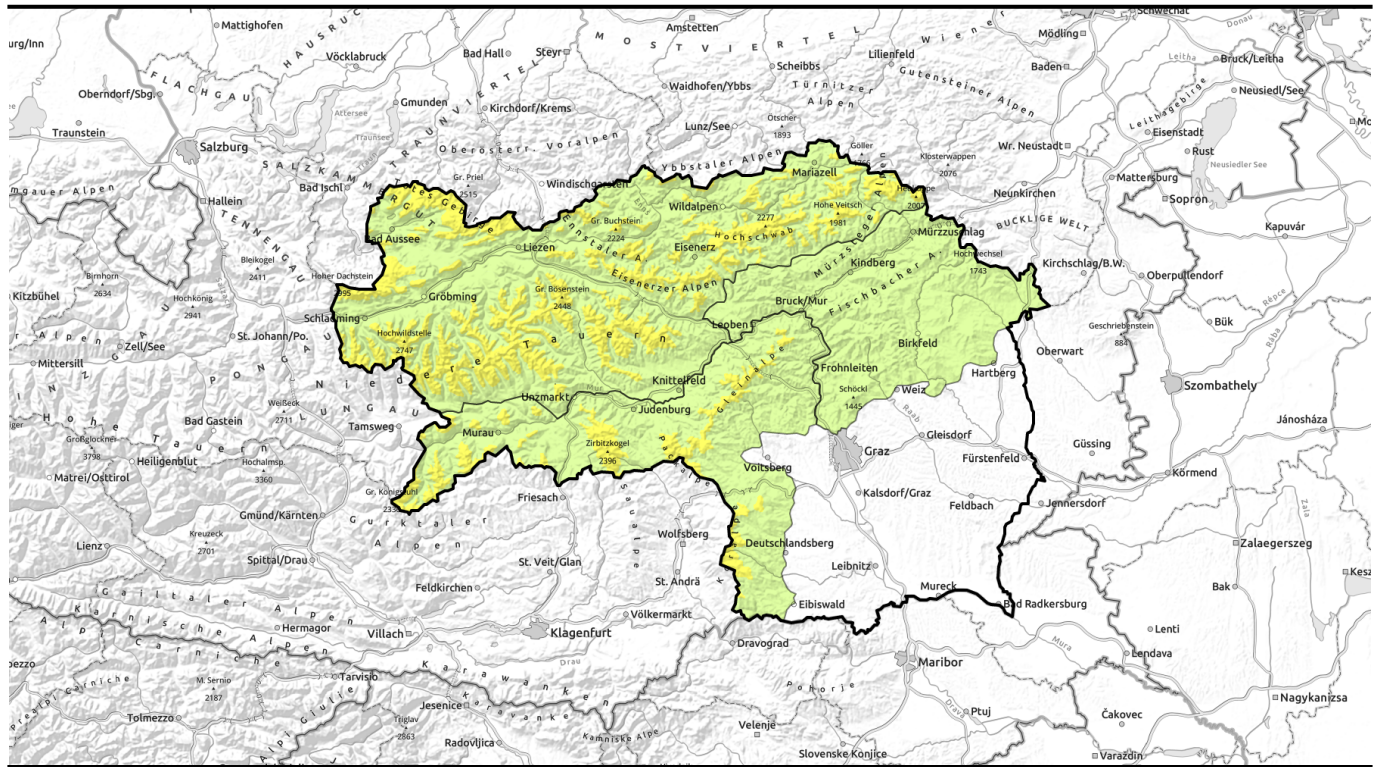


Avalanche report for Sunday, 29.01.2023



Moderate avalanche danger at high altitudes

	<p>forestline</p>	<p>Gurktaler Alpen, Seetaler Alpen, Stub- und Gleinalpe, Koralpe</p>	
	<p>forestline</p>	<p>Mürzsteger Alpen, Hochschwabgebiet, Eisenerzer Alpen, Ennstaler Alpen, Totes Gebirge, Rottenmann Tauern, Dachsteingebiet, Seckauer Tauern, Südliche Wölzer Tauern, Nördliche Wölzer Tauern, Schladminger Tauern Nord, Schladminger Tauern Süd</p>	
	<p></p>	<p>Westliche Fischbacher Alpen und Grazer Bergland, Östliche Fischbacher Alpen und Wechselgebiet, Mürztaler Alpen</p>	

Avalanche problems



Danger ratings

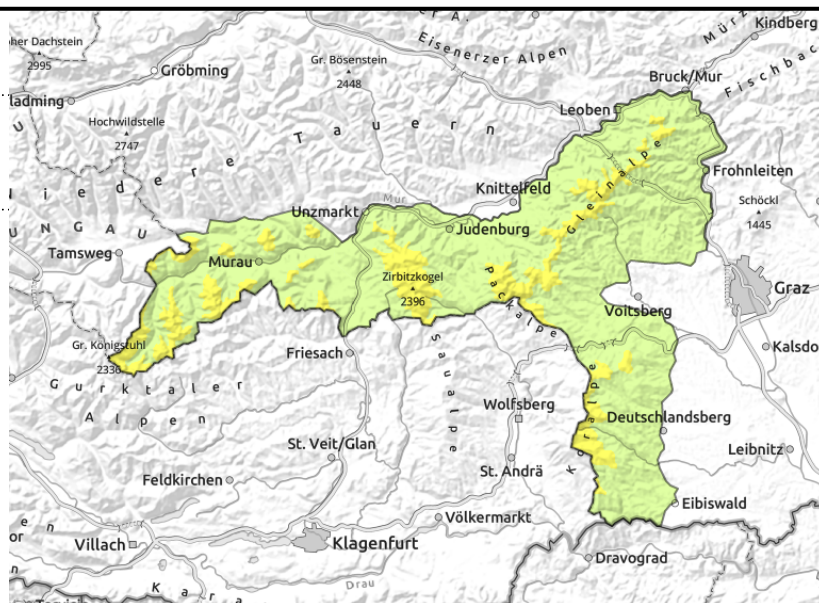
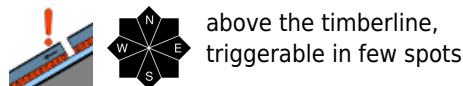


Expositions



Avalanche report for Sunday, 29.01.2023

Gurktaler Alpen, Seetaler Alpen, Stub- und Gleinalpe, Koralpe



Moderate avalanche danger at high altitudes, avoid large additional loading on steep slopes

Avalanche danger in the Gurktal and Seetal Alps, on Packalpe and Koralpe, is moderate above the timberline. A weak layer distributed throughout all aspects inside the snowpack fundament (persistent weak layer) can be triggered in only few places by large additional loading, but huge slab avalanches are possible, Transitions from shallow to deep snow are the most critical spots. On steep slopes, maintain distances from others!

Snowpack structure

The snowdrifts generated on Monday have settled, new weak layers inside the snowpack are no longer expected. But weak layers of faceted crystals bordering on melt-freeze crusts are found further down inside the snowpack. They are widespread but buried relatively deep inside the snowpack or present only in a few places, mostly triggerable by large additional loading.

Weather

On Sunday early morning, clouds and residual fog will disperse, thereafter sunshine can be expected. At 2000 m: rising from -11 to -5 degrees. Winds will initially be moderate from the north, then shift during the daytime to northwesterly and intensify.

Also Monday will begin with sunny skies, but the increasingly stormy NW winds will bring us a new cold front in the afternoon, and with it, some fresh snowfall.

Outlook

As a result of the fresh fallen snow and wind, avalanche danger levels will rise somewhat starting on Monday afternoon (snowdrift problem).

Avalanche problems



Danger ratings

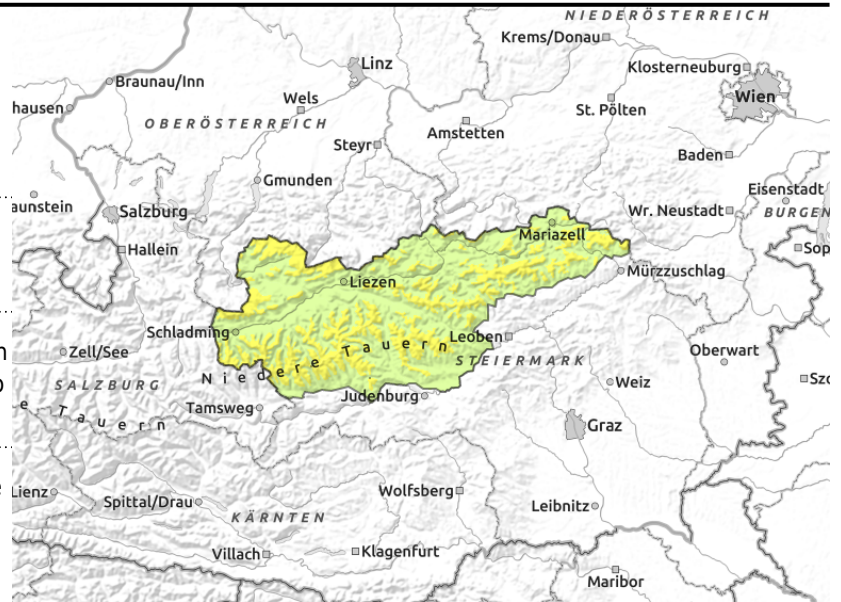
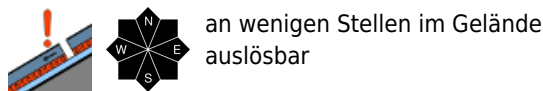
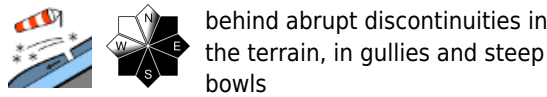


Expositions



Avalanche report for Sunday, 29.01.2023

Mürzsteiger Alpen, Hochschwabgebiet, Eisenerzer Alpen, Ennstaler Alpen, Totes Gebirge, Rottenanner Tauern, Dachsteingebiet, Seckauer Tauern, Südliche Wölzer Tauern, Nördliche Wölzer Tauern, Schladminger Tauern Nord, Schladminger Tauern Süd



Trigger-sensitive snowdrifts above the timberline: moderate avalanche danger

Above the timberline, moderate avalanche danger prevails, below that altitude danger is low. Avalanche prone locations are primarily behind abrupt discontinuities in the terrain, created by snowdrift masses on east and south-facing slopes, where small-to-medium sized avalanches can be triggered even by minimum additional loading. In addition, in all high altitude aspects there is a persistent weak layer of faceted crystals bordering on melt-freeze crusts deeply embedded inside the snowpack. Large-sized avalanches can be triggered by releasing this part of the snowpack.

Snowpack structure

Up to 20 cm of fresh snow amid strong N/W winds has generated fresh snowpack masses on east and south-facing slopes. These lie deposited atop surface hoar, which weakens the snowpack, but generally large additional loading is required to trigger an avalanche.

Weather

On Sunday early morning, clouds and residual fog will disperse, thereafter sunshine can be expected. At 2000 m: rising from -11 to -5 degrees. Winds will initially be moderate from the north, then shift during the daytime to northwesterly and intensify.

Also Monday will begin with sunny skies, but the increasingly stormy NW winds will bring us a new cold front in the afternoon, and with it, some fresh snowfall.

Outlook

As a result of the fresh fallen snow and wind, avalanche danger levels will rise somewhat starting on Monday afternoon (snowdrift problem).

Avalanche problems



Danger ratings



Expositions



Avalanche report for Sunday, 29.01.2023

Westliche Fischbacher Alpen und Grazer Bergland,
Östliche Fischbacher Alpen und Wechselgebiet,
Mürztaler Alpen



hardly any weak layers in the snowpack



Stable snowpack by and large. Low avalanche danger.

Avalanche danger is low. Isolated danger zones occur on north-facing slopes. On extremely steep slopes a slab avalanche triggering cannot be ruled out.

Snowpack structure

Beneath the few cm of fresh snow the snowpack has bonded and consolidated amid shifting mild and cold temperatures, and is relatively stable. Inside the snowpack there are hardly any weak layers.

Weather

On Sunday early morning, clouds and residual fog will disperse, thereafter sunshine can be expected. At 2000 m: rising from -11 to -5 degrees. Winds will initially be moderate from the north, then shift during the daytime to northwesterly and intensify.

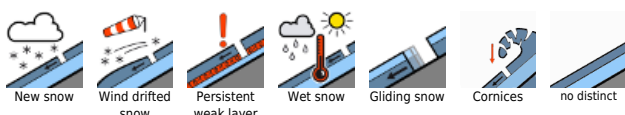
Also Monday will begin with sunny skies, but the increasingly stormy NW winds will bring us a new cold front in the afternoon, and with it, some fresh snowfall.

Outlook

As a result of the fresh fallen snow and wind, avalanche danger levels will rise somewhat starting on Monday afternoon (snowdrift problem).

Translated by Jeffrey McCabe, www.creativtrans.com

Avalanche problems



Danger ratings



Expositions

