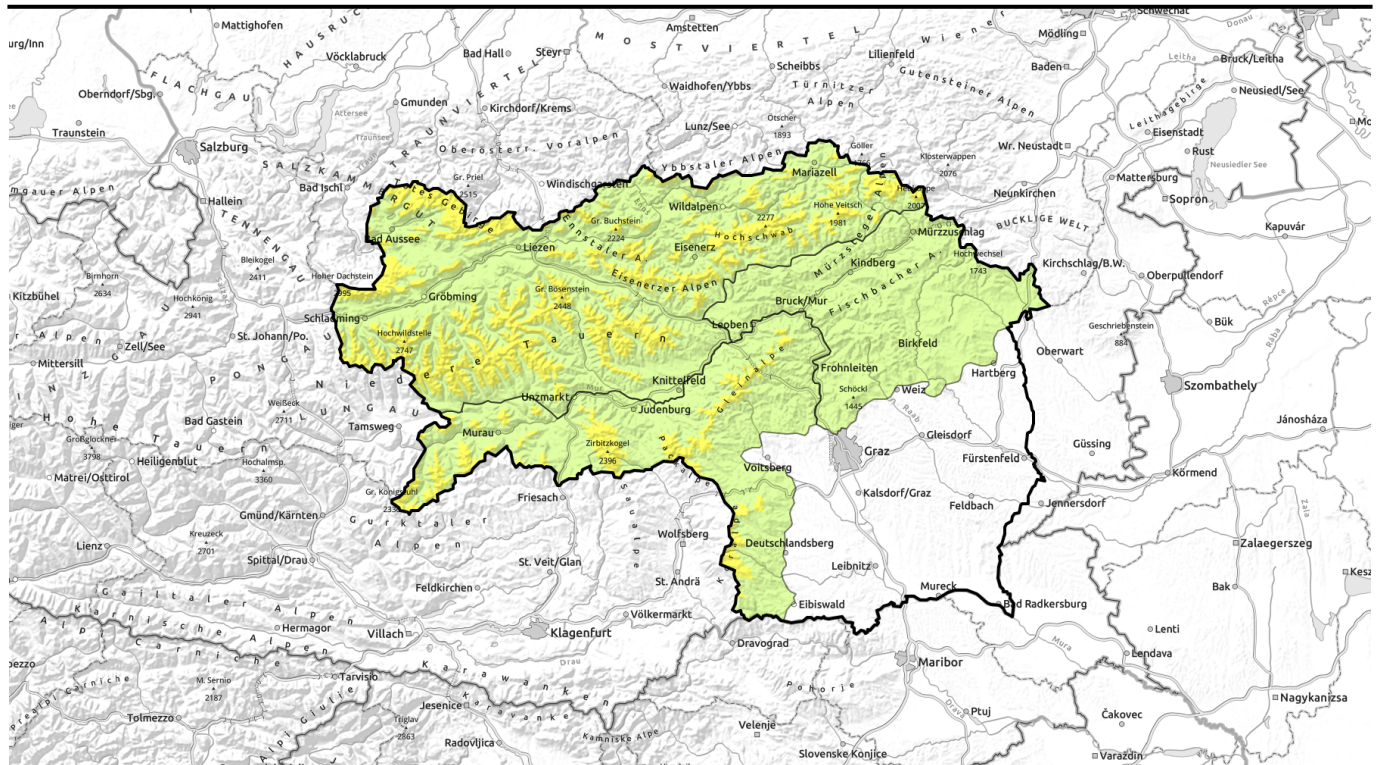


# Avalanche report for Saturday, 28.01.2023



## Moderate avalanche danger at high altitudes

	<p>forestline</p>	<p>Gurktaler Alpen, Seetaler Alpen, Stub- und Gleinalpe, Koralpe</p>	
	<p>forestline</p>	<p>Mürzsteger Alpen, Hochschwabgebiet, Eisenerzer Alpen, Ennstaler Alpen, Totes Gebirge, Rottenmann Tauern, Dachsteingebiet, Seckauer Tauern, Südliche Wölzer Tauern, Nördliche Wölzer Tauern, Schladminger Tauern Nord, Schladminger Tauern Süd</p>	
	<p></p>	<p>Westliche Fischbacher Alpen und Grazer Bergland, Östliche Fischbacher Alpen und Wechselgebiet, Mürztaler Alpen</p>	

### Avalanche problems



### Danger ratings

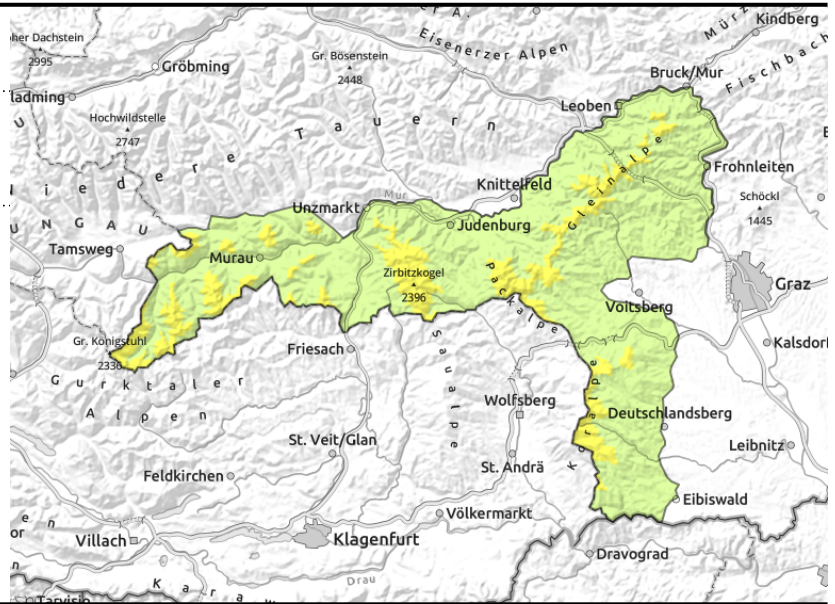
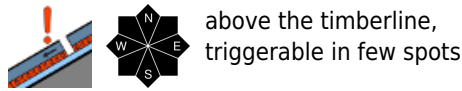


### Expositions



# Avalanche report for **Saturday, 28.01.2023**

## Gurktaler Alpen, Seetaler Alpen, Stub- und Gleinalpe, Koralpe



## Moderate avalanche danger at high altitudes, avoid large additional loading on steep slopes

Avalanche danger in the Gurktal and Seetal Alps, on Packalpe and Koralpe, is moderate above the timberline. A weak layer distributed throughout all aspects inside the snowpack fundament (persistent weak layer) can be triggered in only few places by large additional loading, but huge slab avalanches are possible, Transitions from shallow to deep snow are the most critical spots. On steep slopes, maintain distances from others!

### Snowpack structure

The snowdrifts generated on Monday have settled, new weak layers inside the snowpack are no longer expected. But weak layers of faceted crystals bordering on melt-freeze crusts are found further down inside the snowpack. They are widespread but buried relatively deep inside the snowpack or present only in a few places, mostly triggerable by large additional loading.

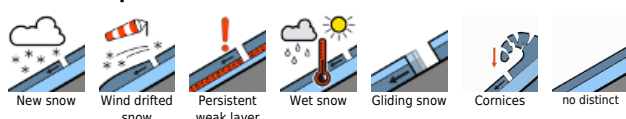
### Weather

On Saturday, it will remain cold and wintery: -10 to -12 degrees at 2000m plus strong N/NW winds. South of the Main Alpine Ridge, clouds will disperse and a bit of sunshine is possible. Sunday will bring slightly higher temperatures and sunny conditions - but still brisk northerly winds.

### Outlook

Avalanche danger is not expected to change significantly by next week.

#### Avalanche problems



#### Danger ratings

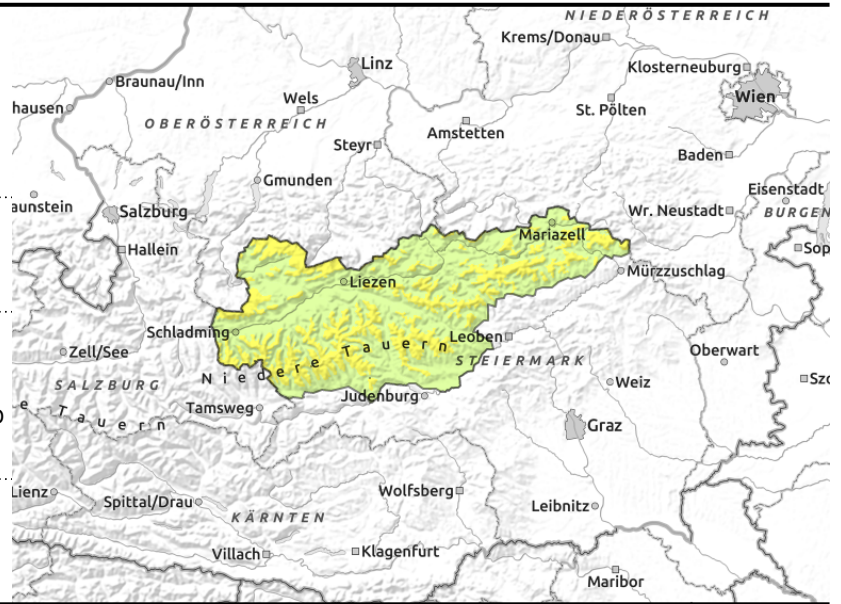
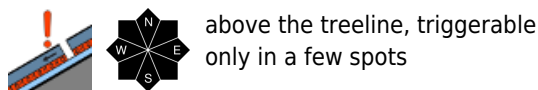
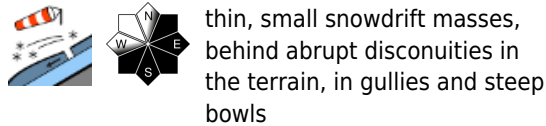


#### Expositions



# Avalanche report for **Saturday, 28.01.2023**

**Mürzsteiger Alpen, Hochschwabgebiet, Eisenerzer Alpen, Ennstaler Alpen, Totes Gebirge, Rottenanner Tauern, Dachsteingebiet, Seckauer Tauern, Südliche Wölzer Tauern, Nördliche Wölzer Tauern, Schladminger Tauern Nord, Schladminger Tauern Süd**



## Trigger-sensitive snowdrifts above the timberline: moderate avalanche danger

Above the timberline, moderate avalanche danger prevails, below that altitude danger is low. Avalanche prone locations are primarily created by snowdrift masses on east and south-facing slopes, where small-to-medium sized avalanches can be triggered even by minimum additional loadint. In addition, in all high altitude aspects there is a persistent weak layer of faceted crystals bordering on melt-freeze crusts deeply embedded inside the snowpack. Large-sized avalanches can be triggered by releasing this part of the snowpack.

### Snowpack structure

A small amount of fresh snow amid strong N/NW winds has generated fresh snowpack masses on east and south-facing slopes. These lie deposited atop surface hoar, which weakens the snowpack, but generally large additional loading is required to trigger an avalanche.

### Weather

On Saturday, it will remain cold and wintery: -10 to -12 degrees at 2000m plus strong N/NW winds. South of the Main Alpine Ridge, clouds will disperse and a bit of sunshine is possible. Sunday will bring slightly higher temperatures and sunny conditions - but still brisk northerly winds.

### Outlook

Avalanche danger is not expected to change significantly by next week. On Monday afternoon, fresh snowfall is expected in the northern barrier cloud regions. This will intensify the snowdrift problem.

#### Avalanche problems



#### Danger ratings



#### Expositions

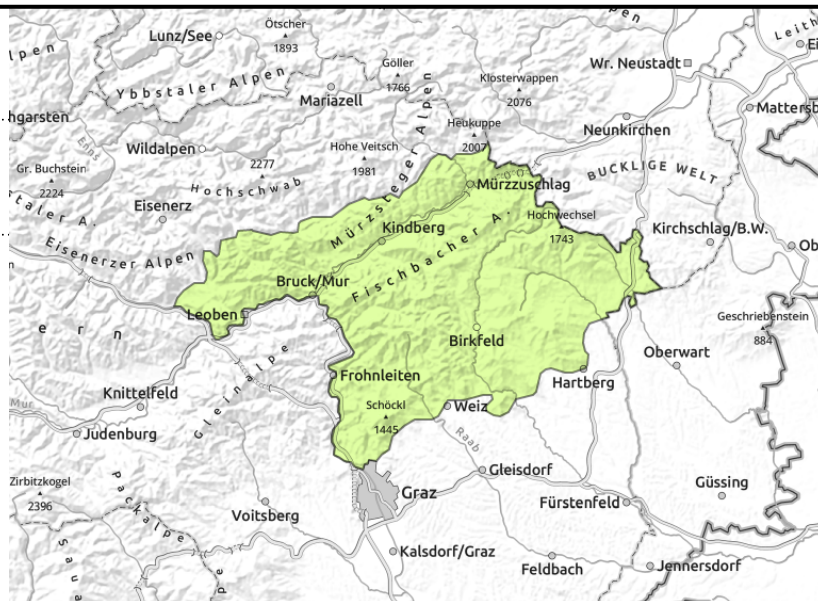


# Avalanche report for Saturday, 28.01.2023

Westliche Fischbacher Alpen und Grazer Bergland,  
Östliche Fischbacher Alpen und Wechselgebiet,  
Mürztaler Alpen



hardly any weak layers in the snowpack



## Snowpack was able to settle. Low avalanche danger.

Avalanche danger is low. Isolated danger zones occur on north-facing slopes. On extremely steep slopes a slab avalanche triggering cannot be ruled out.

### Snowpack structure

Amid fluctuating temperatures, the snowpack was able to consolidate. Inside the snowpack are hardly any weak layers.

### Weather

On Saturday, it will remain cold and wintery: -10 to -12 degrees at 2000m plus strong N/NW winds.

South of the Main Alpine Ridge, clouds will disperse and a bit of sunshine is possible.

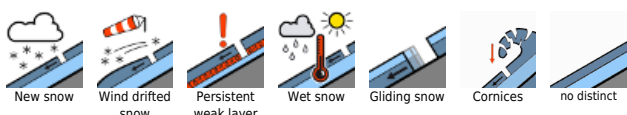
Sunday will bring slightly higher temperatures and sunny conditions - but still brisk northerly winds.

### Outlook

Avalanche danger is not expected to change significantly by next week. On Monday afternoon, fresh snowfall is expected in the northern barrier cloud regions. This will intensify the snowdrift problem.

Translated by Jeffrey McCabe, [www.creativtrans.com](http://www.creativtrans.com)

#### Avalanche problems



#### Danger ratings



#### Expositions

