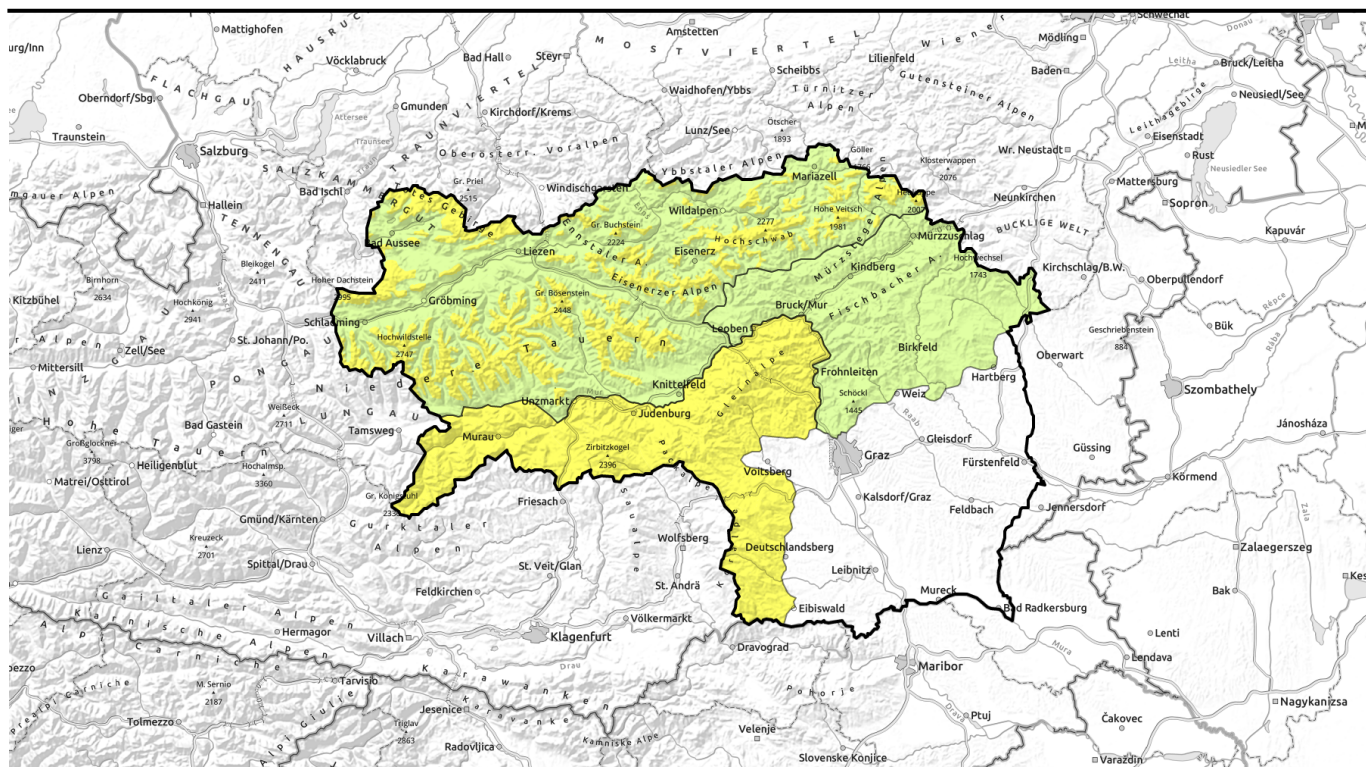

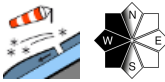

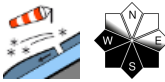

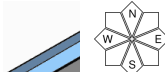


# Avalanche report for Friday, 27.01.2023



## Some fresh snowfall in northern barrier cloud regions. New danger zones.

	<p>Gurktaler Alpen, Seetaler Alpen, Stub- und Gleinalpe, Koralpe</p>	
	<p>timberline Mürzteger Alpen, Hochschwabgebiet, Eisenerzer Alpen, Ennstaler Alpen, Totes Gebirge, Rottenmanner Tauern, Dachsteingebiet, Seckauer Tauern, Südliche Wölzer Tauern, Nördliche Wölzer Tauern, Schladminger Tauern Nord, Schladminger Tauern Süd</p>	
	<p>Westliche Fischbacher Alpen und Grazer Bergland, Östliche Fischbacher Alpen und Wechselgebiet, Mürztaler Alpen</p>	

### Avalanche problems



### Danger ratings



### Expositions

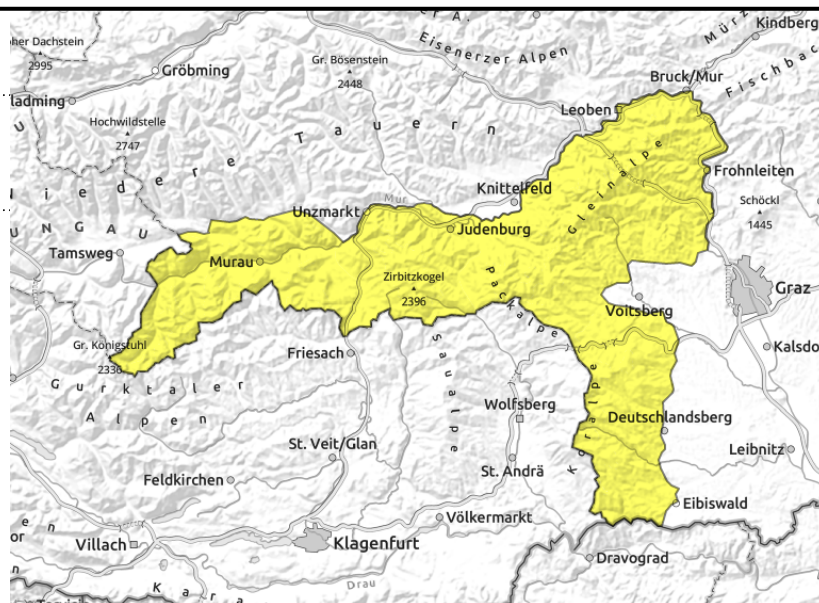


# Avalanche report for Friday, 27.01.2023

**Gurktaler Alpen, Seetaler Alpen, Stub- und Gleinalpe, Koralpe**



triggerable at rimlines of snowdrift accumulations



## Snowdrift problem

Avalanche danger in the Gurktal and Seetal Alps, on Packalpe and Koralpe, is moderate. Older snowdrifts lie deposited on west-facing slopes. Backcountry tourers can trigger a slab avalanche by large additional loading. Slab avalanches can fracture down to more deeply embedded layers inside the snowpack (regions: Seetal and Gurktal Alps).

## Snowpack structure

The weight of the snowpack itself plus the warming has been able to settle the snow masses. Weak layers (soft, cold layers) are found inside the snowdrifts. In the Gurktal and Seetal Alps, soft layers inside the snowpack weaken it further, particularly on shady slopes. Near forested zones the snow is still powdery.

## Weather

Cold and windy weather will arrive on Friday. Particularly in the Northern Alps, light snowfall is anticipated: 5 -10 cm expected. In the other regions it will remain dry by and large, a bit of sunshine is possible from Turrach to Koralpe. At 2000 m.: -11 degrees; 30-60 m/hr N/NW winds.

## Outlook

Cold wintery weather conditions on Saturday. As a result of brisk northerly winds, skies will remain predominantly overcast, in northern and eastern regions a bit of snowfall is possible. Between Turrach and Koralpe, clouds may disperse somewhat.

### Avalanche problems



### Danger ratings

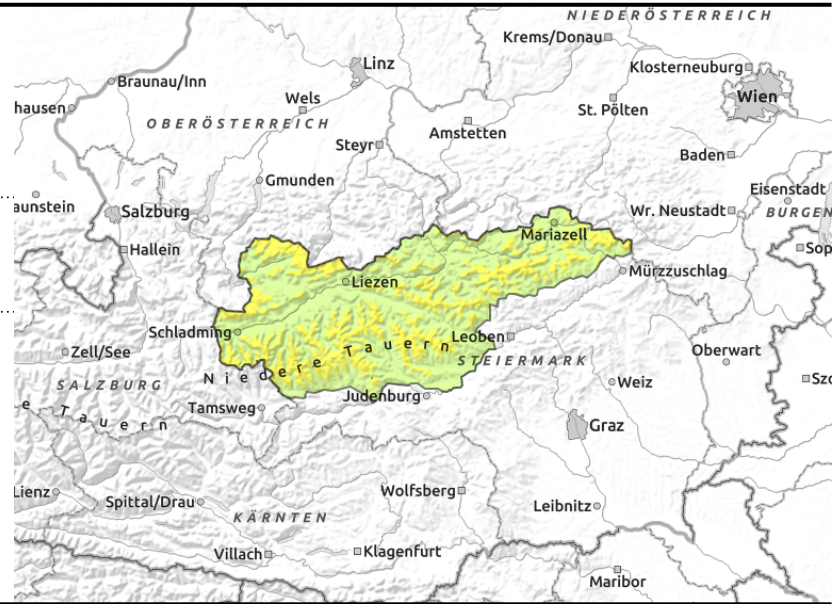
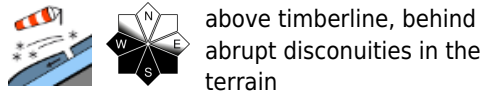


### Expositions



# Avalanche report for Friday, 27.01.2023

Mürzsteiger Alpen, Hochschwabgebiet, Eisenerzer Alpen, Ennstaler Alpen, Totes Gebirge, Rottenanner Tauern, Dachsteingebiet, Seckauer Tauern, Südliche Wölzer Tauern, Nördliche Wölzer Tauern, Schladminger Tauern Nord, Schladminger Tauern Süd



## Fresh snowdrifts above the timberline

Above the timberline, moderate avalanche danger prevails, below that altitude danger is low. Older snowdrifts lie deposited on west-facing slopes. A NW winds set in, the fresh fallen snow on south-facing slopes will be transported. In teh new danger zones slab avalanches can be triggered even by minimum additional loading and, in places, grow1 to medium size.

## Snowpack structure

The fresh fallen snow from the most recent period of precipitation has been able to settle by and large. Bonded snow in high alpine regions lies deposited atop a cold loose layder. At intermediate altitudes the snowpack has gained in firmness. On shady slopes the surface hoar which formed on Tuesday-Wednesday will be blanketed afresh. In the eastern massifs, there is little snow on the ground.

## Weather

Cold and windy weather will arrive on Friday. Particularly in the Northern Alps, light snowfall is anticipated: 5 -10 cm expected. In the other regions it will remain dry by and large, a bit of sunshine is possible from Turrach to Koralpe. At 2000 m.: -11 degrees; 30-60 m/hr N/NW winds.

## Outlook

Cold wintery weather conditions on Saturday. As a result of brisk northerly winds, skies will remain predominantly overcast, in northern and eastern regions a bit of snowfall is possible. Between Turrach and Koralpe, clouds may disperse somewhat.

### Avalanche problems



### Danger ratings



### Expositions

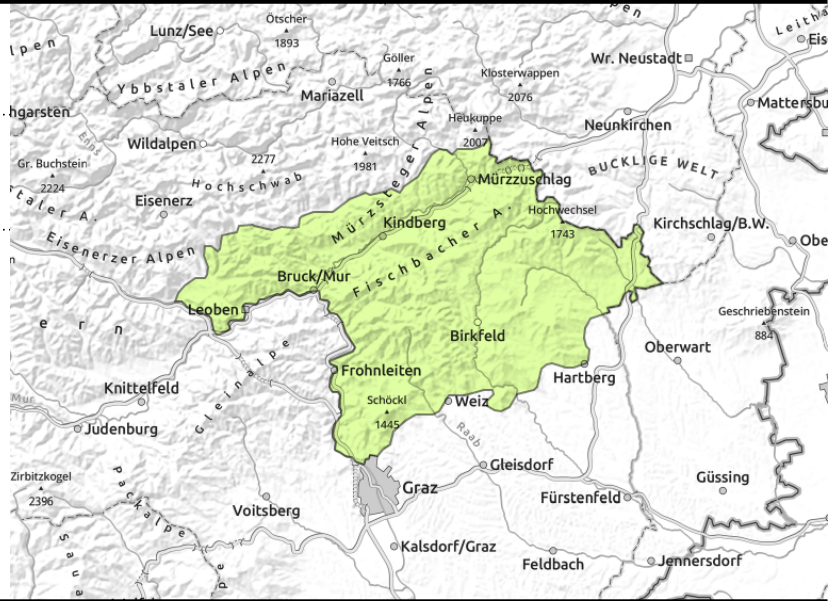


# Avalanche report for Friday, 27.01.2023

Westliche Fischbacher Alpen und Grazer Bergland,  
Östliche Fischbacher Alpen und Wechselgebiet,  
Mürztaler Alpen



hardly any weak layers in the snowpack



## Snowpack was able to settle. Low avalanche danger.

Avalanche danger is low. Isolated danger zones occur on north-facing slopes. On extremely steep slopes a slab avalanche triggering cannot be ruled out.

### Snowpack structure

As temperatures dropped, the snowpack was able to firm up. Inside the snowpack are hardly any weak layers.

### Weather

Cold and windy weather will arrive on Friday. Particularly in the Northern Alps, light snowfall is anticipated: 5 -10 cm expected. In the other regions it will remain dry by and large, a bit of sunshine is possible from Turrach to Koralpe. At 2000 m.: -11 degrees; 30-60 m/hr N/NW winds.

### Outlook

Cold wintery weather conditions on Saturday. As a result of brisk northerly winds, skies will remain predominantly overcast, in northern and eastern regions a bit of snowfall is possible. No significant change in avalanche danger levels is expected.

Translated by Jeffrey McCabe, [www.creativtrans.com](http://www.creativtrans.com)

#### Avalanche problems



#### Danger ratings



#### Expositions

