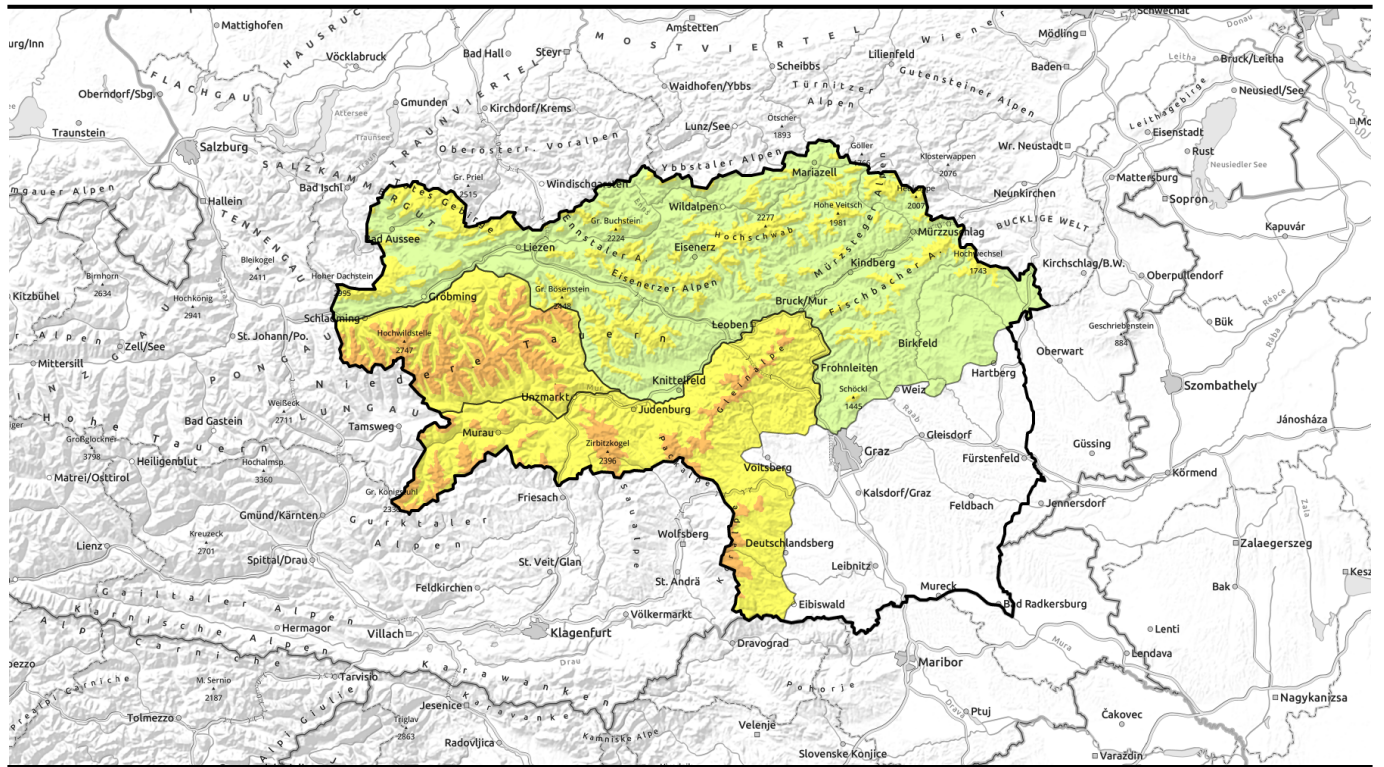

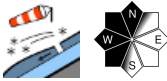

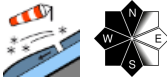

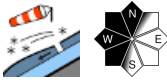


Avalanche report for Thursday, 26.01.2023



Snowdrift accumulations on west-facing slopes

	<p>timberline</p>	<p>Gurktaler Alpen, Seetaler Alpen, Stub- und Gleinalpe, Koralpe</p>	
	<p>forestline</p>	<p>Schladminger Tauern Süd, Südliche Wölzer Tauern, Nördliche Wölzer Tauern, Schladminger Tauern Nord</p>	
	<p>timberline</p>	<p>Mürzteger Alpen, Mürztaler Alpen, Westliche Fischbacher Alpen und Grazer Bergland, Östliche Fischbacher Alpen und Wechselgebiet, Hochschwabgebiet, Eisenerzer Alpen, Ennstaler Alpen, Totes Gebirge, Rottenmanner Tauern, Dachsteingebiet, Seckauer Tauern</p>	

Avalanche problems



Danger ratings

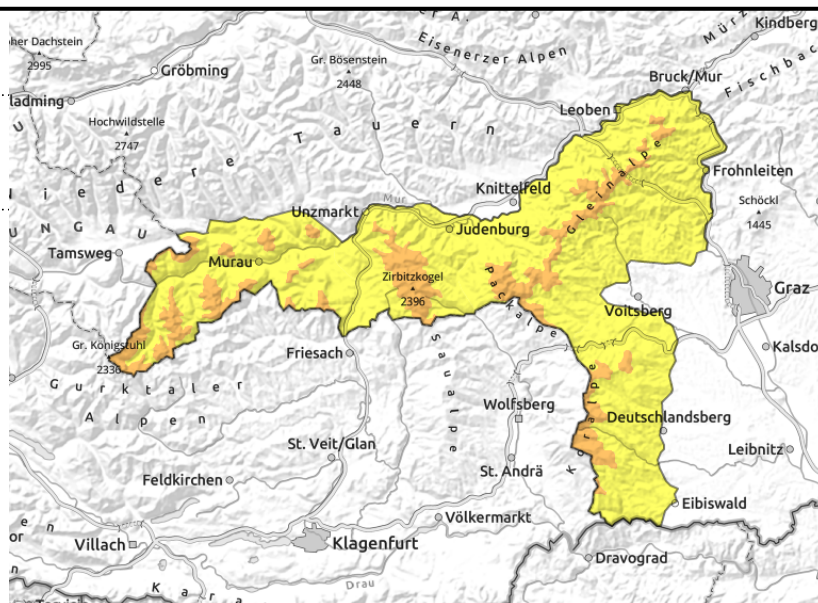
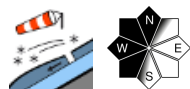


Expositions



Avalanche report for Thursday, 26.01.2023

Gurktaler Alpen, Seetaler Alpen, Stub- und Gleinalpe, Koralpe



Snowdrift problem

Avalanche danger in the Gurktal and Seetal Alps, on Packalpe and Koralpe, is considerable. West-facing slopes were wind-loaded by easterly winds. An atypical situation. In addition, on shady slopes there are older, cold snowdrift accumulations which can be triggered by one sole skier. Slab avalanches can fracture down to more deeply embedded layers inside the snowpack in the Seetal and Gurktal Alps. North-facing slopes are treacherous.

Snowpack structure

The weight of the snowpack itself plus the warming has been able to settle the snow masses. Weak layers are found inside the snowdrifts near the Koralpe. In the Gurktal and Seetal Alps, soft layers inside the snowpack weaken it further, particularly on shady slopes. Near forested zones the snow is still powdery. Where the snow was moist on Wednesday, a thin melt-freeze crust is forming.

Weather

Sunshine until after noon in the mountains, fog will only disturb in the rimline ranges (fog ceiling will be at 1200-1500 m). Towards evening, clouds and fog will increase from the north. Northerly winds will bring us cold air masses, temperatures will drop noticeably. At 2000 m in the morning: -5 degrees, in the evening -11 degrees.

Outlook

Cold, windy weather in the mountains on Friday. Particularly in the Northern Alps, light intermittent snowfall. In the other region it will usually remain dry, a bit of sunshine is possible from Turrach to Koralpe. Winds: N/NW at 30-60 km/hr. At 2000 m: -11 degrees. The snowpack will continue to settle.

Avalanche problems



Danger ratings

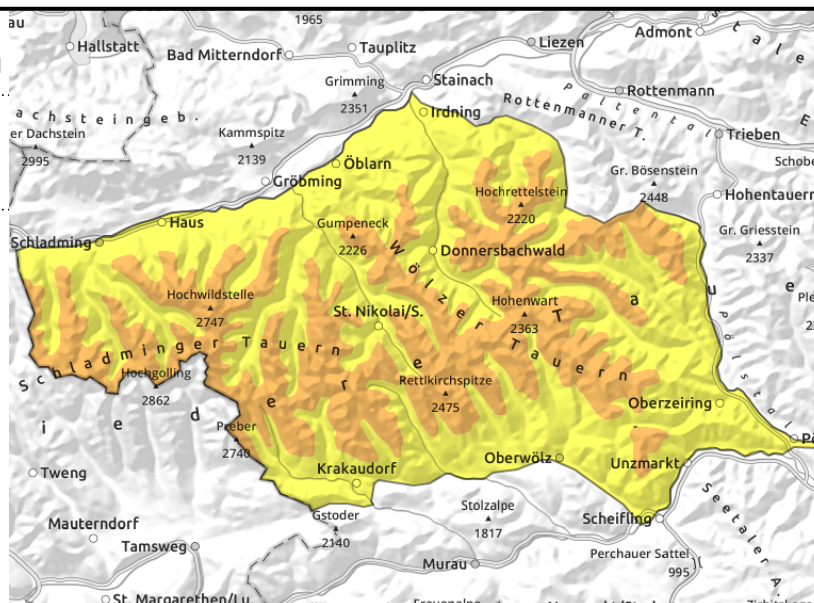
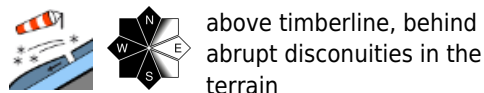


Expositions



Avalanche report for Thursday, 26.01.2023

Schladminger Tauern Süd, Südliche Wölzer Tauern, Nördliche Wölzer Tauern, Schladminger Tauern Nord



Fresh snowdrifts at high altitudes

Avalanche danger from Schladminger Tauern to Wölzer Tauern is considerable above the treeline, below that altitude danger level 2 prevails. The stormy easterly winds have loaded gullies and bowls in all aspects to the brim with drifts. Particular caution is urged behind abrupt discontinuities in the terrain. The situation is atypical, since winds have loaded west-facing slopes. The drifts can be easily triggered by one sole skier.

Snowpack structure

The fresh snow from the most recent period of precipitation has settled. Easterly winds from recent days have done their work on the snowpack surface. Snowdrifts lie atop a soft, cold layer. Up to 1600 m the snowpack surface is moist. In both cases, bonding to the old snowpack is insufficient. On north-facing slopes the expansive metamorphosis weakens the snowpack layering.

Weather

Sunshine until after noon in the mountains, fog will only disturb in the rimline ranges (fog ceiling will be at 1200-1500 m). Towards evening, clouds and fog will increase from the north. Northerly winds will bring us cold air masses, temperatures will drop noticeably. At 2000 m in the morning: -5 degrees, in the evening -11 degrees.

Outlook

Cold, windy weather in the mountains on Friday. Particularly in the Northern Alps, light intermittent snowfall. In the other region it will usually remain dry, a bit of sunshine is possible from Turrach to Koralpe. Winds: N/NW at 30-60 km/hr. At 2000 m: -11 degrees. The snowpack will continue to settle.

Avalanche problems



Danger ratings

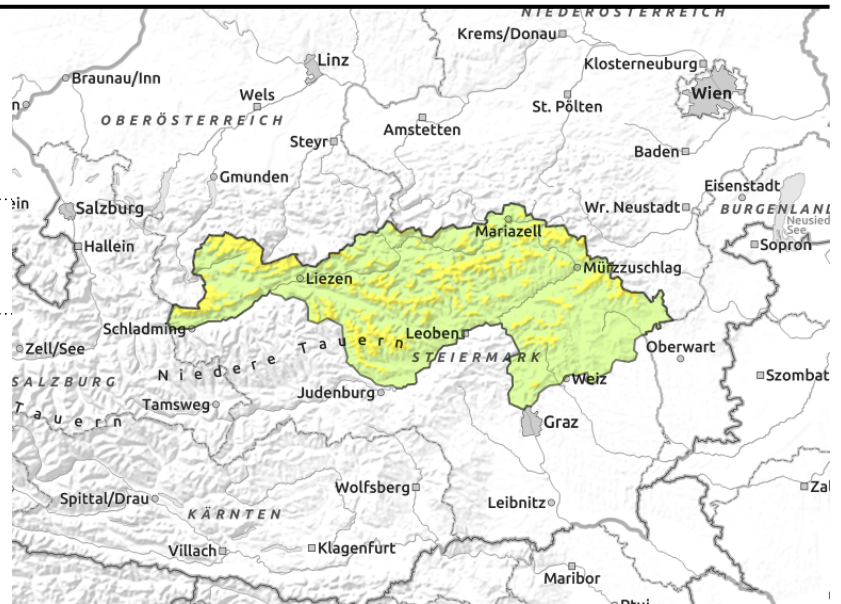
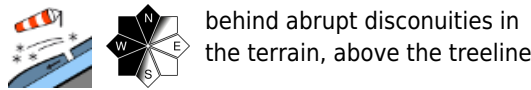


Expositions



Avalanche report for Thursday, 26.01.2023

Mürzsteiger Alpen, Mürztaler Alpen, Westliche Fischbacher Alpen und Grazer Bergland, Östliche Fischbacher Alpen und Wechselgebiet, Hochschwabgebiet, Eisenerzer Alpen, Ennstaler Alpen, Totes Gebirge, Rottenmanner Tauern, Dachsteingebiet, Seckauer Tauern



Trigger-sensitive snowdrift accumulations above the timberline

Avalanche danger above the treeline is moderate, below that altitude danger is low. Avalanche prone locations occur near ridgelines, behind abrupt discontinuities in the terrain. This applies particularly to western aspects. In danger zones, slab avalanches can be triggered even by minimum additional loading and, in places, grow to medium size.

Snowpack structure

The fresh fallen snow of recent days has been able to settle. Strong easterly winds have done their work on the snowpack. Bonded snow lies atop cold and loose layers. As a result of rising temperatures the snowpack surface will become moist up to intermediate altitudes. On shady slopes, surface hoar formed on Tuesday and Wednesday.

Weather

In the evening hours skies will still be overcast throughout Styria. In the north skies will gradually clear. On Wednesday, superb sunshine. Winds will be easterly. Along the rimline ranges, barrier clouds will accumulate, with fog. At 2000 m: -4 degrees.

Outlook

The snowpack will be able to settle somewhat.

Translated by Jeffrey McCabe, www.creativtrans.com

Avalanche problems



Danger ratings



Expositions

