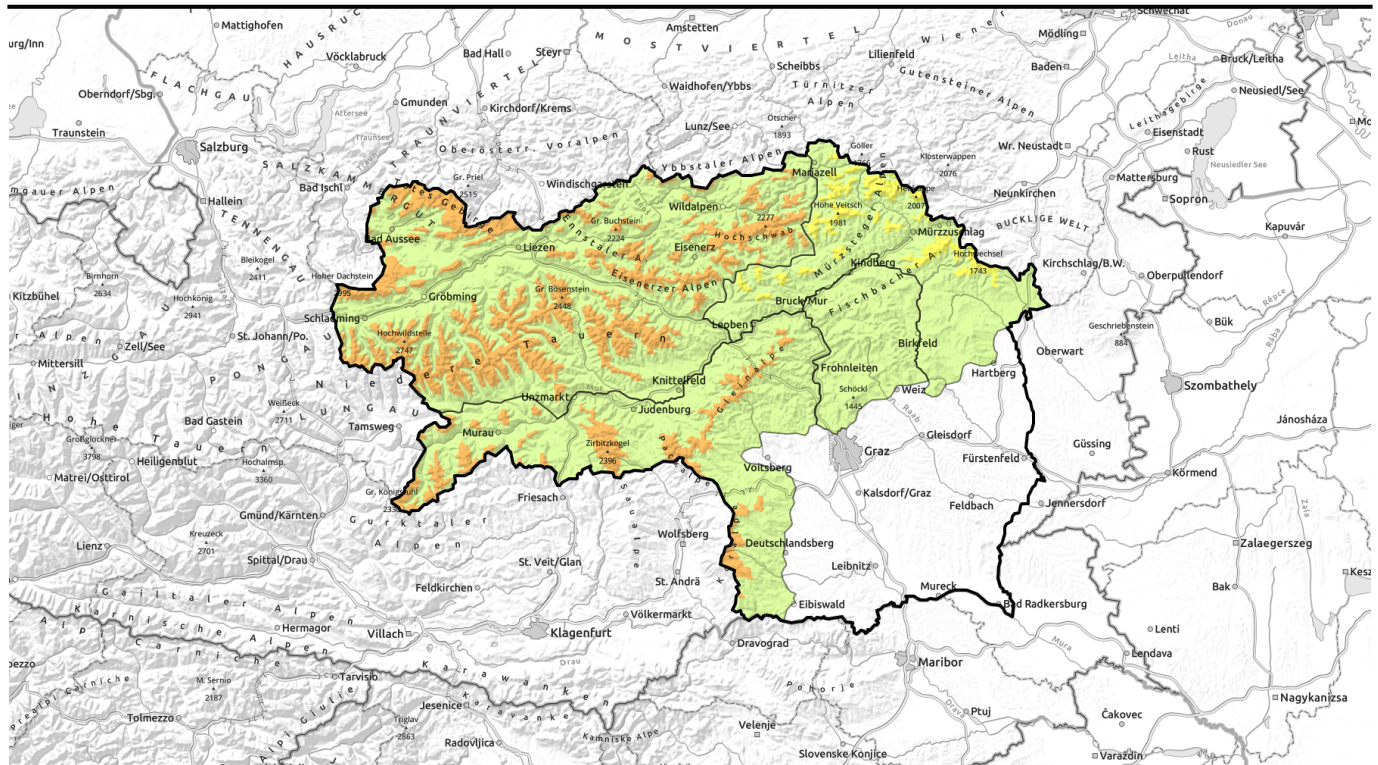













Avalanche report for Saturday, 21.01.2023



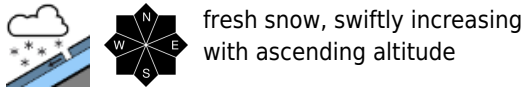
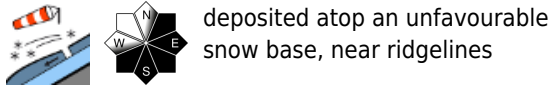
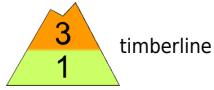
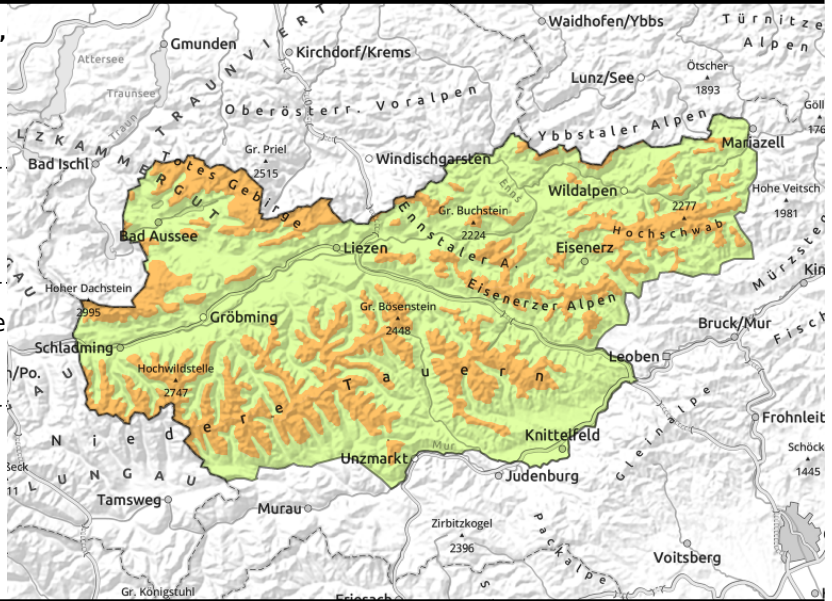
Fresh snowfall and wind - snowdrift problem! Considerable avalanche danger by and large.

	<p>timberline</p>	<p>Schladminger Tauern Nord, Nördliche Wölzer Tauern, Schladminger Tauern Süd, Südliche Wölzer Tauern, Rottenmanner Tauern, Seckauer Tauern, Eisenerzer Alpen, Hochschwabgebiet, Ennstaler Alpen, Totes Gebirge, Dachsteingebiet</p>	
	<p>timberline</p>	<p>Mürztaler Alpen, Mürzsteger Alpen, Östliche Fischbacher Alpen und Wechselgebiet</p>	
	<p>timberline</p>	<p>Koralpe, Stub- und Gleinalpe, Seetaler Alpen, Gurktaler Alpen</p>	
	<p>timberline</p>	<p>Westliche Fischbacher Alpen und Grazer Bergland</p>	

<p>Avalanche problems</p>	<p>Danger ratings</p>	<p>Expositions</p>
		

Avalanche report for Saturday, 21.01.2023

Schladminger Tauern Nord, Nördliche Wölzer Tauern, Schladminger Tauern Süd, Südliche Wölzer Tauern, Rottenmanner Tauern, Seckauer Tauern, Eisenerzer Alpen, Hochschwabgebiet, Ennstaler Alpen, Totes Gebirge, Dachsteingebiet



Brittle snowdrift accumulations. Instable snowpack.

Avalanche danger above the treeline is considerable. Danger zones are located in ridgeline terrain and behind abrupt discontinuities in the terrain. Particular caution is urged on high altitude north and east-facing slopes. Fresh, brittle snowdrifts have been deposited on top of an unfavourable old snowpack surface (persistent weak layer) on east-facing slopes. The drifts should not be underestimated at high altitudes! A slab release is possible even with minimum additional loading. Poor visibility makes assessing dangers on-site more difficult. Loose-snow avalanches are possible even as the snow falls.

Snowpack structure

Between Dachstein and Hochschwab, large amounts of fresh snow are expected on Saturday. In addition, strong-to-stormy winds will transport the fresh snow. The drifts will be deposited on E/S facing slopes, blanketing older snowdrift accumulations, beneath which lies a soft, loose layer. Gullies and bowls in all aspects are being laterally wind-loaded. Inside the snowpack fundament on shady slopes there is a sequence of melt-freeze layers and crusts with faceted crystals (unfavourable layering).

Weather

On Friday night on the northern flank of the Alps, heavy cloud cover, snowfall all night long.

Particularly from Ausseer Land into Mariazeller Land, large amounts of fresh snow are expected (20-30 cm). In the Murtal and Mürztal, less, but repeated rounds of snowfall are possible. The NW winds will increase in strength, blowing strong in the mountains.

Saturday: heavy cloud cover. Between Totes Gebirge and Hochschwab, continual snowfall. South of Niedere Tauern, only a bit of snowfall. Winds will be strong to stormy from NW. Icy cold in the mountains: at 2000 m, -13 degrees.

Sunday: cloud cover still dominates, some snowfall between Dachstein and Hochschwab. In the afternoon, winds and precipitation will ease, but cloud cover will persist. Cold at high altitudes: at 2000 m, -13 degrees.

Avalanche problems



Danger ratings



Expositions



Avalanche report for **Saturday, 21.01.2023**

Outlook

Considerable danger of slab avalanches persists

Avalanche problems



Danger ratings

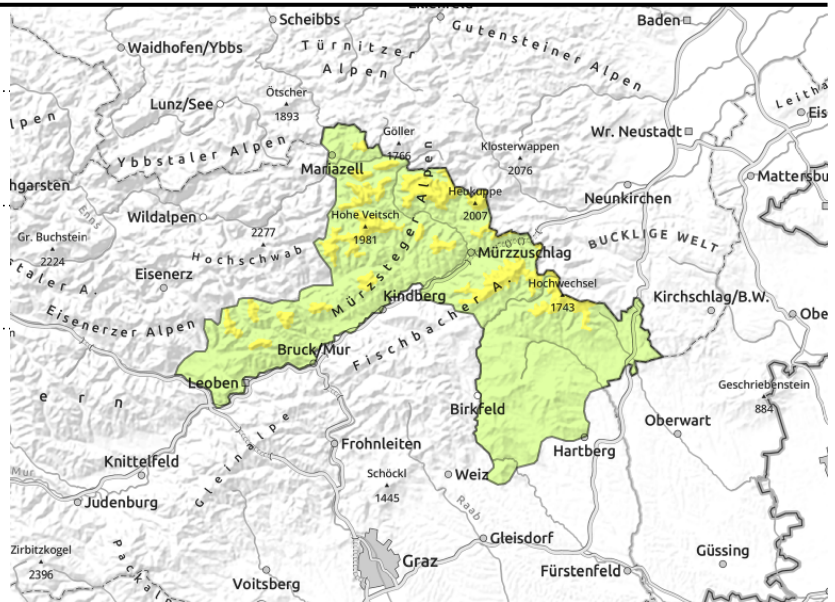
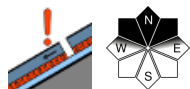
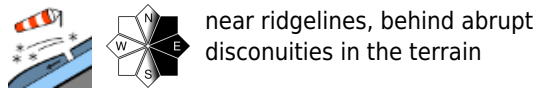


Expositions



Avalanche report for Saturday, 21.01.2023

Mürztaler Alpen, Mürzsteiger Alpen, Östliche Fischbacher Alpen und Wechselgebiet



Fresh snowdrifts on east-facing slopes

Avalanche danger continues to be MODERATE. Danger zones occur near ridgelines on south and east-facing slopes where there is fresh snowdrift. On north-facing slopes at high altitudes, there is a persistent weak layer. Slabs are possible with large additional loading on N/E facing slopes: small to medium sized avalanches.

Snowpack structure

Snowdrift accumulations have been deposited on south-facing slopes atop a hardened old snowpack surface above the treeline. On north-facing slopes the old snowpack is unfavourably layered.

Weather

Skies on the northern flank of the Alps are heavily overcast, continual snowfall through the night. Particularly from Ausseer Land into Mariazeller Land, large amounts of fresh snow are expected (20-30 cm). In the Murtal and Mürztal, less, but repeated rounds of snowfall are possible. The NW winds will increase in strength, blowing strong in the mountains.

Saturday: heavy cloud cover. Between Totes Gebirge and Hochschwab, continual snowfall. South of Niedere Tauern, only a bit of snowfall. Winds will be strong to stormy from NW. Icy cold in the mountains: at 2000 m, -13 degrees.

Sunday: cloud cover still dominates, some snowfall between Dachstein and Hochschwab. In the afternoon, winds and precipitation will ease, but cloud cover will persist. Cold at high altitudes: at 2000 m, -13 degrees.

Outlook

No significant change in avalanche danger levels

Avalanche problems



Danger ratings



Expositions



Avalanche report for Saturday, 21.01.2023

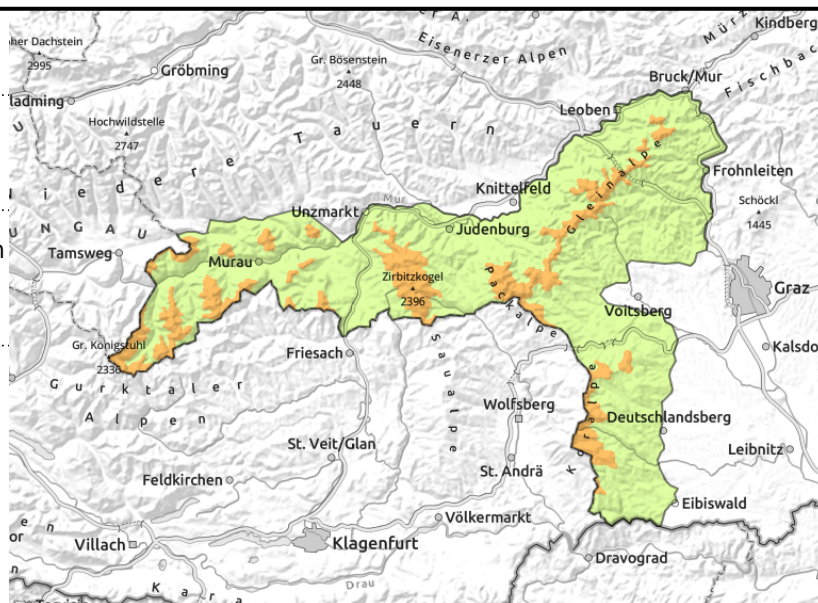
Koralpe, Stub- und Gleinalpe, Seetaler Alpen, Gurktaler Alpen



timberline



behind abrupt discontinuities in the terrain, distant from ridglines



Fresh snowdrifts on north and east-facing slopes

Avalanche danger levels in the Gurktal and Seetal Alps, on Stubalpe and on Koralpe are considerable. Fresh snowdrifts on north and east-facing slopes are the main danger. Icy NW winds will generate new snowdrift accumulations. Avalanche prone locations are found near ridglines and at entries into gullies and bowls. Triggering a slab avalanches is possible even by minimum additional loading. The snowdrift accumulation masses should not be underestimated.

Snowpack structure

Cold NW winds have transported the fresh snow from the most recent bout of precipitation. Bonding to the old snowpack is insufficient. The old snowpack on north-facing slopes is weakened by expansive metamorphosis: persistent weak layer!

Due to forecast winds on Saturday, further snowdrifts are expected. The cold drifts will not bond well with the old snowpack on Saturday.

Weather

Skies on the northern flank of the Alps are heavily overcast, continual snowfall through the night. Particularly from Ausseer Land into Mariazeller Land, large amounts of fresh snow are expected (20-30 cm). In the Murtal and Mürztal, less, but repeated rounds of snowfall are possible. The NW winds will increase in strength, blowing strong in the mountains.

Saturday: heavy cloud cover. Between Totes Gebirge and Hochschwab, continual snowfall. South of Niedere Tauern, only a bit of snowfall. Winds will be strong to stormy from NW. Icy cold in the mountains: at 2000 m, -13 degrees.

Sunday: cloud cover still dominates, some snowfall between Dachstein and Hochschwab. In the afternoon, winds and precipitation will ease, but cloud cover will persist. Cold at high altitudes: at 2000 m, -13 degrees.

Outlook

No significant change in avalanche danger levels

Avalanche problems



Danger ratings

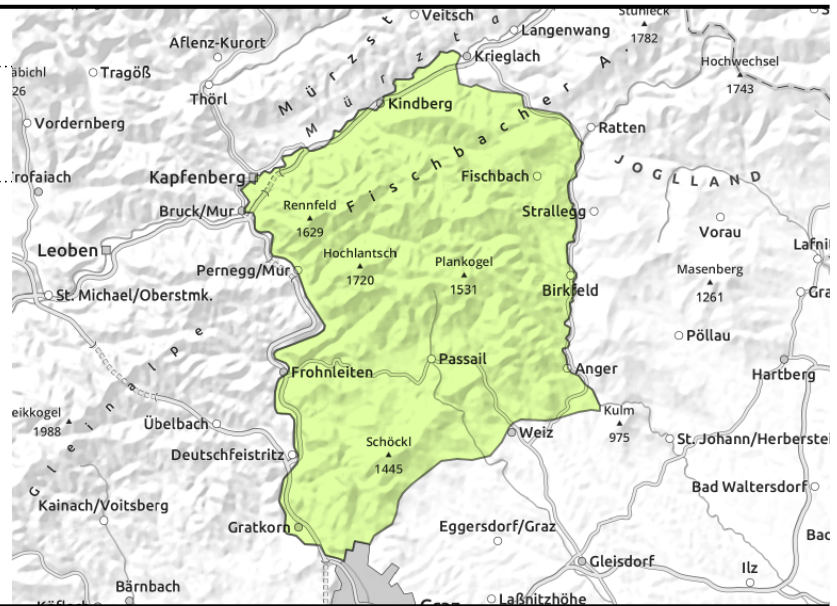
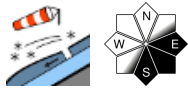


Expositions



Avalanche report for Saturday, 21.01.2023

Westliche Fischbacher Alpen und Grazer Bergland



Fresh snowdrifts on east-facing slopes

Avalanche danger is low. Danger zones lie near ridgelines where there are snowdrifts. Special caution urged on north-facing slopes at high altitudes: a persistent weak layer. A slab release is possible even by large additional loading, small-to-medium avalanches are possible.

Snowpack structure

Snowdrift accumulations lie deposited on E-facing slopes above the treeline atop a hardened old snowpack surface. On north-facing slopes the snowpack is unfavourably layered.

Weather

Skies on the northern flank of the Alps are heavily overcast, continual snowfall through the night. Particularly from Ausseer Land into Mariazeller Land, large amounts of fresh snow are expected (20-30 cm). In the Murtal and Mürztal, less, but repeated rounds of snowfall are possible. The NW winds will increase in strength, blowing strong in the mountains.

Saturday: heavy cloud cover. Between Totes Gebirge and Hochschwab, continual snowfall. South of Niedere Tauern, only a bit of snowfall. Winds will be strong to stormy from NW. Icy cold in the mountains: at 2000 m, -13 degrees.

Sunday: cloud cover still dominates, some snowfall between Dachstein and Hochschwab. In the afternoon, winds and precipitation will ease, but cloud cover will persist. Cold at high altitudes: at 2000 m, -13 degrees.

Outlook

Slight increase in avalanche danger is possible.

Translated by Jeffrey McCabe, www.creativtrans.com

Avalanche problems



Danger ratings



Expositions

