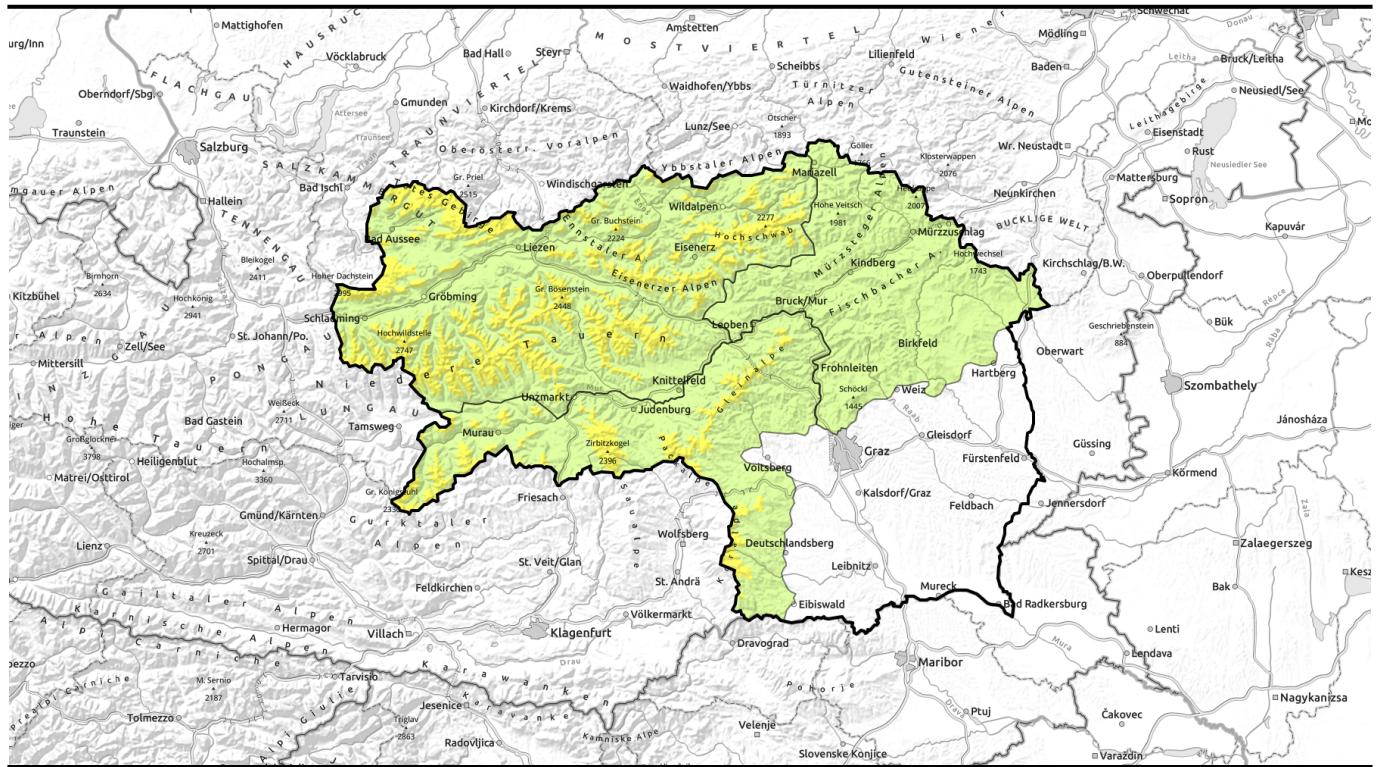

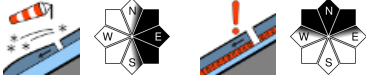






Avalanche report for Thursday, 19.01.2023



Trigger-sensitive snowdrifts at high altitude

	<p>forestline</p>	<p>Schladminger Tauern Nord, Totes Gebirge, Dachsteingebiet, Nördliche Wölzer Tauern, Schladminger Tauern Süd, Südliche Wölzer Tauern, Rottenmanner Tauern, Ennstaler Alpen, Hochschwabgebiet, Eisenerzer Alpen, Seckauer Tauern</p>	
		<p>Mürztaler Alpen, Mürzsteger Alpen, Westliche Fischbacher Alpen und Grazer Bergland, Östliche Fischbacher Alpen und Wechselgebiet</p>	
	<p>timberline</p>	<p>Koralpe, Stub- und Gleinalpe, Seetaler Alpen, Gurktaler Alpen</p>	

Avalanche problems



Danger ratings

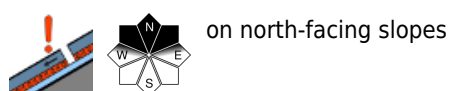
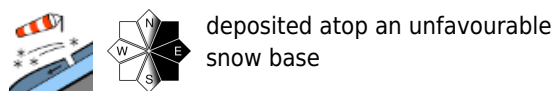
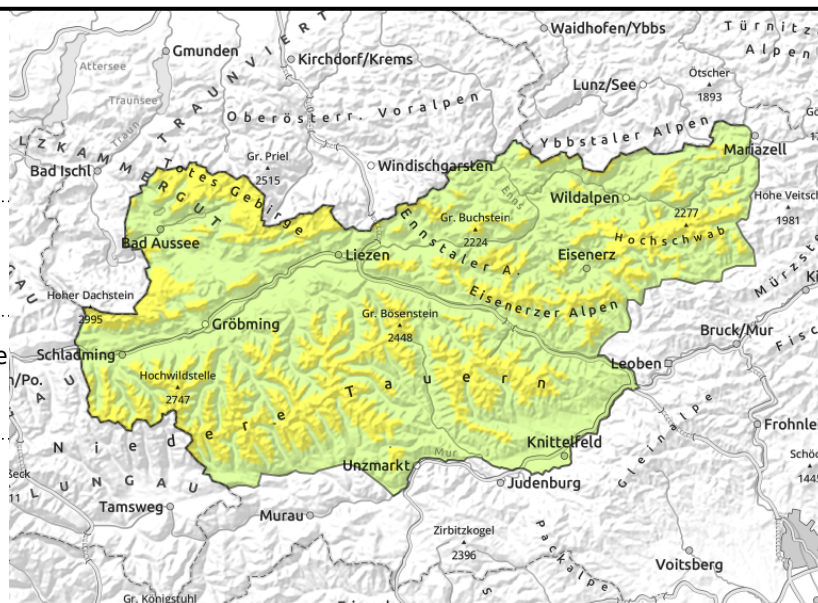


Expositions



Avalanche report for Thursday, 19.01.2023

Schladminger Tauern Nord, Totes Gebirge, Dachsteingebiet, Nördliche Wölzer Tauern, Schladminger Tauern Süd, Südliche Wölzer Tauern, Rottenmanner Tauern, Ennstaler Alpen, Hochschwabgebiet, Eisenerzer Alpen, Seckauer Tauern



Wind-loaded east-facing slopes

Avalanche danger above the treeline is moderate. Danger zones are located in ridgeline terrain and behind abrupt discontinuities in the terrain. Particular caution is urged on high altitude north and east-facing slopes. Fresh snowdrifts have been deposited on top of an unfavourable old snowpack surface (persistent weak layer) on east-facing slopes. The drifts should not be underestimated at high altitudes! A slab release is possible even with minimum additional loading. Caution urged towards fresh cornices, they are easily triggered.

Snowpack structure

The fresh snow has blanketed the surface hoar and the weak layers of the old snowpack surface. In the fundament there are loose, soft weak layers. Analysis has confirmed a sequence of melt-freeze crusts and faceted crystal layers. On sunny slopes the snowpack is hardened and icy. All in all, extremely unfavourable snowpack layering. The fresh drifts which were generated on Thursday are cold and brittle, only poorly bonded with the old snowpack surface.

Weather

Low-pressure front over the Mediterranean, increasing amounts of Arctic air masses from the north: these are the conditions which Styria currently faces, i.e. instable weather on Thursday. Right from the start, heavy cloud, most higher peaks in fog, poor visibility. In the Upper Styrian mountain massifs, light snowfall is possible, in the Koralm regions persistent. Strong NW winds will make for low temperatures: at 2000 m at midday: -11 degrees; at 1500 m; -8 degrees.

Also on Friday, weather conditions in the mountains will be instable. Particularly in Upper Styria, gray skies, on the southern flank of the Alps clouds might disperse somewhat. The strong NW winds will persist, temperatures will drop another notch.

Outlook

It will remain cold, avalanche danger levels are not expected to change.

Avalanche problems



Danger ratings



Expositions

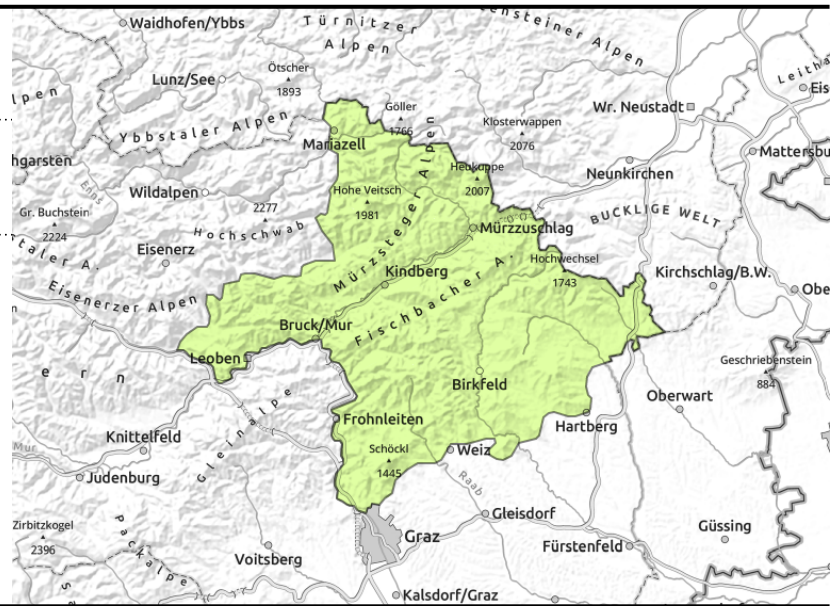


Avalanche report for Thursday, 19.01.2023

Mürztaler Alpen, Mürzsteiger Alpen, Westliche Fischbacher Alpen und Grazer Bergland, Östliche Fischbacher Alpen und Wechselgebiet



near ridgelines



Some fresh snowdrifts on east-facing slopes

Avalanche danger continues to be LOW. Danger zones are found only in isolated cases near ridgelines. Slab avalanches are possible on north and east-facing slopes by large additional loading. Small to medium sized avalanches are possible.

Snowpack structure

Snow depths in this region have persisted at below average levels. The shallow amount of fresh snow blanketed the old snowpack which is poorly layered. Some grass-covered slopes have been covered with fresh snow. At high altitudes there are older snowdrifts on north-facing slopes which have been able to settle somewhat. Due to icy-cold NW winds in the Wechsel region, fresh snowdrifts are expected on east-facing slopes.

Weather

Thursday: heavy cloud from the start, most higher peaks in fog, poor visibility. Some light snowfall which will slacken off in the afternoon. A strong, icy-cold NW wind which will disperse some of the clouds on the southern flank of the Alps in afternoon. At 2000 m at midday: -11 degrees.

Also on Friday, weather conditions in the mountains will be instable. Along the rimline ranges some sunny intervals are possible. The winds will ease, but still be strong and icy-cold, temperatures will drop another notch: -12 degrees at 2000 m.

Outlook

It will remain cold, avalanche danger levels are not expected to change.

Avalanche problems



Danger ratings



Expositions



Avalanche report for Thursday, 19.01.2023

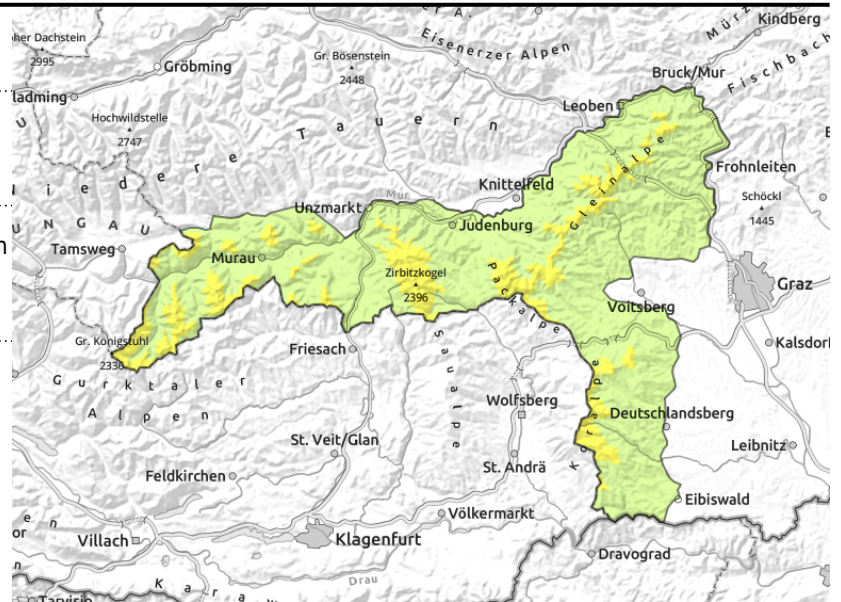
Koralpe, Stub- und Gleinalpe, Seetaler Alpen, Gurktaler Alpen



timberline



behind abrupt discontinuities in the terrain, distant from ridglines



Fresh snowdrifts on north and east-facing slopes

Avalanche danger levels in the Gurktal and Seetal Alps, on Stubalpe and on Koralpe are moderate. Fresh snowdrifts on north and east-facing slopes are the main danger. Icy NW winds will generate new snowdrift accumulations. Avalanche prone locations are found near ridglines and at entries into gullies and bowls. Triggering a slab avalanches is possible even by minimum additional loading. Caution urged towards fresh cornices, they are easily triggered.

Snowpack structure

The snowpack has been able to settle somewhat. The cold NW winds have generated fresh brittle snowdrift accumulations, deposited them on east-facing slopes. Bonding of fresh drifts to the old snowpack is insufficient. The old snowpack in expansively metamorphosed (faceted) on north-facing slopes.

Weather

Thursday: heavy cloud from the start, most higher peaks in fog, poor visibility. Some light snowfall which will slacken off in the afternoon. A strong, icy-cold NW wind which will disperse some of the clouds on the southern flank of the Alps in afternoon. At 2000 m at midday: -11 degrees.

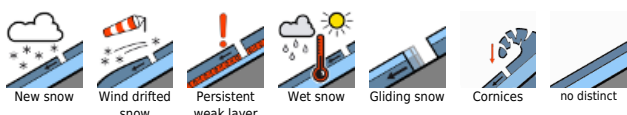
Also on Friday, weather conditions in the mountains will be instable. Along the rimline ranges some sunny intervals are possible. The winds will ease, but still be strong and icy-cold, temperatures will drop another notch: -12 degrees at 2000 m.

Outlook

It will remain cold, avalanche danger levels are not expected to change.

Translated by Jeffrey McCabe, www.creativtrans.com

Avalanche problems



Danger ratings



Expositions

