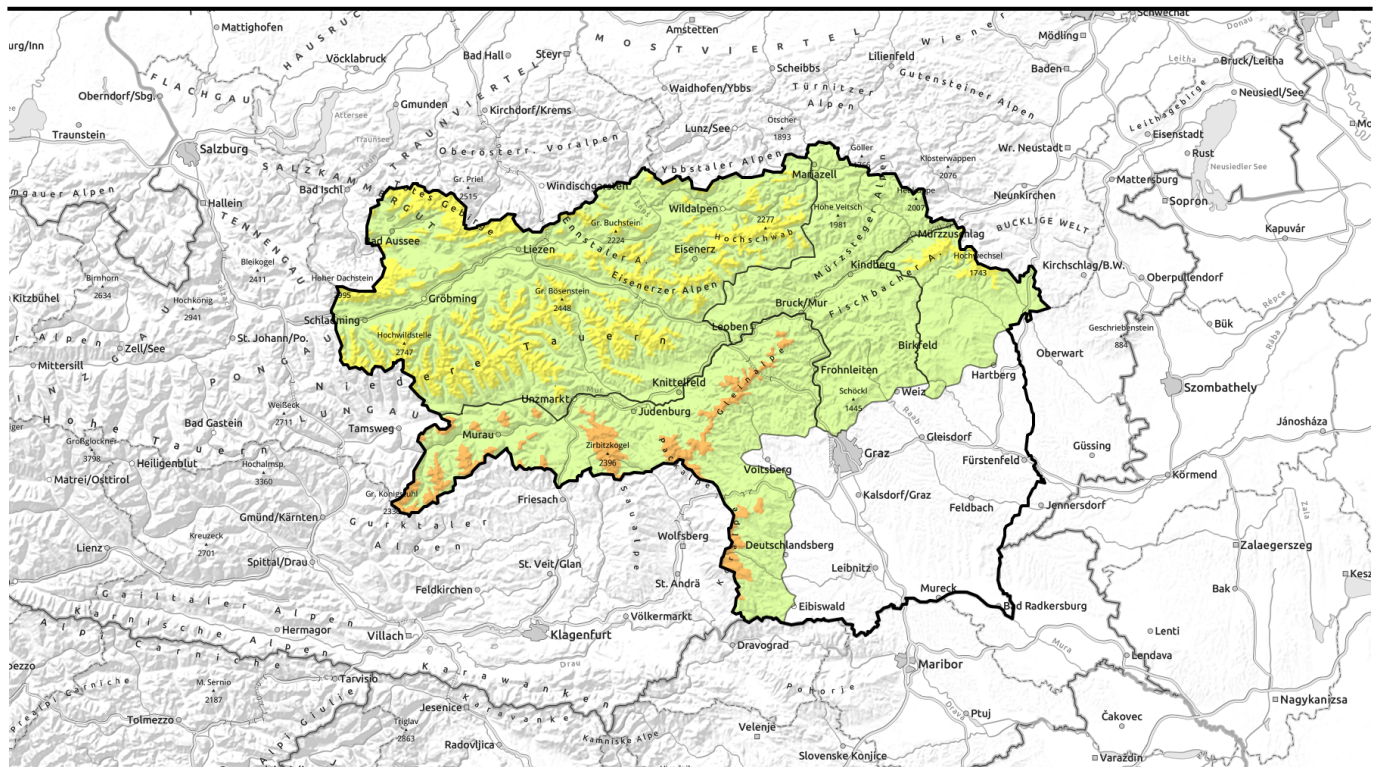



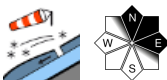

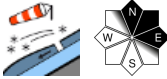




# Avalanche report for Wednesday, 18.01.2023



## Trigger-sensitive snowdrifts at high altitude

	<p>forestline</p>	<p>Schladminger Tauern Nord, Totes Gebirge, Dachsteingebiet, Nördliche Wölzer Tauern, Schladminger Tauern Süd, Südliche Wölzer Tauern, Rottenmanner Tauern, Ennstaler Alpen, Hochschwabgebiet, Eisenerzer Alpen, Seckauer Tauern</p>	
		<p>Mürztaler Alpen, Mürzsteger Alpen, Westliche Fischbacher Alpen und Grazer Bergland</p>	
	<p>forestline</p>	<p>Östliche Fischbacher Alpen und Wechselgebiet</p>	
	<p>timberline</p>	<p>Gurktaler Alpen, Seetaler Alpen, Stub- und Gleinalpe, Koralpe</p>	

### Avalanche problems



### Danger ratings

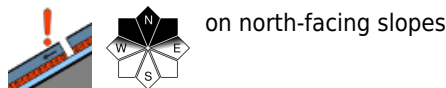
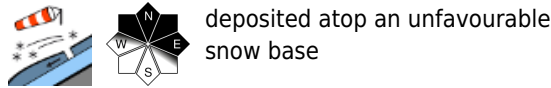
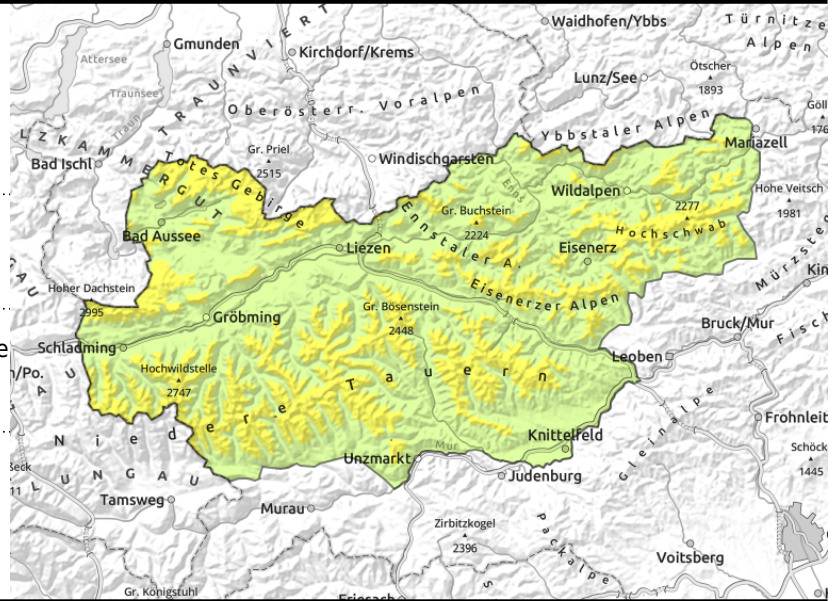


### Expositions



# Avalanche report for Wednesday, 18.01.2023

Schladminger Tauern Nord, Totes Gebirge, Dachsteingebiet, Nördliche Wölzer Tauern, Schladminger Tauern Süd, Südliche Wölzer Tauern, Rottenmanner Tauern, Ennstaler Alpen, Hochschwabgebiet, Eisenerzer Alpen, Seckauer Tauern



## Wind-loaded north-facing slopes

Avalanche danger above the treeline is moderate. Danger zones are located in ridgeline terrain and behind abrupt discontinuities in the terrain. Particular caution is urged on high altitude north-facing slopes. Fresh snowdrifts have been deposited on top of an unfavourable old snowpack surface (persistent weak layer). The drifts should not be underestimated at high altitudes! A slab release is possible even with minimum additional loading. As the wind changes direction from south to northwest, also east-facing slopes will be filled with snowdrift accumulations. Caution urged towards fresh cornices, they are easily triggered.

## Snowpack structure

There was 5-10 cm of fresh snow has blanketed the surface hoar and the weak layers of the old snowpack surface. In the fundament there is a loose, weak layer. Analysis has confirmed a sequence of melt-freeze crusts and faceted crystal layers. On sunny slopes the snowpack is hardened and icy. All in all, extremely unfavourable snowpack layering.

## Weather

On Tuesday night a bit of rainfall/snowfall is anticipated, in the Niedere Tauern and Hochschwab regions a few centimetres of fresh snow is expected. Dachstein and Totes Gebirge will remain without fresh snow. The snowfall level lies at valley floor.

Wednesday: the snowfall will taper off in the morning. In the afternoon clouds will disperse and some sunshine is expected. Westerly winds will reach speeds of 30-50 km/hr. At 2000 m: -8 degrees.

## Outlook

It will remain cold, avalanche danger levels are not expected to change.

### Avalanche problems



### Danger ratings

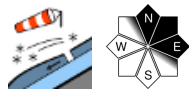


### Expositions

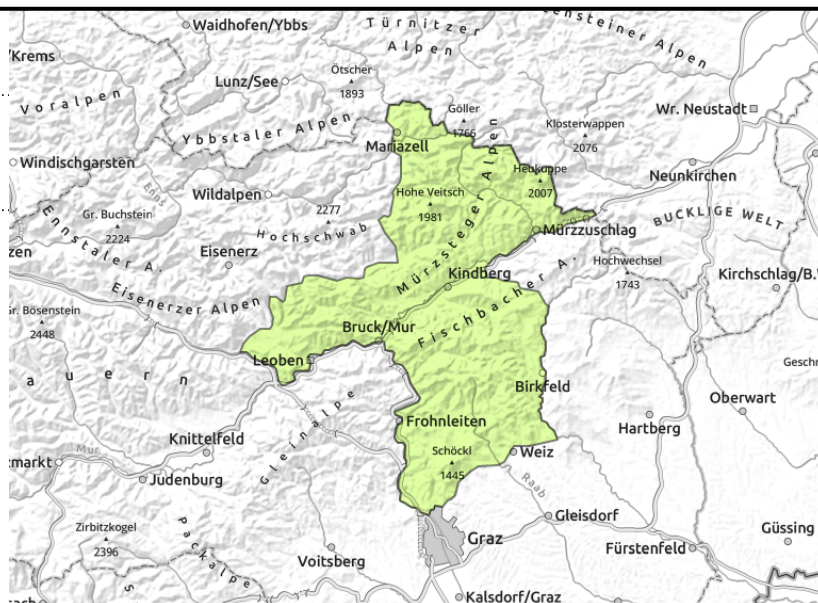


# Avalanche report for **Wednesday, 18.01.2023**

## Mürztaler Alpen, Mürzsteiger Alpen, Westliche Fischbacher Alpen und Grazer Bergland



near ridgelines



## Some fresh snow

Avalanche danger continues to be LOW. Danger zones are found only in isolated cases near ridgelines. Slab avalanches are possible on north-facing slopes by large additional loading.

## Snowpack structure

Prior to this bout of precipitation, snow depths in this region were extremely below average, the ground was often bare of snow. Only in high altitude zones was the old snow able to persist. The old snowpack is layer in extremely unfavourable ways. Some grass-covered slopes have been covered with fresh snow.

## Weather

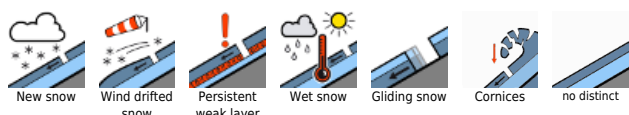
On Tuesday night a bit of rainfall/snowfall is anticipated.

Wednesday: the snowfall will taper off in the morning. In the afternoon clouds will disperse and some sunshine is expected. Westerly winds will reach speeds of 30-50 km/hr. At 2000 m: -8 degrees.

## Outlook

It will remain cold, avalanche danger levels are not expected to change.

### Avalanche problems



### Danger ratings

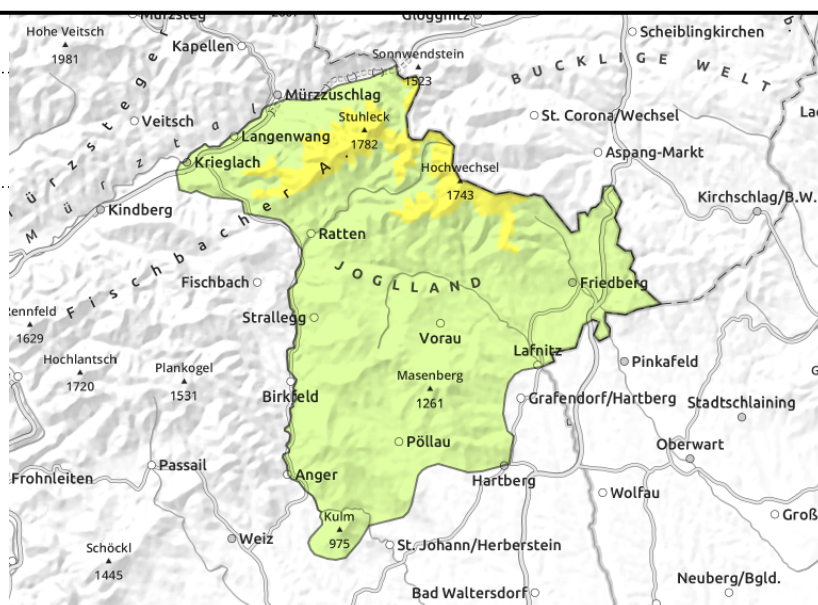
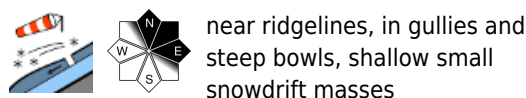


### Expositions



# Avalanche report for Wednesday, 18.01.2023

## Östliche Fischbacher Alpen und Wechselgebiet



## Fresh snowdrifts above the timberline

In the Wechsel region moderate avalanche danger prevails above the treeline. Danger zones are freshly generated snowdrift accumulations in extended north-facing terrain on ridgeline slopes and behind abrupt discontinuities in the terrain, particularly in steep entries into gullies and bowls, where snowdrift masses can often be triggered even by minimum additional loading and generate a slab avalanche, although not large-sized releases.

## Snowpack structure

Brisk southerly winds have transported the fresh snow to north-facing slopes. Bonding of fresh snow to the old snowpack is insufficient. At intermediate and low altitudes the fresh snow lies deposited atop a fragmented snowpack fundament, on sunny slopes on bare ground.

## Weather

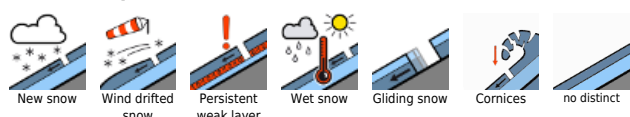
On Tuesday night a bit of rainfall/snowfall is anticipated, in the Niedere Tauern and Hochschwab regions a few centimetres of fresh snow is expected. Dachstein and Totes Gebirge will remain without fresh snow. The snowfall level lies at valley floor.

Wednesday: the snowfall will taper off in the morning. In the afternoon clouds will disperse and some sunshine is expected. Westerly winds will reach speeds of 30-50 km/hr. At 2000 m: -8 degrees.

## Outlook

It will remain cold, avalanche danger levels are not expected to change.

### Avalanche problems



### Danger ratings

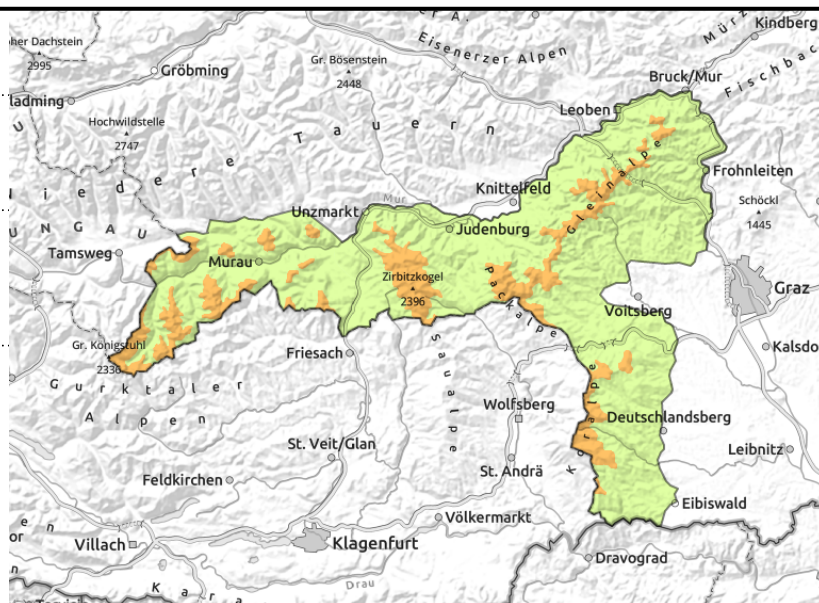
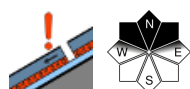
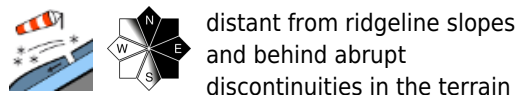


### Expositions



# Avalanche report for Wednesday, 18.01.2023

## Gurktaler Alpen, Seetaler Alpen, Stub- und Gleinalpe, Koralpe



## Snowdrift problem. Caution urged towards fresh cornices.

Avalanche danger levels in the Gurktal and Seetal Alps, on Stubalpe and on Koralpe are considerable. Fresh snowdrifts on north-facing slopes are the main danger. Avalanche prone locations are found near ridgelines and at entries into gullies and bowls. Triggering a slab avalanches is possible even by minimum additional loading. Above the treeline on shady slopes, large-sized avalanches can be triggered. Caution urged towards fresh cornices, they are easily triggered.

### Snowpack structure

The S/W winds have transported the fresh snow of Monday and Tuesday. The drifts lie deposited atop a weak old snowpack surface. There is a loose layer inside the fundament which is a potential weak layer. Blanketed surface hoar and faceted crystals are weakening the snowpack fundament.

### Weather

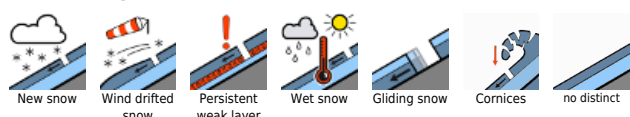
On Tuesday night a bit of rainfall/snowfall is anticipated, between Turracher Höhe and Koralpe, up to 15 cm is expected. The snowfall level lies at valley floor.  
 Wednesday: the snowfall will taper off in the morning. In the afternoon clouds will disperse and some sunshine is expected. Westerly winds will reach speeds of 30-50 km/hr. At 2000 m: -8 degrees.

### Outlook

It will remain cold, avalanche danger levels are not expected to change.

Translated by Jeffrey McCabe, [www.creativtrans.com](http://www.creativtrans.com)

### Avalanche problems



### Danger ratings



### Expositions

