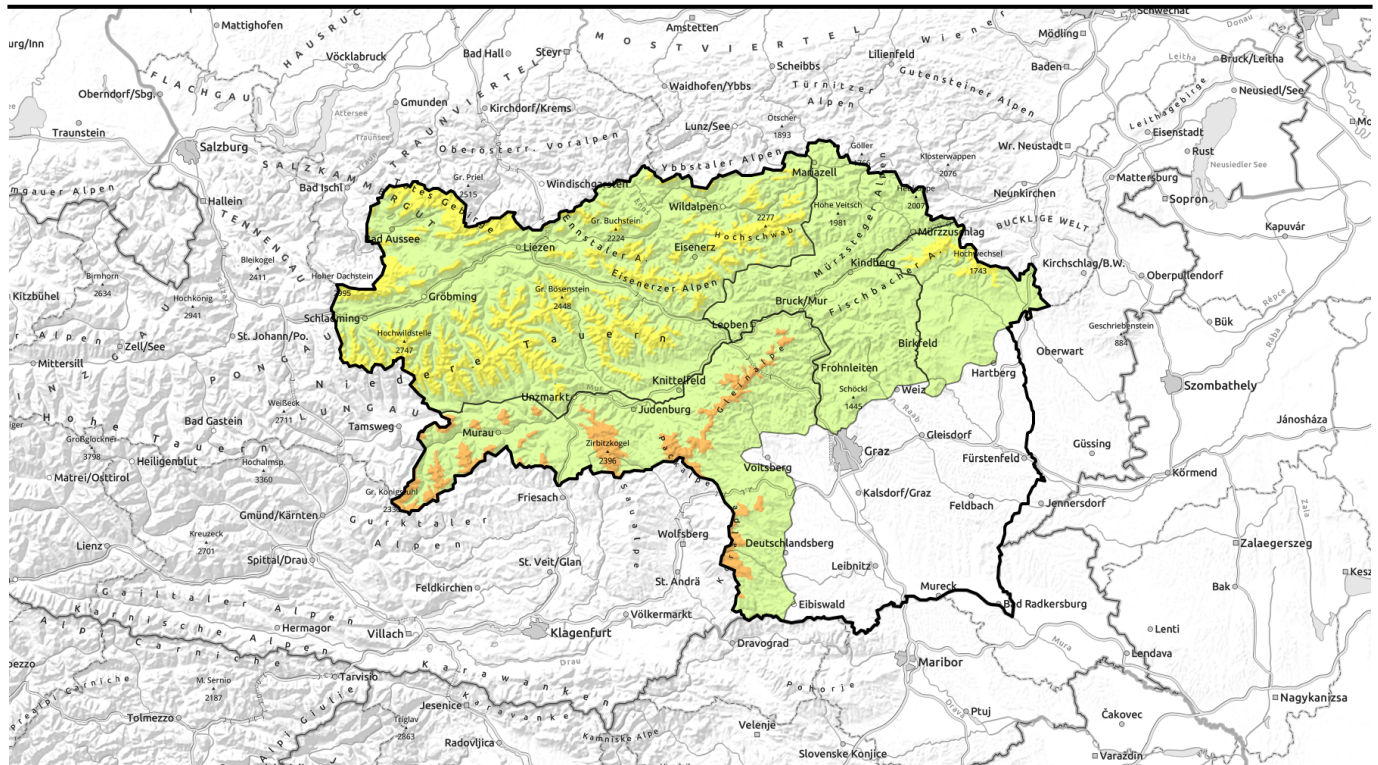



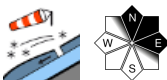

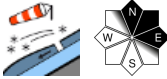




Avalanche report for Tuesday, 17.01.2023



Snowdrifts! Wind-loaded north and east facing slopes.

	<p>forestline</p>	<p>Schladminger Tauern Nord, Totes Gebirge, Dachsteingebiet, Nördliche Wölzer Tauern, Schladminger Tauern Süd, Südliche Wölzer Tauern, Rottenmanner Tauern, Ennstaler Alpen, Hochschwabgebiet, Eisenerzer Alpen, Seckauer Tauern</p>	
		<p>Mürztaler Alpen, Mürzsteger Alpen, Westliche Fischbacher Alpen und Grazer Bergland</p>	
	<p>forestline</p>	<p>Östliche Fischbacher Alpen und Wechselgebiet</p>	
	<p>timberline</p>	<p>Gurktaler Alpen, Seetaler Alpen, Stub- und Gleinalpe, Koralpe</p>	

Avalanche problems



Danger ratings

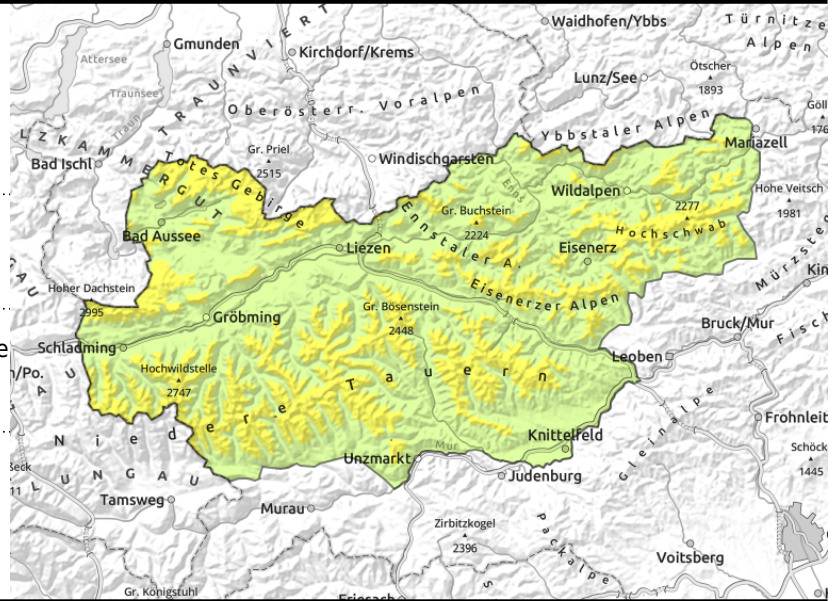


Expositions



Avalanche report for Tuesday, 17.01.2023

Schladminger Tauern Nord, Totes Gebirge, Dachsteingebiet, Nördliche Wölzer Tauern, Schladminger Tauern Süd, Südliche Wölzer Tauern, Rottenmanner Tauern, Ennstaler Alpen, Hochschwabgebiet, Eisenerzer Alpen, Seckauer Tauern



forestline



deposited atop an unfavourable snow base



on north-facing slopes

Wind-loaded north-facing slopes

Avalanche danger above the treeline is moderate. Danger zones are located in ridgeline terrain and behind abrupt discontinuities in the terrain. Particular caution is urged on high altitude north-facing slopes. Fresh snowdrifts have been deposited on top of an unfavourable old snowpack surface (persistent weak layer). The drifts should not be underestimated at high altitudes! A slab release is possible even with minimum additional loading. As a rule, magnitude 2 releases are expected (but that is enough to be buried in snow masses).

Snowpack structure

There was 5-10 cm of fresh snow registered, blanketed with surface hoar, atop a weakly-layered old snowpack surface. In the fundament there is a sequence of melt-freeze crusts and faceted crystal layers. On sunny slopes the snowpack is hardened and icy. All in all, extremely unfavourable snowpack layering.

Weather

On Tuesday clouds and fog will temporarily disperse, a bit of sunshine is expected. In the afternoon, cloud cover will move in again, shrouding the peaks in the southwest. During the afternoon, light snowfall will set in. Winds in early morning will be northwesterly, as of midday southwesterly. At 2000 m: -6 degrees; on Tuesday night, a bit more fresh snow from the southwest.

Outlook

Over the next few days, variable wind directions are expected: from NW to SW. On Wednesday, more fresh snow.

Avalanche problems



Danger ratings



Expositions

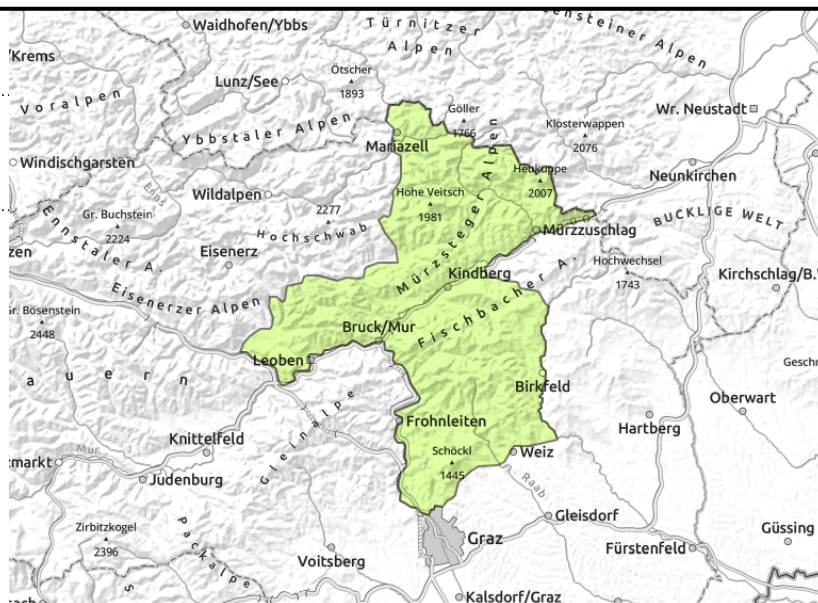


Avalanche report for Tuesday, 17.01.2023

Mürztaler Alpen, Mürzsteiger Alpen, Westliche Fischbacher Alpen und Grazer Bergland



kammnah



Fresh snowdrifts on north-facing slopes

Avalanche danger is LOW. Danger zones are found only in isolated cases near ridgelines. Slab avalanches are possible on north-facing slopes by large additional loading.

Snowpack structure

Prior to this bout of precipitation, snow depths in this region were extremely below average, the ground was often bare of snow. Only in high altitude zones was the old snow able to persist. The old snowpack is layer in extremely unfavourable ways. From Saturday to Sunday, surface hoar formed. This will now be blanketed by fresh snow and new snowdrifts.

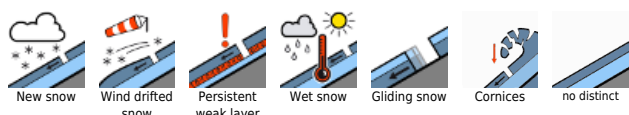
Weather

On Tuesday clouds and fog will temporarily disperse, a bit of sunshine is expected. In the afternoon, cloud cover will move in again, shrouding the peaks in the southwest. During the afternoon, light snowfall will set in. Winds in early morning will be northwesterly, as of midday southwesterly. At 2000 m: -6 degrees; on Tuesday night, a bit more fresh snow from the southwest.

Outlook

Over the next few days, variable wind directions are expected: from NW to SW. On Wednesday, more fresh snow.

Avalanche problems



Danger ratings

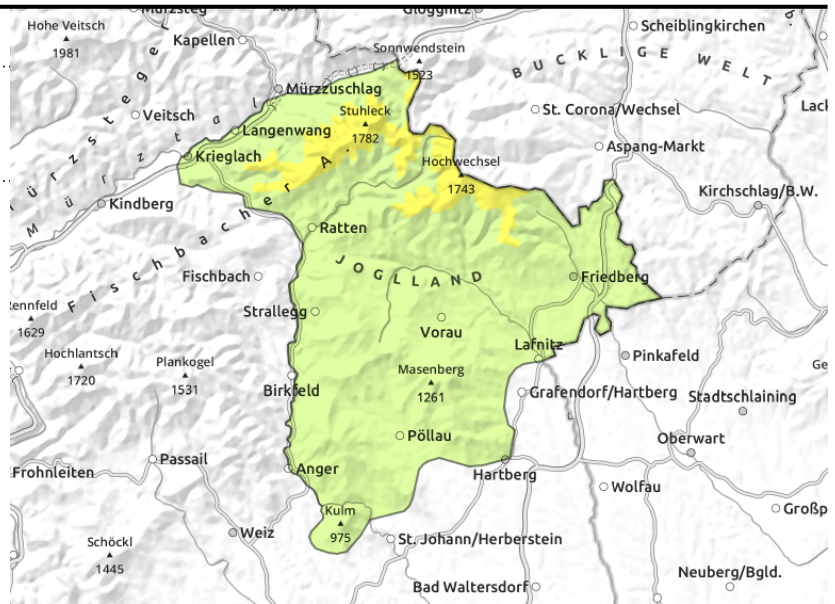
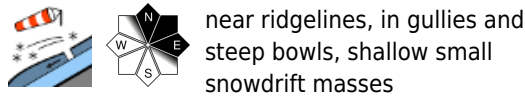


Expositions



Avalanche report for Tuesday, 17.01.2023

Östliche Fischbacher Alpen und Wechselgebiet



Fresh snowdrifts above the timberline

In the Wechsel region moderate avalanche danger prevails above the treeline. Danger zones are freshly generated snowdrift accumulations in extended north-facing terrain on ridgeline slopes and behind abrupt discontinuities in the terrain, particularly in steep entries into gullies and bowls, where snowdrift masses can often be triggered even by minimum additional loading and generate a slab avalanche, although probably small-sized.

Snowpack structure

Brisk southerly winds have transported the fresh snow (about 10 cm) to north-facing slopes. Bonding of fresh snow to the old snowpack is insufficient. At intermediate and low altitudes the fresh snow lies deposited atop a fragmented snowpack fundament, on sunny slopes on bare ground.

Weather

On Tuesday clouds and fog will temporarily disperse, a bit of sunshine is expected. In the afternoon, cloud cover will move in again, shrouding the peaks in the southwest. During the afternoon, light snowfall will set in. Winds in early morning will be northwesterly, as of midday southwesterly. At 2000 m: -6 degrees; on Tuesday night, a bit more fresh snow from the southwest.

Outlook

Initially no change in avalanche danger levels is expected. Starting on Wednesday, fresh snowfall can intensify the snowdrift problem.

Avalanche problems



Danger ratings

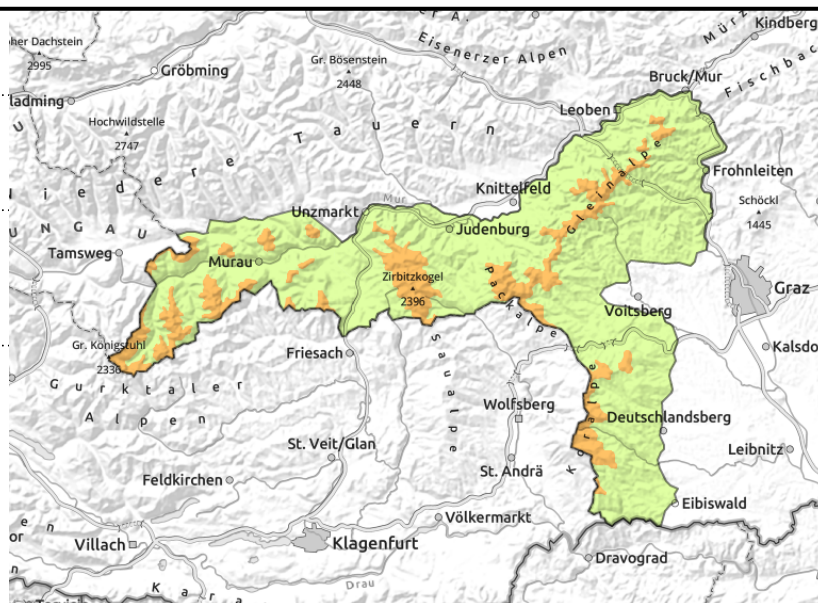
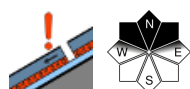
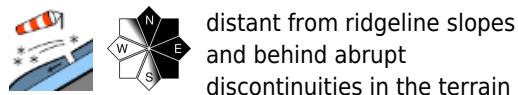


Expositions



Avalanche report for Tuesday, 17.01.2023

Gurktaler Alpen, Seetaler Alpen, Stub- und Gleinalpe, Koralpe



Caution urged on high altitude north-facing slopes - Snowdrift problem

Avalanche danger levels in the Gurktal and Seetal Alps, on Stubalpe and on Koralpe are considerable. Fresh snowdrifts on north-facing slopes are the main danger. Avalanche prone locations are found near ridgelines and at entries into gullies and bowls. Triggering a slab avalanches is possible even by minimum additional loading. Above the treeline on shady slopes, large-sized avalanches can be triggered.

Snowpack structure

In the Gurktal and Seetal Alps, up to 35 cm of fresh snow has been registered. Near the Koralpe there was 20 cm of fresh snow. Southerly winds have transported the fresh snow to north-facing slopes, it lies deposited atop a weak old snowpack surface. Blanketed surface hoar and faceted crystals are weakening the snowpack fundament.

Weather

On Tuesday clouds and fog will temporarily disperse, a bit of sunshine is expected. In the afternoon, cloud cover will move in again, shrouding the peaks in the southwest. During the afternoon, light snowfall will set in. Winds in early morning will be northwesterly, as of midday southwesterly. At 2000 m: -6 degrees; on Tuesday night, a bit more fresh snow from the southwest.

Outlook

Initially no change in avalanche danger levels is expected. Starting on Wednesday, fresh snowfall can intensify the snowdrift problem.

Translated by Jeffrey McCabe, www.creativtrans.com

Avalanche problems



Danger ratings



Expositions

