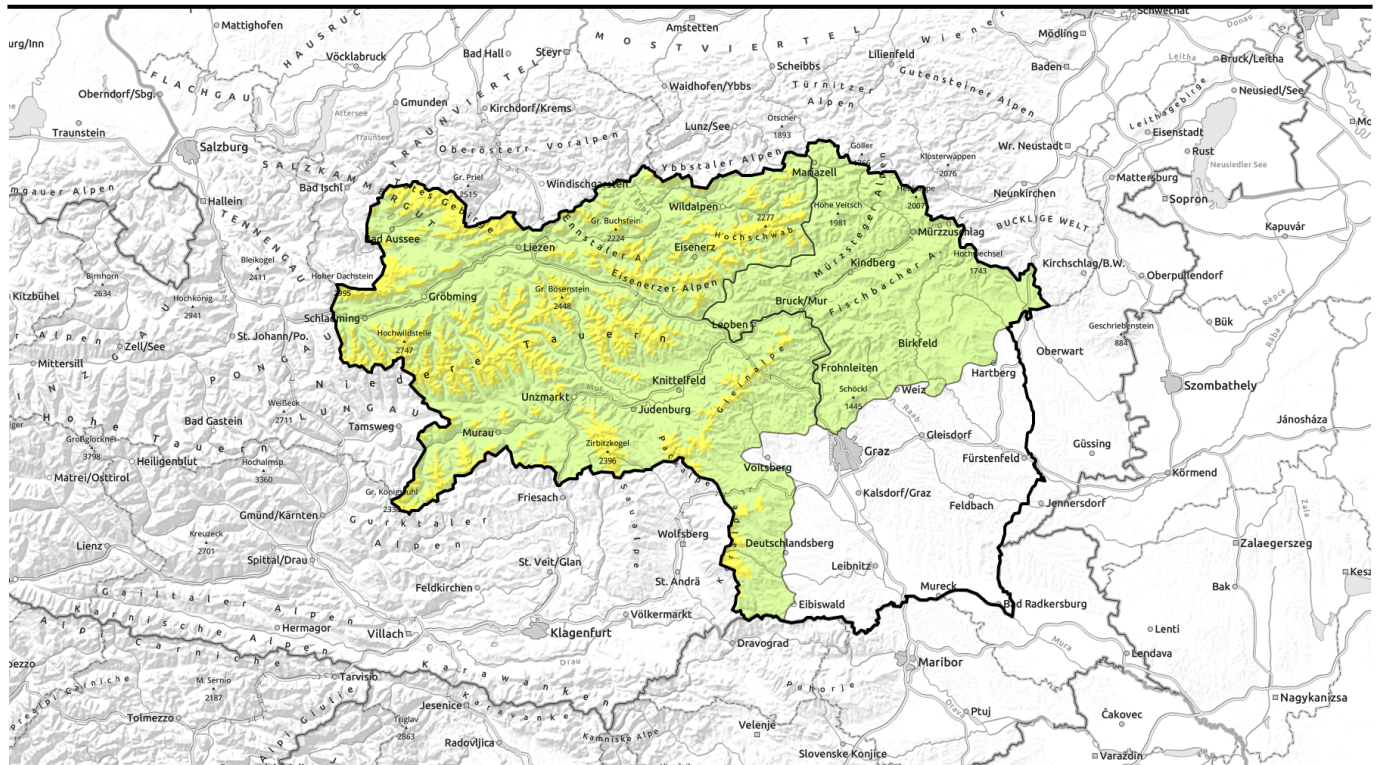



# Avalanche report for Monday, 16.01.2023




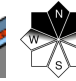



## Wind-loaded north-facing slopes. Fresh fallen snow.



2  
1 forestline




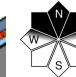
Schladminger Tauern Nord, Totes Gebirge, Dachsteingebiet, Nördliche Wölzer Tauern, Rottenmanner Tauern Süd, Gurktaler Alpen, Südliche Wölzer Tauern, Rottenmanner Tauern, Ennstaler Alpen, Hochschwabgebiet, Eisenerzer Alpen, Seckauer Tauern, Seetaler Alpen, Koralpe, Stub- und Gleinalpe



1

Mürztaler Alpen, Östliche Fischbacher Alpen und Wechselgebiet, Westliche Fischbacher Alpen und Grazer Bergland, Mürztsteiger Alpen

### Avalanche problems



### Danger ratings



### Expositions



# Avalanche report for Monday, 16.01.2023

Schladminger Tauern Nord, Totes Gebirge, Dachsteingebiet, Nördliche Wölzer Tauern, Schladminger Tauern Süd, Gurktaler Alpen, Südliche Wölzer Tauern, Rottenmanner Tauern, Ennstaler Alpen, Hochschwabgebiet, Eisenerzer Alpen, Seckauer Tauern, Seetaler Alpen, Korralpe, Stub- und Gleinalpe



forestline



deposited atop an unfavourable snow base



on north-facing slopes

## Fresh snow in Styria's southern regions. Snowdrifts on north-facing slopes.

Avalanche danger above the treeline is moderate. Danger zones are located in ridgeline terrain and behind abrupt discontinuities in the terrain. Particular caution is urged on high altitude north-facing slopes. Fresh snowdrifts have been deposited on top of an unfavourable old snowpack surface (persistent weak layer). The drifts should not be underestimated at high altitudes! A slab release is possible even with minimum additional loading. As a rule, magnitude 2 releases are expected (but that is enough to be buried in snow masses).

### Snowpack structure

On Saturday night, surface hoar formed at high altitudes. The old snowpack shows pronounced expansively metamorphosed (faceted) layers on north facing slopes at high altitudes. In the fundament there is a sequence of melt-freeze crusts and faceted crystal layers. On sunny slopes the snowpack is hardened and icy. All in all, extremely unfavourable snowpack layering. The old snow will soon be blanketed by fresh snow and snowdrifts.

### Weather

On Sunday night, a perturbation will take hold. In the southern mountain massifs, intensive snowfall is expected. From Turrach to Korralpe: up to 25 cm of fresh snow expected. In Niedere Tauern: up to 15 cm. The snowfall level will descend down to valley level. In Styria's northern regions there will be very little fresh snow. Temperatures will drop during the night: at 2000 m, -7 degrees.

Monday: weather conditions will improve. Clouds in Upper Styria will disperse, a few hours of sunshine are expected, particularly in the Northern Alps. Foehn-southerly wind will blow over the ridges. Along the rimline ranges, a bit of snowfall until early afternoon, then dry conditions and dispersed clouds.

### Outlook

Over the next few days, variably shifting wind directions (NW to SW). On Wednesday, more fresh snowfall. A further increase in avalanche danger is highly likely.

#### Avalanche problems



#### Danger ratings



#### Expositions

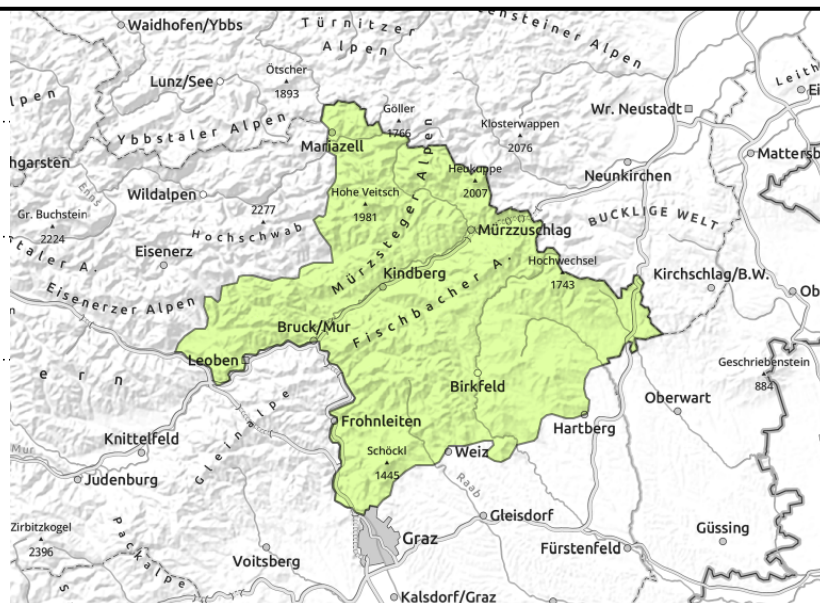


# Avalanche report for Monday, 16.01.2023

**Mürztaler Alpen, Östliche Fischbacher Alpen und Wechselgebiet, Westliche Fischbacher Alpen und Grazer Bergland, Mürzsteiger Alpen**



kammnah



## Fresh snowdrifts on north-facing slopes

Avalanche danger is LOW. Danger zones are found only in isolated cases near ridgelines. Slab avalanches are possible on north-facing slopes by large additional loading.

## Snowpack structure

Prior to this bout of precipitation, snow depths in this region were extremely below average, the ground was often bare of snow. Only in high altitude zones was the old snow able to persist. The old snowpack is layer in extremely unfavourable ways. From Saturday to Sunday, surface hoar formed. This will now be blanketed by fresh snow and new snowdrifts.

## Weather

On Sunday night, a perturbation will take hold. In the southern mountain massifs, intensive snowfall is expected. From Turrach to Koralpe: up to 25 cm of fresh snow expected. In Niedere Tauern: up to 15 cm. The snowfall level will descend down to valley level. In Styria's northern regions there will be very little fresh snow. Temperatures will drop during the night: at 2000 m, -7 degrees.

Monday: weather conditions will improve. Clouds in Upper Styria will disperse, a few hours of sunshine are expected, particularly in the Northern Alps. Foehn-southerly wind will blow over the ridges. Along the rimline ranges, a bit of snowfall until early afternoon, then dry conditions and dispersed clouds.

## Outlook

Over the next few days, variably shifting wind directions (NW to SW). On Wednesday, more fresh snowfall. A further increase in avalanche danger is highly likely.

Translated by Jeffrey McCabe, [www.creativtrans.com](http://www.creativtrans.com)

### Avalanche problems



New snow



Wind drifted snow



Persistent weak layer



Wet snow



Gliding snow



Cornices



no distinct

### Danger ratings



1

low



2

moderate



3

considerable



4

high



5

very high

### Expositions

