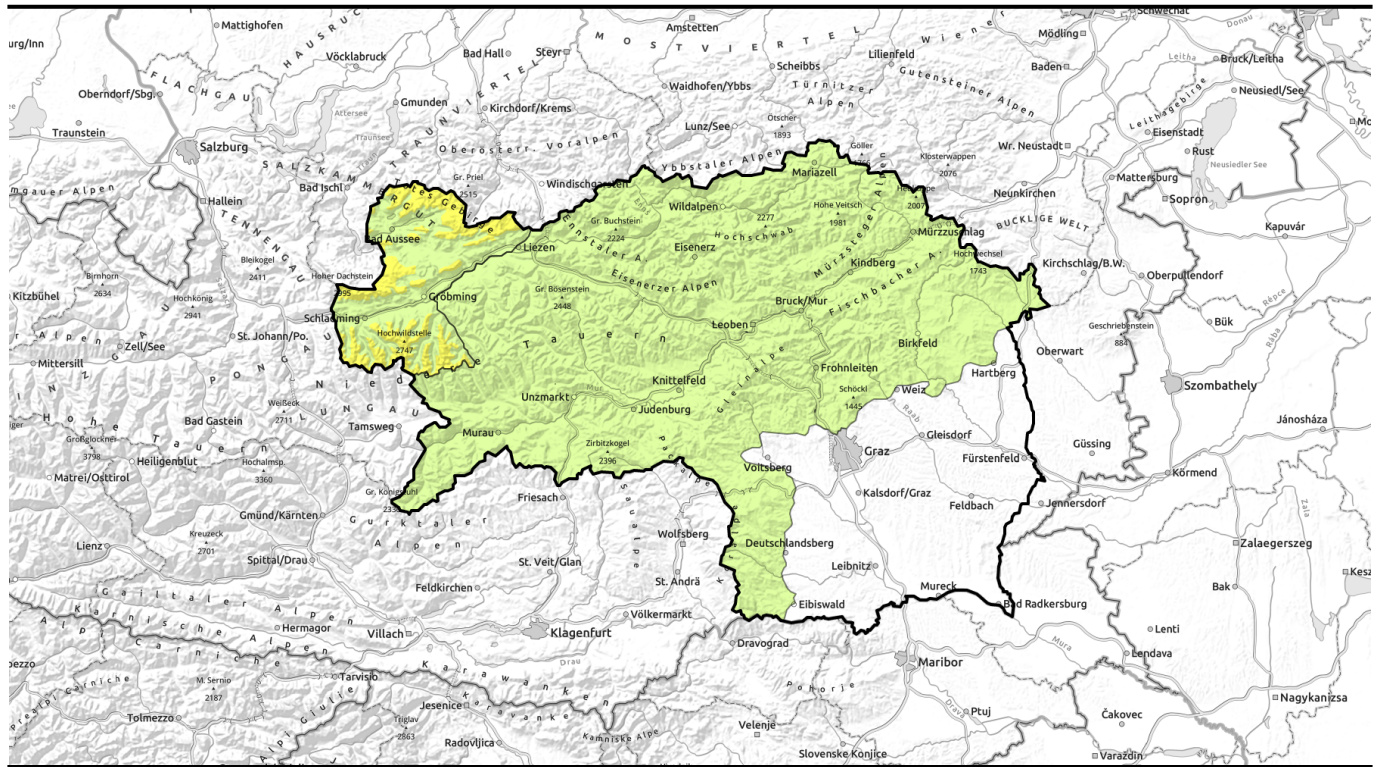


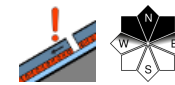
Avalanche report for Sunday, 15.01.2023



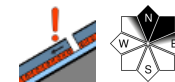
Persistent weak layer on north-facing slopes



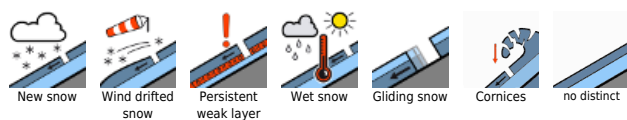
Schladminger Tauern Nord, Totes Gebirge, Dachsteingebiet



Mürzteger Alpen, Mürztaler Alpen, Östliche Fischbacher Alpen und Wechselgebiet, Westliche Fischbacher Alpen und Grazer Bergland, Stub- und Gleinalpe, Korralpe, Seetaler Alpen, Gurktaler Alpen, Schladminger Tauern Süd, Südliche Wölzer Tauern, Nördliche Wölzer Tauern, Rottenmanner Tauern, Ennstaler Alpen, Hochschwabgebiet, Eisenerzer Alpen, Seckauer Tauern



Avalanche problems



Danger ratings

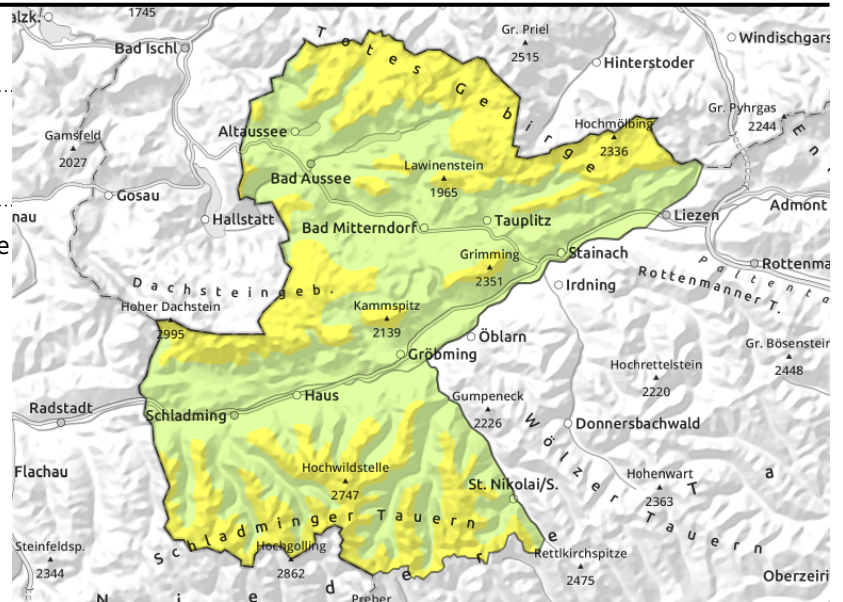
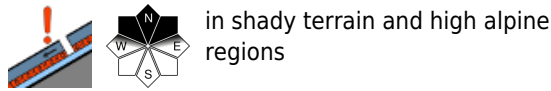


Expositions



Avalanche report for Sunday, 15.01.2023

Schladminger Tauern Nord, Totes Gebirge, Dachsteingebiet



Persistent weak layer on shady high-altitude slopes continues

Above 2300 m, moderate danger prevails, below that altitude danger is low. Main problem: potential weak layers inside the old snowpack. Danger zones are located particularly on north-facing slopes at entries to gullies and bowls and in transitions from shallow to deep snow. Isolated whumpf noises are indicators of this danger. Weak layers inside the old snowpack can trigger from large additional loading. On steep wind-loaded slopes, naturally triggered glide-snow avalanches cannot be ruled out.

Snowpack structure

The expansive metamorphosis inside the old snowpack continues, the weak layers are becoming more pronounced particularly on shady slopes. The snowdrift accumulations deposited on top of those layers are well bonded and, particularly on south-facing slopes, a melt-freeze crust is forming which is not always capable of bearing loads. Due to solar radiation, the melt-freeze encrusted snowpack rapidly forfeits its firmness. In the early morning the snowpack surface is melt-freeze encrusted due to outgoing nocturnal radiation.

Weather

On Sunday, intermediate altitude clouds will disperse, sunshine will prevail nearly everywhere. In the afternoon in the Northern Alps and along the Carinthian border, skies will become gray, the clouds descend, a cold front will bring initial snow showers to the northern flank of the Alps. Thereupon the wind will shift to northwesterly, temperatures recede. At 2000 m at midday: still at +2 °C, thereafter temperatures will drop palpably.

Between Sunday afternoon and Monday morning, 10-20 cm of fresh snow are anticipated. On Monday the situation will calm, sunshine will prevail.

Outlook

On Monday, an increase in avalanche danger levels is expected. Winds from the south will be depositing drifts on north-facing slopes...and a persistent weak layer also prevails here. Special caution is urged on Monday on north-facing slopes.

Avalanche problems



Danger ratings



Expositions



Avalanche report for Sunday, 15.01.2023

Mürzsteiger Alpen, Mürztaler Alpen, Östliche Fischbacher Alpen und Wechselgebiet, Westliche Fischbacher Alpen und Grazer Bergland, Stub- und Glainalpe, Korralpe, Seetaler Alpen, Gurktaler Alpen, Schladminger Tauern Süd, Südliche Wölzer Tauern, Nördliche Wölzer Tauern, Rottenmanner Tauern, Ennstaler Alpen, Hochschwabgebiet, Eisenerzer Alpen, Seckauer Tauern



in shady terrain and high alpine regions

Low avalanche danger, very little snow

Avalanche danger is LOW. Danger zones are found only in isolated cases on shady high altitude slopes, where potential weak layers inside the snowpack can be triggered.

Snowpack structure

The expansive metamorphosis inside the old snowpack continues slowly, the weak layers are becoming more pronounced particularly on shady slopes. The snow on south-facing slopes will become moist and soft during the course of the day. Thus, this uppermost layer can forfeit its firmness on steep slopes. In general the snow depths are extremely below average.

Weather

On Sunday, intermediate altitude clouds will disperse, sunshine will prevail nearly everywhere. In the afternoon in the Northern Alps and along the Carinthian border, skies will become gray, the clouds descend, a cold front will bring initial snow showers to the northern flank of the Alps. Thereupon the wind will shift to northwesterly, temperatures recede. At 2000 m at midday: still at +2 °C, thereafter temperatures will drop palpably.

Between Sunday afternoon and Monday morning, 10-20 cm of fresh snow are anticipated. On Monday the situation will calm, sunshine will prevail.

Outlook

On Monday, an increase in avalanche danger levels is expected. Winds from the south will be depositing drifts on north-facing slopes...and a persistent weak layer also prevails here. Special caution is urged on Monday on north-facing slopes.

Translated by Jeffrey McCabe, www.creativtrans.com

Avalanche problems



Danger ratings



Expositions

