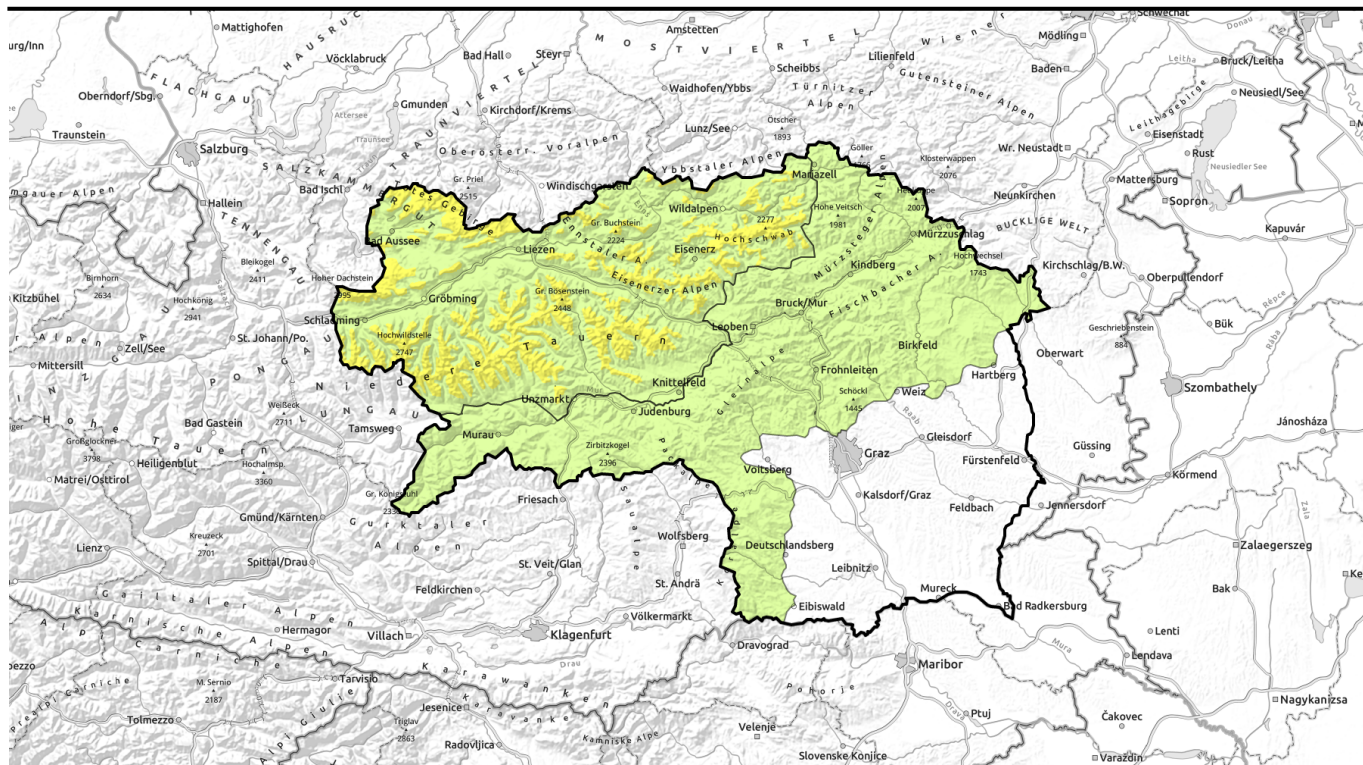
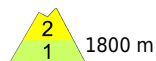


Avalanche report for Thursday, 12.01.2023

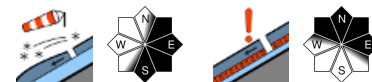


Snowdrift accumulations prone to triggering at high altitudes

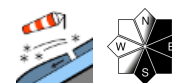


1800 m

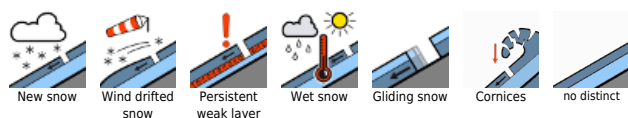
Schladminger Tauern Nord, Nördliche Wölzer Tauern, Rottenmanner Tauern, Ennstaler Alpen, Hochschwabgebiet, Eisenerzer Alpen, Südliche Wölzer Tauern, Schladminger Tauern Süd, Seckauer Tauern, Totes Gebirge, Dachsteingebiet



Mürzsteiger Alpen, Mürztaler Alpen, Östliche Fischbacher Alpen und Wechselgebiet, Westliche Fischbacher Alpen und Grazer Bergland, Stub- und Gleinalpe, Korralpe, Seetaler Alpen, Gurktaler Alpen



Avalanche problems



Danger ratings

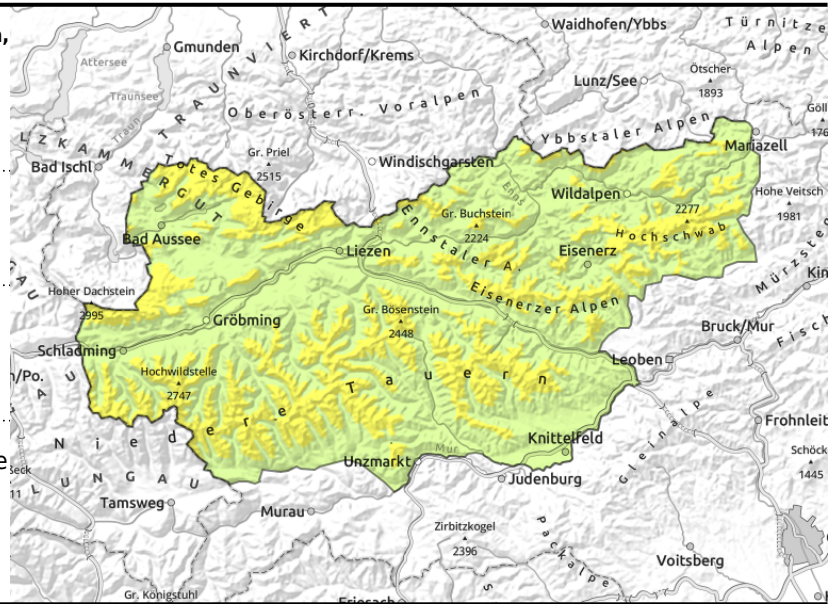
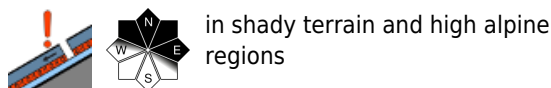
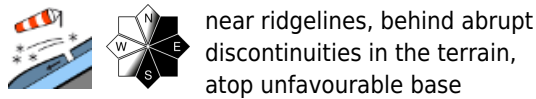


Expositions



Avalanche report for Thursday, 12.01.2023

Schladminger Tauern Nord, Nördliche Wölzer Tauern, Rottenmanner Tauern, Ennstaler Alpen, Hochschwabgebiet, Eisenerzer Alpen, Südliche Wölzer Tauern, Schladminger Tauern Süd, Seckauer Tauern, Totes Gebirge, Dachsteingebiet



Moderate avalanche danger. Trigger-sensitive snowdrifts at high altitudes.

Above 1800 m, moderate danger prevails, below that altitude danger is low. Main problem: fresh snowdrifts, near ridgelines and behind abrupt discontinuities in the terrain, which can be triggered even by minimum additional loading. Danger zones are located particularly at entries to gullies and bowls and in transitions from shallow to deep snow. A slab on shady slopes can fracture down to more deeply embedded layers inside the snowpack and attain medium size. Caution urged especially on south-facing slopes where naturally triggered loose-snow or glide-snow avalanches can release during the course of the day.

Snowpack structure

The fresh snow of recent days and on Wednesday night was transported to extended east-facing terrain, where snowdrifts accumulated in gullies and bowls, behind abrupt discontinuities in the terrain, often quite deep ones which are poorly bonded with the old snowpack. There are from place to place weak layers or graupel inside the old snowpack. Furthermore, on shady slopes there are faceted layers evident. At intermediate altitudes the snow depths are far below average.

Weather

On Wednesday night, a front will bring snowfall above 1400 m. In early morning hours the clouds will swiftly disperse, but as of midday, cloud cover will move in once again. Initially it will remain dry, but light snowfall will set in during the evening hours in the furthestmost northern mountains. Winds will be strong during the night, moderate during the daytime, from the west. At midday at 2000 m: -2 degrees.

Outlook

On Friday, skies will be heavily overcast, the peaks will be hidden in clouds. In the morning it will remain dry, by evening in Upper Styria, some precipitation will set in, the snowfall level will lie at 1400 m. As a result of mild temperatures, the brittle snowdrifts will continue to settle.

Avalanche problems



Danger ratings



Expositions



Avalanche report for Thursday, 12.01.2023

Mürzsteiger Alpen, Mürztaler Alpen, Östliche Fischbacher Alpen und Wechselgebiet, Westliche Fischbacher Alpen und Grazer Bergland, Stub- und Gleinalpe, Korralpe, Seetaler Alpen, Gurktaler Alpen



thin, ridgeline snowdrift patches

Low avalanche danger - thin snowdrift patches behind abrupt discontinuities in the terrain

Avalanche danger is LOW. Danger zones are being generated by freshly formed snowdrift accumulations, small and near to ridgelines and behind abrupt discontinuities in the terrain. In icy and melt-freeze encrusted summit zones, the risks of being forced to take a fall require attentiveness.

Snowpack structure

The snowdrifts from Tuesday have settled, are well bonded with the old snowpack. The fresh, shallow snowdrift patches have formed in extended east-facing terrain near ridgelines and behind abrupt discontinuities in the terrain. Even if the snowfall makes the slopes turn white again, snow depths in general are still extremely below average.

Weather

On Wednesday night, a front will bring snowfall above 1400 m. In early morning hours the clouds will swiftly disperse, but as of midday, cloud cover will move in once again. Initially it will remain dry, but light snowfall will set in during the evening hours in the furthestmost northern mountains. Winds will be strong during the night, moderate during the daytime, from the west. At midday at 2000 m: -2 degrees.

Outlook

On Friday, skies will be heavily overcast, the peaks will be hidden in clouds. In the morning it will remain dry, by evening in Upper Styria, some precipitation will set in, the snowfall level will lie at 1400 m. As a result of mild temperatures, the brittle snowpack will continue to settle. Avalanche danger levels are not expected to change significantly.

Translated by Jeffrey McCabe, www.creativtrans.com

Avalanche problems



Danger ratings



Expositions

