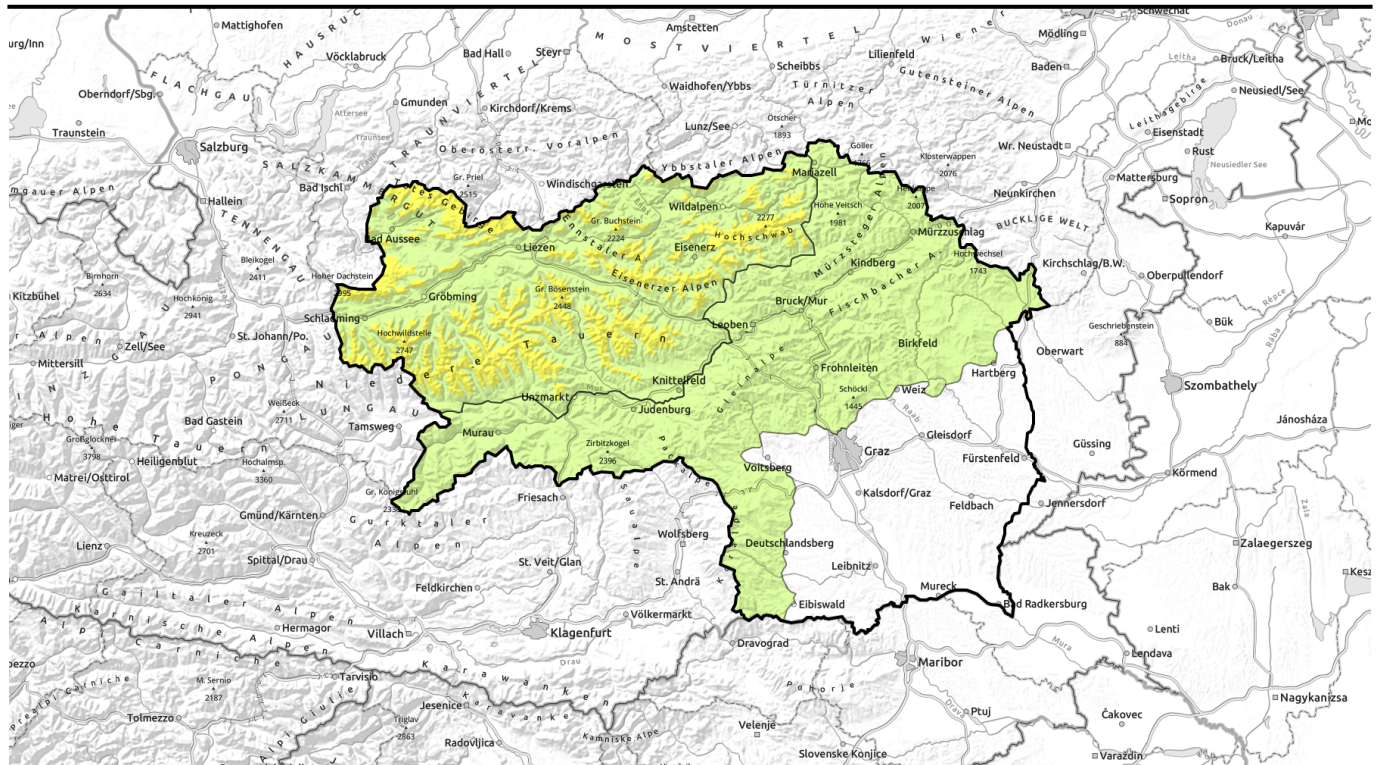


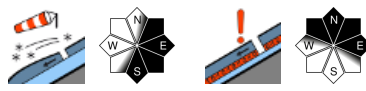
Avalanche report for Wednesday, 11.01.2023



Fresh snow plus wind in the northern barrier cloud regions

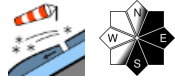
2 forestline
1 forestline

Totes Gebirge, Dachsteingebiet, Schladminger Tauern Nord, Nördliche Wölzer Tauern, Rottenmanner Tauern, Ennstaler Alpen, Hochschwabgebiet, Eisenerzer Alpen, Südliche Wölzer Tauern, Schladminger Tauern Süd, Seckauer Tauern

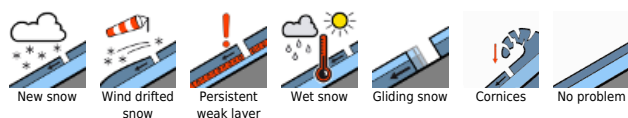


1

Mürzsteiger Alpen, Mürztaler Alpen, Östliche Fischbacher Alpen und Wechselgebiet, Westliche Fischbacher Alpen und Grazer Bergland, Stub- und Gleinalpe, Korralpe, Seetaler Alpen, Gurktaler Alpen



Avalanche problems



Danger ratings

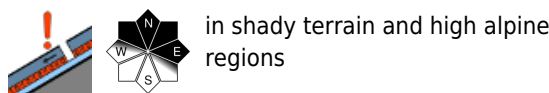
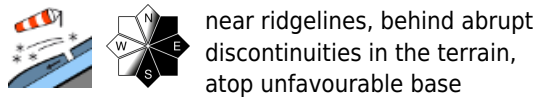
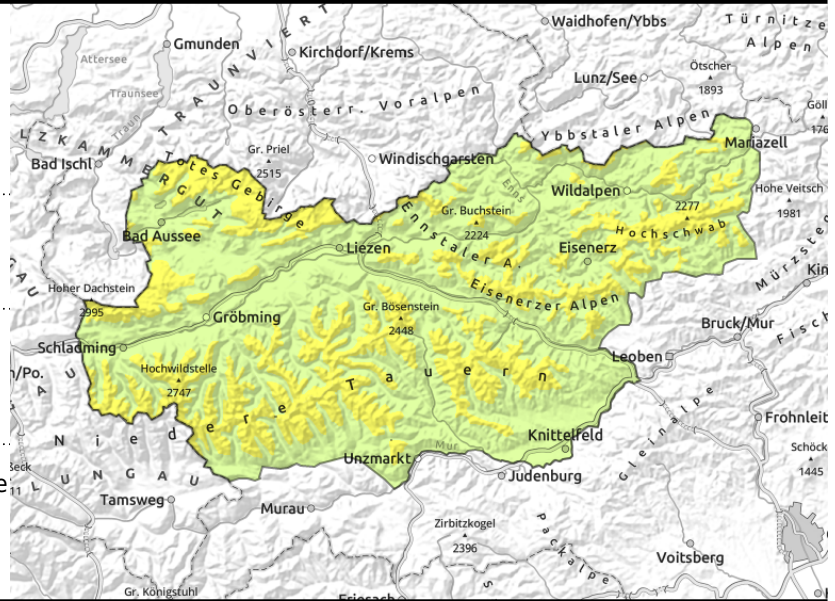


Expositions



Avalanche report for **Wednesday, 11.01.2023**

Totes Gebirge, Dachsteingebiet, Schladminger Tauern Nord, Nördliche Wölzer Tauern, Rottenmanner Tauern, Ennstaler Alpen, Hochschwabgebiet, Eisenerzer Alpen, Südliche Wölzer Tauern, Schladminger Tauern Süd, Seckauer Tauern



Trigger-sensitive snowdrift accumulations at high altitudes

Above the timberline, moderate danger prevails, below that altitude danger is low. Main problem: fresh snowdrifts, near ridgelines and behind abrupt discontinuities in the terrain, which can be triggered even by minimum additional loading. A slab on shady slopes can fracture down to more deeply embedded layers inside the snowpack and attain medium size. Caution urged particularly at entries into gullies and bowls above 2000 m, especially on north-facing slopes.

Snowpack structure

Over the last 48 hours in Totes Gebirge there has been up to 50 cm of fresh snow registered; in Niedere Tauern, 20-30 cm; in Hochschwab up to 40 cm. The fresh snow was transported by stormy NW winds, depositing drifts in extended east-facing terrain, particularly near ridgelines and behind abrupt discontinuities in the terrain, often poorly bonded with the melt-freeze encrusted snowpack beneath them. Also, inside the old snowpack fundament on shady north-facing slopes there are weak layers of faceted crystals; particularly above 2200 m this layer is a potential weak layer. Due to daytime warmth on Wednesday, the brittle drifts up to 2200 m will be able to settle somewhat.

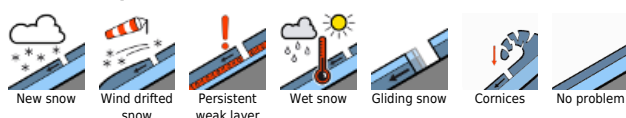
Weather

Wednesday: cloud cover and a warm front will move in from the west, in the morning there could be a small amount of snowfall north of the Main Alpine Ridge (or rainfall). In the afternoon, clouds will also move into the southern and furthestmost eastern regions, but it will remain dry and predominantly sunny. At all altitudes temperatures will rise. At 2000 m: 0 degrees. On Wednesday night, temperatures will drop as the next cold front approaches, along with snow showers. The cold front will bring 10-15 cm of fresh snow in the northern barrier cloud regions on Wednesday night.

Outlook

Moderate danger of slab avalanches will persist at high altitudes.

Avalanche problems



Danger ratings



Expositions



Avalanche report for **Wednesday, 11.01.2023**

Mürzsteiger Alpen, Mürztaler Alpen, Östliche Fischbacher Alpen und Wechselgebiet, Westliche Fischbacher Alpen und Grazer Bergland, Stub- und Gleinalpe, Korralpe, Seetaler Alpen, Gurktaler Alpen



thin, ridgeline snowdrift patches

Low avalanche danger - thin snowdrift patches behind abrupt discontinuities in the terrain

Avalanche danger is LOW. Danger zones are being generated by freshly formed snowdrift accumulations, small and near to ridgelines and behind abrupt discontinuities in the terrain. In icy and melt-freeze encrusted summit zones, the risks of being forced to take a fall require attentiveness.

Snowpack structure

The fresh fallen snow on Tuesday was transported by storm-strength NW winds to extended east-facing slopes. There, particularly near ridgelines and behind abrupt discontinuities in the terrain, snowpack patches were generated which are poorly bonded with the old melt-freeze encrusted snowpack surface above 1600 m. Even if the snowfall makes the slopes turn white again, snow depths in general are still extremely below average.

Weather

Wednesday: cloud cover and a warm front will move in from the west, in the morning there could be a small amount of snowfall north of the Main Alpine Ridge (or rainfall). In the afternoon, clouds will also move into the southern and furthestmost eastern regions, but it will remain dry and predominantly sunny. At all altitudes temperatures will rise. At 2000 m: 0 degrees. On Wednesday night, temperatures will drop as the next cold front approaches, along with snow showers.

Outlook

No significant change in avalanche danger levels is expected over the next few days.

Translated by Jeffrey McCabe, www.creativtrans.com

Avalanche problems



New snow



Wind drifted snow



Persistent weak layer



Wet snow



Gliding snow



Cornices



No problem

Danger ratings



1

low



2

moderate



3

considerable



4

high



5

very high

Expositions

