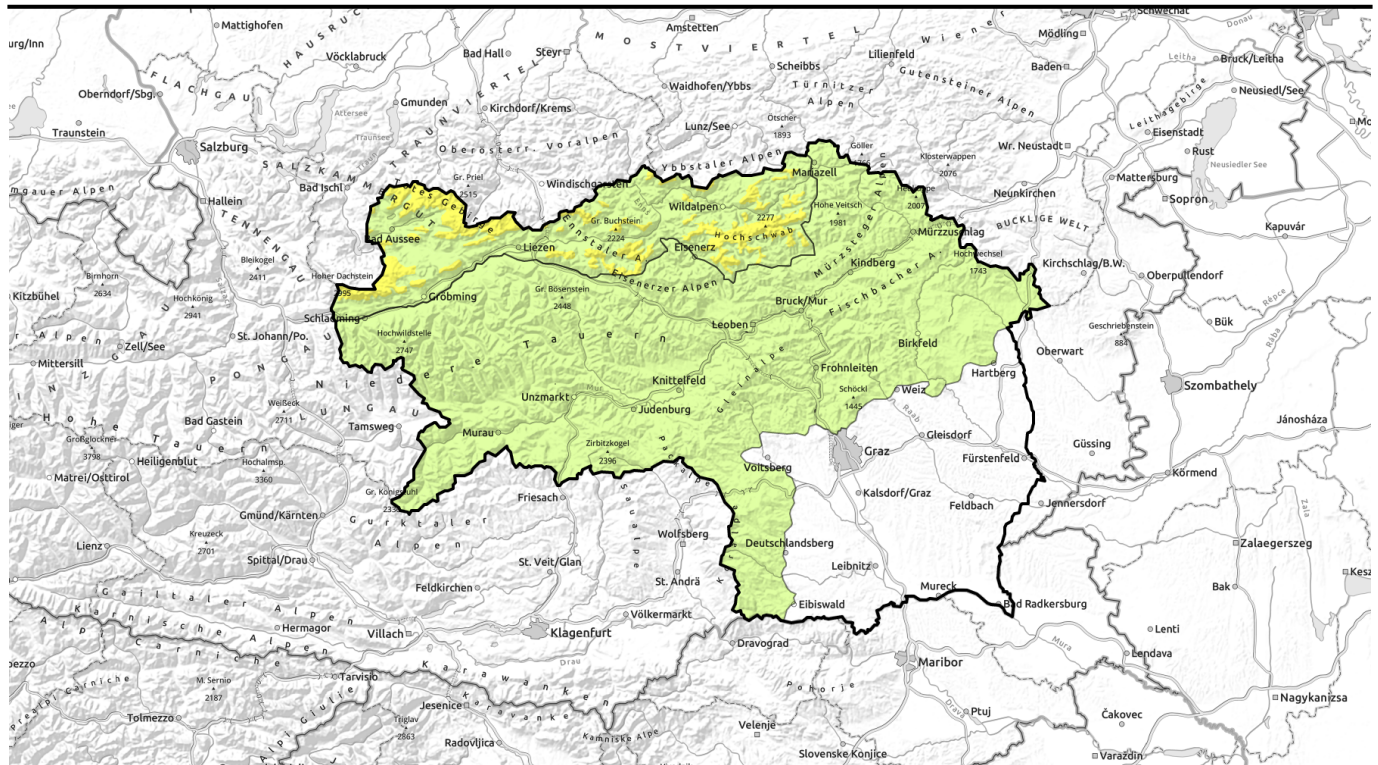

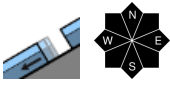




# Avalanche report for Sunday, 25.12.2022



## Low avalanche danger widespread. Moderate danger at high altitudes due to snowdrifts.

	<p>Nördliche Wölzer Tauern, Rottenmann Tauern, Eisenerzer Alpen, Seckauer Tauern, Südliche Wölzer Tauern, Schladminger Tauern Süd, Gurktaler Alpen, Seetaler Alpen, Mürztsteiger Alpen, Mürztaler Alpen, Östliche Fischbacher Alpen und Wechselgebiet, Westliche Fischbacher Alpen und Grazer Bergland, Stub- und Gleinalpe, Korralpe, Schladminger Tauern Nord</p>	
	<p>Dachsteingebiet, Totes Gebirge, Ennstaler Alpen, Hochschwabgebiet</p>	

### Avalanche problems



### Danger ratings



### Expositions



# Avalanche report for Sunday, 25.12.2022

**Nördliche Wölzer Tauern, Rottenmanner Tauern, Eisenerzer Alpen, Seckauer Tauern, Südliche Wölzer Tauern, Schladminger Tauern Süd, Gurktaler Alpen, Seetaler Alpen, Mürzsteger Alpen, Mürztaler Alpen, Östliche Fischbacher Alpen und Wechselgebiet, Westliche Fischbacher Alpen und Grazer Bergland, Stub- und Gleinalpe, Korralpe, Schladminger Tauern Nord**



possible at any time of day or night

## Little snow on the ground. Wet loose-snow avalanches possible in steep terrain.

Avalanche danger is LOW. In extremely steep terrain where there is sufficient snow, isolated small wet slides and (on steep grassy slopes) glide-snow avalanches can be triggered. Zones below glide cracks should be avoided.

### Snowpack structure

The snow depths are below average. Below 1700 m the snowpack is incohesive and thoroughly wet. On steep grassy slopes the snowpack has begun to glide away. On steep grass-covered slopes the first glide cracks have been sighted.

### Weather

Christmas Day, Sunday, will begin with residual cloud, a bit of rainfall, snowfall above 1800 m. South of the Main Alpine Ridge (and later also north of it) - sunshine, only a few high altitude cirrus clouds. Residual cloud will disperse in the valleys. Wind will be light from the west. At 2000m: +4 degrees at midday, then rising further.

On Boxing Day, Monday, fine friendly sunny weather, also mild. In the evening a weak cold front will reach us from the NW, but not bring much snowfall.

### Outlook

Wet loose-snow avalanches released during the rainfall, the wet-snow problem will now decrease. Also the snowdrifts at high altitudes have stabilised due to the high temperatures. Isolated cases, glide-snow avalanches are possible

THE AVALANCHE WARNING SERVICE TEAM WISHES ONE AND ALL A MERRY CHRISTMAS.

#### Avalanche problems



#### Danger ratings



#### Expositions



# Avalanche report for Sunday, 25.12.2022

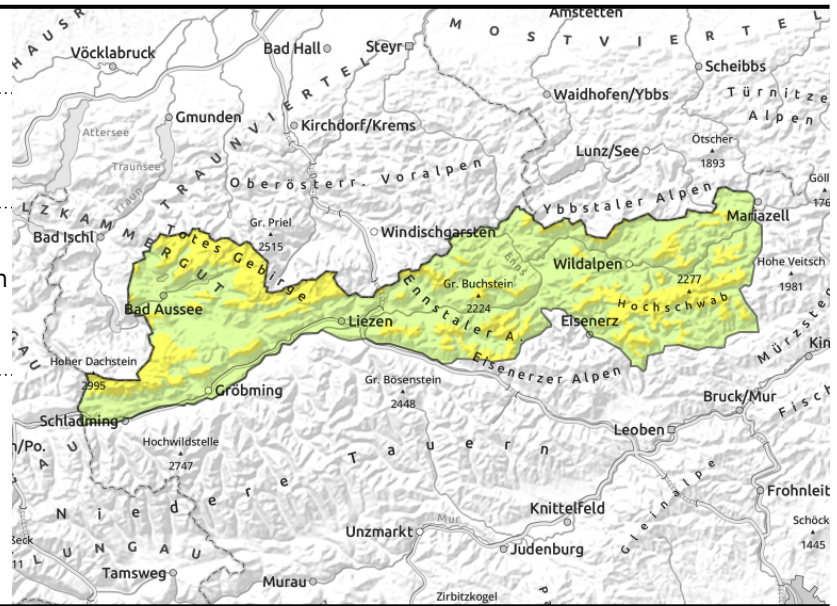
Dachsteingebiet, Totes Gebirge, Ennstaler Alpen, Hochschwabgebiet



in gullies and steep bowls, behind abrupt discontinuities in the terrain, thin and small snowdrifts



possible at any time of day or night



## Caution urged towards fresh drifts at high altitudes. Wet loose-snow slides possible in steep terrain.

Avalanche over widespread areas is LOW, above 2000 m MODERATE. Avalanche prone locations are found mainly at high altitudes. In steep gullies and bowls on N/E/SW facing slopes and behind abrupt discontinuities in the terrain, fresh and small snowdrifts can be triggered by large additional loading, sometimes by minimum additional loading. On shady slopes, furthermore, weak layers in the old snow can be triggered by large additional loading. In extremely steep terrain where there is sufficient snow, isolated small wet slides and loose-snow avalanches can be triggered. On steep grass-covered slopes, the first glide cracks have been sighted - these are indicators of danger.

### Snowpack structure

At high altitudes of the Northern Alps there has been about 10 cm of fresh snow registered, lower down it rained. The snow was transported by westerly winds. Snow depths are highly varied. Below 1700 m the snowpack is incohesive. Only at high altitudes is there an area-wide mostly stable snow cover fundament, isolated weak layers are still evident inside the snowpack. Above about 2000 m, fresh snowdrifts lie deposited atop the compact old snowpack. Below 2000 m, the snowpack is becoming increasingly wet. On steep grass-covered slopes the first glide-cracks have been sighted. Below 2000 m the snowpack has begun to glide away.

### Weather

Christmas Day, Sunday, will begin with residual cloud, a bit of rainfall, snowfall above 1800 m. South of the Main Alpine Ridge (and later also north of it) - sunshine, only a few high altitude cirrus clouds. Residual cloud will disperse in the valleys. Wind will be light from the west. At 2000m: +4 degrees at midday, then rising further.

On Boxing Day, Monday, fine friendly sunny weather, also mild. In the evening a weak cold front will reach us from the NW, but not bring much snowfall.

### Outlook

Wet loose-snow avalanches released during the rainfall, the wet-snow problem will now decrease. Also the snowdrifts at high altitudes have stabilised due to the high temperatures. In isolated cases, glide-snow avalanches are possible

#### Avalanche problems



#### Danger ratings



#### Expositions



# Avalanche report for **Sunday, 25.12.2022**

Translated by Jeffrey McCabe, [www.creativtrans.com](http://www.creativtrans.com)

## Avalanche problems



## Danger ratings



## Expositions

