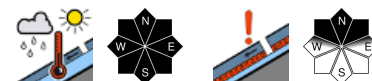


## Low avalanche danger widespread. Moderate danger at high altitudes due to snowdrifts.



Nördliche Wölzer Tauern, Rottenmann Tauern, Eisenerzer Alpen, Seckauer Tauern, Südliche Wölzer Tauern, Schladminger Tauern Süd, Gurktaler Alpen, Seetaler Alpen, Mürtzsteiger Alpen, Mürtztaler Alpen, Östliche Fischbacher Alpen und Wechselgebiet, Westliche Fischbacher Alpen und Grazer Bergland, Stub- und Gleinalpe, Korralpe, Schladminger Tauern Nord, Hochschwabgebiet



2000 m

Dachsteingebiet, Totes Gebirge, Ennstaler Alpen



### Avalanche problems



### Danger ratings



### Expositions



# Avalanche report for **Saturday, 24.12.2022**

**Nördliche Wölzer Tauern, Rottenmanner Tauern, Eisenerzer Alpen, Seckauer Tauern, Südliche Wölzer Tauern, Schladminger Tauern Süd, Gurktaler Alpen, Seetaler Alpen, Mürzsteger Alpen, Mürztaler Alpen, Östliche Fischbacher Alpen und Wechselgebiet, Westliche Fischbacher Alpen und Grazer Bergland, Stub- und Gleinalpe, Koralpe, Schladminger Tauern Nord, Hochschwabgebiet**



due to rain impact and warmth, limited to gullies and bowls with sufficient snow



isolated, in shady terrain, high alpine regions

## Little snow on the ground. Wet loose-snow avalanches possible in steep terrain.

Avalanche danger is LOW. In extremely steep terrain where there is sufficient snow, isolated small wet slides and (on steep grassy slopes) glide-snow avalanches can be triggered. In a few places on shady slopes, the weak layers in the old snowpack can be triggered by large additional loading.

### Snowpack structure

The snow depths are below average. Below 1500 m the snowpack is incohesive and thoroughly wet. Only at high altitudes is there an area-wide snowpack with a generally stable fundament, isolated weak layers are evident in the old snow. On steep grass-covered slopes the first glide cracks have been sighted.

### Weather

Saturday will be gray, particularly from Schladminger Tauern to Gesäuse repeated rainfall is possible, snowfall above 1600-1800m. As of midday, clouds will disperse from the northeast. High-altitude winds will be brisk, stronger near ridgelines, from W/NW. At 2000 m: -2 degrees.

Brilliantly sunny weather can be expected on Sunday in the mountains of Styria. In early morning there will still be high fog in some valleys of Upper Styria, these will rapidly disperse. Most of the day will enjoy cloudless skies. High-altitude winds will be feelable only in ridgeline terrain, from the west. At 2000 m: +5 degrees at midday.

### Outlook

Hardly any change in avalanche danger levels. The thoroughly wet snowpack will become wetter still.

#### Avalanche problems



New snow   Wind drifted snow   Persistent weak layer   Wet snow   Gliding snow   Cornices   No problem

#### Danger ratings



1 low   2 moderate   3 considerable   4 high   5 very high

#### Expositions



# Avalanche report for Saturday, 24.12.2022

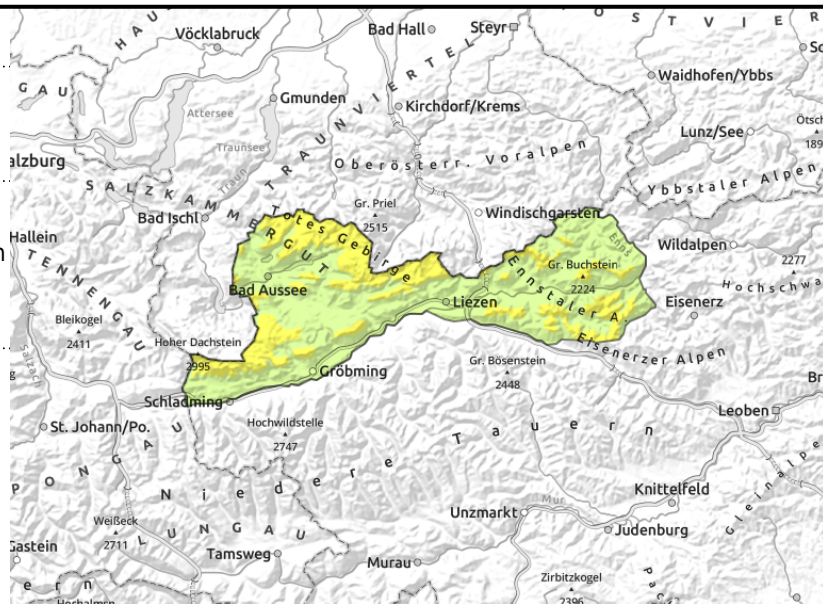
## Dachsteingebiet, Totes Gebirge, Ennstaler Alpen



in gullies and steep bowls, behind abrupt discontinuities in the terrain, thin and small snowdrifts



high snowfall levels due to rain impact, limited to steep gullies and bowls where there is sufficient snow



## Caution urged towards fresh drifts at high altitudes. Wet loose-snow slides possible in steep terrain.

Avalanche over widespread areas is LOW, above 2000 m MODERATE. Avalanche prone locations are found mainly at high altitudes. In steep gullies and bowls on N/E/SW facing slopes and behind abrupt discontinuities in the terrain, fresh and small snowdrifts can be triggered by large additional loading, sometimes by minimum additional loading. On shady slopes, furthermore, weak layers in the old snow can be triggered by large additional loading. In extremely steep terrain where there is sufficient snow, isolated small wet slides and loose-snow avalanches can be triggered. On steep grass-covered slopes, the first glide cracks have been sighted - these are indicators of danger.

### Snowpack structure

Snow depths are highly varied. Below 1500 m the snowpack is incohesive. Only at high altitudes is there an area-wide mostly stable snow cover fundament, isolated weak layers are still evident inside the snowpack. Above about 2000 m, fresh snowdrifts lie deposited atop the compact old snowpack. Below 2000 m, the snowpack is becoming increasingly wet. On steep grass-covered slopes the first glide-cracks have been sighted.

### Weather

Saturday will be gray, particularly from Schladming Tauern to Gesäuse repeated rainfall is possible, snowfall above 1600-1800m. As of midday, clouds will disperse from the northeast. High-altitude winds will be brisk, stronger near ridgelines, from W/NW. At 2000 m: -2 degrees.

Brilliantly sunny weather can be expected on Sunday in the mountains of Styria. In early morning there will still be high fog in some valleys of Upper Styria, these will rapidly disperse. Most of the day will enjoy cloudless skies. High-altitude winds will be feelable only in ridgeline terrain, from the west. At 2000 m: +5 degrees at midday.

### Outlook

As temperatures rise, avalanche danger levels will decrease.

Translated by Jeffrey McCabe, [www.creativtrans.com](http://www.creativtrans.com)

#### Avalanche problems



#### Danger ratings



#### Expositions

