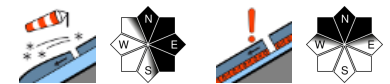


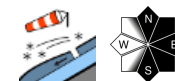
Predominantly low danger, but some avalanche prone locations at high altitudes due to fresh snowdrifts



forrestline
Dachsteingebiet, Totes Gebirge, Schladminger Tauern Nord, Nördliche Wölzer Tauern, Rottenmanner Tauern, Ennstaler Alpen, Eisenerzer Alpen, Seckauer Tauern, Südliche Wölzer Tauern, Schladminger Tauern Süd, Gurktaler Alpen, Hochschwabgebiet, Seetaler Alpen



Koralpe, Stub- und Gleinalpe, Westliche Fischbacher Alpen und Grazer Bergland, Mürztaler Alpen, Mürzsteger Alpen, Östliche Fischbacher Alpen und Wechselgebiet



Avalanche problems



Danger ratings

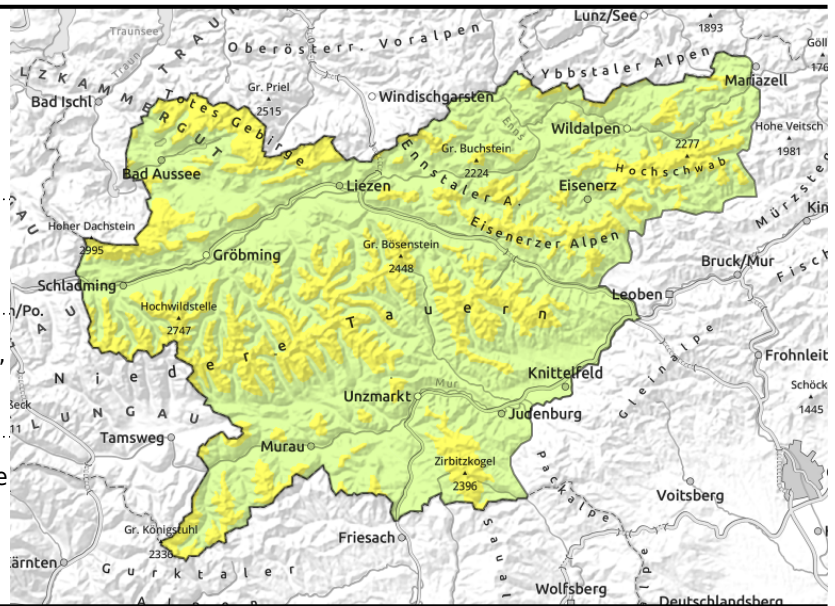
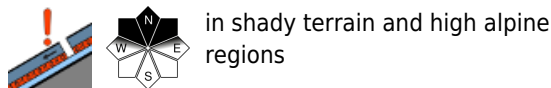
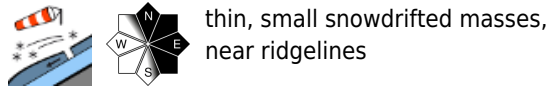


Expositions



Sunday, 18.12.2022

Dachsteingebiet, Totes Gebirge, Schladminger Tauern Nord, Nördliche Wölzer Tauern, Rottenmanner Tauern, Ennstaler Alpen, Eisenerzer Alpen, Seckauer Tauern, Südliche Wölzer Tauern, Schladminger Tauern Süd, Gurktaler Alpen, Hochschwabgebiet, Seetaler Alpen



Fresh snowdrift accumulations: moderate avalanche danger

Above the timberline, moderate avalanche danger prevails, below that altitude danger is low. In few avalanche prone locations, even low additional loading can trigger a small slab avalanche. The danger zones are the freshly generated snowdrift accumulations near ridgelines, behind abrupt discontinuities in the terrain and at the entry points into gullies and bowls. Shady zones need to be assessed especially critically: the bonding of the drifts to the snowbase is poor! Avalanche prone locations are easily recognized to the practiced eye (fresh drifts).

Snowpack structure

The snowpack fundament is stable by and large due to the shifting phases of warm and cold. Only in shady high alpine zones is there a persistent weak layer. On top of that on Saturday, up to 20 cm of cold snowfall was deposited which was then be transported onto east-facing slopes. The drifts will bond poorly with the frequently fundament (possible weak layer) and even inside the drifts there may be weak layers. Due to the shallow amounts of fresh snow, only small slab avalanches can be expected. During the course of the day on Sunday, solar radiation and warmth could cause some loose-snow avalanches to trigger naturally.

Weather

Sunday will bring brilliantly sunny weather in the mountains. Very cold in early morning, temperatures then rising to -7 to 0 degrees during the day at 2000 m. Light westerly winds will be blowing. On Monday, sunny by and large, temperatures will continue to rise.

Outlook

Due to higher temperatures the fresh snowdrift accumulations will stabilise, avalanche danger levels will decrease.

Avalanche problems



Danger ratings



Expositions

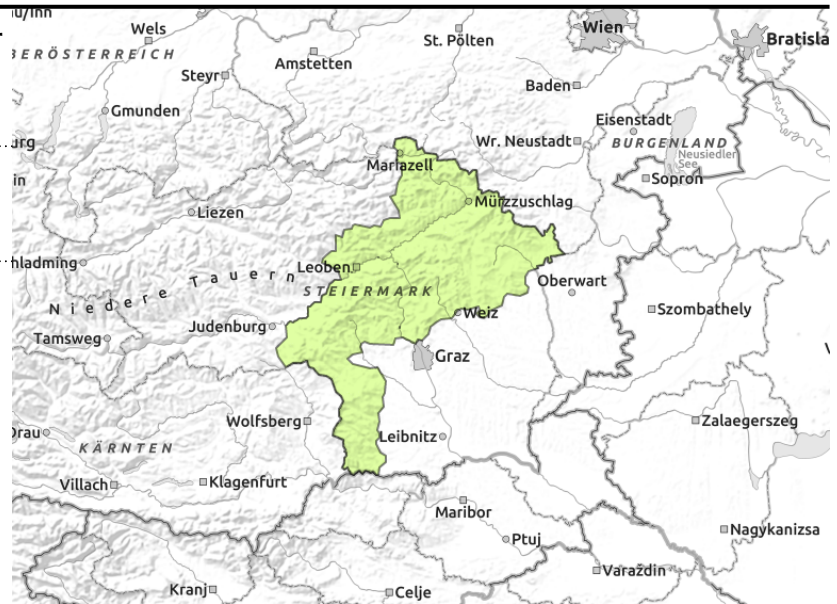


Sunday, 18.12.2022

Koralpe, Stub- und Gleinalpe, Westliche Fischbacher Alpen und Grazer Bergland, Mürztaler Alpen, Mürzsteiger Alpen, Östliche Fischbacher Alpen und Wechselgebiet



near ridgelines, thin, small snowdrift masses



Low avalanche danger, only isolated avalanche prone locations due to fresh drifts

Avalanche danger is low, but in isolated zones even low additional loading can trigger a small-sized slab avalanche. The danger zones are the freshly generated snowdrift accumulations near ridgelines, behind abrupt discontinuities in the terrain and at the entry points into gullies and bowls. Shady zones need to be assessed especially critically: the bonding of the drifts to the snowbase is poor! Avalanche prone locations are easily recognized to the practiced eye (fresh drifts).

Snowpack structure

The snowpack fundament is largely stable due to the shifting phases of warm and cold. On top of that on Saturday, up to 20 cm of cold snowfall was deposited which was then transported onto east-facing slopes. The drifts will bond poorly with the frequently fundament (possible weak layer) and even inside the drifts there may be weak layers. Due to the shallow amounts of fresh snow, only small slab avalanches can be expected. During the course of the day on Sunday, solar radiation and warmth could cause some loose-snow avalanches to trigger naturally.

Weather

Sunday will bring brilliantly sunny weather in the mountains. Very cold in early morning, temperatures then rising to -7 to 0 degrees during the day at 2000 m. Light westerly winds will be blowing. On Monday, sunny by and large, temperatures will continue to rise.

Outlook

Due to higher temperatures the fresh snowdrift accumulations will stabilise, avalanche danger levels will decrease.

Translated by Jeffrey McCabe, www.creativtrans.com

Avalanche problems



Danger ratings



Expositions

