

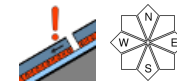
## Mostly low danger. Moderate danger in some high altitude places in the western Northern Alps.



Totes Gebirge, Dachsteingebiet



Stub- und Gleinalpe, Koralpe, Westliche Fischbacher Alpen und Grazer Bergland, Östliche Fischbacher Alpen und Wechselgebiet, Mürtzaler Alpen, Mürtzsteiger Alpen, Seetaler Alpen, Gurktaler Alpen, Schladminger Tauern Nord, Schladminger Tauern Süd, Nördliche Wölzer Tauern, Rottenmanner Tauern, Südliche Wölzer Tauern, Seckauer Tauern, Eisenerzer Alpen, Hochschwabgebiet, Ennstaler Alpen



### Avalanche problems



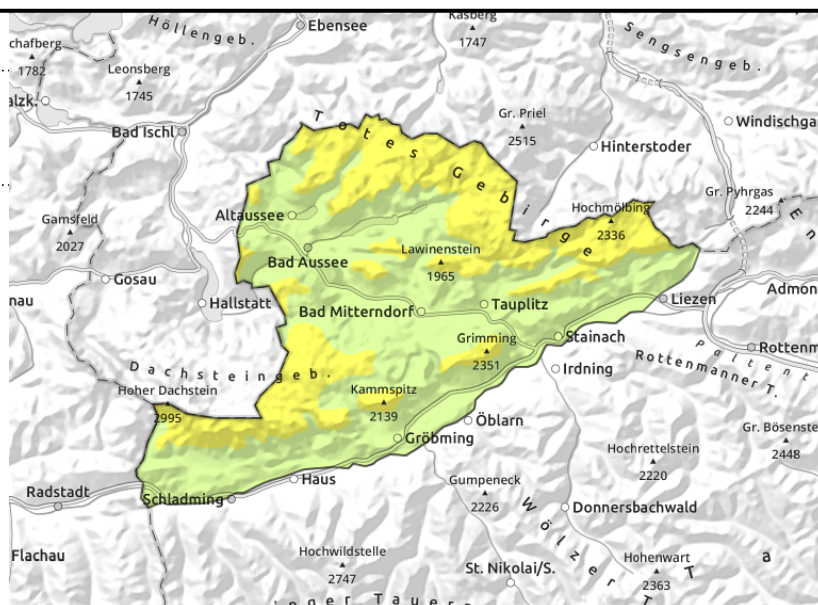
### Danger ratings



### Expositions



**Totes Gebirge, Dachsteingebiet**



**Few danger zones: in shady high-altitude terrain, moderate danger**

In the western Northern Alps above the timberline, moderate avalanche danger prevails. In few danger zones, additional loading can trigger slab avalanches. The avalanche prone locations are found on extremely steep entry points into gullies, shady slopes, bowls and are difficult to recognize. On extremely steep slopes small loose-snow avalanches can trigger. At low altitudes, avalanche danger is low.

**Snowpack structure**

The snowpack fundament is still shallow, often not cohesive. Due to a sequence of melt-freeze crusts and soft layers with faceted crystals, there is a persistent weak layer in places. Atop of that lies 20-40 cm of soft, bonded snow which is often blanketed by a melt-freeze crust or is moist. Only in shady terrain at high altitude is there still powder to be found. Below 1500 m in the northern regions of Styria, there is still no area-wide snowpack fundament.

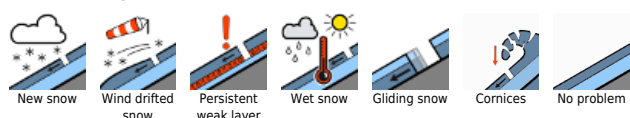
**Weather**

All day Friday, skies will be overcast, temperatures at 2000 m will drop from +2 to -6 degrees. In the evening, light snowfall will set in, winds shift to westerly. On Saturday, temperatures will drop another notch, skies in the morning will be heavily overcast, a bit of snowfall is possible. During the daytime hours, clouds will disperse but it will remain cold. Sunday will be bitter cold but beneath brilliantly blue skies.

**Outlook**

Some fresh snow and wind will generate a slight snowdrift problem. Avalanche danger levels will rise slightly.

**Avalanche problems**



**Danger ratings**

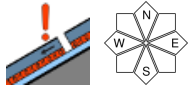


**Expositions**



**Friday, 16.12.2022**

Stub- und Gleinalpe, Koralpe, Westliche Fischbacher Alpen und Grazer Bergland, Östliche Fischbacher Alpen und Wechselgebiet, Mürztaler Alpen, Mürzsteger Alpen, Seetaler Alpen, Gurktaler Alpen, Schladminger Tauern Nord, Schladminger Tauern Süd, Nördliche Wölzer Tauern, Rottenmanner Tauern, Südliche Wölzer Tauern, Seckauer Tauern, Eisenerzer Alpen, Hochschwabgebiet, Ennstaler Alpen



## Low avalanche danger, isolated danger zones due to instable snowpack fundament (persistent weak layer).

Avalanche danger in most of the mountain massifs of Styria is low, but there are isolated danger zones where large additional loading can trigger a slab avalanche. These avalanche prone locations are found in extremely steep, shady entries into gullies, bowls, behind abrupt discontinuities in the terrain and on shady slopes, where a weak snowpack fundament prevails. Large-sized avalanches are not to be expected. On extremely steep slopes, small loose-snow avalanches can trigger.

### Snowpack structure

The snowpack fundament is still shallow, often not cohesive. Due to a sequence of melt-freeze crusts and soft layers with faceted crystals, there is a persistent weak layer in places. Atop of that lies 20-40 cm of soft, bonded snow which is often blanketed by a melt-freeze crust or is moist. Only in shady terrain at high altitude is there still powder to be found. On Thursday night at high altitudes, a bit of rainfall is possible; this would further moisten the snowpack.

### Weather

On Thursday night amid mild temperatures in the southern and eastern regions of Styria, minor snowfall is possible, or else rainfall and stormy SW winds. All day Friday, skies will be overcast, temperatures at 2000 m will drop from +2 to -6 degrees. In the evening, light snowfall will set in, winds shift to westerly.

On Saturday, temperatures will drop another notch, skies in the morning will be heavily overcast, a bit of snowfall is possible. During the daytime hours, clouds will disperse but it will remain cold. Sunday will be bitter cold but beneath brilliantly blue skies.

### Outlook

Some fresh snow and wind will generate a slight snowdrift problem. Avalanche danger levels will rise slightly.

Translated by Jeffrey McCabe, [www.creativtrans.com](http://www.creativtrans.com)

#### Avalanche problems



#### Danger ratings



#### Expositions

