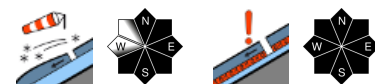


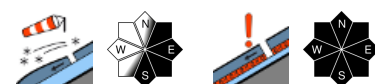
Fresh snowdrifts atop instable snowpack fundament: moderate avalanche danger despite shallow snow



forrestline
Schladminger Tauern Nord, Nördliche Wölzer Tauern, Rottenmanner Tauern, Schladminger Tauern Süd, Südliche Wölzer Tauern, Seckauer Tauern, Ennstaler Alpen, Eisenerzer Alpen, Totes Gebirge, Dachsteingebiet, Mürztaler Alpen, Mürzsteger Alpen, Hochschwabgebiet, Seetaler Alpen, Gurktaler Alpen



Stub- und Gleinalpe, Koralpe, Westliche Fischbacher Alpen und Grazer Bergland, Östliche Fischbacher Alpen und Wechselgebiet



Avalanche problems



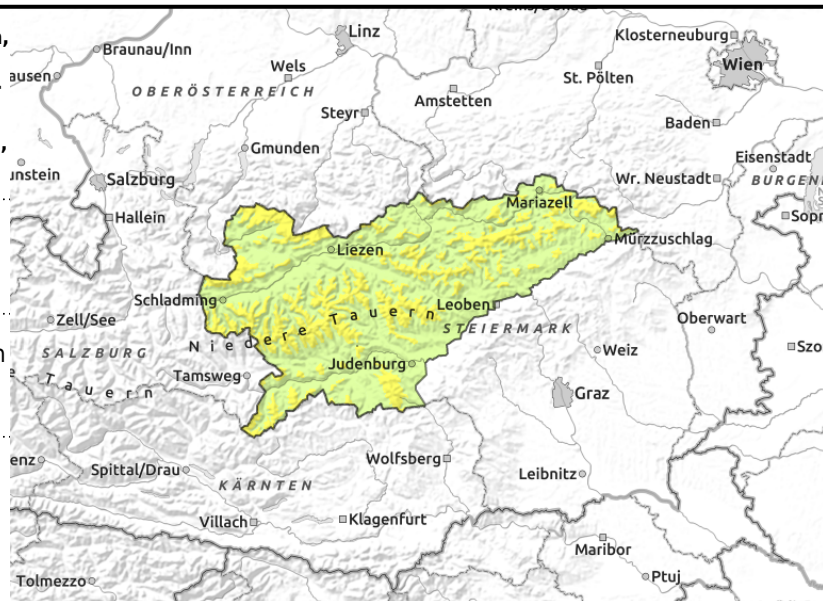
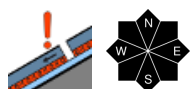
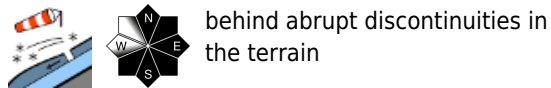
Danger ratings



Expositions



Schladminger Tauern Nord, Nördliche Wölzer Tauern, Rottenmanner Tauern, Schladminger Tauern Süd, Südliche Wölzer Tauern, Seckauer Tauern, Ennstaler Alpen, Eisenerzer Alpen, Totes Gebirge, Dachsteingebiet, Mürztaler Alpen, Mürzsteger Alpen, Hochschwabgebiet, Seetaler Alpen, Gurktaler Alpen



Moderate avalanche danger above timberline

In the northern and western regions, moderate danger prevails above the timberline. In some danger zones, slab avalanches can be triggered: particularly behind abrupt discontinuities in the terrain on east-facing and south-facing slopes and forested zones. Wind-loaded gullies and bowls need to be assessed with particular care. Due to the persistent weak layer there are some isolated, difficult-to-recognize danger zones on north-facing slopes.

Snowpack structure

The snowpack fundament is still shallow, often incohesive (not area-wide) but due to a sequence of melt freeze crusts and soft layers of faceted crystals rather instable (persistent weak layer). In some places, surface hoar has formed. Since Friday, 20-40 cm of fresh snow has been deposited on top of this, then transported by strong N/SW winds into gullies, bowls, forest edges and in general onto east-facing and south-facing slopes. Exposed zones are bare.

Weather

Tuesday will be sunny, with outstanding visibility and little wind. Towards evening high-altitude clouds will move in from the west and the SW winds will intensify somewhat. At 2000 m: -12 degrees in early morning, rising over the daytime hours.

Wednesday will be sunny in the southern regions, a warm front will subsequently bring clouds, milder temperatures strong southerly winds and a few snowflakes.

Outlook

Due to intensifying southerly winds, the snowdrift problem will move to north-facing slopes. Avalanche danger will remain moderate.

Avalanche problems



Danger ratings



Expositions



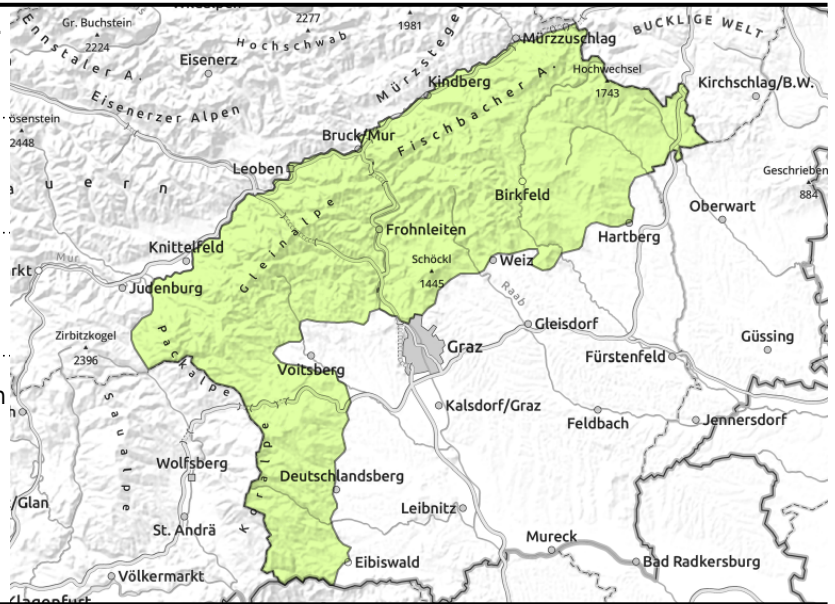
Stub- und Gleinalpe, Koralpe, Westliche Fischbacher Alpen und Grazer Bergland, Östliche Fischbacher Alpen und Wechselgebiet



exposed terrain bare of snow



triggerable in few spots in open terrain



Low avalanche danger. Isolated danger zones due to fresh drifts.

Avalanche danger in the borderline ranges is low, but isolated avalanche prone locations exist where small slab avalanches can be triggered. The danger zones: freshly generated snowdrift locations near ridgelines, behind discontinuities in the terrain, at the entries into gullies and bowls and at forest edges. Nevertheless, the releases will be small-sized.

Snowpack structure

The snowpack fundament in the borderline mountain ranges is melt-freeze encrusted for the most part, but also riddled with weak intermediate layers and surface hoar. Since Friday, 20 cm of fresh, cold snow has been added, then transported by strong N/SW winds and deposited in gullies, bowls, forest edges and in general on east-facing and south-facing slopes.

Weather

Tuesday will be sunny, with outstanding visibility and little wind. Towards evening high-altitude clouds will move in from the west and the SW winds will intensify somewhat. At 2000 m: -12 degrees in early morning, rising over the daytime hours.

Wednesday will be sunny in the southern regions, a warm front will subsequently bring clouds, milder temperatures strong southerly winds and a few snowflakes.

Outlook

Due to intensifying southerly winds, the snowdrift problem will move to north-facing slopes. Avalanche danger will remain low.

Translated by Jeffrey McCabe, www.creativtrans.com

Avalanche problems



Danger ratings



Expositions

