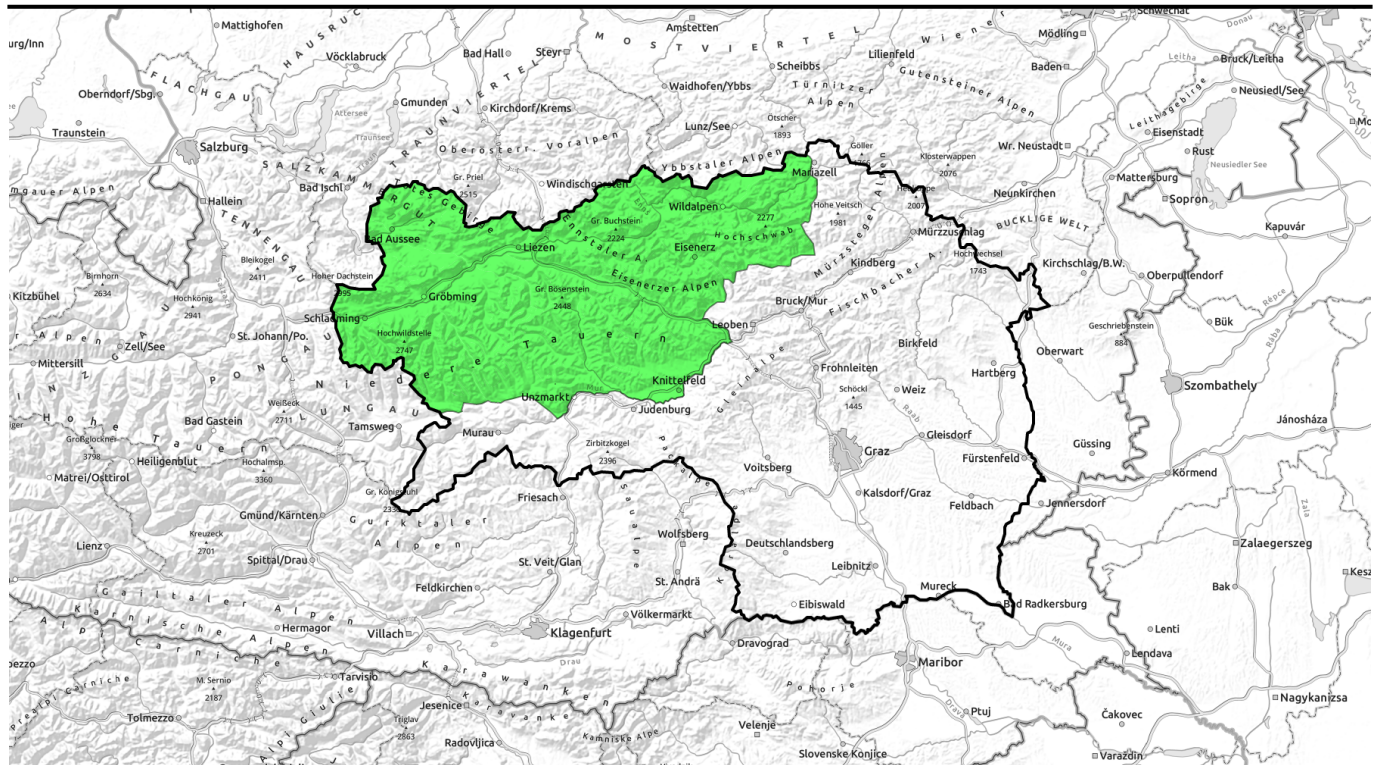


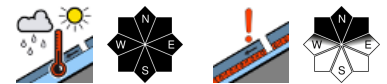
01.05.2022 through 02.05.2022



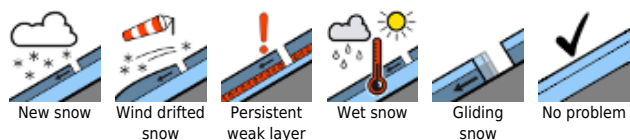
Final Avalanche Bulletin for winter 2021/2022. Avalanche danger is LOW, only very few danger zones.



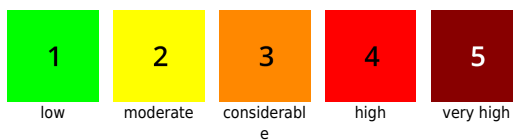
Totes Gebirge, Dachsteingebiet, Schladminger Tauern Nord, Nördliche Wölzer Tauern, Rottenmanner Tauern, Ennstaler Alpen, Südliche Wölzer Tauern, Schladminger Tauern Süd, Seckauer Tauern, Eisenerzer Alpen, Hochschwabgebiet



Avalanche problems



Danger ratings

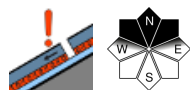
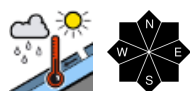
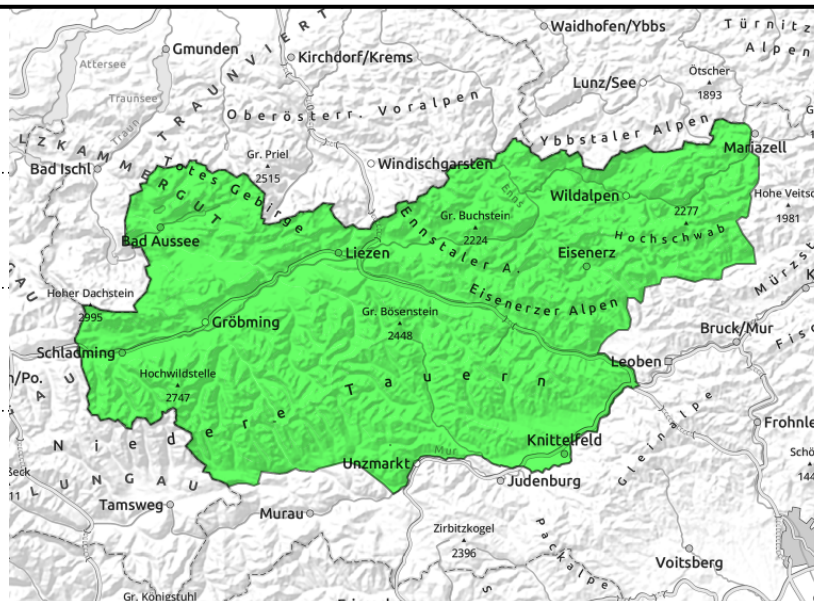


Expositions



01.05.2022 through 02.05.2022

Totes Gebirge, Dachsteingebiet, Schladminger Tauern Nord, Nördliche Wölzer Tauern, Rottenmanner Tauern, Ennstaler Alpen, Südliche Wölzer Tauern, Schladminger Tauern Süd, Seckauer Tauern, Eisenerzer Alpen, Hochschwabgebiet



Isolated avalanche prone locations

Isolated danger zones for near-surface wet-snow slides or mostly small wet-snow avalanches which can trigger naturally in extremely steep terrain due to daytime warming or rain seepage. In addition, on steep shady slopes at high altitudes, triggering a moist slab still cannot be ruled out.

Snowpack structure

There is a cohesive area-wide snowpack only at high altitudes above 2000 m, and in gullies and bowls at lower altitudes. The snowpack fundament is compact and isotherm, blanketed by a thin sheet of fresh snow which quickly becomes moist in the intense diffuse radiation. Potential weak layers are possible in the dirty layers surrounding the Sahara dust. All in all, snow depths are below average for this juncture of the season.

Weather

On Monday, heavy cloud cover, reduced visibility, showery weather. Intermittent rain showers are possible in all mountain massifs, snow showers above 2000 m. Some showers can be thunderstorms, particularly following sunny intervals in the afternoon, accompanied by graupel. Winds will be light to moderate from the southeast, in the Northern Alps in particular the foehn-induced SE winds can be gusty and brisk. At 2000 m at midday: +1 degree; at 1500 m: +6 degrees.

On Tuesday, instable weather conditions will continue. In the morning, often sunny and dry, with occasionally poor visibility due to high-fog like clouds, then due to convective cloud build-up. As of midday, convective cloud build-up, the peaks can disappear in fog and local showers and thunderstorms can be expected. Light southerly winds. At 2000 m: +4 degrees.

Outlook

Little change is expected in the avalanche situation. Variable weather conditions will persist throughout the week. Some snowfall at high altitudes. The slopes will rapidly become bare of snow further down due to overcast, warm nighttime skies.

Translated by Jeffrey McCabe, www.creativtrans.com

Avalanche problems



Danger ratings



Expositions

