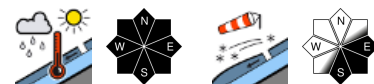


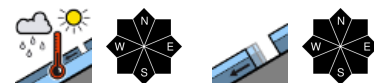
## Wet-snow situation at intermediate altitudes. Snowdrifts at high altitudes.



Totes Gebirge, Dachsteingebiet, Ennstaler Alpen, Rottenmanner Tauern, Schladminger Tauern Nord, Schladminger Tauern Süd, Nördliche Wölzer Tauern, Südliche Wölzer Tauern, Seckauer Tauern, Eisenerzer Alpen, Hochschwabgebiet, Mürzsteger Alpen



Gurktaler Alpen, Seetaler Alpen, Stub- und Gleinalpe, Koralpe



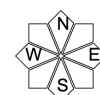
### Avalanche problems



### Danger ratings

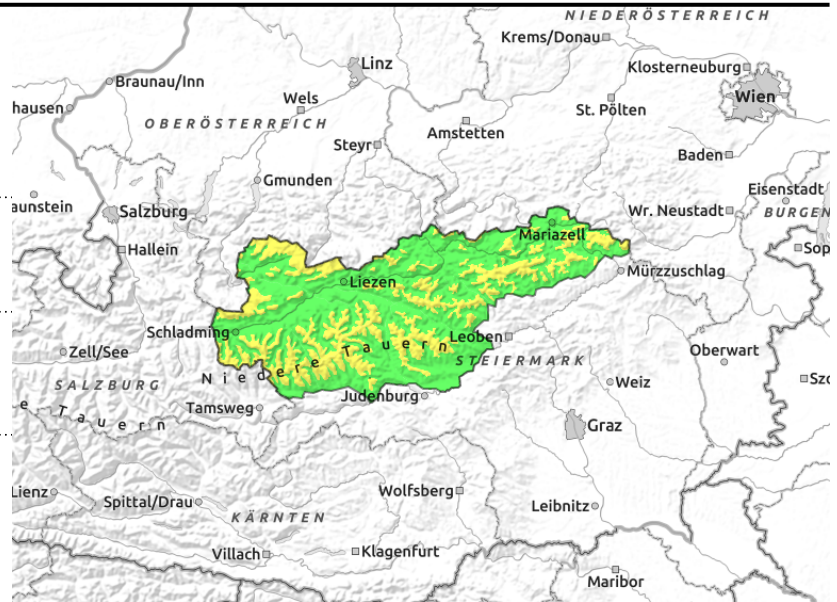
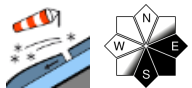
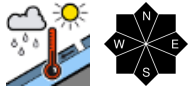
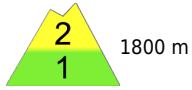


### Expositions



**16.04.2022**

**Totes Gebirge, Dachsteingebiet, Ennstaler Alpen, Rottenanner Tauern, Schladminger Tauern Nord, Schladminger Tauern Süd, Nördliche Wölzer Tauern, Südliche Wölzer Tauern, Seckauer Tauern, Eisenerzer Alpen, Hochschwabgebiet, Mürzsteger Alpen**



## Fresh snowdrift accumulations at high altitudes

Avalanche danger above 2000m is moderate. Freshly generated snowdrifts can be triggered as a slab by one sole skier. Particularly alertedness is necessary on E/S facing slopes. For glide-snow avalanches, take heed of the glide cracks: they are red flags. Naturally triggered wet-snow avalanches are still possible.

## Snowpack structure

Due to lower temperatures the snowpack surface can consolidate at high altitudes. Fresh snowdrift accumulations have been deposited but are poorly bonded to the old snowpack.

The snowpack is fundamentally moist or wet, depending on altitude, and rotten. At high altitudes, caution is urged towards older and ridgeline snowdrift masses.

## Weather

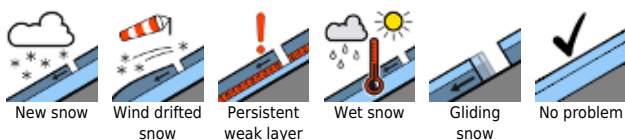
Skies on Saturday will be variably cloudy, with reduced visibility, many peaks veiled in cloud. In the Northern Alps, repeated rain showers, above 1300-1500 m snow showers are possible. In the southern massifs there will be more bright intervals during the day, the clouds occasionally disperse, and it will remain largely dry. A strong, cool northerly wind will be blowing, gusts at 60-70 km/hr are possible.

## Outlook

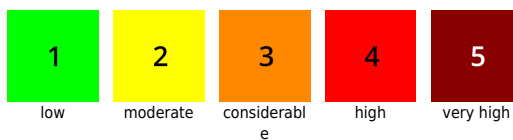
Easter Sunday will be variably cloudy and dry. Intermediate level clouds will often pass through, reduce visibility somewhat. Some peaks will be shrouded in fog, particularly in NW regions. Apart from that, some sunshine is possible.

Avalanche danger will gradually recede.

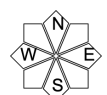
### Avalanche problems



### Danger ratings

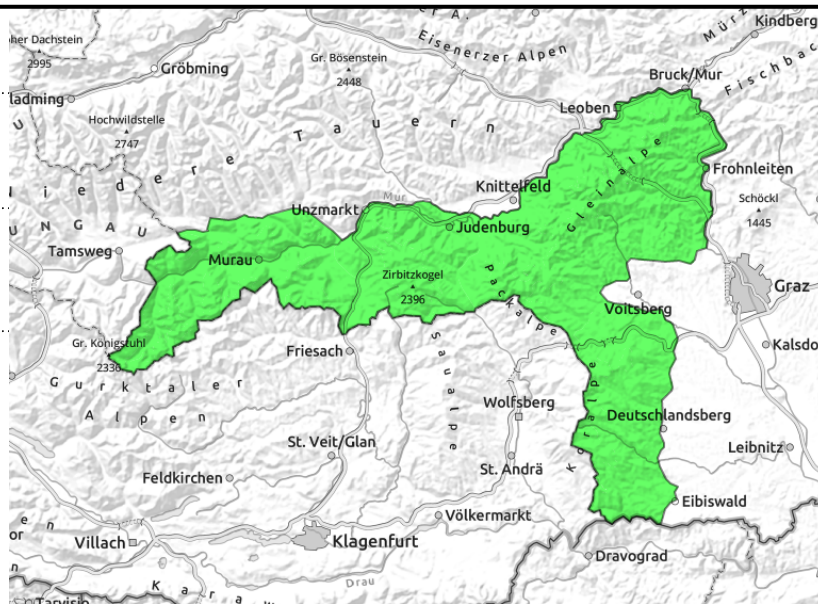
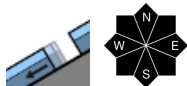
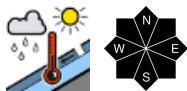


### Expositions



**16.04.2022**

**Gurktaler Alpen, Seetaler Alpen, Stub- und Gleinalpe, Koralpe**



**Low avalanche danger.**

Low avalanche danger prevails. Nevertheless, due to rainfall isolated wet-snow slides are possible on slopes which have not yet discharged.

**Snowpack structure**

Due to intermittent rainfall up to high altitudes the snowpack as moistened or became thoroughly wet in the largely isotherm snowpack.

In summit regions the snowpack surface is consolidating due to lower temperatures.

**Weather**

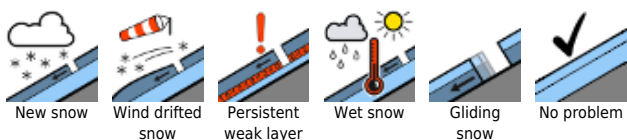
Skies on Saturday will be variably cloudy, with reduced visibility, many peaks veiled in cloud. In the Northern Alps, repeated rain showers, above 1300-1500 m snow showers are possible. In the southern massifs there will be more bright intervals during the day, the clouds occasionally disperse, and it will remain largely dry. A strong, cool northerly wind will be blowing, gusts at 60-70 km/hr are possible.

**Outlook**

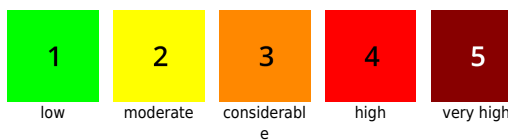
No change in avalanche danger is expected.

Translated by Jeffrey McCabe, [www.creativtrans.com](http://www.creativtrans.com)

**Avalanche problems**



**Danger ratings**



**Expositions**

