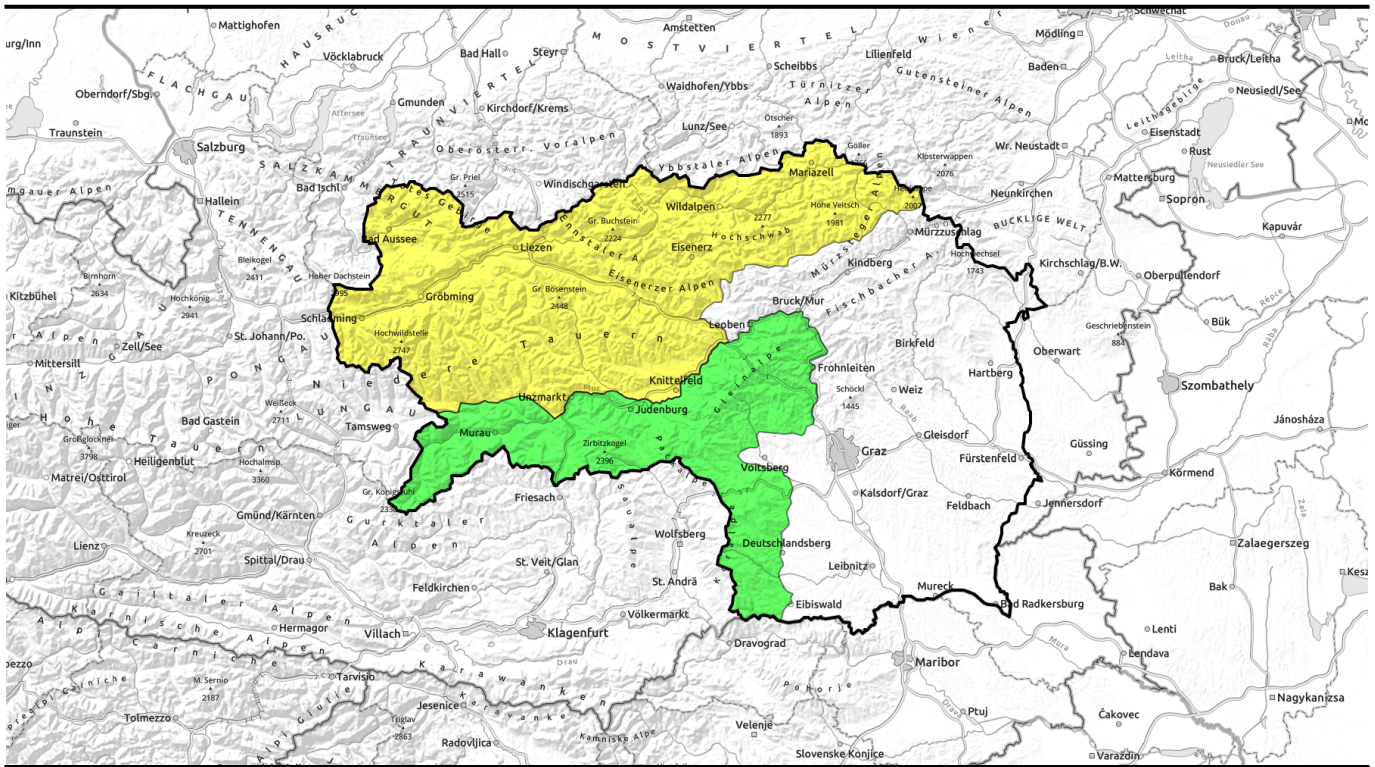


15.04.2022



A cold front passing through, mostly cloudy, precipitation possible in all massifs. Due to rain: wet-snow situation!



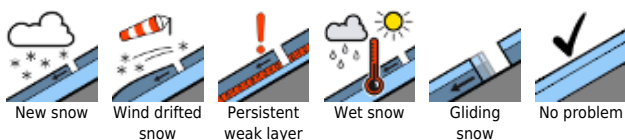
Totes Gebirge, Dachsteingebiet, Ennstaler Alpen, Rottenmanner Tauern, Schladminger Tauern Nord, Schladminger Tauern Süd, Nördliche Wölzer Tauern, Südliche Wölzer Tauern, Seckauer Tauern, Eisenerzer Alpen, Hochschwabgebiet, Mürzteger Alpen



Gurktaler Alpen, Seetaler Alpen, Stub- und Gleinalpe, Korralpe



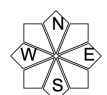
Avalanche problems



Danger ratings

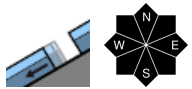
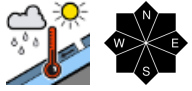
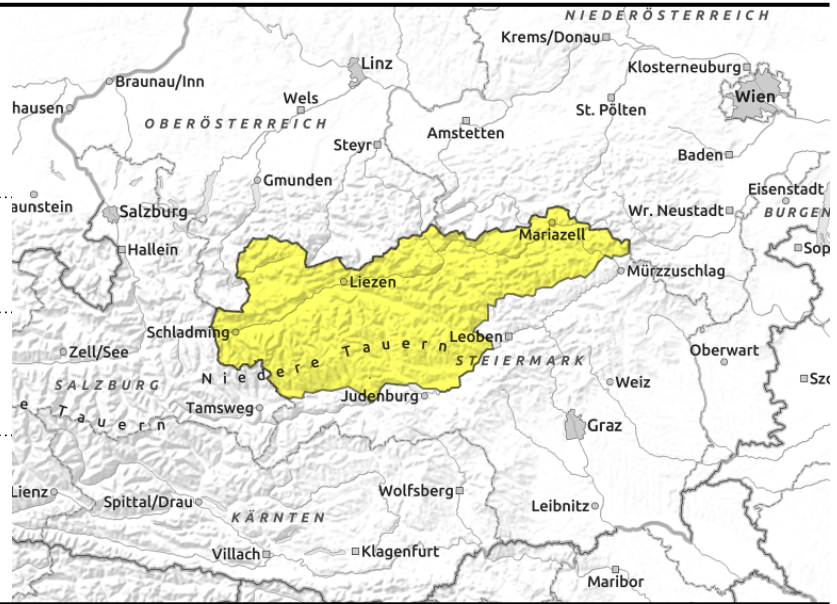


Expositions



15.04.2022

Totes Gebirge, Dachsteingebiet, Ennstaler Alpen, Rottenmann Tauern, Schladminger Tauern Nord, Schladminger Tauern Süd, Nördliche Wölzer Tauern, Südliche Wölzer Tauern, Seckauer Tauern, Eisenerzer Alpen, Hochschwabgebiet, Mürzsteger Alpen



Moderate avalanche danger prevails

Avalanche danger is moderate. Due to rain, the wet-snow avalanches are the biggest problem, they can release naturally or be triggered by skiers in steep zones which have not yet discharged. For glide-snow avalanches, take heed of the glide cracks: they are red flags. At high altitudes where there is wind impact, some snowfall, small drifts will accumulate. Deteriorating visibility can be expected.

Snowpack structure

Due to intermittent rainfall up to high altitudes the already isotherm snowpack will moisten or become thoroughly wet. Thereby, snowpack firmness will be forfeited, the tendency towards naturally triggered wet snow slides will increase. On steep slopes where there is still sufficient snow and on grassy slopes which have not yet discharged, the entire snowpack can slide away just like a glide-snow avalanche. At high altitudes, the older and fresh snowdrift accumulations still require caution.

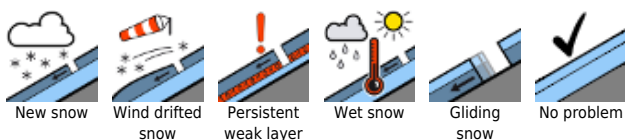
Weather

Already in early morning the cold front will spread precipitation in the NW regions, rainfall will follow in all the Styrian massifs, frequently heavy, even thunderstorms are possible. The snowfall level will descend to about 2000m. Overall, cloud cover will predominate all day long, though some bright intervals are possible. Storm-strength NW winds. Temperatures will recede. At midday at 1500m: +6 degrees; at 2000 m: +2 degrees.

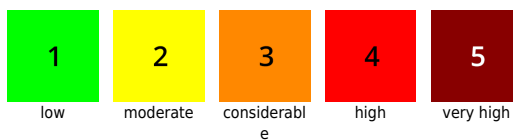
Outlook

On Saturday, mostly heavy, low-lying clouds, the snowpack level will descend to 1200m, some snowfall/rainfall is possible. A strong N/NW wind will be blowing. Temperatures will recede another notch. At 1500m: -1 degree; at 2000m: -4 degrees. Due to rainfall, the wet-snow situation will prevail; due to some fresh snow and wind, take heed of drifts at high altitudes.

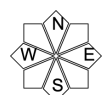
Avalanche problems



Danger ratings

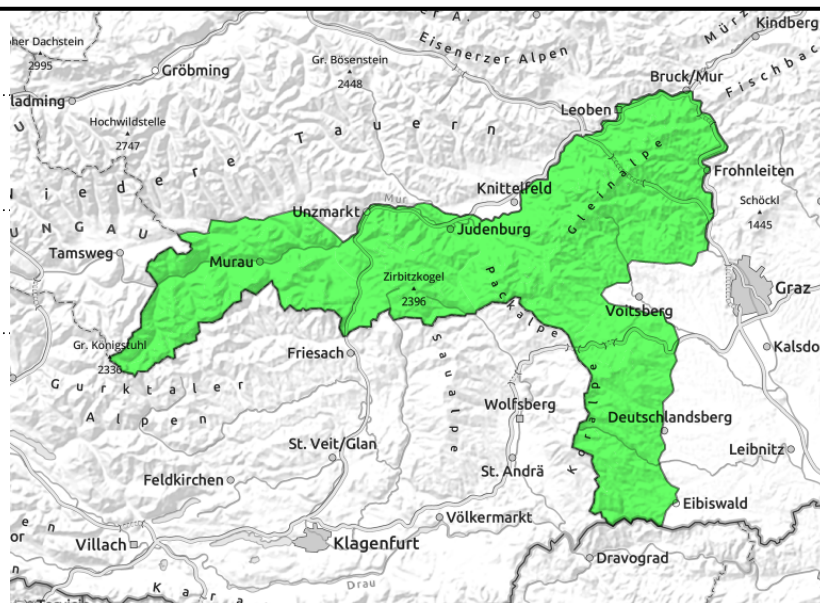
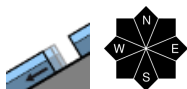
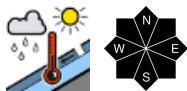


Expositions



15.04.2022

Gurktaler Alpen, Seetaler Alpen, Stub- und Gleinalpe, Koralpe



Low avalanche danger

Low avalanche danger prevails. Nevertheless, due to rainfall some wet-snow avalanches and isolated glide-snow slides are possible on slopes which have not yet discharged. Poor visibility is expected.

Snowpack structure

Due to intermittent rainfall up to high altitudes the snowpack will moisten or become thoroughly wet. Thereby, snowpack firmness will be forfeited, the tendency towards naturally triggered wet snow slides will increase. On steep slopes where there is still sufficient snow and on grassy slopes which have not yet discharged, the entire snowpack can slide away just like a glide-snow avalanche. Since the slopes are becoming bare of snow, backcountry tours are already much reduced.

Weather

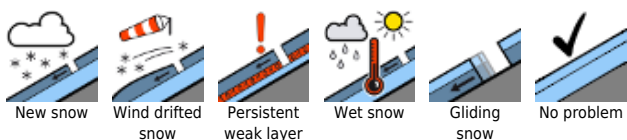
Already in early morning the cold front will spread precipitation in the NW regions, rainfall will follow in all the Styrian massifs, frequently heavy, even thunderstorms are possible. The snowfall level will descend to about 2000m. Overall, cloud cover will predominate all day long, though some bright intervals are possible. Storm-strength NW winds. Temperatures will recede. At midday at 1500m: +6 degrees; at 2000 m: +2 degrees.

Outlook

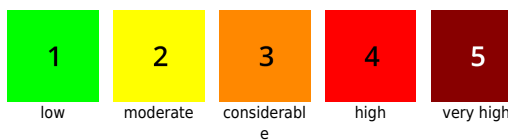
On Saturday, mostly heavy, low-lying clouds, the snowpack level will descend to 1200m, some snowfall/rainfall is possible. A strong N/NW wind will be blowing. Temperatures will recede another notch. At 1500m: -1 degree; at 2000m: -4 degrees. Due to rainfall, a wet-snow situation will prevail; due to some fresh snow and wind, take heed of drifts at high altitudes.

Translated by Jeffrey McCabe, www.creativtrans.com

Avalanche problems



Danger ratings



Expositions

