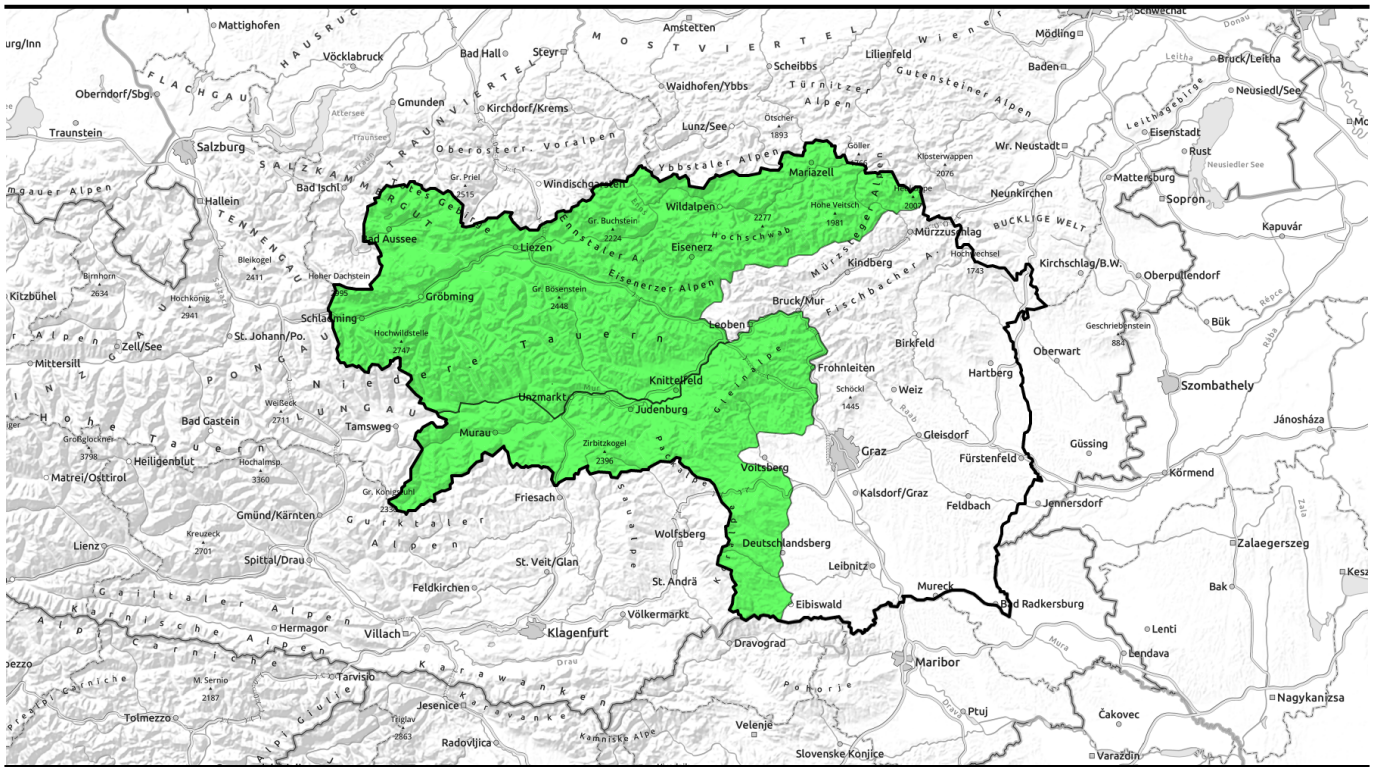
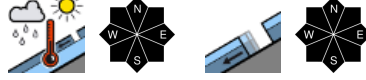


14.04.2022, morning




Springtime conditions: daytime danger cycle

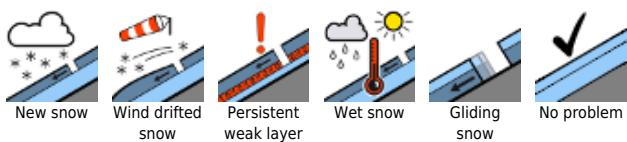
1 Hochschwabgebiet, Eisenerzer Alpen, Ennstaler Alpen, Rottenmanner Tauern, Nördliche Wölzer Tauern, Schladminger Tauern Nord, Dachsteingebiet, Totes Gebirge, Seckauer Tauern, Südliche Wölzer Tauern, Schladminger Tauern Süd, Murzsteger Alpen



1 Gurktaler Alpen, Seetaler Alpen, Koralpe, Stub- und Glinalpe



Avalanche problems



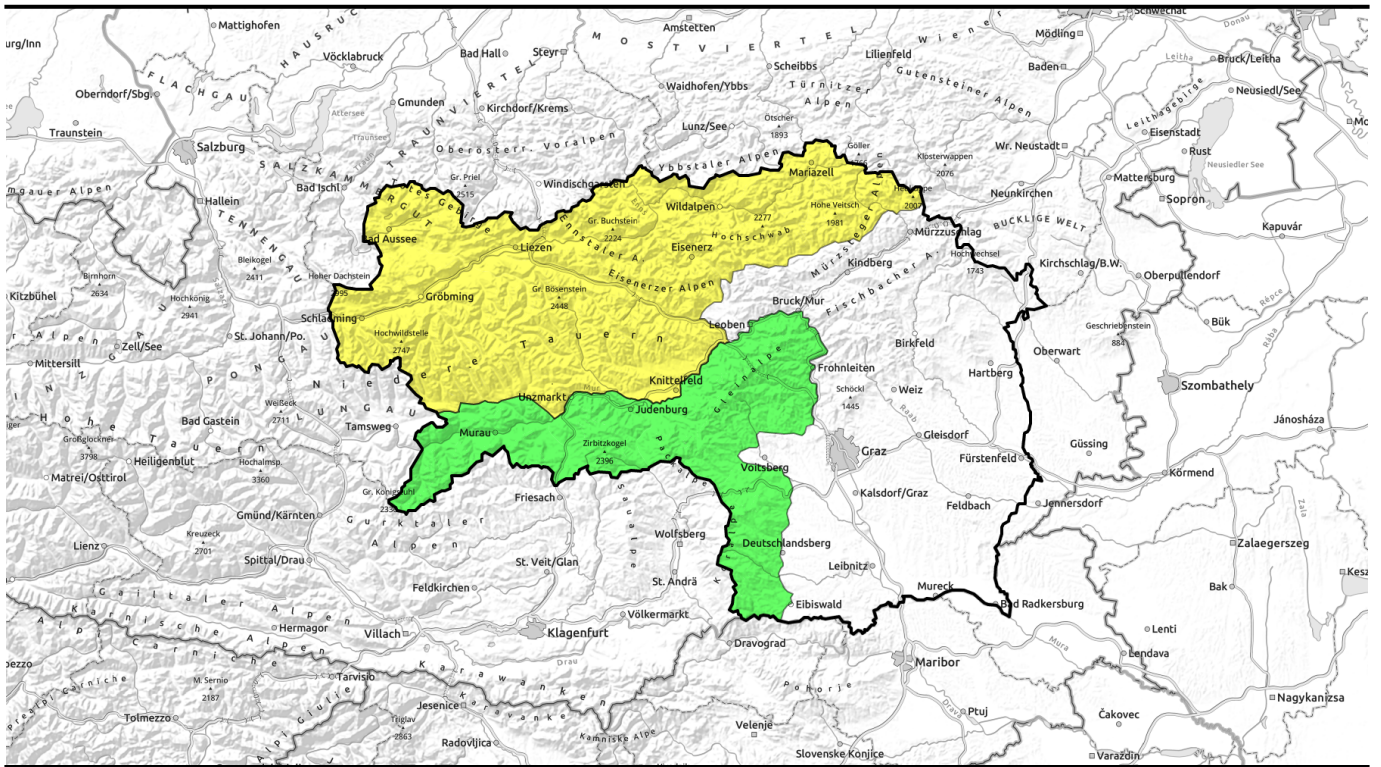
Danger ratings







Expositions



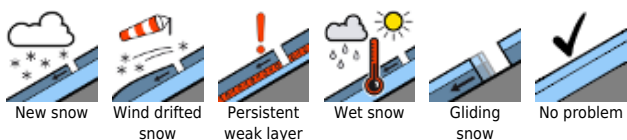
14.04.2022, afternoon



Frühjahrssituation und somit Tagesgang der Lawinengefahr!

	<p>Hochschwabgebiet, Eisenerzer Alpen, Ennstaler Alpen, Rottenmanner Tauern, Nördliche Wölzer Tauern, Schladminger Tauern Nord, Dachsteingebiet, Totes Gebirge, Seckauer Tauern, Südliche Wölzer Tauern, Schladminger Tauern Süd, Mürzsteger Alpen</p>	
	<p>Gurktaler Alpen, Seetaler Alpen, Koralpe, Stub- und Gleinalpe</p>	

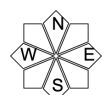
Avalanche problems



Danger ratings

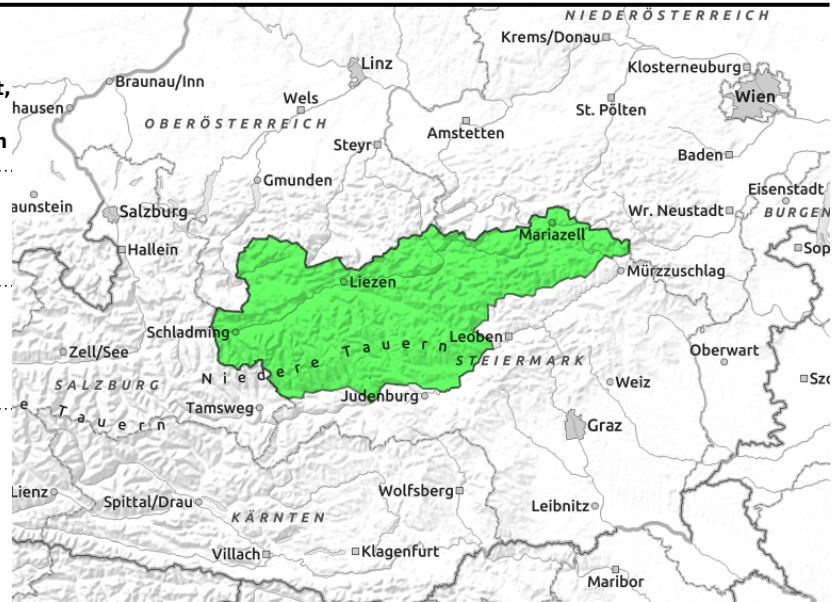
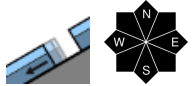


Expositions



14.04.2022, morning

Hochschwabgebiet, Eisenerzer Alpen, Ennstaler Alpen, Rottenmanner Tauern, Nördliche Wölzer Tauern, Schladminger Tauern Nord, Dachsteingebiet, Totes Gebirge, Seckauer Tauern, Südliche Wölzer Tauern, Schladminger Tauern Süd, Mürzsteger Alpen



Daytime increase in avalanche danger to moderate. Wet-snow situation.

Avalanche danger increases from swiftly low to moderate in the course of the day due to mild temperatures and solar radiation. Main danger: naturally triggered or skier-triggered (minimum additional loading) wet-snow avalanches on steep not-yet-discharged slopes. Also, the likelihood of glide-snow avalanches is increasing. Avoid zones below glide cracks. At higher altitudes in steep terrain, older snowdrift accumulations can be triggered as slab avalanches by large additional loading.

Snowpack structure

Due to springtime temperatures and solar radiation, the firmness regained at night is quickly lost. Due to moistness and weness, the largely isotherm snowpack destabilizes and tends towards naturally triggered slides. At high altitudes, take heed of the older snowdrifts and the old snowpack in general.

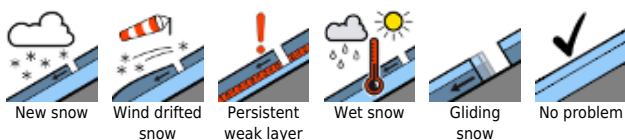
Weather

Thursday will begin with pleasant conditions throughout Styria, but for a few harmless clouds and dust from the Sahara which will disturb the atmosphere and hamper the sunshine somewhat. As of midday in the Northern Alps and Niedere Tauern, convective cloud build-up can be expected, a bit of rainfall is also possible. At 1500 m at midday: +13 degrees; at 2000 m: +8 degrees. Mostly moderate SW winds.

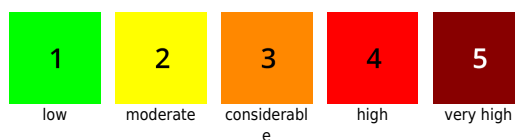
Outlook

On Friday, some clouds, a few showers. Temperatures will drop slightly. At midday +7 degrees at 1500 m, +3 degrees at 2000 m. The wet snow situation will persist due to daytime warming and rainfall from place to place.

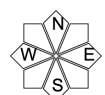
Avalanche problems



Danger ratings

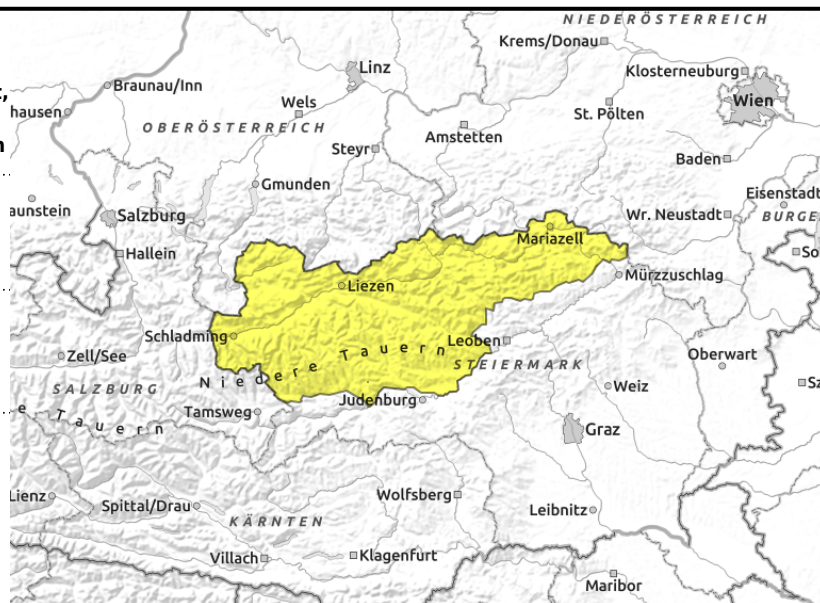
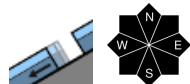
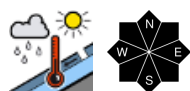


Expositions



14.04.2022, afternoon

Hochschwabgebiet, Eisenerzer Alpen, Ennstaler Alpen, Rottenmanner Tauern, Nördliche Wölzer Tauern, Schladminger Tauern Nord, Dachsteingebiet, Totes Gebirge, Seckauer Tauern, Südliche Wölzer Tauern, Schladminger Tauern Süd, Mürzsteiger Alpen



Daytime increase in avalanche danger to moderate. Wet-snow situation.

Avalanche danger increases from swiftly low to moderate in the course of the day due to mild temperatures and solar radiation. Main danger: naturally triggered or skier-triggered (minimum additional loading) wet-snow avalanches on steep not-yet-discharged slopes. Also, the likelihood of glide-snow avalanches is increasing. Avoid zones below glide cracks. At higher altitudes in steep terrain, older snowdrift accumulations can be triggered as slab avalanches by large additional loading.

Snowpack structure

Due to springtime temperatures and solar radiation, the firmness regained at night is quickly lost. Due to moistness and weness, the largely isotherm snowpack destabilizes and tends towards naturally triggered slides. At high altitudes, take heed of the older snowdrifts and the old snowpack in general.

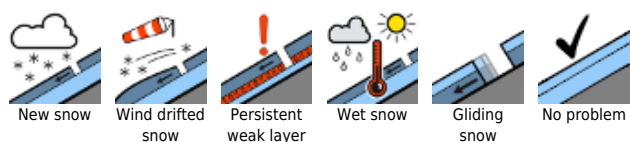
Weather

Thursday will begin with pleasant conditions throughout Styria, but for a few harmless clouds and dust from the Sahara which will disturb the atmosphere and hamper the sunshine somewhat. As of midday in the Northern Alps and Niedere Tauern, convective cloud build-up can be expected, a bit of rainfall is also possible. At 1500 m at midday: +13 degrees; at 2000 m: +8 degrees. Mostly moderate SW winds.

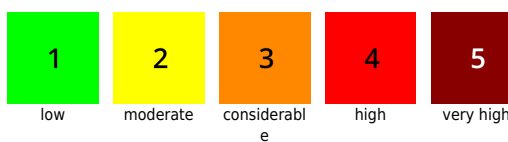
Outlook

On Friday, some clouds, a few showers. Temperatures will drop slightly. At midday +7 degrees at 1500 m, +3 degrees at 2000 m. The wet snow situation will persist due to daytime warming and rainfall from place to place.

Avalanche problems



Danger ratings

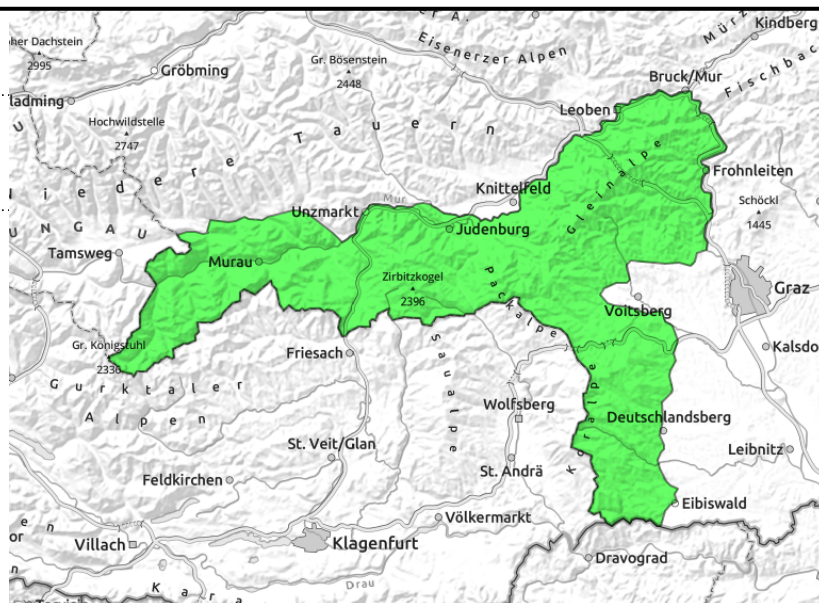
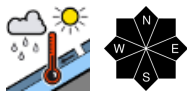


Expositions



14.04.2022

Gurktaler Alpen, Seetaler Alpen, Koralpe, Stub- und Gleinalpe



Low avalanche danger. Wet-snow situation.

Low avalanche danger prevails. Nevertheless, the danger of wet-snow and glide-snow avalanches in steep zones which have not yet discharged increases during the daytime due to solar radiation and rising temperatures.

Snowpack structure

Due to springtime temperatures and solar radiation, the firmness regained at night is quickly lost. Due to moistness and weness, the largely isotherm snowpack destabilizes and tends towards naturally triggered slides. The slopes are becoming bare of snow, backcountry touring possibilities are already limited.

Weather

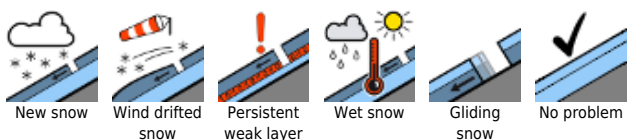
Thursday will begin with pleasant conditions throughout Styria, but for a few harmless clouds and dust from the Sahara which will disturb the atmosphere and hamper the sunshine somewhat. As of midday in the Northern Alps and Niedere Tauern, convective cloud build-up can be expected, a bit of rainfall is also possible. At 1500 m at midday: +13 degrees; at 2000 m: +8 degrees. Mostly moderate SW winds.

Outlook

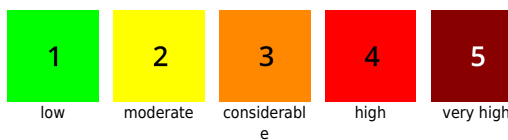
On Friday, some clouds, a few showers. Temperatures will drop slightly. At midday +7 degrees at 1500 m, +3 degrees at 2000 m. The wet snow situation will persist due to daytime warming and rainfall from place to place.

Translated by Jeffrey McCabe, www.creativtrans.com

Avalanche problems



Danger ratings



Expositions

