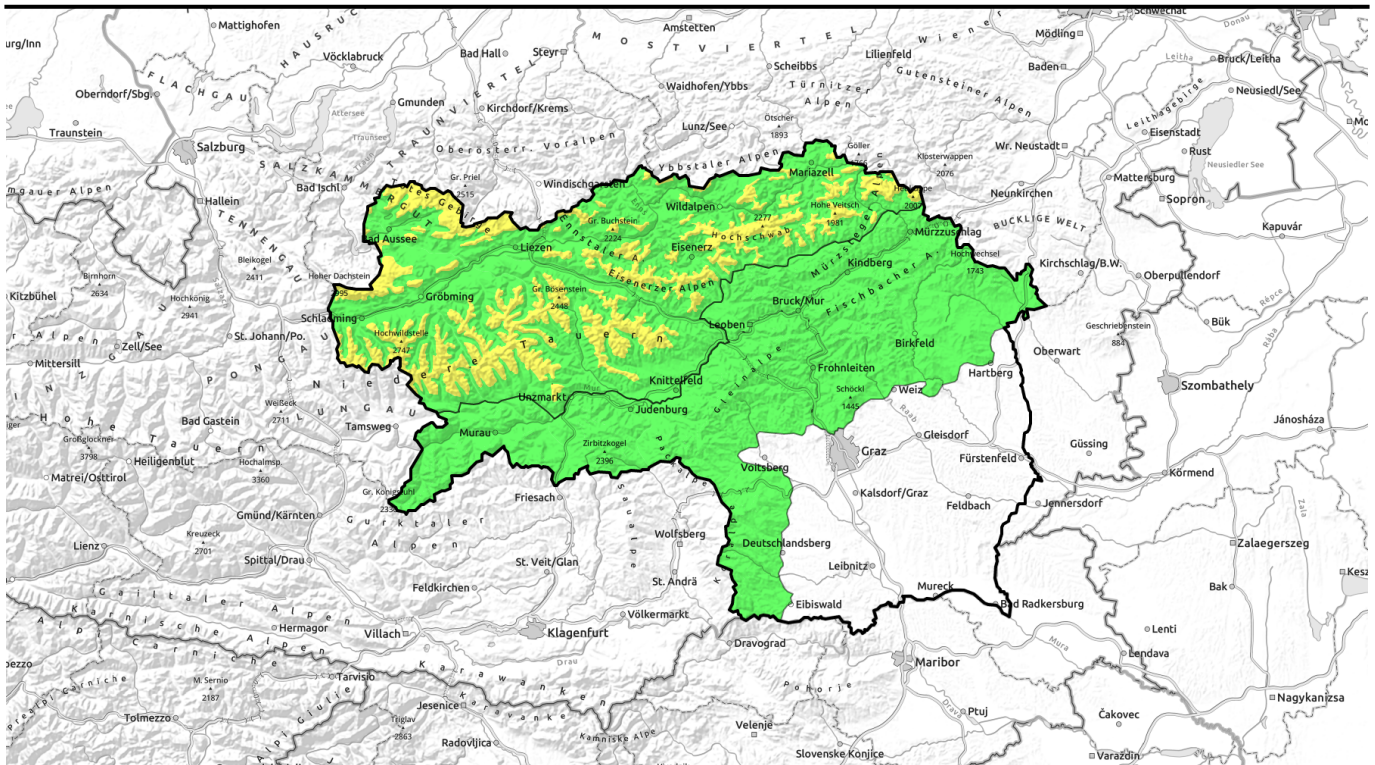


12.04.2022, morning



Increasing wet-snow problem as day progresses



Mürtzaler Alpen, Östliche Fischbacher Alpen und Wechselgebiet, Westliche Fischbacher Alpen und Grazer Bergland, Stub- und Gleinalpe, Koralpe, Seetaler Alpen, Gurktaler Alpen



1800 m

Ennstaler Alpen, Totes Gebirge, Dachsteingebiet, Schladminger Tauern Nord, Nördliche Wölzer Tauern, Schladminger Tauern Süd, Südliche Wölzer Tauern, Seckauer Tauern, Eisenerzer Alpen, Hochschwabgebiet, Mürtzsteger Alpen, Rottenmanner Tauern



Avalanche problems



New snow



Wind drifted snow



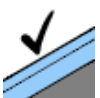
Persistent weak layer



Wet snow



Gliding snow



No problem

Danger ratings



1

low



2

moderate



3

considerable



4

high



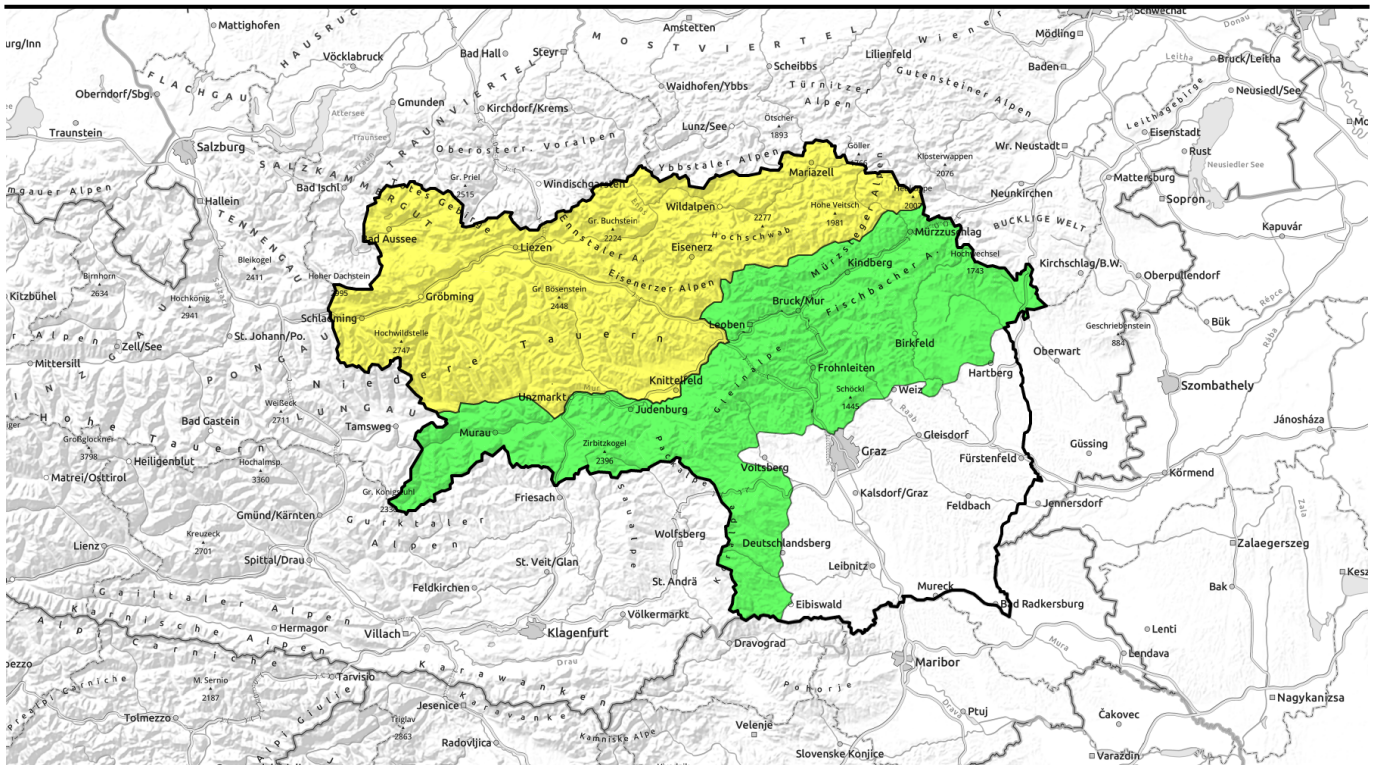
5

very high



Expositions

12.04.2022, afternoon



Tageszeitlicher Anstieg der Nassschneeproblematik!



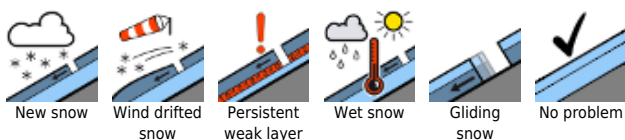
Mürztaler Alpen, Östliche Fischbacher Alpen und Wechselgebiet, Westliche Fischbacher Alpen und Grazer Bergland, Stub- und Gleinalpe, Koralpe, Seetaler Alpen, Gurktaler Alpen



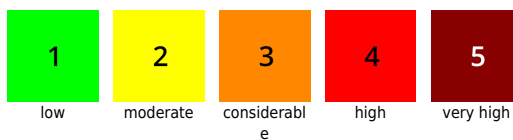
Ennstaler Alpen, Totes Gebirge, Dachsteingebiet, Schladminger Tauern Nord, Nördliche Wölzer Tauern, Schladminger Tauern Süd, Südliche Wölzer Tauern, Seckauer Tauern, Eisenerzer Alpen, Hochschwabgebiet, Mürztegger Alpen, Rottenmanner Tauern



Avalanche problems



Danger ratings

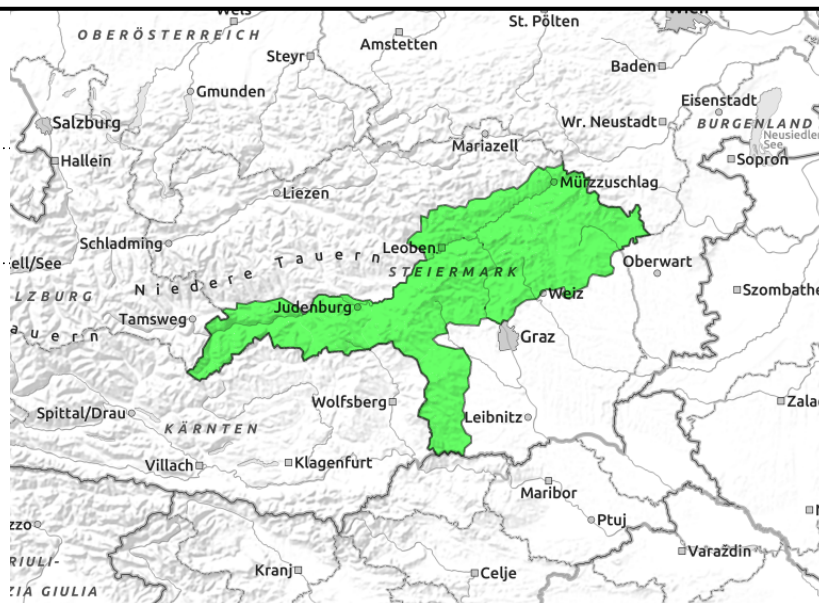
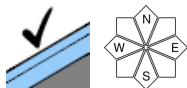


Expositions



12.04.2022

Mürztaler Alpen, Östliche Fischbacher Alpen und Wechselgebiet, Westliche Fischbacher Alpen und Grazer Bergland, Stub- und Gleinalpe, Koralpe, Seetaler Alpen, Gurktaler Alpen



Low avalanche danger - springtime situation

Low avalanche danger. Nevertheless, due to snowdrift patches, isolated danger zones can be expected. They can lead to small naturally triggered wet-snow slides during the course of the day.

Snowpack structure

The old snowpack is largely encrusted and stable. During the course of the day, the shallow snowpack rapidly becomes thoroughly wet.

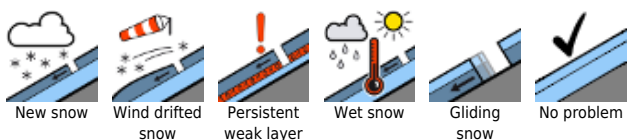
Weather

Tuesday, lots of sunshine, only isolated high-altitude clouds, superb visibility, low air moisture. Winds will be light from W/SW directions, temperatures will rise further. At 2000 m: +8 degrees.

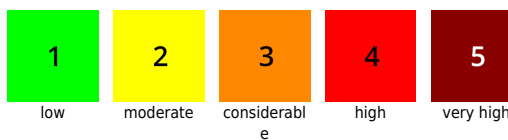
Outlook

Lots of sun, further rising temperatures, light southerly winds on Wednesday. The snowpack is moist up to high altitudes and the slopes are becoming bare.

Avalanche problems



Danger ratings

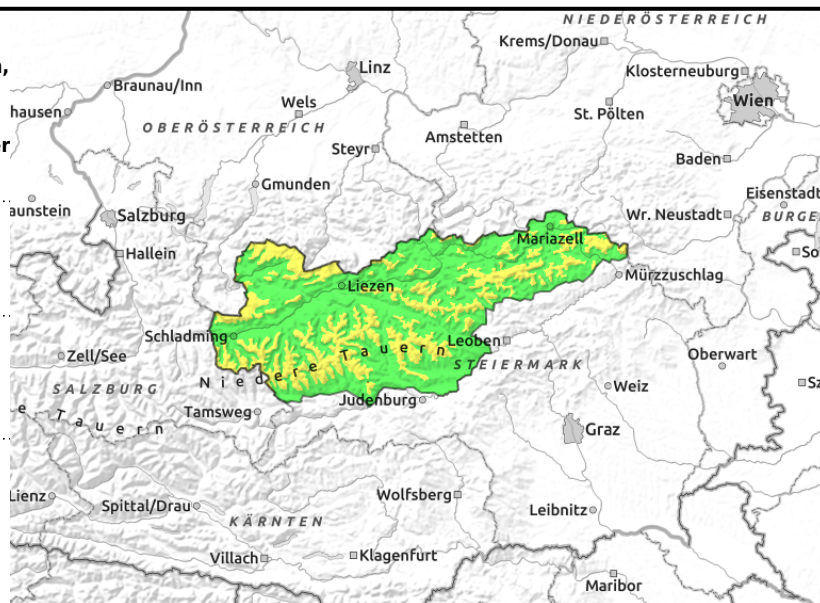
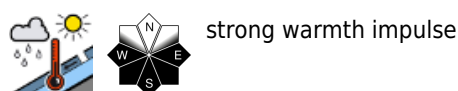
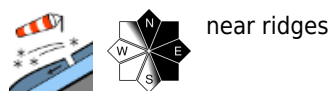


Expositions



12.04.2022, morning

Ennstaler Alpen, Totes Gebirge, Dachsteingebiet, Schladminger Tauern Nord, Nördliche Wölzer Tauern, Schladminger Tauern Süd, Südliche Wölzer Tauern, Seckauer Tauern, Eisenerzer Alpen, Hochschwabgebiet, Mürzsteger Alpen, Rottenmanner Tauern



Snowdrifts at high altitudes and increasing wet-snow problem

Avalanche danger above 1800m is moderate. Below that altitude danger is low, but rises to Level 2 (moderate) during the course of the day. At high altitudes the danger zones, which occur especially in N to SE aspects, are caused by instable drifts. During the course of the day, increasingly frequent naturally triggered loose-snow avalanches occur at all altitudes on extremely steep rocky slopes. Also, wet slabs (both naturally triggered and triggered by skiers) and glide-snow avalanches are possible.

Snowpack structure

The snowpack fundament is isotherm and often moist up to over 2000 m, but largely stable. Due to nocturnal outgoing longwave radiation it was able to regain some firmness. At high altitudes the snowdrifts are still instable, but due to warmth the settling and stabilizing is proceeding apace. Beneath the fresh snow from the weekend there are still weak laers which can be activated by the rising water content inside the snowpack.

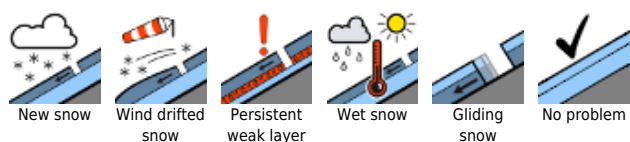
Weather

On Tuesday lots of sunshine, only isolated high-altitude clouds, superb visibility, low air moisture. Winds will be light from W/SW directions, temperatures will rise further. At 2000 m: +8 degrees.

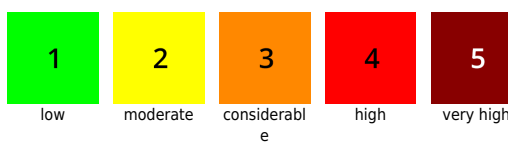
Outlook

Lots of sun, further rising temperatures, light southerly winds on Wednesday. The snowpack is moist up to high altitudes and the slopes are becoming bare.

Avalanche problems



Danger ratings



Expositions



12.04.2022, afternoon

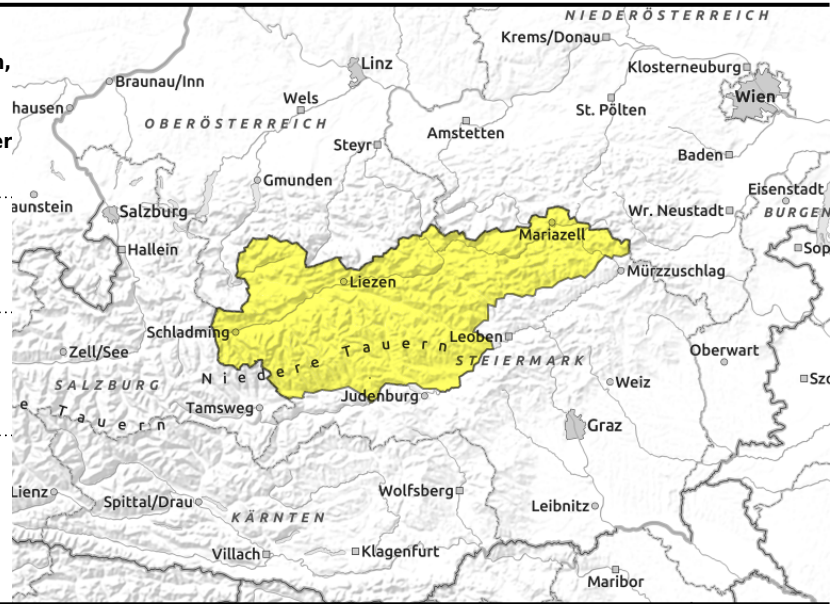
Ennstaler Alpen, Totes Gebirge, Dachsteingebiet, Schladminger Tauern Nord, Nördliche Wölzer Tauern, Schladminger Tauern Süd, Südliche Wölzer Tauern, Seckauer Tauern, Eisenerzer Alpen, Hochschwabgebiet, Mürzsteger Alpen, Rottenmanner Tauern



near ridges



strong warmth impulse



Snowdrifts at high altitudes and increasing wet-snow problem

Avalanche danger above 1800m is moderate. Below that altitude danger is low, but rises to Level 2 (moderate) during the course of the day. At high altitudes the danger zones, which occur especially in N to SE aspects, are caused by instable drifts. During the course of the day, increasingly frequent naturally triggered loose-snow avalanches occur at all altitudes on extremely steep rocky slopes. Also, wet slabs (both naturally triggered and triggered by skiers) and glide-snow avalanches are possible.

Snowpack structure

The snowpack fundament is isotherm and often moist up to over 2000 m, but largely stable. Due to nocturnal outgoing longwave radiation it was able to regain some firmness. At high altitudes the snowdrifts are still instable, but due to warmth the settling and stabilizing is proceeding apace. Beneath the fresh snow from the weekend there are still weak laers which can be activated by the rising water content inside the snowpack.

Weather

On Tuesday lots of sunshine, only isolated high-altitude clouds, superb visibility, low air moisture. Winds will be light from W/SW directions, temperatures will rise further. At 2000 m: +8 degrees.

Outlook

Lots of sun, further rising temperatures, light southerly winds on Wednesday. The snowpack is moist up to high altitudes and the slopes are becoming bare.

Translated by Jeffrey McCabe, www.creativtrans.com

Avalanche problems



New snow



Wind drifted snow



Persistent weak layer



Wet snow



Gliding snow



No problem

Danger ratings



1

low



2

moderate



3

considerable



4

high



5

very high

Expositions

