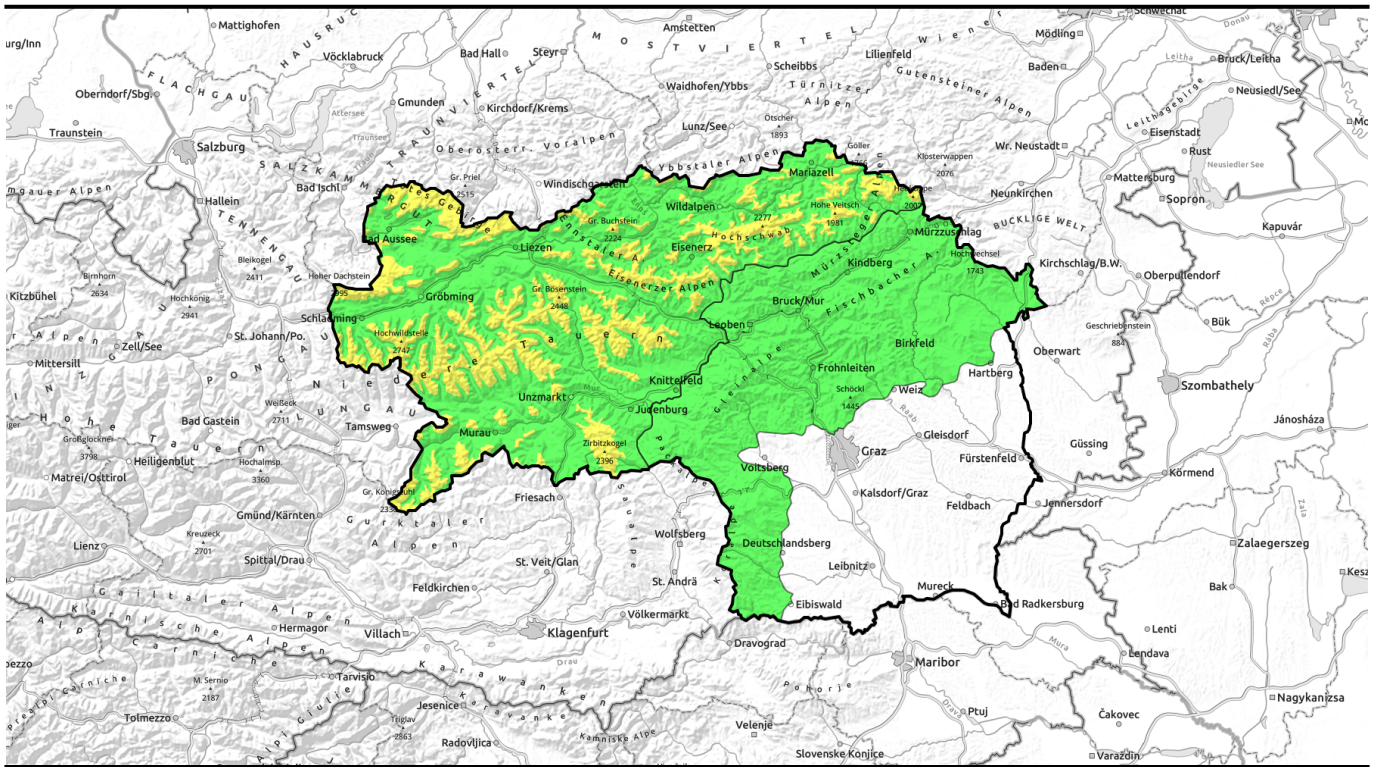


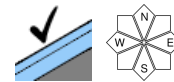
# 11.04.2022, morning



## Instable snowdrifts at high altitude, increasing wet-snow problem during daytime



Mürztaler Alpen, Östliche Fischbacher Alpen und Wechselgebiet, Westliche Fischbacher Alpen und Grazer Bergland, Stub- und Gleinalpe, Koralpe

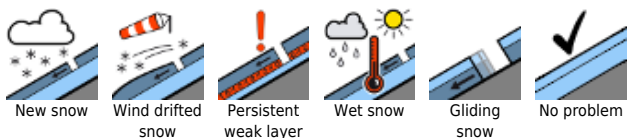


forestline

Ennstaler Alpen, Totes Gebirge, Dachsteingebiet, Schladminger Tauern Nord, Nördliche Wölzer Tauern, Schladminger Tauern Süd, Gurktaler Alpen, Südliche Wölzer Tauern, Seckauer Tauern, Eisenerzer Alpen, Hochschwabgebiet, Mürztsteger Alpen, Seetaler Alpen, Rottenmanner Tauern



### Avalanche problems



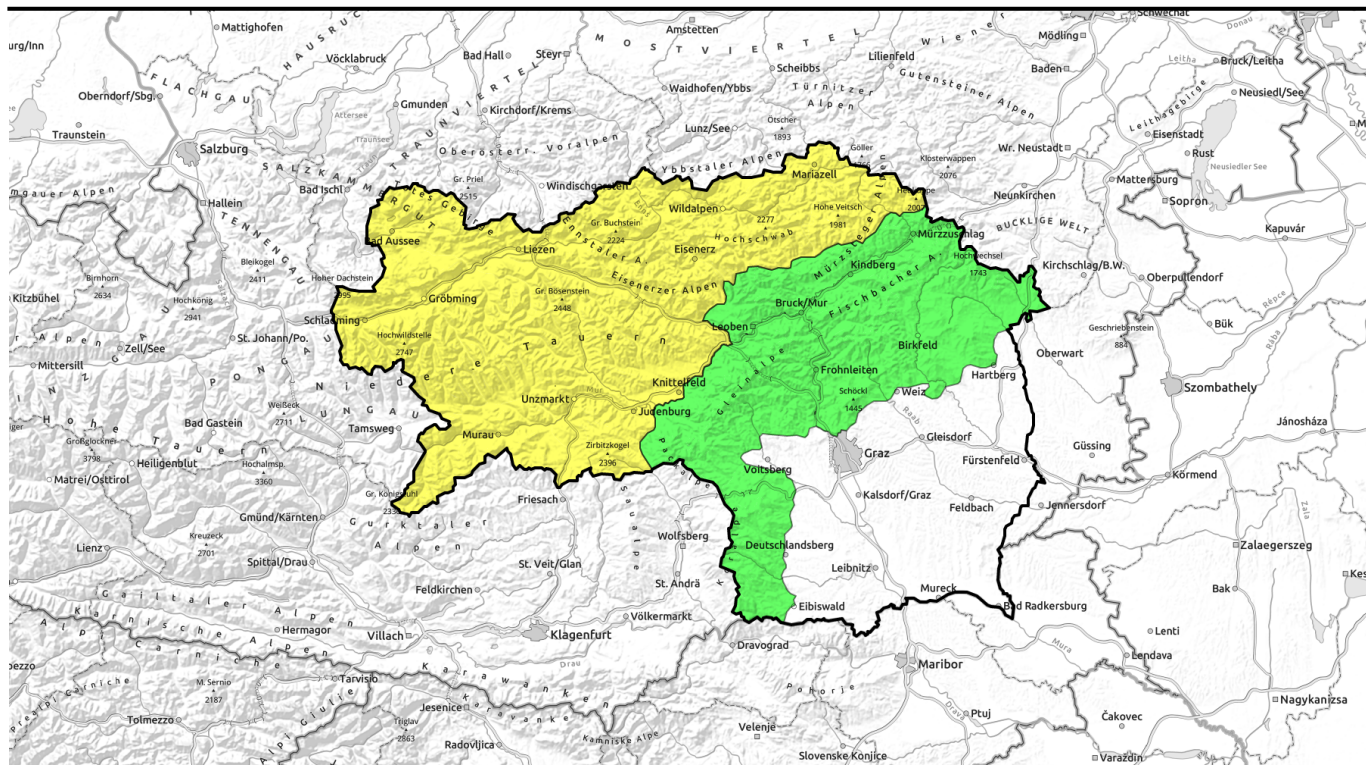
### Danger ratings



### Expositions



# 11.04.2022, afternoon



## In den Hochlagen noch instabiler Triebsschnee, im Tagesverlauf zunehmend Nassschneeproblematik



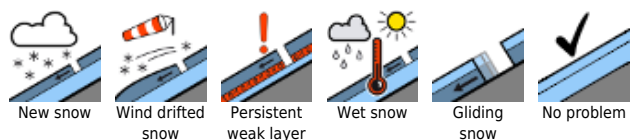
Mürztaler Alpen, Östliche Fischbacher Alpen und Wechselgebiet, Westliche Fischbacher Alpen und Grazer Bergland, Stub- und Gleinalpe, Korralpe



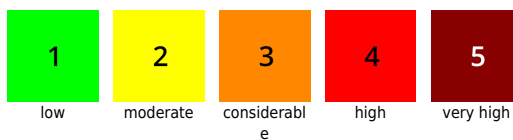
Ennstaler Alpen, Totes Gebirge, Dachsteingebiet, Schladminger Tauern Nord, Nördliche Wölzer Tauern, Schladminger Tauern Süd, Gurktaler Alpen, Südliche Wölzer Tauern, Seckauer Tauern, Eisenerzer Alpen, Hochschwabgebiet, Mürzsteger Alpen, Seetaler Alpen, Rottenmanner Tauern



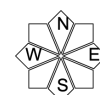
### Avalanche problems



### Danger ratings

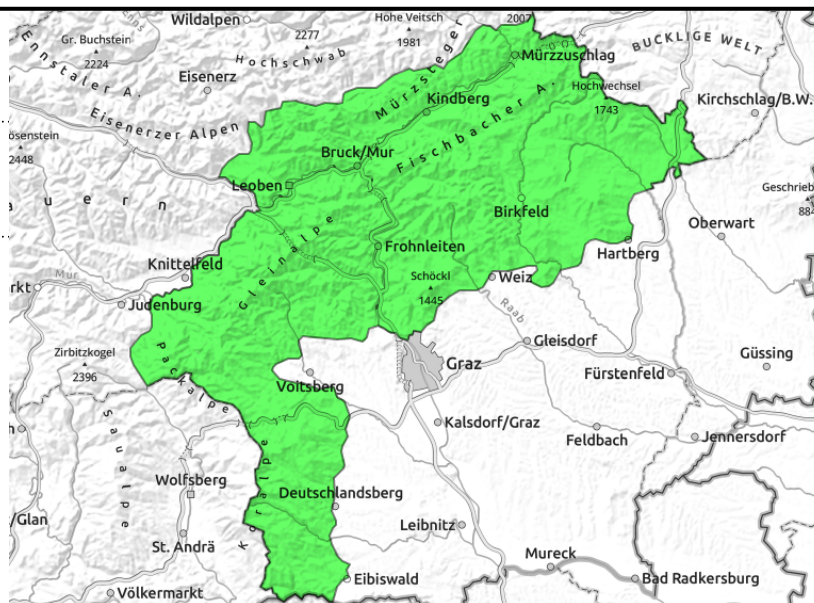
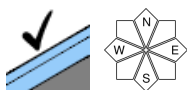


### Expositions



**11.04.2022**

**Mürztaler Alpen, Östliche Fischbacher Alpen und Wechselgebiet, Westliche Fischbacher Alpen und Grazer Bergland, Stub- und Gleinalpe, Koralpe**



**Low avalanche danger. Snow increasingly wet.**

Low avalanche danger. Nevertheless, due to snowdrift patches, isolated danger zones can be expected. They can lead to small naturally triggered wet-snow slides during the course of the day.

**Snowpack structure**

The old snowpack is largely encrusted and hard. During the course of the day, the shallow snowpack rapidly becomes thoroughly wet.

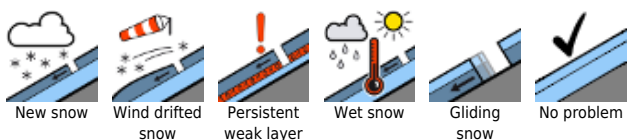
**Weather**

On Monday, hardly any wind, mostly sunshine. In the afternoon a few clouds, particularly in eastern regions, the peaks will remain free. Milder. At 2000 m: from -5 degrees in early morning to +2 degrees in the evening.

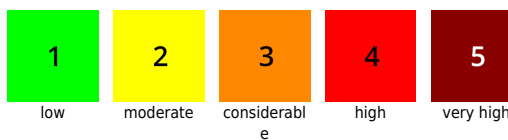
**Outlook**

Tuesday will bring mild temperatures, lots of sunshine, good visibility. Snowdrift problem will rapidly slacken off, wet snow become the main avalanche problem.

**Avalanche problems**



**Danger ratings**

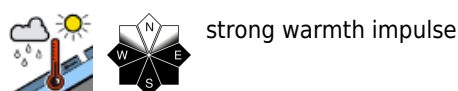
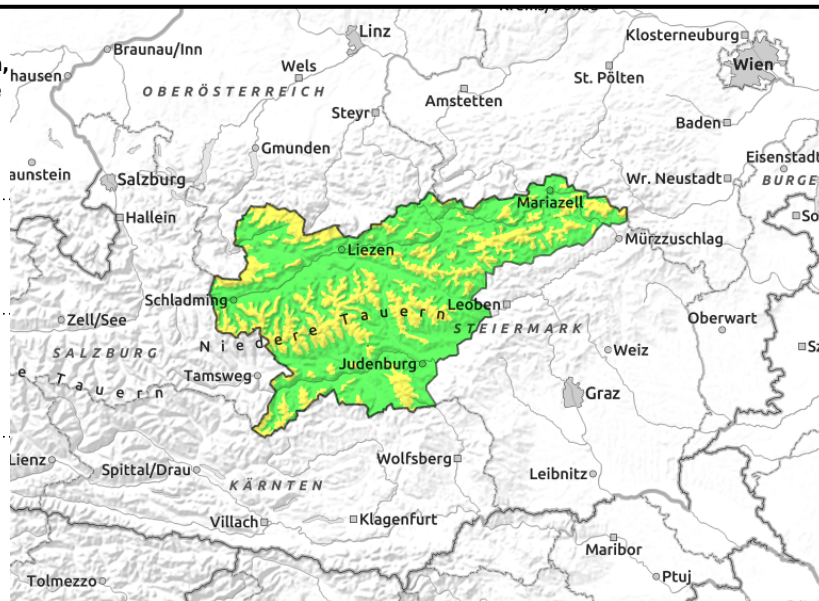


**Expositions**



# 11.04.2022, morning

Ennstaler Alpen, Totes Gebirge, Dachsteingebiet, Schladminger Tauern Nord, Nördliche Wölzer Tauern, Schladminger Tauern Süd, Gurktaler Alpen, Südliche Wölzer Tauern, Seckauer Tauern, Eisenerzer Alpen, Hochschwabgebiet, Mürzsteiger Alpen, Seetaler Alpen, Rottenmanner Tauern



## Moderate avalanche danger due to combination of snowdrift and wet-snow problems

Above the treeline danger is moderate due to instable snowdrifts. This applies particularly to wind-loaded E/S aspects. In the course of the day, warmth will create moderate danger at all altitudes. In extremely steep rocky terrain, naturally triggered loose-snow avalanches can be expected. On south-facing slopes, also wet-snow slab avalanches (both naturally triggered and by additional loading) are possible.

### Snowpack structure

Beneath the fresh snow from last weekend, weak layers have formed which, however, cannot easily be triggered. The fundament is isotherm up to over 2000 m, often moist, but mostly stable. On Monday, rising temperatures and solar radiation will moisten the snowpack from above, which can activate more deeply embedded layers.

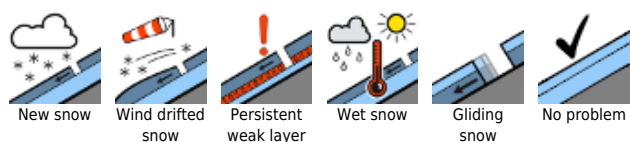
### Weather

On Monday, hardly any wind, mostly sunshine. In the afternoon a few clouds, particularly in eastern regions, the peaks will remain free. Milder. At 2000 m: from -5 degrees in early morning to +2 degrees in the evening.

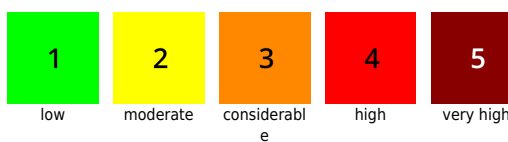
### Outlook

Tuesday will bring mild temperatures, lots of sunshine, good visibility. Snowdrift problem will rapidly slacken off, wet snow become the main avalanche problem.

#### Avalanche problems



#### Danger ratings



#### Expositions



# 11.04.2022, afternoon

Ennstaler Alpen, Totes Gebirge, Dachsteingebiet, Schladminger Tauern Nord, Nördliche Wölzer Tauern, Schladminger Tauern Süd, Gurktaler Alpen, Südliche Wölzer Tauern, Seckauer Tauern, Eisenerzer Alpen, Hochschwabgebiet, Mürzsteger Alpen, Seetaler Alpen, Rottenmanner Tauern



above treeline



strong warmth impulse

## Moderate avalanche danger due to combination of snowdrift and wet-snow problems

Above the treeline danger is moderate due to instable snowdrifts. This applies particularly to wind-loaded E/S aspects. In the course of the day, warmth will create moderate danger at all altitudes. In extremely steep rocky terrain, naturally triggered loose-snow avalanches can be expected. On south-facing slopes, also wet-snow slab avalanches (both naturally triggered and by additional loading) are possible.

### Snowpack structure

Beneath the fresh snow from last weekend, weak layers have formed which, however, cannot easily be triggered. The fundament is isotherm up to over 2000 m, often moist, but mostly stable. On Monday, rising temperatures and solar radiation will moisten the snowpack from above, which can activate more deeply embedded layers.

### Weather

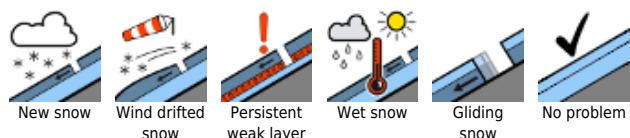
On Monday, hardly any wind, mostly sunshine. In the afternoon a few clouds, particularly in eastern regions, the peaks will remain free. Milder. At 2000 m: from -5 degrees in early morning to +2 degrees in the evening.

### Outlook

Tuesday will bring mild temperatures, lots of sunshine, good visibility. Snowdrift problem will rapidly slacken off, wet snow become the main avalanche problem.

Translated by Jeffrey McCabe, [www.creativtrans.com](http://www.creativtrans.com)

#### Avalanche problems



#### Danger ratings



#### Expositions

