

## Snowdrifts at high altitudes



Mürztaler Alpen, Östliche Fischbacher Alpen und Wechselgebiet, Westliche Fischbacher Alpen und Grazer Bergland, Stub- und Gleinalpe, Korralpe



forestline

Ennstaler Alpen, Totes Gebirge, Dachsteingebiet



forestline

Schladminger Tauern Nord, Schladminger Tauern Süd, Nördliche Wölzer Tauern, Südliche Wölzer Tauern, Seckauer Tauern, Rottenmanner Tauern, Eisenerzer Alpen, Gurktaler Alpen, Seetaler Alpen, Hochschwabgebiet, Mürzsteger Alpen



### Avalanche problems



New snow



Wind drifted snow



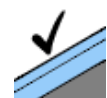
Persistent weak layer



Wet snow



Gliding snow



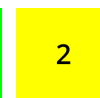
No problem

### Danger ratings



1

low



2

moderate



3

considerable



4

high



5

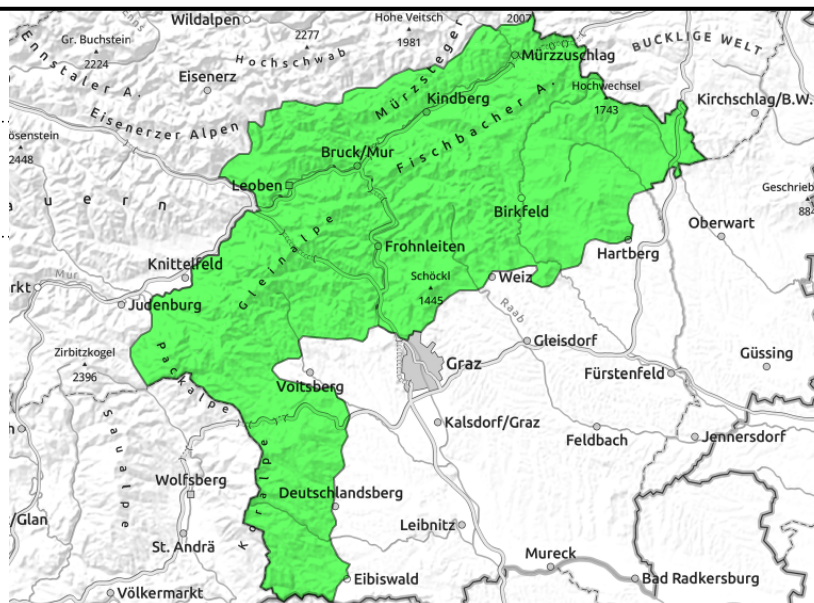
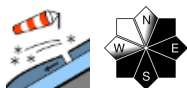
very high

### Expositions



**10.04.2022**

**Mürztaler Alpen, Östliche Fischbacher Alpen und Wechselgebiet, Westliche Fischbacher Alpen und Grazer Bergland, Stub- und Gleinalpe, Koralpe**



**Low avalanche danger but isolated avalanche prone locations from drifts**

Low avalanche danger. Nevertheless, due to storm winds and some fresh snow, isolated danger zones can be expected. They occur as small cavities and behind protruberances in E/S aspects.

**Snowpack structure**

The old snowpack is largely encrusted and hard. Locally at high altitudes, small snowdrifts have accumulated.

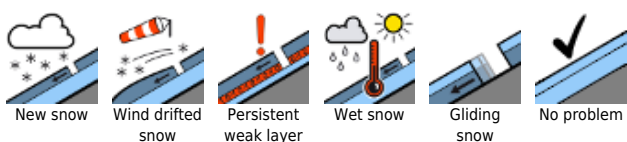
**Weather**

Palm Sunday will begin with sunshine in the rimline ranges, in the afternoon cloud cover will increase but tendency to showers will be low. Winds stormy from the northwest in the morning, then will slacken off. At 2000 m: -7 degrees.

**Outlook**

On Monday, hardly any wind, frequent sunshine. In the afternoon, a few clouds, most peaks will be free. Further west, more sunshine. Milder. At 2000 m: from -5 degrees in early morning to +2 degrees in the evening. The snowdrift problem will recede.

**Avalanche problems**



**Danger ratings**



**Expositions**

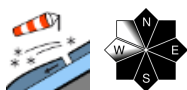


**10.04.2022**

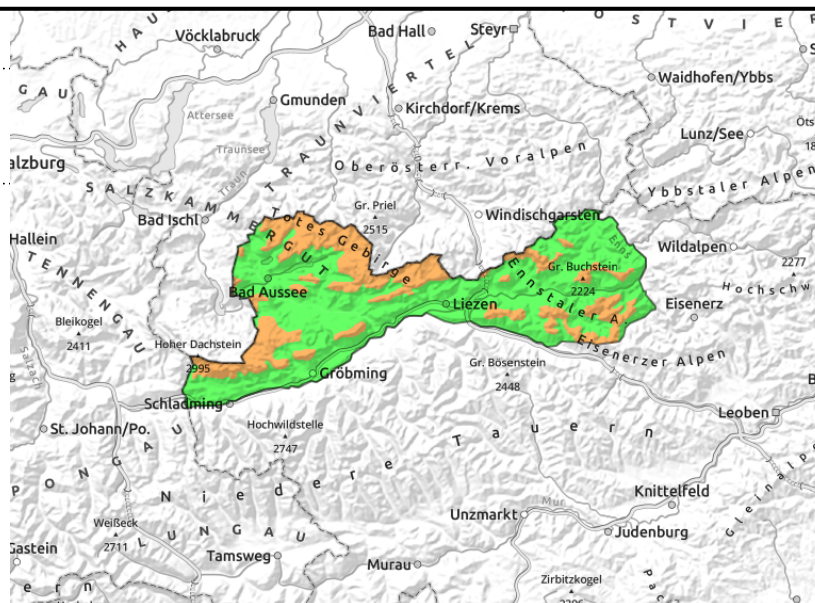
**Ennstaler Alpen, Totes Gebirge, Dachsteingebiet**



forestline



above treeline



**Fresh snowdrifts. Considerable danger at high altitudes.**

Above 1800 m danger is considerable, below that altitude danger is moderate. Danger zones: fresh snowdrift accumulations at high altitudes in E/S aspects, where one sole skier can trigger a slab avalanche. Poor visibility make evaluation more difficult on-site.

**Snowpack structure**

Beneath the fresh snow from last weekend, weak layers have formed which, however, cannot easily be triggered. On Friday the snowpack was moistened by rainfall, on Saturday blanketed by fresh snow, which led to a destabilized snowpack and snowdrifts. At low altitudes the snowpack is melt-freeze encrusted, below that moist down to the ground.

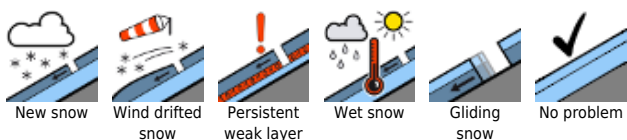
**Weather**

Palm Sunday will begin with sunshine in the rimline ranges, in the afternoon cloud cover will increase but tendency to showers will be low. Winds stormy from the northwest in the morning, then will slacken off. At 2000 m: -7 degrees.

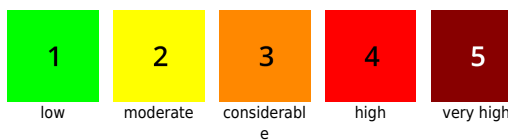
**Outlook**

On Monday, hardly any wind, frequent sunshine. In the afternoon, a few clouds, most peaks will be free. Further west, more sunshine. Milder. At 2000 m: from -5 degrees in early morning to +2 degrees in the evening. The snowdrift problem will recede.

**Avalanche problems**



**Danger ratings**

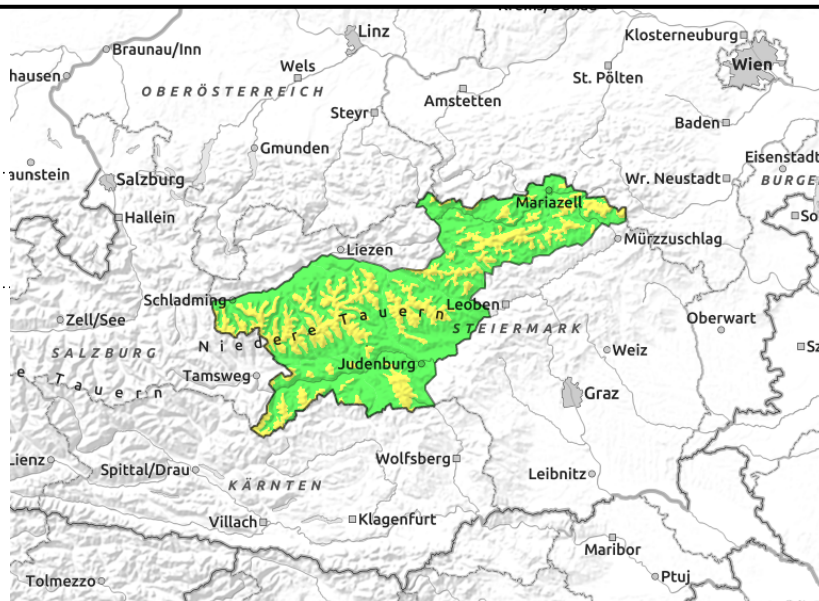
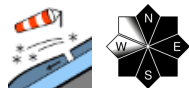


**Expositions**



**10.04.2022**

Schladminger Tauern Nord, Schladminger Tauern Süd, Nördliche Wölzer Tauern, Südliche Wölzer Tauern, Seckauer Tauern, Rottenmanner Tauern, Eisenerzer Alpen, Gurktaler Alpen, Seetaler Alpen, Hochschwabgebiet, Mürzsteger Alpen



## Fresh snowdrifts. Moderate danger at high altitudes

Above the treeline danger is moderate, below that altitude danger is low. Danger zones: fresh snowdrift accumulations at high altitudes in E/S aspects, where one sole skier can trigger a slab avalanche. Poor visibility make evaluation more difficult on-site.

### Snowpack structure

Beneath the fresh snow from last weekend, weak layers have formed which, however, cannot easily be triggered. Atop them on Friday night, fresh, instable snowdrifts were deposited. At low altitudes the snowpack is moist down to the ground.

### Weather

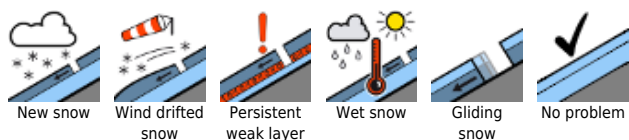
Palm Sunday will begin with sunshine in the rimline ranges, in the afternoon cloud cover will increase but tendency to showers will be low. Winds stormy from the northwest in the morning, then will slacken off. At 2000 m: -7 degrees.

### Outlook

On Monday, hardly any wind, frequent sunshine. In the afternoon, a few clouds, most peaks will be free. Further west, more sunshine. Milder. At 2000 m: from -5 degrees in early morning to +2 degrees in the evening. The snowdrift problem will recede.

Translated by Jeffrey McCabe, [www.creativtrans.com](http://www.creativtrans.com)

#### Avalanche problems



#### Danger ratings



#### Expositions

