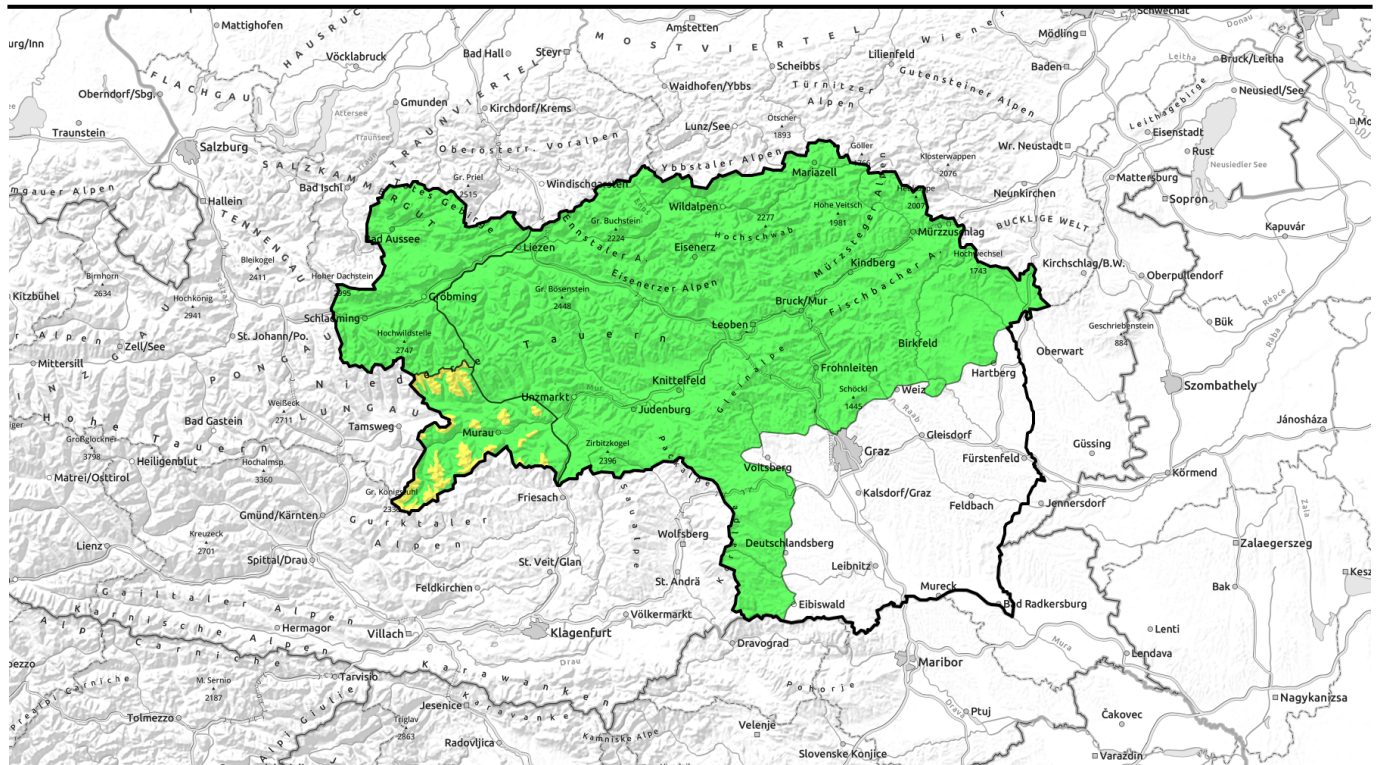








02.04.2022, morning



Favourable conditions, some fresh snow, heavy cloud cover

	<p>Seckauer Tauern, Rottenmanner Tauern, Nördliche Wölzer Tauern, Südliche Wölzer Tauern, Seetaler Alpen, Stub- und Gleinalpe, Koralpe, Ennstaler Alpen, Eisenerzer Alpen, Hochschwabgebiet, Mürtzsteger Alpen, Mürtztaler Alpen, Östliche Fischbacher Alpen und Wechselgebiet, Westliche Fischbacher Alpen und Grazer Bergland</p>	
	<p>Totes Gebirge, Dachsteingebiet, Schladminger Tauern Nord</p>	
	<p>Schladminger Tauern Süd, Gurktaler Alpen</p>	

Avalanche problems



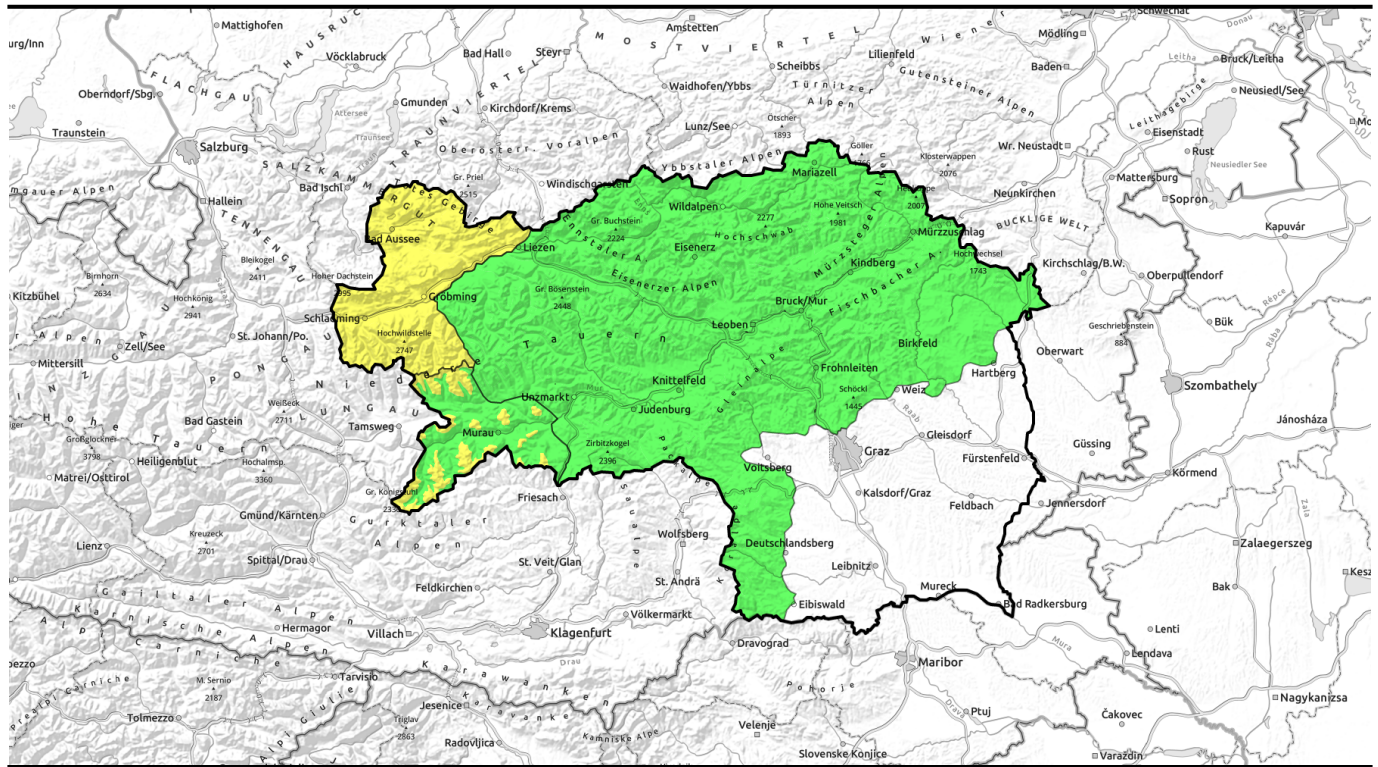
Danger ratings




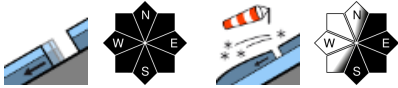




Expositions



02.04.2022, afternoon

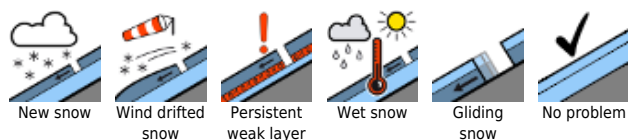


Günstige Bedingungen, etwas Neuschnee, dichte Wolken

	<p>Seckauer Tauern, Rottenanner Tauern, Nördliche Wölzer Tauern, Südliche Wölzer Tauern, Seetaler Alpen, Stub- und Gleinalpe, Korralpe, Ennstaler Alpen, Eisenerzer Alpen, Hochschwabgebiet, Mürztsteiger Alpen, Mürztaler Alpen, Östliche Fischbacher Alpen und Wechselgebiet, Westliche Fischbacher Alpen und Grazer Bergland</p>	
	<p>Totes Gebirge, Dachsteingebiet, Schladminger Tauern Nord</p>	
	<p>Schladminger Tauern Süd, Gurktaler Alpen</p>	

1800 m

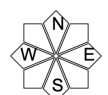
Avalanche problems



Danger ratings



Expositions



02.04.2022

Seckauer Tauern, Rottenmanner Tauern, Nördliche Wölzer Tauern, Südliche Wölzer Tauern, Seetaler Alpen, Stub- und Gleinalpe, Koralpe, Ennstaler Alpen, Eisenerzer Alpen, Hochschwabgebiet, Mürzsteiger Alpen, Mürztaler Alpen, Östliche Fischbacher Alpen und Wechselgebiet, Westliche Fischbacher Alpen und Grazer Bergland



seldom, in extremely steep terrain



Intensifying northerly winds in afternoon: snowdrift accumulations. Poor visibility!

The fresh snow from Thursday is bonding well with the old snow, no avalanche prone locations are being formed. Also on Saturday the fresh snow will become relevant to avalanches only in the afternoon as intensifying winds transport the snow and generate new drifts. Naturally triggered glide-snow avalanches are still possible, but are becoming less frequent. In entry zones into steep north-facing gullies a slab could trigger in the trigger-sensitive old snow, possibly.

Snowpack structure

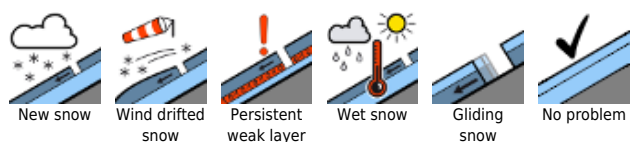
On Thursday above 1700 m, up to 15 cm fresh snow fell amid light wind influence, it bonds well with the old snowpack. The descending temperatures will stabilize the snowpack, but in transitions the snow is moist-to-wet down to the ground. At intermediate altitudes the slopes are bare of snow. On Saturday, more fresh snow is anticipated, it will be cold and capable of snow transport. At high altitudes in steep north-facing gullies there are still trigger-sensitive weak layer of faceted crystals (persistent weak layer).

Weather

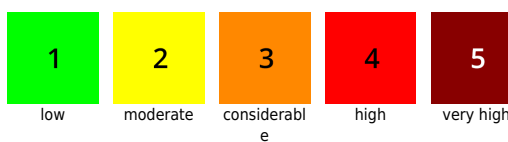
The occlusion of a low pressure front over the Adriatic is determining the weather in the Eastern Alps. From the northwest, arctic air masses are moving in. On Saturday, the mountains will be quite wintery. Most peaks will be shrouded in fog, snowfall and rainfall will repeatedly come down, most likely along the Northern Alps and in the Gurktal Alps. The precipitation will be minor, the snowfall level on the northern flank of the Alps will be at valley floor, in the southern regions at about 900 m. In the Upper Styrian massifs it will be colder: at midday at -9 degrees at 2000 m; -6 degrees at 1500 m. Somewhat milder on the southern flank of the Alps: -6 and -3 degrees. Winds will be light to brisk, shifting from easterly to northwesterly during the course of the day.

Also on Sunday, heavy low-lying cloud will dominate, the sun will be rare. On the northern flank of the Alps, some snowfall and low temperatures, a strong-to-stormy NW wind on the eastern rim of the Alps.

Avalanche problems



Danger ratings



Expositions

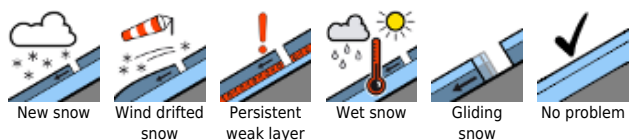


02.04.2022

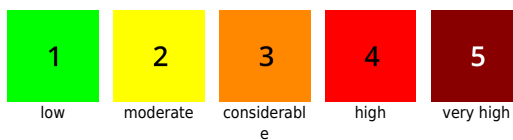
Outlook

Starting on Sunday, the snowdrift problem will come to the forefront.

Avalanche problems



Danger ratings

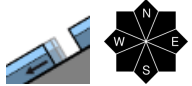
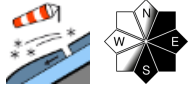


Expositions

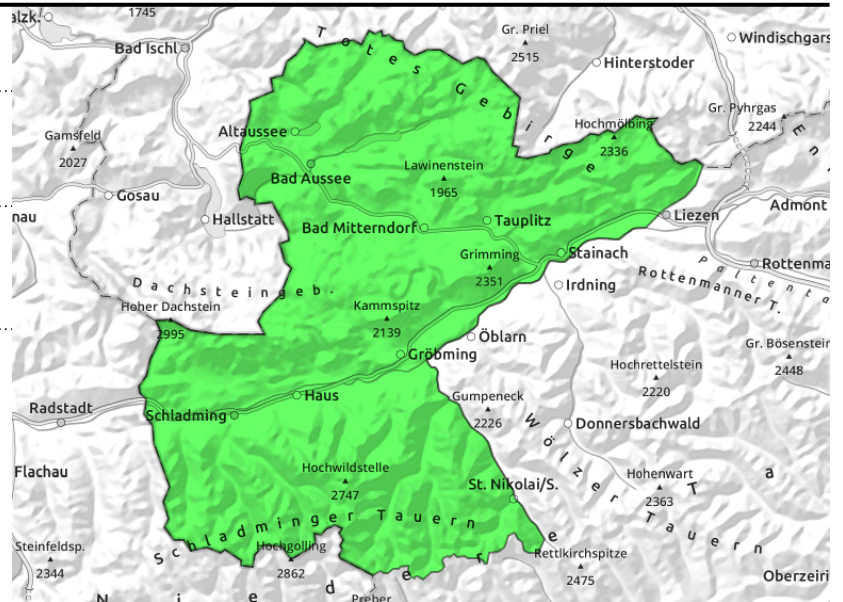


02.04.2022, morning

Totes Gebirge, Dachsteingebiet, Schladminger Tauern Nord



seldom, in extremely steep terrain



Intensifying northerly winds in afternoon: snowdrift accumulations. Poor visibility!

The fresh snow from Thursday is bonding well with the old snow, no avalanche prone locations are being formed. Also on Saturday the fresh snow will become relevant to avalanches only in the afternoon as intensifying winds transport the snow and generate new drifts. With large additional loading, slab avalanches can become more likely. Naturally triggered glide-snow avalanches are still possible, but are becoming less frequent. In entry zones into steep north-facing gullies a slab could trigger in the trigger-sensitive old snow, possibly.

Snowpack structure

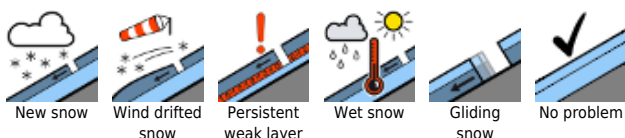
On Thursday above 1700 m, up to 15 cm fresh snow fell amid light wind influence, it bonds well with the old snowpack. The descending temperatures will stabilize the snowpack, but in transitions the snow is moist-to-wet down to the ground. At intermediate altitudes the slopes are bare of snow. On Saturday, more fresh snow is anticipated, it will be cold and capable of snow transport. At high altitudes in steep north-facing gullies there are still trigger-sensitive weak layer of faceted crystals (persistent weak layer).

Weather

The occlusion of a low pressure front over the Adriatic is determining the weather in the Eastern Alps. From the northwest, arctic air masses are moving in. On Saturday, the mountains will be quite wintery. Most peaks will be shrouded in fog, snowfall and rainfall will repeatedly come down, most likely along the Northern Alps and in the Gurktal Alps. The precipitation will be minor, the snowfall level on the northern flank of the Alps will be at valley floor, in the southern regions at about 900 m. In the Upper Styrian massifs it will be colder: at midday at -9 degrees at 2000 m; -6 degrees at 1500 m. Somewhat milder on the southern flank of the Alps: -6 and -3 degrees. Winds will be light to brisk, shifting from easterly to northwesterly during the course of the day.

Also on Sunday, heavy low-lying cloud will dominate, the sun will be rare. On the northern flank of the Alps, some snowfall and low temperatures, a strong-to-stormy NW wind on the eastern rim of the Alps.

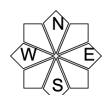
Avalanche problems



Danger ratings



Expositions

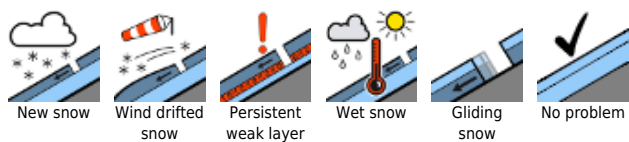


02.04.2022, morning

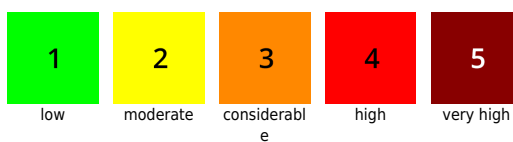
Outlook

Starting on Sunday, the snowdrift problem will come to the forefront.

Avalanche problems



Danger ratings

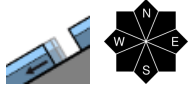
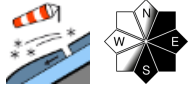


Expositions

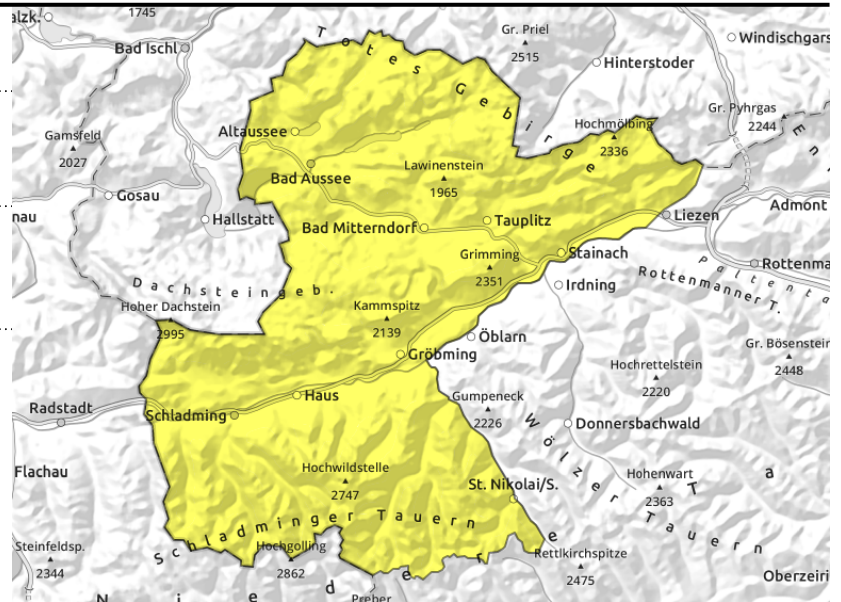


02.04.2022, afternoon

Totes Gebirge, Dachsteingebiet, Schladminger Tauern Nord



seldom, in extremely steep terrain



Intensifying northerly winds in afternoon: snowdrift accumulations. Poor visibility!

The fresh snow from Thursday is bonding well with the old snow, no avalanche prone locations are being formed. Also on Saturday the fresh snow will become relevant to avalanches only in the afternoon as intensifying winds transport the snow and generate new drifts. With large additional loading, slab avalanches can become more likely. Naturally triggered glide-snow avalanches are still possible, but are becoming less frequent. In entry zones into steep north-facing gullies a slab could trigger in the trigger-sensitive old snow, possibly.

Snowpack structure

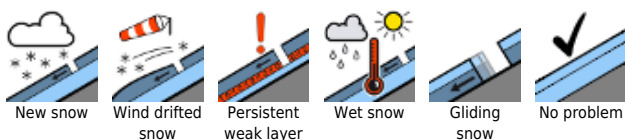
On Thursday above 1700 m, up to 15 cm fresh snow fell amid light wind influence, it bonds well with the old snowpack. The descending temperatures will stabilize the snowpack, but in transitions the snow is moist-to-wet down to the ground. At intermediate altitudes the slopes are bare of snow. On Saturday, more fresh snow is anticipated, it will be cold and capable of snow transport. At high altitudes in steep north-facing gullies there are still trigger-sensitive weak layer of faceted crystals (persistent weak layer).

Weather

The occlusion of a low pressure front over the Adriatic is determining the weather in the Eastern Alps. From the northwest, arctic air masses are moving in. On Saturday, the mountains will be quite wintery. Most peaks will be shrouded in fog, snowfall and rainfall will repeatedly come down, most likely along the Northern Alps and in the Gurktal Alps. The precipitation will be minor, the snowfall level on the northern flank of the Alps will be at valley floor, in the southern regions at about 900 m. In the Upper Styrian massifs it will be colder: at midday at -9 degrees at 2000 m; -6 degrees at 1500 m. Somewhat milder on the southern flank of the Alps: -6 and -3 degrees. Winds will be light to brisk, shifting from easterly to northwesterly during the course of the day.

Also on Sunday, heavy low-lying cloud will dominate, the sun will be rare. On the northern flank of the Alps, some snowfall and low temperatures, a strong-to-stormy NW wind on the eastern rim of the Alps.

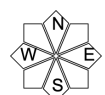
Avalanche problems



Danger ratings



Expositions

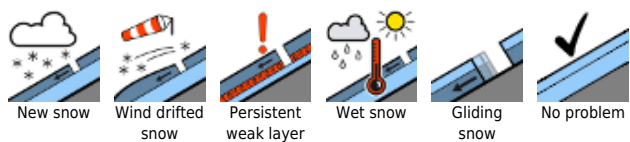


02.04.2022, afternoon

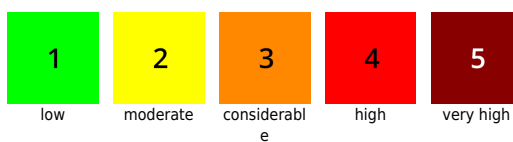
Outlook

Starting on Sunday, the snowdrift problem will come to the forefront.

Avalanche problems



Danger ratings

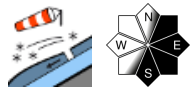


Expositions

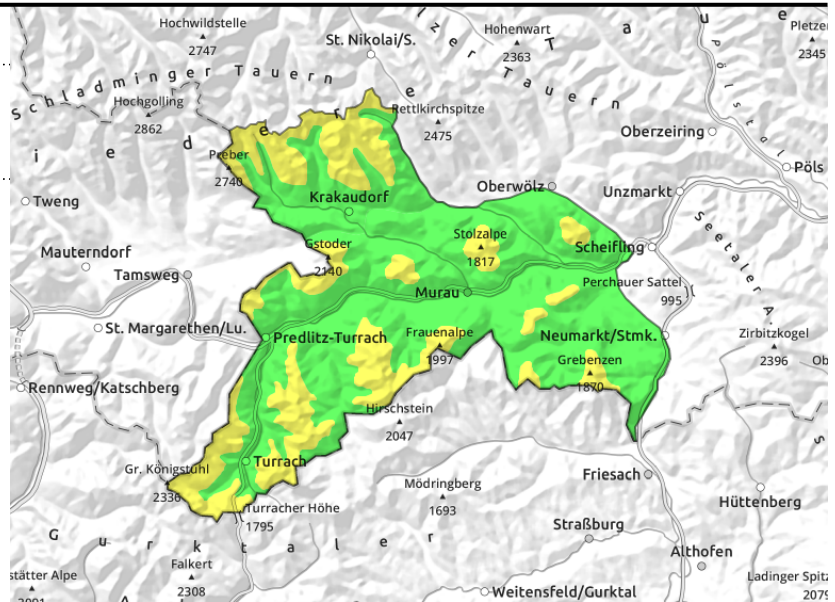


02.04.2022

Schladminger Tauern Süd, Gurktaler Alpen

near ridges, behind protruberances, thin, small snowdrift masses



Poor visibility makes assessing avalanche risks on-site more difficult

Avalanche danger above 1800 m is MODERATE, below that altitude danger is LOW. Northerly winds will generate fresh snowdrift accumulations during the course of the day in extended southern aspects which can be triggered even by the weight of one sole skier with ascending altitude, but will remain small sized. Isolated small-to-medium loose-snow avalanches are possible on extremely steep slopes.

In highly isolated cases, glide-snow avalanches are still possible in these low temperatures.

Snowpack structure

The old snowpack is compact, and moist/wet up to high altitudes. With ascending altitude the bonding of fresh snow/drifts to the old snowpack worsens. The layer borderlines between recent layers of fresh fallen snow could be fracture points. Also the borderlines to the old snowpack in high alpine regions.

Weather

The occlusion of a low pressure front over the Adriatic is determining the weather in the Eastern Alps. From the northwest, arctic air masses are moving in. On Saturday, the mountains will be quite wintery. Most peaks will be shrouded in fog, snowfall and rainfall will repeatedly come down, most likely along the Northern Alps and in the Gurktal Alps. The precipitation will be minor, the snowfall level on the northern flank of the Alps will be at valley floor, in the southern regions at about 900 m. In the Upper Styrian massifs it will be colder: at midday at -9 degrees at 2000 m; -6 degrees at 1500 m. Somewhat milder on the southern flank of the Alps: -6 and -3 degrees. Winds will be light to brisk, shifting from easterly to northwesterly during the course of the day.

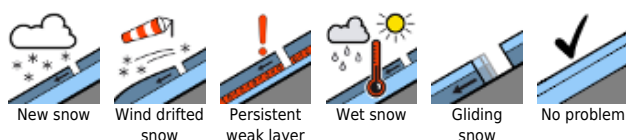
Also on Sunday, heavy low-lying cloud will dominate, the sun will be rare. On the northern flank of the Alps, some snowfall and low temperatures, a strong-to-stormy NW wind on the eastern rim of the Alps.

Outlook

Starting on Sunday, the snowdrift problem will come to the forefront.

Translated by Jeffrey McCabe, www.creativtrans.com

Avalanche problems



Danger ratings



Expositions

