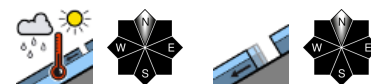


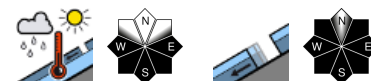
Due to lacking solar radiation, no daytime danger cycle. For the snowpack to regain firmness, the temperatures are too high.



Dachsteingebiet, Totes Gebirge, Ennstaler Alpen, Hochschwabgebiet, Mürztaler Alpen, Mürzsteger Alpen, Seckauer Tauern, Eisenerzer Alpen, Rottenmanner Tauern, Nördliche Wölzer Tauern, Schladminger Tauern Süd, Schladminger Tauern Nord, Südliche Wölzer Tauern



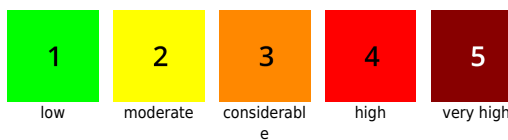
Gurktaler Alpen, Seetaler Alpen, Stub- und Gleinalpe, Koralpe, Westliche Fischbacher Alpen und Grazer Bergland, Östliche Fischbacher Alpen und Wechselgebiet



Avalanche problems



Danger ratings

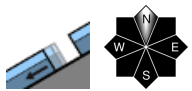
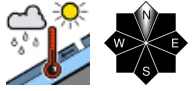
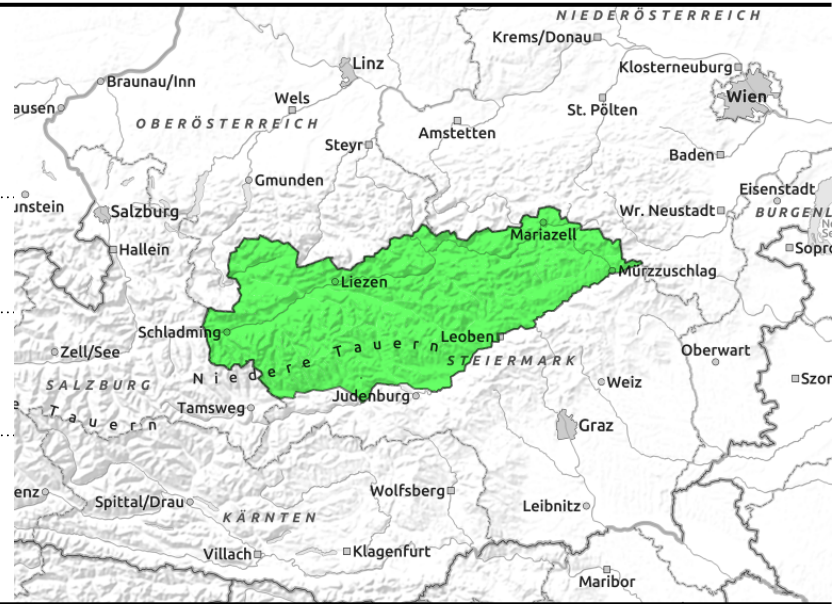


Expositions



30.03.2022

Dachsteingebiet, Totes Gebirge, Ennstaler Alpen, Hochschwabgebiet, Mürztaler Alpen, Mürzsteger Alpen, Seckauer Tauern, Eisenerzer Alpen, Rottenmanner Tauern, Nördliche Wölzer Tauern, Schladminger Tauern Süd, Schladminger Tauern Nord, Südliche Wölzer Tauern



Low avalanche danger, but some steep slopes in all aspects loose-snow and slab avalanches possible

Apart from increasingly poor visibility, generally favorable backcountry touring conditions prevail, despite certain specific avalanche problems.

Glide-snow avalanches are possible at any time of day or night. Avoid glide-cracks.

In steep north-facing gullies there are still a few avalanche prone locations from a permanent weak layer at which slab avalanches can be triggered by mountaineers.

Due to lack of solar radiation and relatively high temperatures, naturally triggered wet loose-snow and slab avalanches cannot be ruled out in steep terrain.

Snowpack structure

The snowpack is becoming wetter and wetter, at intermediate altitudes the snow is already rotten. On steep north-facing slopes there are still reserves of cold and there, faceted crystals have formed potential weak layers.

Weather

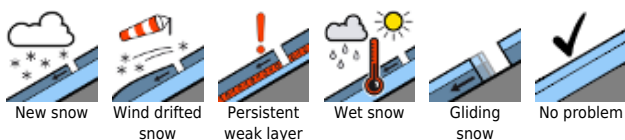
High-pressure front weather conditions which have persisted through nearly all of March have ended. Over the western Mediterranean a low pressure front has formed with a SW air current, bringing moderately moist air masses our way. On Tuesday night, high-altitude clouds will move in, on Wednesday the clouds will drop lower, the peaks will become shrouded in fog. In the afternoon, light rainfall will set in from the south. Some bright intervals are possible in the morning, most likely from Hochschwab eastwards. Winds will be moderate from the southwest, shifting in the evening to northwest. At 2000 m: +2 degrees; at 1500 m: +6 degrees.

On Thursday, heavy cloud will dominate throughout the land, the peaks will be veiled in fog, snowfall above 1200-1400 m. On Friday, further precipitation, with a descending snowfall level. Temperatures will drop, winds will still be moderate.

Outlook

Starting on Thursday, fresh snowdrifts will be generated at high altitudes, avalanche danger will rise slightly. Until the weekend, a late-winter phase will prevail.

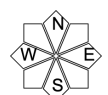
Avalanche problems



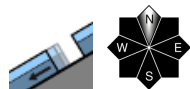
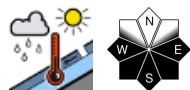
Danger ratings



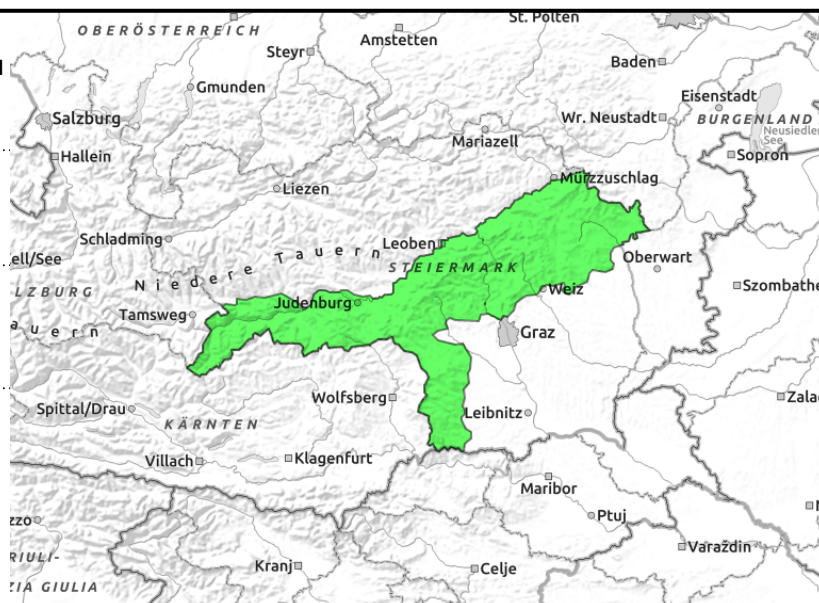
Expositions



Gurktaler Alpen, Seetaler Alpen, Stub- und Gleinalpe, Korralpe, Westliche Fischbacher Alpen und Grazer Bergland, Östliche Fischbacher Alpen und Wechselgebiet



zahlreich und verbreitet



Low avalanche danger, favorable conditions, daytime wet-snow activity on steep slopes

Apart from increasingly poor visibility, generally favorable backcountry touring conditions prevail, with low avalanche danger, despite ongoing wet-snow and glide-snow avalanches in extremely steep terrain. Avoid glide cracks and fishbones!

Snowpack structure

The snowpack is still melt-freeze encrusted in early morning, but quickly becomes moist and rotten. Only on steep shady slopes at high altitudes is the snow still cold and hard. The slopes are becoming bare of snow. Backcountry touring possibilities are already much reduced.

Weather

High-pressure front weather conditions which have persisted through nearly all of March have ended. Over the western Mediterranean a low pressure front has formed with a SW air current, bringing moderately moist air masses our way. On Tuesday night, high-altitude clouds will move in, on Wednesday the clouds will drop lower, the peaks will become shrouded in fog. In the afternoon, light rainfall will set in from the south. Some bright intervals are possible in the morning, most likely from Hochschwab eastwards. Winds will be moderate from the southwest, shifting in the evening to northwest. At 2000 m: +2 degrees; at 1500 m: +6 degrees.

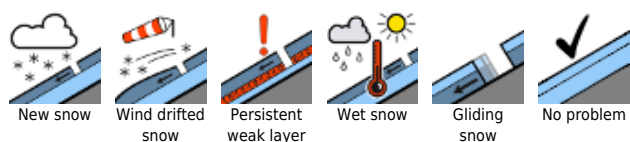
On Thursday, heavy cloud will dominate throughout the land, the peaks will be veiled in fog, snowfall above 1200-1400 m. On Friday, further precipitation, with a descending snowfall level. Temperatures will drop, winds will still be moderate.

Outlook

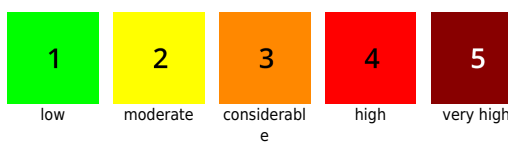
Starting on Thursday, fresh snowdrifts will be generated at high altitudes, avalanche danger will rise slightly.

Translated by Jeffrey McCabe, www.creativtrans.com

Avalanche problems



Danger ratings



Expositions

