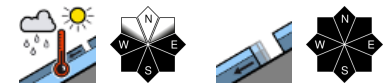


Favourable springtime conditions - Terminate backcountry tours early



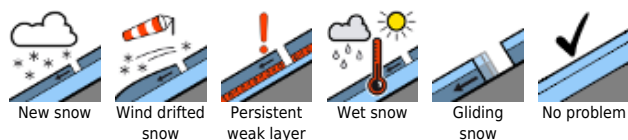
Totes Gebirge, Dachsteingebiet, Schladminger Tauern Nord, Südliche Wölzer Tauern, Nördliche Wölzer Tauern, Ennstaler Alpen, Rottenmanner Tauern, Seckauer Tauern, Eisenerzer Alpen, Hochschwabgebiet, Mürztsteger Alpen, Mürztaler Alpen, Schladminger Tauern Süd



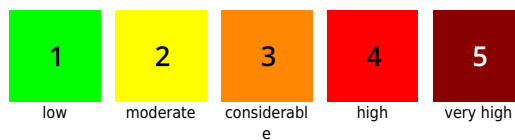
Gurktaler Alpen, Seetaler Alpen, Stub- und Gleinalpe, Westliche Fischbacher Alpen und Grazer Bergland, Östliche Fischbacher Alpen und Wechselgebiet, Korralpe



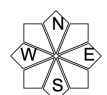
Avalanche problems



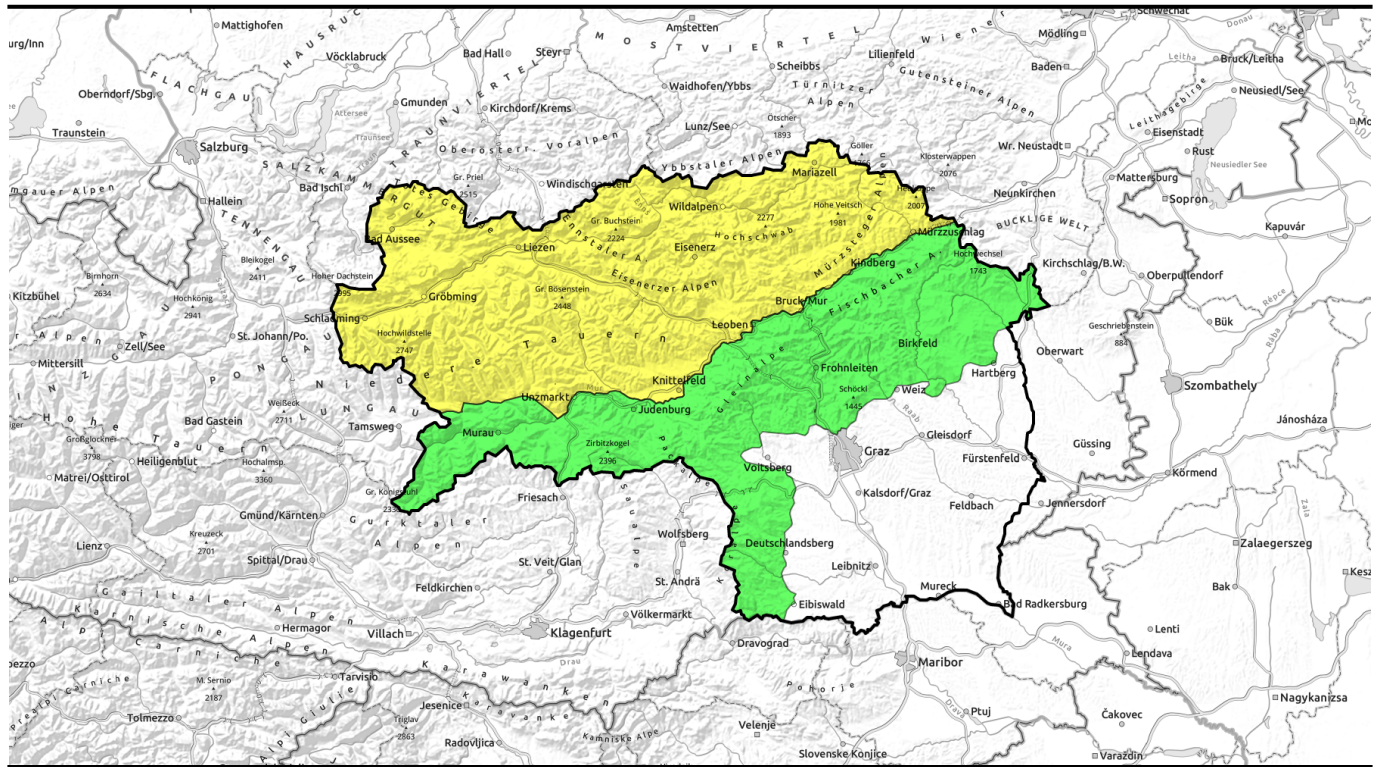
Danger ratings



Expositions



27.03.2022, afternoon



Günstige Frühjahrsbedingungen - Touren frühzeitig beenden!



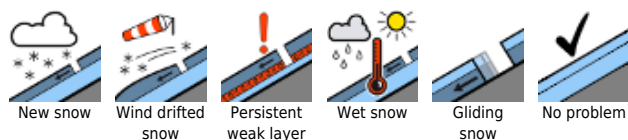
Totes Gebirge, Dachsteingebiet, Schladminger Tauern Nord, Südliche Wölzer Tauern, Nördliche Wölzer Tauern, Ennstaler Alpen, Rottenmanner Tauern, Seckauer Tauern, Eisenerzer Alpen, Hochschwabgebiet, Mürzsteger Alpen, Mürztaler Alpen, Schladminger Tauern Süd



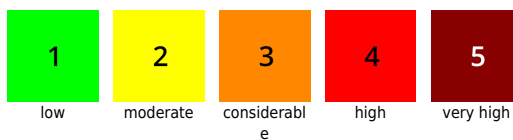
Gurktaler Alpen, Seetaler Alpen, Stub- und Gleinalpe, Westliche Fischbacher Alpen und Grazer Bergland, Östliche Fischbacher Alpen und Wechselgebiet, Koralpe



Avalanche problems



Danger ratings

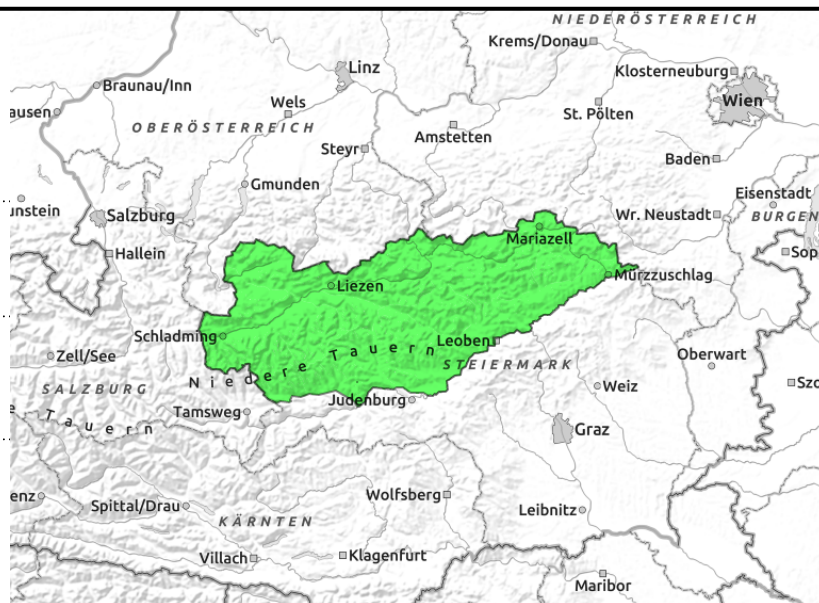


Expositions



27.03.2022, morning

Totes Gebirge, Dachsteingebiet, Schladminger Tauern Nord, Südliche Wölzer Tauern, Nördliche Wölzer Tauern, Ennstaler Alpen, Rottenmanner Tauern, Seckauer Tauern, Eisenerzer Alpen, Hochschwabgebiet, Mürzsteger Alpen, Mürztaler Alpen, Schladminger Tauern Süd



daytime cycle of naturally triggered avalanches



in extremely steep terrain

Springtime conditions with swift increase in avalanche danger

Due to solar radiation and daytime warming, avalanche danger rises in the morning from LOW to MODERATE. Particularly on sunny slopes the likelihood of naturally triggered wet-snow and glide-snow avalanches increases in steep terrain, and these can grow to large size. Also: in steep north-facing gullies there is a persistent weak layer where in few places slab avalanches can be triggered.

Snowpack structure

As a result of nocturnal outgoing long wave radiation, the snowpack is still encrusted in early morning but swiftly softens during the morning hours on sunny slopes up to high altitudes. The snowpack is thoroughly wet and becoming wetter, at intermediate altitudes it is already rotten. On steep north-facing slopes at high altitudes there are still reserves of cold and there, faceted crystals have formed weak layers.

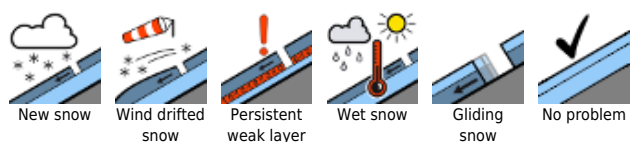
Weather

On Sunday, outstanding mountain weather, lots of sunshine, excellent visibility, little wind. Only in the NE massifs will there be some harmless convective cloud build-up in the afternoon. Temperatures will be very mild. At 2000 m: +3 degrees.

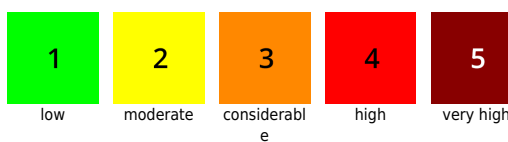
Outlook

No significant change is expected on Monday in the weather or avalanche situation.

Avalanche problems



Danger ratings

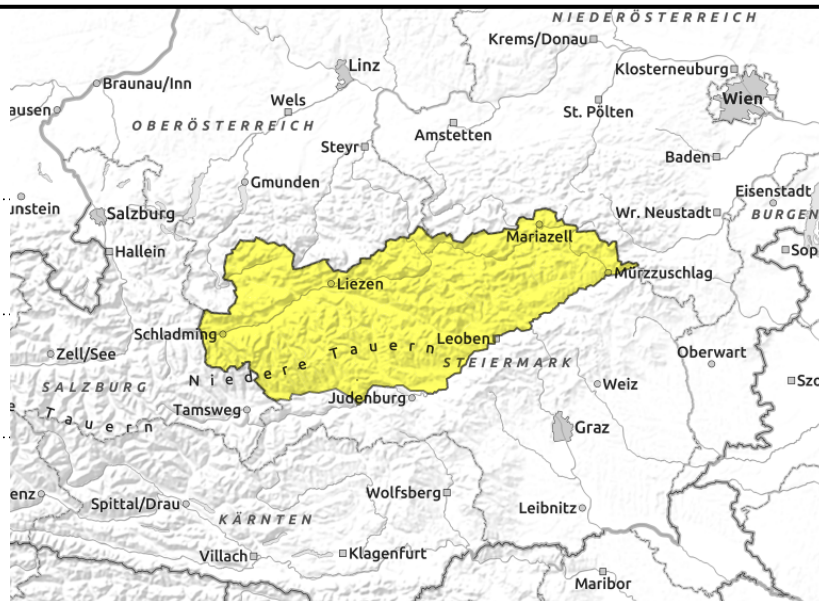


Expositions



27.03.2022, afternoon

Totes Gebirge, Dachsteingebiet, Schladminger Tauern Nord, Südliche Wölzer Tauern, Nördliche Wölzer Tauern, Ennstaler Alpen, Rottenmanner Tauern, Seckauer Tauern, Eisenerzer Alpen, Hochschwabgebiet, Mürzsteger Alpen, Mürztaler Alpen, Schladminger Tauern Süd



daytime cycle of naturally triggered avalanches



in extremely steep terrain

Springtime conditions with swift increase in avalanche danger

Due to solar radiation and daytime warming, avalanche danger rises in the morning from LOW to MODERATE. Particularly on sunny slopes the likelihood of naturally triggered wet-snow and glide-snow avalanches increases in steep terrain, and these can grow to large size. Also: in steep north-facing gullies there is a persistent weak layer where in few places slab avalanches can be triggered.

Snowpack structure

As a result of nocturnal outgoing long wave radiation, the snowpack is still encrusted in early morning but swiftly softens during the morning hours on sunny slopes up to high altitudes. The snowpack is thoroughly wet and becoming wetter, at intermediate altitudes it is already rotten. On steep north-facing slopes at high altitudes there are still reserves of cold and there, faceted crystals have formed weak layers.

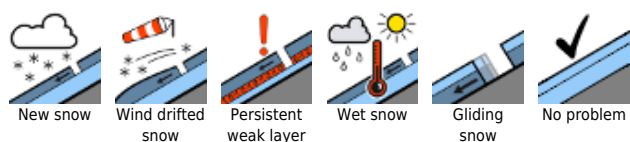
Weather

On Sunday, outstanding mountain weather, lots of sunshine, excellent visibility, little wind. Only in the NE massifs will there be some harmless convective cloud build-up in the afternoon. Temperatures will be very mild. At 2000 m: +3 degrees.

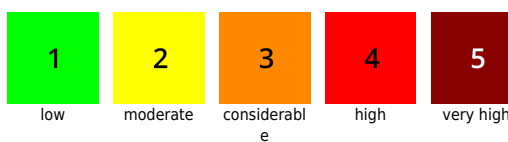
Outlook

No significant change is expected on Monday in the weather or avalanche situation.

Avalanche problems



Danger ratings



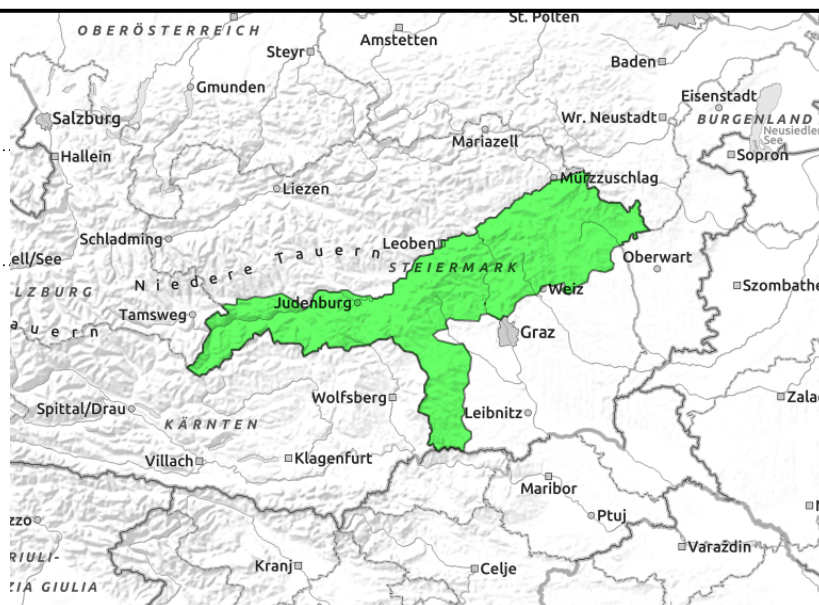
Expositions



Gurktaler Alpen, Seetaler Alpen, Stub- und Gleinalpe, Westliche Fischbacher Alpen und Grazer Bergland, Östliche Fischbacher Alpen und Wechselgebiet, Koralpe



naturally triggered avalanches



Springtime weather and favorable backcountry touring conditions

Low avalanche danger with favourable conditions, but naturally triggered wet-snow and glide-snow avalanches will increase in frequency during the day on extremely steep slopes. Heed glide cracks.

Snowpack structure

The snowpack is still melt-freeze encrusted in early morning, but swiftly softens and becomes rotten during the morning. At low altitudes and on south-facing slopes the slopes are already bare. Backcountry touring possibilities are already much reduced.

Weather

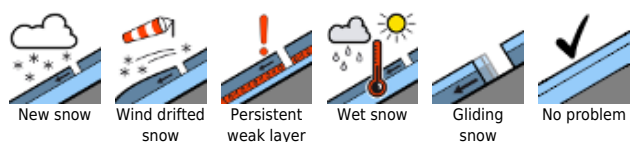
On Sunday, outstanding mountain weather, lots of sunshine, excellent visibility, little wind. Only in the NE massifs will there be some harmless convective cloud build-up in the afternoon. Temperatures will be very mild. At 2000 m: +3 degrees.

Outlook

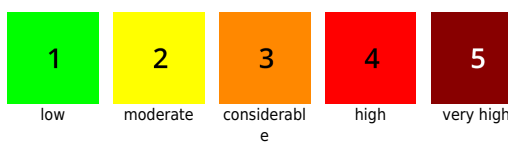
No significant change is expected on Monday in the weather or avalanche situation.

Translated by Jeffrey McCabe, www.creativtrans.com

Avalanche problems



Danger ratings



Expositions

