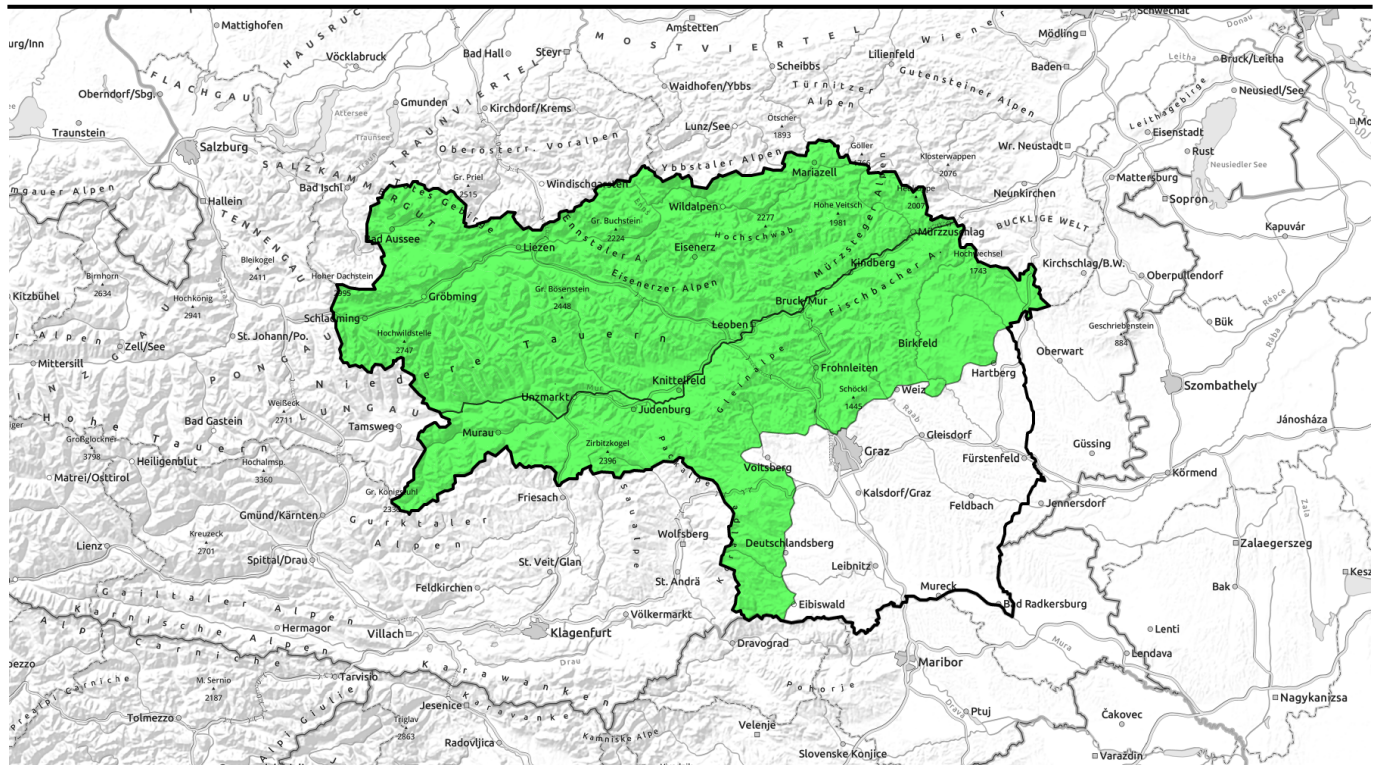


# 24.03.2022, morning



## Daytime cycle of avalanche danger dictated by solar radiation



Totes Gebirge, Dachsteingebiet, Schladminger Tauern Nord, Rottenmanner Tauern, Nördliche Wölzer Tauern, Ennstaler Alpen, Hochschwabgebiet, Mürzsteger Alpen, Mürztaler Alpen, Eisenerzer Alpen, Seckauer Tauern, Schladminger Tauern Süd, Südliche Wölzer Tauern



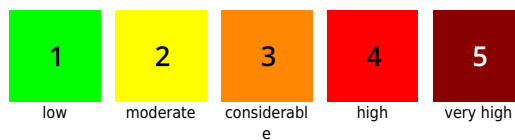
Gurktaler Alpen, Seetaler Alpen, Stub- und Gleinalpe, Westliche Fischbacher Alpen und Grazer Bergland, Östliche Fischbacher Alpen und Wechselgebiet, Koralpe



### Avalanche problems



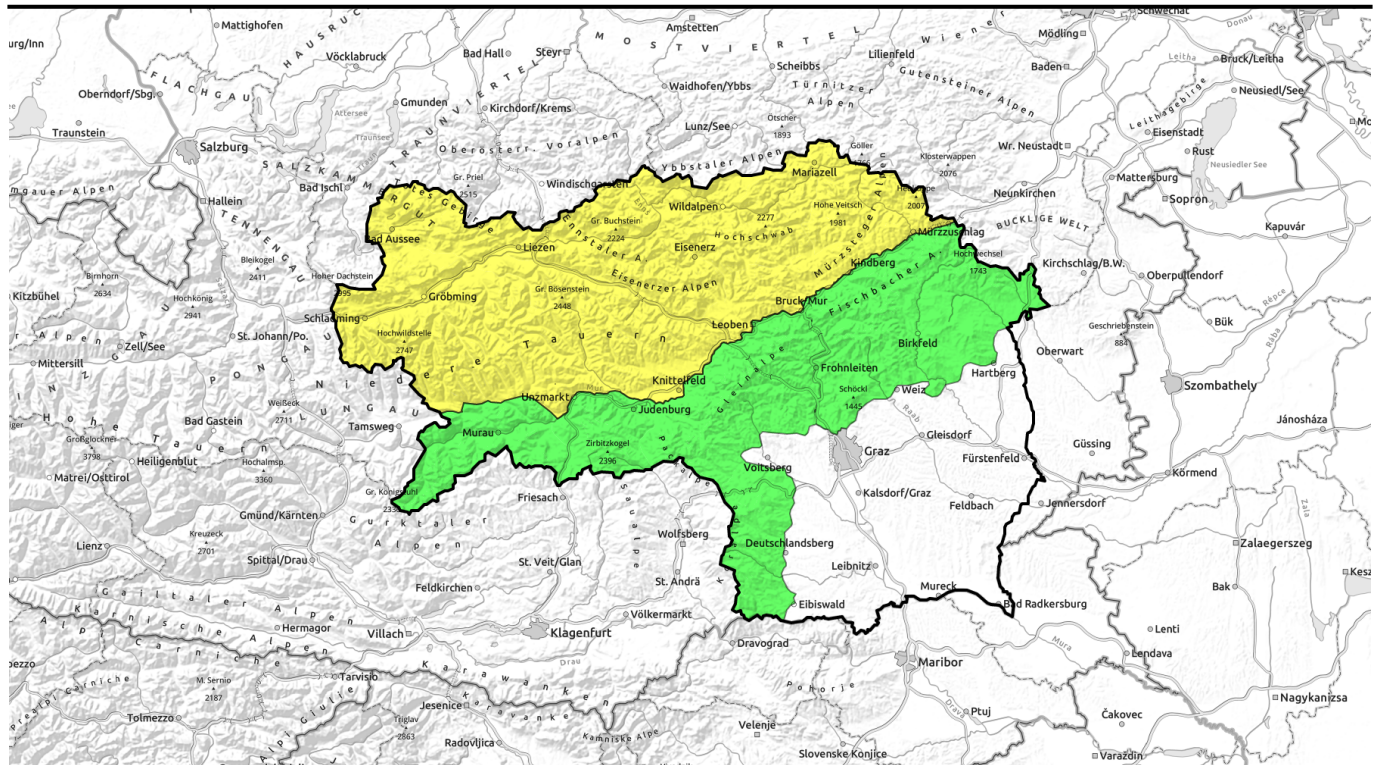
### Danger ratings







### Expositions



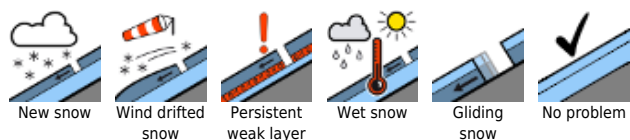
# 24.03.2022, afternoon



## Einstrahlungsbedingter Tagesgang der Lawinengefahr!

	<p>Totes Gebirge, Dachsteingebiet, Schladminger Tauern Nord, Rottenmann Tauern, Nördliche Wölzer Tauern, Ennstaler Alpen, Hochschwabgebiet, Mürtzsteiger Alpen, Mürtztaler Alpen, Eisenerzer Alpen, Seckauer Tauern, Schladminger Tauern Süd, Südliche Wölzer Tauern</p>	
	<p>Gurktaler Alpen, Seetaler Alpen, Stub- und Gleinalpe, Westliche Fischbacher Alpen und Grazer Bergland, Östliche Fischbacher Alpen und Wechselgebiet, Koralpe</p>	

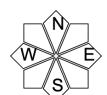
### Avalanche problems



### Danger ratings



### Expositions



# 24.03.2022, morning

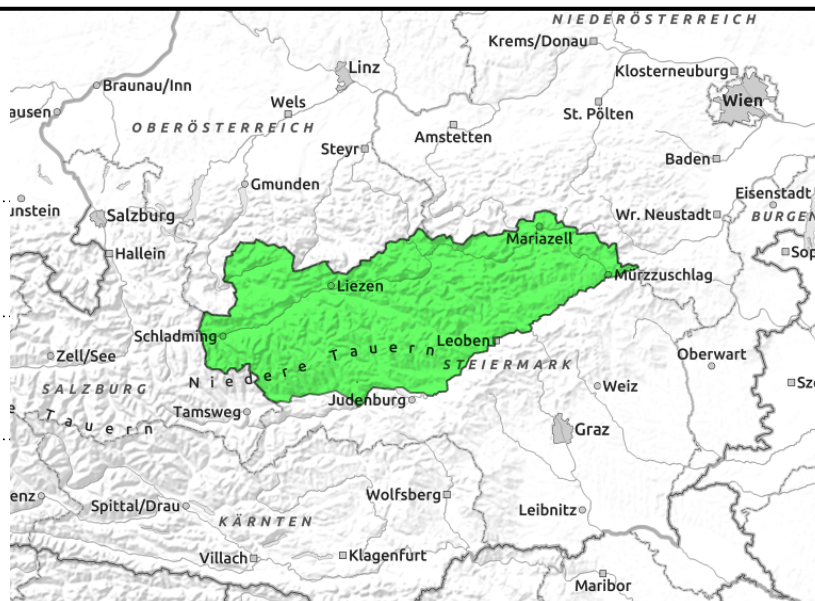
Totes Gebirge, Dachsteingebiet, Schladminger Tauern Nord, Rottenmanner Tauern, Nördliche Wölzer Tauern, Ennstaler Alpen, Hochschwabgebiet, Mürzsteiger Alpen, Mürztaler Alpen, Eisenerzer Alpen, Seckauer Tauern, Schladminger Tauern Süd, Südliche Wölzer Tauern



on steep grass-covered slopes



daytime cycle of naturally triggered avalanches



## Favorable backcountry tour conditions, with daytime danger cycle

Avalanche danger is subject to a daytime cycle, rising from LOW to MODERATE, when the snowpack forfeits its firmness and naturally triggered or skier-triggered (by large additional loading) wet loose-snow avalanches become more frequent on sunny, steep slopes.

Glide-snow avalanches are possible at any time of day or night on steep grass-covered slopes and become likelier during the course of the day. Glide cracks and 'fishbones' in the snowpack surface are red flags.

### Snowpack structure

During the night, skies are clear and outgoing longwave radiation is adequate, but temperatures remain above zero. Thus, the snowpack surface regains firmness more poorly on sunny slopes and is all that much more quickly softened during the later morning. On shady slopes the snowpack is hard and icy only at high altitudes. The wetness of the snowpack proceeds and, with it, the destabilization, particularly on sunny steep slopes.

### Weather

Cloudless skies initially throughout Styria, and very mild. Winds will be moderate from the northwest. At 2000 m: +4 degrees during the night and all day long.

### Outlook

On Friday, some clouds above summit level, minor precipitation is possible, slightly lower temperatures. Slightly less pronounced daytime danger cycle.

#### Avalanche problems



#### Danger ratings



#### Expositions



# 24.03.2022, afternoon

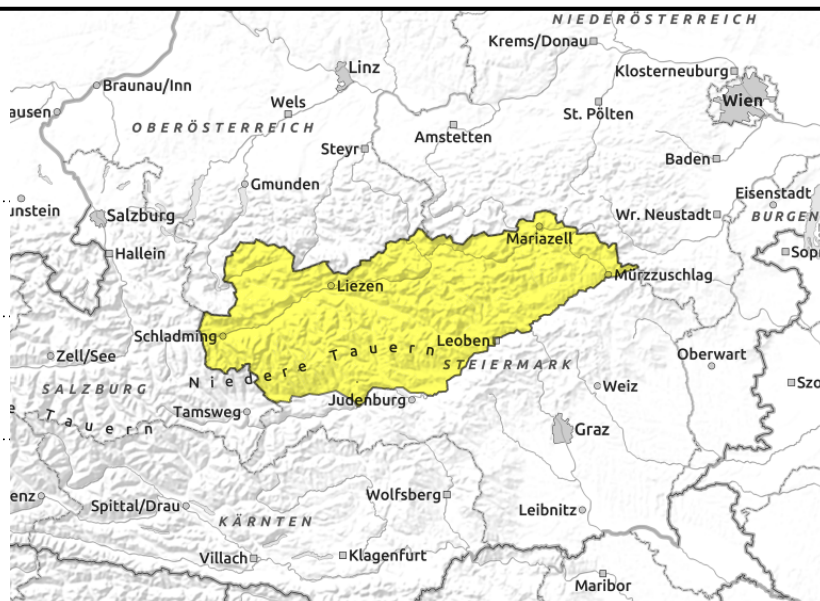
Totes Gebirge, Dachsteingebiet, Schladminger Tauern Nord, Rottenmanner Tauern, Nördliche Wölzer Tauern, Ennstaler Alpen, Hochschwabgebiet, Mürzsteiger Alpen, Mürztaler Alpen, Eisenerzer Alpen, Seckauer Tauern, Schladminger Tauern Süd, Südliche Wölzer Tauern



on steep grass-covered slopes



daytime cycle of naturally triggered avalanches



## Favorable backcountry tour conditions, with daytime danger cycle

Avalanche danger is subject to a daytime cycle, rising from LOW to MODERATE, when the snowpack forfeits its firmness and naturally triggered or skier-triggered (by large additional loading) wet loose-snow avalanches become more frequent on sunny, steep slopes.

Glide-snow avalanches are possible at any time of day or night on steep grass-covered slopes and become likelier during the course of the day. Glide cracks and 'fishbones' in the snowpack surface are red flags.

### Snowpack structure

During the night, skies are clear and outgoing longwave radiation is adequate, but temperatures remain above zero. Thus, the snowpack surface regains firmness more poorly on sunny slopes and is all that much more quickly softened during the later morning. On shady slopes the snowpack is hard and icy only at high altitudes. The wetness of the snowpack proceeds and, with it, the destabilization, particularly on sunny steep slopes.

### Weather

Cloudless skies initially throughout Styria, and very mild. Winds will be moderate from the northwest. At 2000 m: +4 degrees during the night and all day long.

### Outlook

On Friday, some clouds above summit level, minor precipitation is possible, slightly lower temperatures. Slightly less pronounced daytime danger cycle.

#### Avalanche problems



#### Danger ratings



#### Expositions

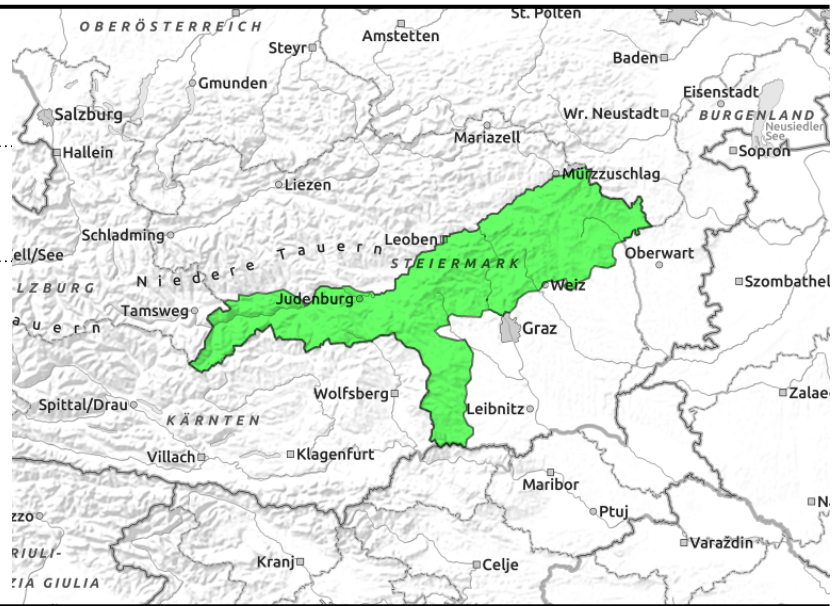


**24.03.2022**

**Gurktaler Alpen, Seetaler Alpen, Stub- und Gleinalpe, Westliche Fischbacher Alpen und Grazer Bergland, Östliche Fischbacher Alpen und Wechselgebiet, Koralpe**



in extremely steep grassy terrain



## Favorable backcountry touring conditions, low avalanche danger

Avalanche danger is low. During the day, the snowpack forfeits its firmness. Glide-snow avalanches are possible at any time of day or night on extremely steep grass-covered slopes. Glide cracks and fishbones should be seen as red flags.

### Snowpack structure

During the night, skies are clear and outgoing longwave radiation is adequate, but temperatures remain above zero. Thus, the snowpack surface regains firmness more poorly on sunny slopes and is all that much more quickly softened during the later morning. Low altitude and south-facing slopes are already snow-bare up to high altitudes.

### Weather

Cloudless skies initially throughout Styria, and very mild. Winds will be moderate from the northwest. At 2000 m: +4 degrees during the night and all day long.

### Outlook

On Friday, some clouds above summit level, minor precipitation is possible, slightly lower temperatures. Slightly less pronounced daytime danger cycle.

Translated by Jeffrey McCabe, [www.creativtrans.com](http://www.creativtrans.com)

#### Avalanche problems



New snow



Wind drifted snow



Persistent weak layer



Wet snow



Gliding snow



No problem

#### Danger ratings



1

low



2

moderate



3

considerable



4

high



5

very high

#### Expositions

