

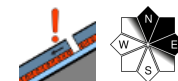
No significant change in avalanche danger. Temperatures dropping at high altitudes.



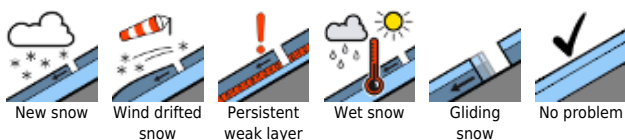
Mürztaler Alpen, Seckauer Tauern, Südliche Wölzer Tauern, Schladminger Tauern Süd, Schladminger Tauern Nord, Dachsteingebiet, Totes Gebirge, Nördliche Wölzer Tauern, Rottenmanner Tauern, Ennstaler Alpen, Eisenerzer Alpen, Hochschwabgebiet, Mürzsteger Alpen



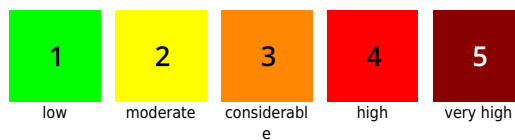
Östliche Fischbacher Alpen und Wechselgebiet, Westliche Fischbacher Alpen und Grazer Bergland, Stub- und Gleinalpe, Koralpe, Seetaler Alpen, Gurktaler Alpen



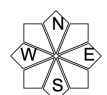
Avalanche problems



Danger ratings

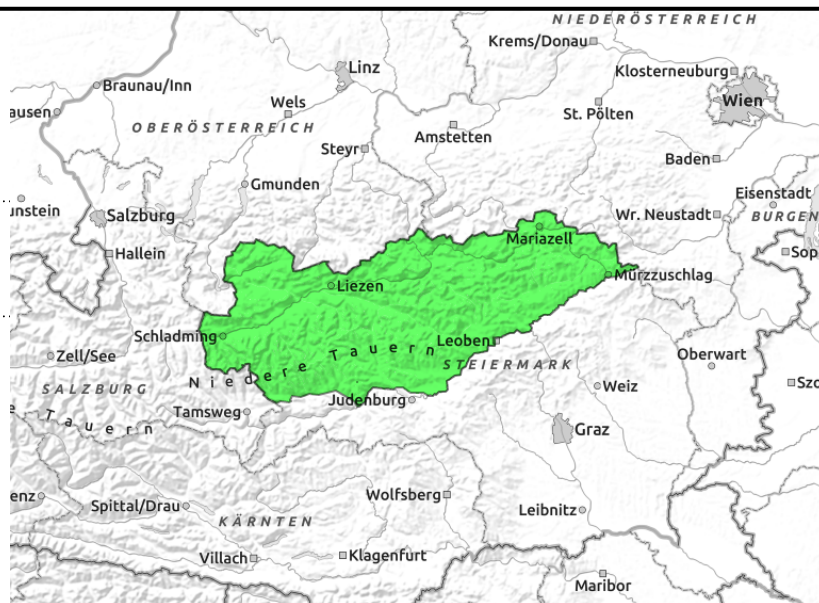
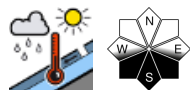


Expositions



19.03.2022

Mürztaler Alpen, Seckauer Tauern, Südliche Wölzer Tauern, Schladminger Tauern Süd, Schladminger Tauern Nord, Dachsteingebiet, Totes Gebirge, Nördliche Wölzer Tauern, Rottenmanner Tauern, Ennstaler Alpen, Eisenerzer Alpen, Hochschwabgebiet, Mürzsteger Alpen



Low avalanche danger, isolated weak layers in old snow

Avalanche danger in Styria is low. In backcountry terrain, old snowdrift accumulations on east-facing slopes require caution, naturally triggered releases cannot be ruled out. Caution also behind protruberances where drifts have been deposited. At intermediate altitudes on sunny slopes, wet slides and glide-snow avalanches are possible during the afternoon.

Snowpack structure

Due to dropping temperatures the snowpack surface is regaining firmness at high altitude. At intermediate altitude the snow is wet and often rotten.

Weather

From the east some clouds will move in during early morning, a bit of rainfall is possible. In the morning more sunshine is anticipated, especially in the western regions. Most sunshine in Ausseer Land. At 2000 m: -6 degree, SE winds at 50 km/hr. On Sunday it will be sunny. It will remain cool.

Outlook

No significant change in avalanche danger is expected.

Avalanche problems



Danger ratings

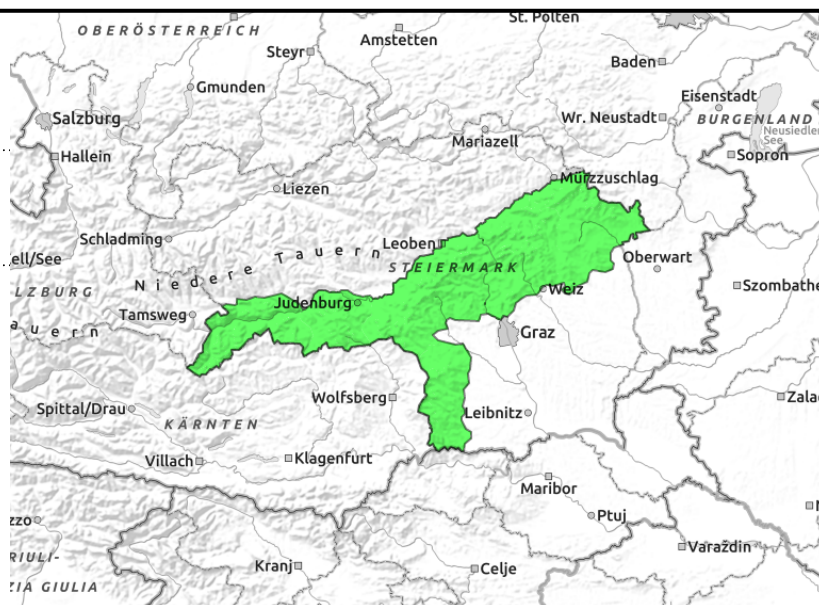
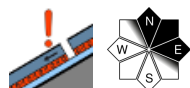


Expositions



19.03.2022

Östliche Fischbacher Alpen und Wechselgebiet,
Westliche Fischbacher Alpen und Grazer Bergland,
Stub- und Gleinalpe, Koralpe, Seetaler Alpen,
Gurktaler Alpen



Favorable backcountry conditions persist

Isolated danger zones on north-facing slopes, where the persistent weak layer (more deeply embedded weak layer) prevails. On shady, extremely steep slopes, triggering a slab cannot be ruled out. Glide-snow avalanche activity is increasing.

Snowpack structure

The snowpack is stable. Due to minor rainfall the snowpack surface is moist down to intermediate altitudes. The base is still stable. On extremely steep shady slopes above 2000 m, weak layers of faceted crystals are making the snowpack layering vulnerable.

Weather

From the east some clouds will move in during early morning, a bit of rainfall is possible. Snowfall level will lie at 1000 m. The amounts of fresh snow are not relevant to avalanches. In the morning more sunshine is anticipated, especially in the western regions. At 2000 m: -6 degree, SE winds at 50 km/hr.

Outlook

No significant change in avalanche danger is anticipated.

Translated by Jeffrey McCabe, www.creativtrans.com

Avalanche problems



Danger ratings



Expositions

