

## Caution in backcountry east-facing slopes. Snowdrifts.



Mürtztaler Alpen, Seckauer Tauern, Südliche Wölzer Tauern, Schladminger Tauern Süd, Schladminger Tauern Nord, Dachsteingebiet, Totes Gebirge, Nördliche Wölzer Tauern, Rottenmanner Tauern, Ennstaler Alpen, Eisenerzer Alpen, Hochschwabgebiet, Mürtzsteger Alpen



Östliche Fischbacher Alpen und Wechselgebiet, Westliche Fischbacher Alpen und Grazer Bergland, Stub- und Gleinalpe, Koralpe, Seetaler Alpen, Gurktaler Alpen



### Avalanche problems



New snow



Wind drifted snow



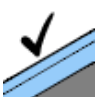
Persistent weak layer



Wet snow



Gliding snow



No problem

### Danger ratings



1

low



2

moderate



3

considerabl

e



4

high



5

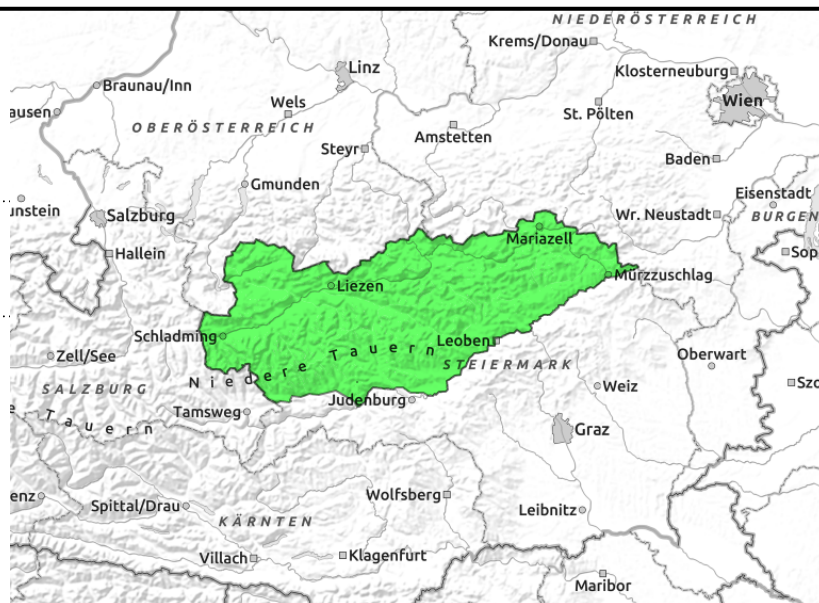
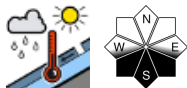
very high

### Expositions



**18.03.2022**

**Mürztaler Alpen, Seckauer Tauern, Südliche Wölzer Tauern, Schladminger Tauern Süd, Schladminger Tauern Nord, Dachsteingebiet, Totes Gebirge, Nördliche Wölzer Tauern, Rottenmanner Tauern, Ennstaler Alpen, Eisenerzer Alpen, Hochschwabgebiet, Mürzsteger Alpen**



## Heed snowdrifts on east-facing slopes

Avalanche danger in Styria is low. In outlying terrain the freshly generated snowdrifts above 2200 m on east-facing slopes require caution, naturally triggered releases cannot be ruled out. Caution also behind protruberances where drifts have been deposited. At intermediate altitudes on sunny slopes, wet slides and glide-snow avalanches are possible during the afternoon.

### Snowpack structure

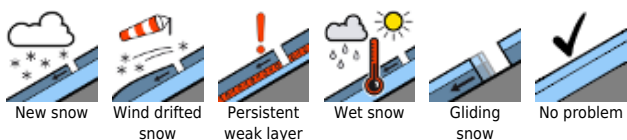
Due to dropping temperatures the snowpack surface is regaining firmness at high altitude. At intermediate altitude the snow is wet and often rotten.

### Weather

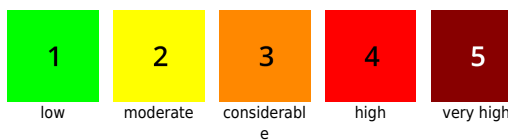
As a result of NW winds, heavy cloud cover will move in during early morning, but the peaks will remain free and it is expected to remain dry. Starting at midday, more sunshine is anticipated, in the southern rimline ranges the clouds could persist for longer. Temperatures will drop slightly. At 2000 m: -5 to 0 degrees from east to west.

### Outlook

#### Avalanche problems



#### Danger ratings



#### Expositions

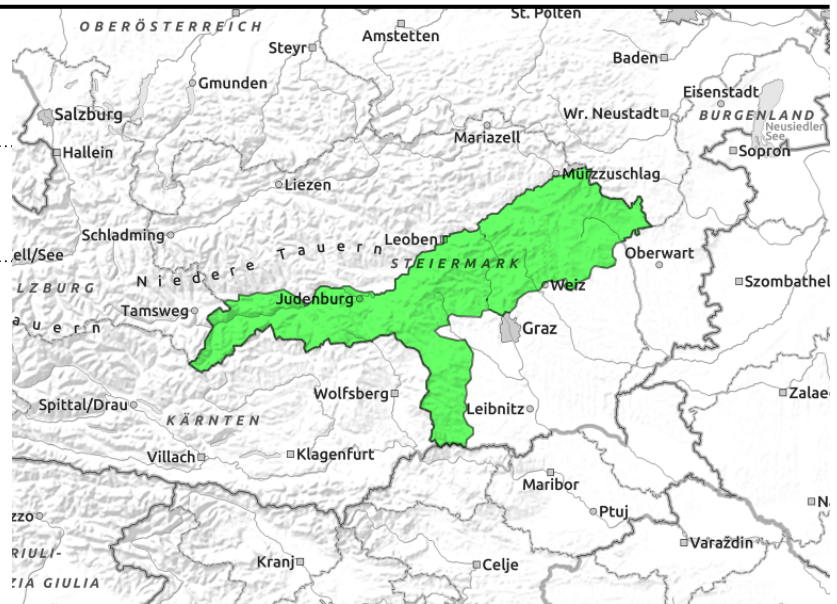


**18.03.2022**

Östliche Fischbacher Alpen und Wechselgebiet,  
Westliche Fischbacher Alpen und Grazer Bergland,  
Stub- und Gleinalpe, Koralpe, Seetaler Alpen,  
Gurktaler Alpen



Heed snowdrifts on east-facing slopes



## Favorable backcountry conditions persist

Isolated danger zones on north-facing slopes, where the persistent weak layer (more deeply embedded weak layer) prevails. On shady, extremely steep slopes, triggering a slab cannot be ruled out. Glide-snow avalanche activity is increasing.

### Snowpack structure

The snowpack is stable. Due to minor rainfall the snowpack surface is moist down to intermediate altitudes. The base is still stable. On extremely steep shady slopes above 2000 m, weak layers of faceted crystals are making the snowpack layering vulnerable.

### Weather

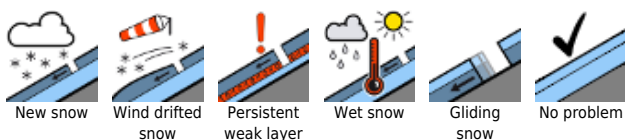
As a result of NW winds, heavy cloud cover will move in during early morning, but the peaks will remain free and it is expected to remain dry. Starting at midday, more sunshine is anticipated, in the southern rimline ranges the clouds could persist for longer. Temperatures will drop slightly. At 2000 m: -5 to 0 degrees from east to west.

### Outlook

No significant change in avalanche danger is anticipated.

Translated by Jeffrey McCabe, [www.creativtrans.com](http://www.creativtrans.com)

#### Avalanche problems



#### Danger ratings



#### Expositions

