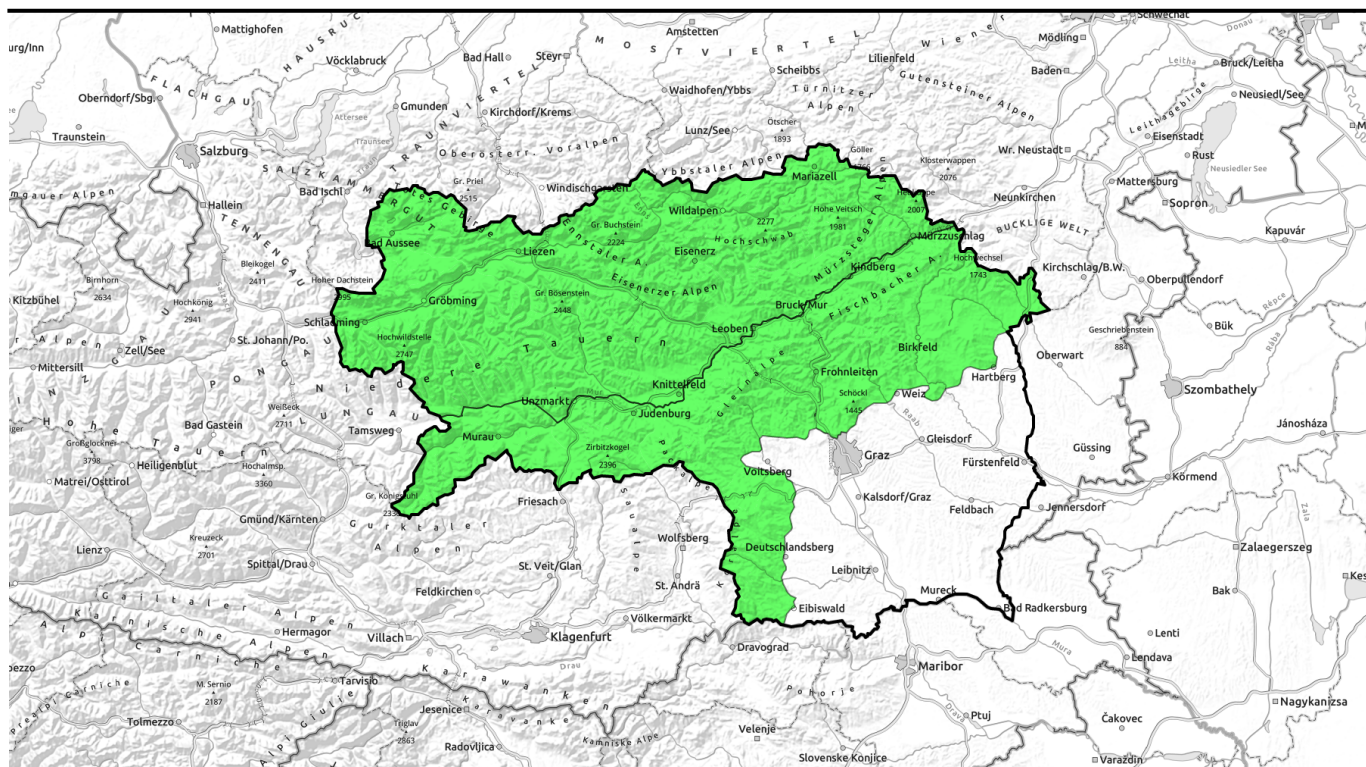

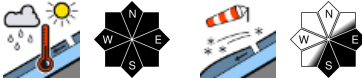




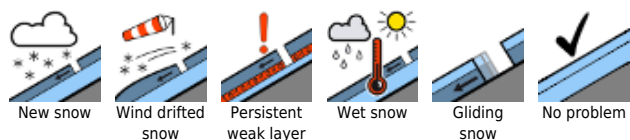
17.03.2022, morning



Daytime cycle of avalanche danger

	<p>Mürztaler Alpen, Seckauer Tauern, Südliche Wölzer Tauern, Schladminger Tauern Süd, Schladminger Tauern Nord, Dachsteingebiet, Totes Gebirge, Nördliche Wölzer Tauern, Rottenmanner Tauern, Ennstaler Alpen, Eisenerzer Alpen, Hochschwabgebiet, Mürzsteger Alpen</p>	
	<p>Östliche Fischbacher Alpen und Wechselgebiet, Westliche Fischbacher Alpen und Grazer Bergland, Stub- und Gleinalpe, Koralpe, Seetaler Alpen, Gurktaler Alpen</p>	

Avalanche problems



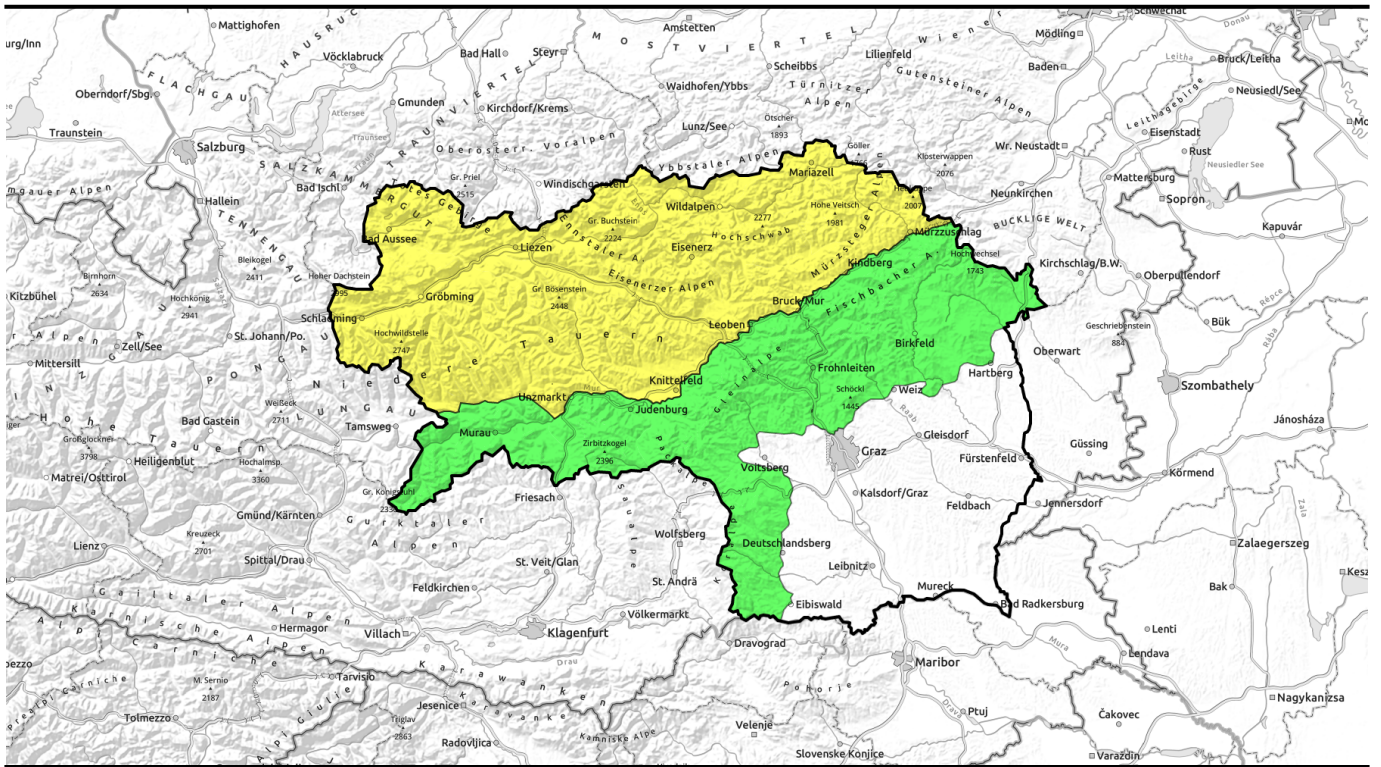
Danger ratings



Expositions



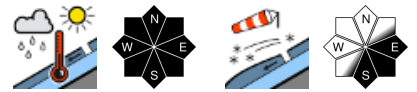
17.03.2022, afternoon



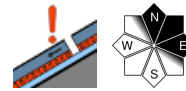
Tagesgang der Lawinengefahr!



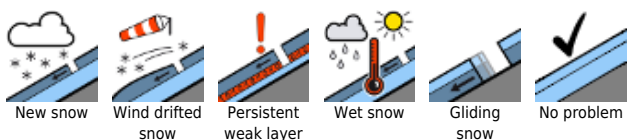
Mürztaler Alpen, Seckauer Tauern, Südliche Wölzer Tauern, Schladminger Tauern Süd, Schladminger Tauern Nord, Dachsteingebiet, Totes Gebirge, Nördliche Wölzer Tauern, Rottenmanner Tauern, Ennstaler Alpen, Eisenerzer Alpen, Hochschwabgebiet, Mürztegger Alpen



Östliche Fischbacher Alpen und Wechselgebiet, Westliche Fischbacher Alpen und Grazer Bergland, Stub- und Gleinalpe, Koralpe, Seetaler Alpen, Gurktaler Alpen



Avalanche problems



Danger ratings

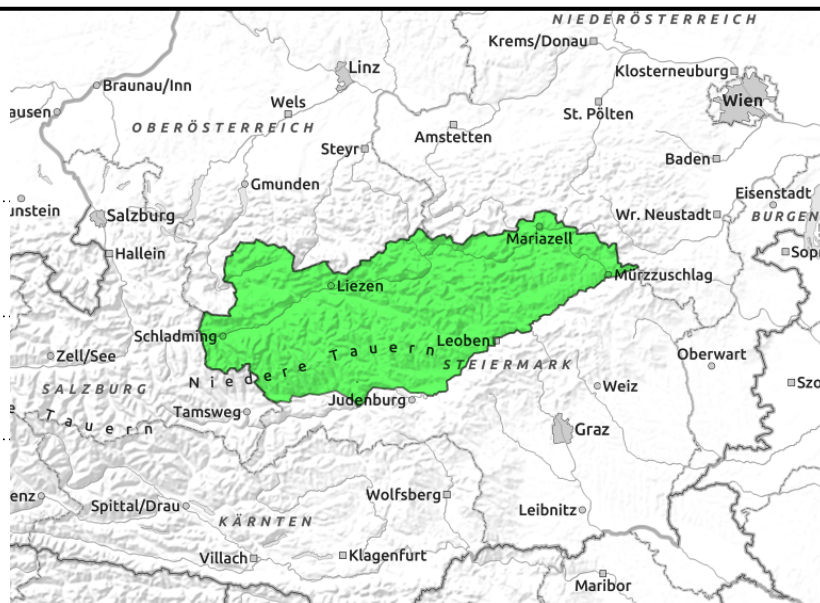
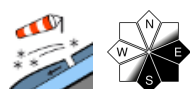
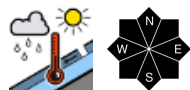


Expositions



17.03.2022, morning

Mürztaler Alpen, Seckauer Tauern, Südliche Wölzer Tauern, Schladminger Tauern Süd, Schladminger Tauern Nord, Dachsteingebiet, Totes Gebirge, Nördliche Wölzer Tauern, Rottenmanner Tauern, Ennstaler Alpen, Eisenerzer Alpen, Hochschwabgebiet, Mürzsteger Alpen



At high altitudes: snowdrifts! At low and intermediate altitudes: wet-snow problem.

In the Northern Alps and Niedere Tauern, a daytime cycle of avalanche danger prevails. Due to daytime warming, naturally triggered wet-snow avalanches can release.

In backcountry touring regions the freshly generated snowdrifts on east-facing slopes require attentiveness, even minimum additional loading can trigger a slab at high altitudes. Caution urged behind protruberances, where there are snowdrifts.

Snowpack structure

In the Northern Alps and Niedere Tauern there was rainfall up to 1800 m. The snowpack was moistened and became wet in Totes Gebirge. Above 2000 m, there was 10-20 cm of fresh snow registered, which fell moistly. Bonding of moist layers of fresh snow to the old snowpack is inadequate and prone to triggering. At intermediate altitudes the snow is wet and, in some cases, rotten.

Weather

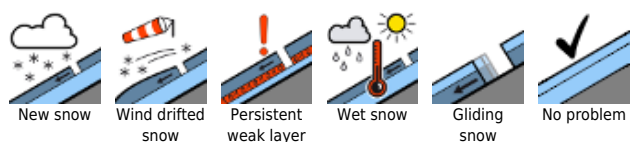
High-pressure front conditions on Thursday will bring sunshine. Low lying residual cloud will disperse quickly in the morning, but pure sunshine will be impeded by Sahara dust. Winds will shift to southerly, be blowing at light to moderate strength. At 2000 m: 2-5 degrees at midday.

On Friday, some cloudbanks will move in due to NE winds, but the peaks should remain free. No precipitation is anticipated. Temperatures will drop slightly.

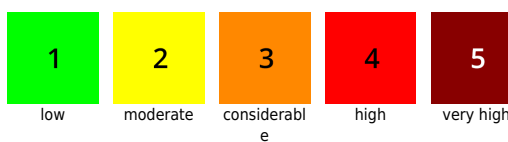
Outlook

The avalanche situation will relax a tad.

Avalanche problems



Danger ratings

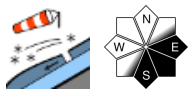
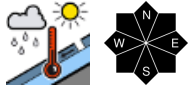
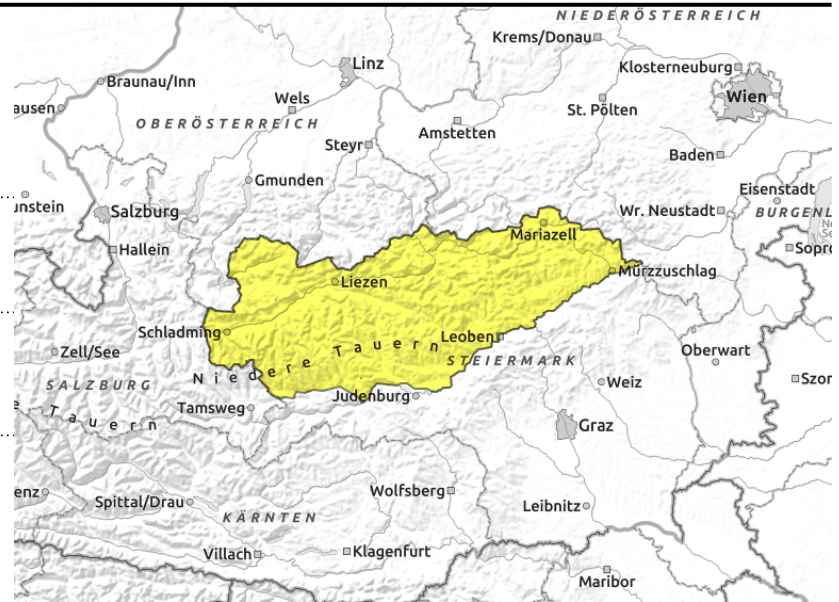


Expositions



17.03.2022, afternoon

Mürztaler Alpen, Seckauer Tauern, Südliche Wölzer Tauern, Schladminger Tauern Süd, Schladminger Tauern Nord, Dachsteingebiet, Totes Gebirge, Nördliche Wölzer Tauern, Rottenmanner Tauern, Ennstaler Alpen, Eisenerzer Alpen, Hochschwabgebiet, Mürzsteger Alpen



At high altitudes: snowdrifts! At low and intermediate altitudes: wet-snow problem.

In the Northern Alps and Niedere Tauern, a daytime cycle of avalanche danger prevails. Due to daytime warming, naturally triggered wet-snow avalanches can release.

In backcountry touring regions the freshly generated snowdrifts on east-facing slopes require attentiveness, even minimum additional loading can trigger a slab at high altitudes. Caution urged behind protruberances, where there are snowdrifts.

Snowpack structure

In the Northern Alps and Niedere Tauern there was rainfall up to 1800 m. The snowpack was moistened and became wet in Totes Gebirge. Above 2000 m, there was 10-20 cm of fresh snow registered, which fell moistly. Bonding of moist layers of fresh snow to the old snowpack is inadequate and prone to triggering. At intermediate altitudes the snow is wet and, in some cases, rotten.

Weather

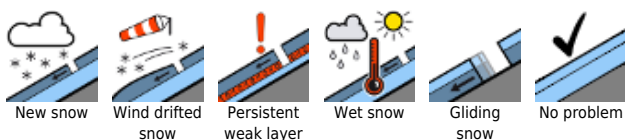
High-pressure front conditions on Thursday will bring sunshine. Low lying residual cloud will disperse quickly in the morning, but pure sunshine will be impeded by Sahara dust. Winds will shift to southerly, be blowing at light to moderate strength. At 2000 m: 2-5 degrees at midday.

On Friday, some cloudbanks will move in due to NE winds, but the peaks should remain free. No precipitation is anticipated. Temperatures will drop slightly.

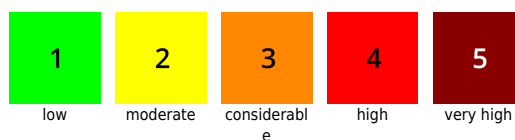
Outlook

The avalanche situation will relax a tad.

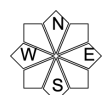
Avalanche problems



Danger ratings

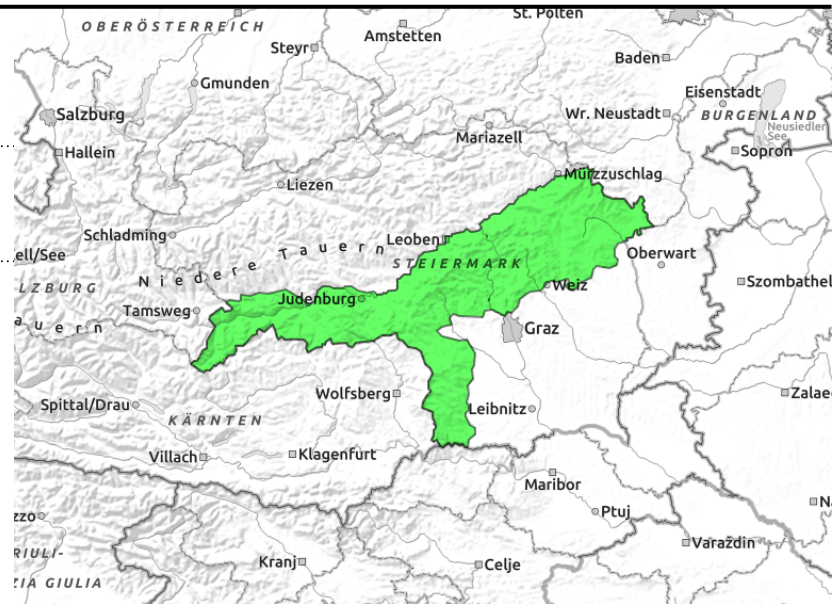
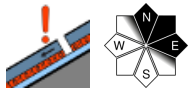


Expositions



17.03.2022

Östliche Fischbacher Alpen und Wechselgebiet,
Westliche Fischbacher Alpen und Grazer Bergland,
Stub- und Gleinalpe, Koralpe, Seetaler Alpen,
Gurktaler Alpen



Favorable backcountry conditions still persist

Isolated danger zones on north-facing slopes, where the persistent weak layer (more deeply embedded weak layer) prevails. On shady, extremely steep slopes, triggering a slab cannot be ruled out. Glide-snow avalanche activity is increasing.

Snowpack structure

The snowpack is stable. Due to minor rainfall the snowpack surface is moist down to intermediate altitudes. The base is still stable. On extremely steep shady slopes above 2000 m, weak layers of faceted crystals are making the snowpack layering vulnerable.

Weather

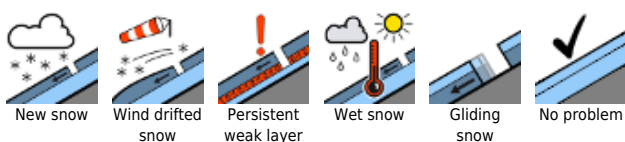
High-pressure front conditions on Thursday will bring sunshine. Low lying residual cloud will disperse quickly in the morning, but pure sunshine will be impeded by Sahara dust. Winds will shift to southerly, be blowing at light to moderate strength. At 2000 m: 2-5 degrees at midday. On Friday, some cloudbanks will move in due to NE winds, but the peaks should remain free. No precipitation is anticipated. Temperatures will drop slightly.

Outlook

No significant change in avalanche danger is anticipated.

Translated by Jeffrey McCabe, www.creativtrans.com

Avalanche problems



Danger ratings



Expositions

